

FOR LEASE

# 330 Pelham Road, Greenville, SC

Prime office space with excellent visibility



Get more information

**Chris Prince**  
Vice President  
+1 864 430 4957  
[chris.prince@avisonyoung.com](mailto:chris.prince@avisonyoung.com)

**Ned Reynolds**  
Vice President  
+1 336 260 3148  
[ned.reynolds@avisonyoung.com](mailto:ned.reynolds@avisonyoung.com)

**AVISON  
YOUNG**

# Property overview

Located on the high-traffic Pelham Road corridor, the property provides excellent visibility, abundant parking, and easy access to I-385. Surrounded by major retail and restaurant amenities, it's an ideal choice for businesses seeking accessibility, convenience, and a professional setting.

## Highlights

- Turn-key office space with high end finishes
- Signage opportunity
- High visibility with  $\pm 16,500$  VPD
- Abundant parking on-site
- Close proximity to I-385, Haywood Rd, and E North St
- Suite includes: large hard-walled offices with floor to ceiling windows on exterior with reception/waiting area, tech room, and small breakroom

## Offering Summary

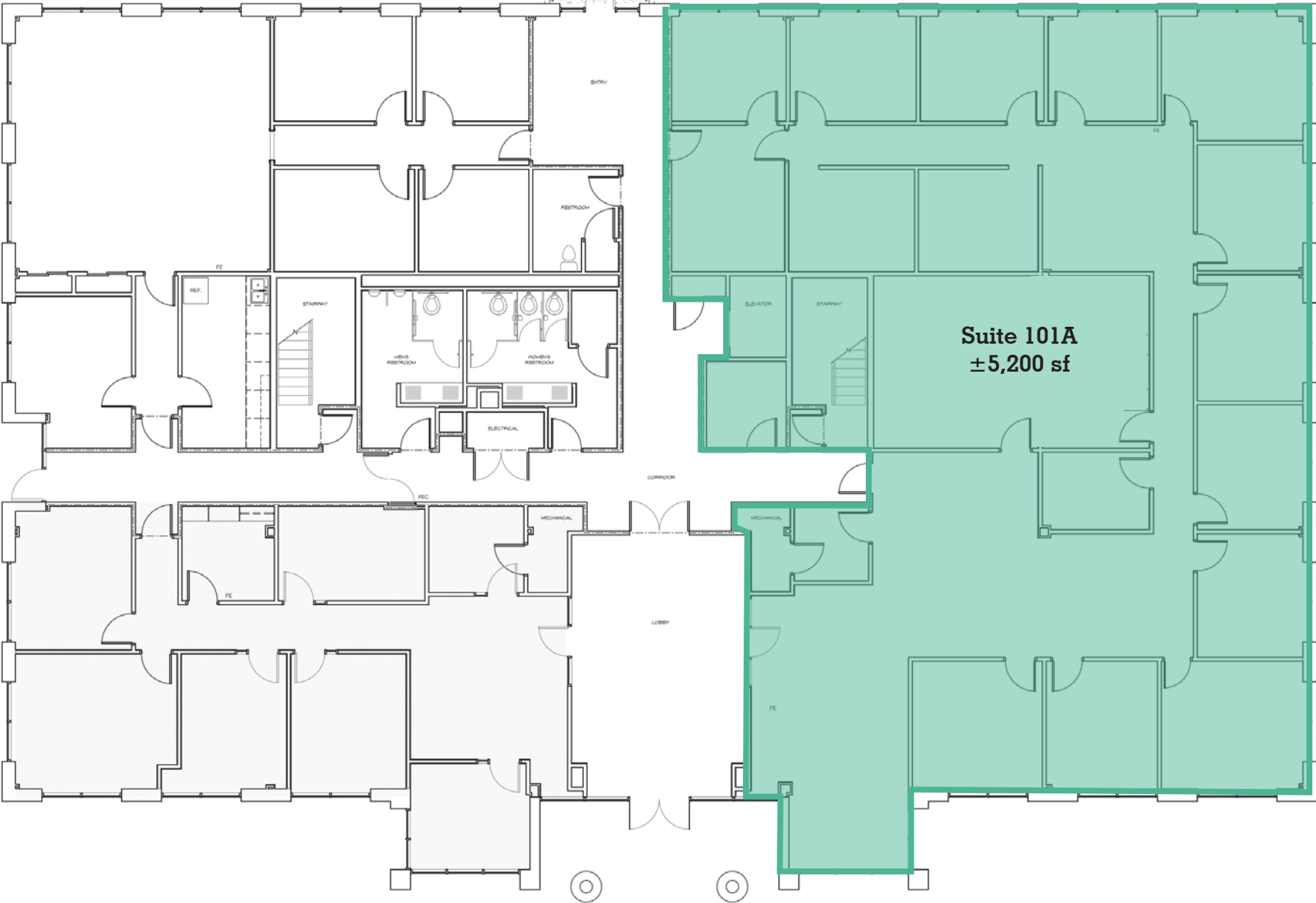
Space	Suite 101
Available size	$\pm 5,200$ sf
Lease type	Full service
Lease rate	\$21 psf
Date available	October 1, 2025
County	Greenville
Year built	2002

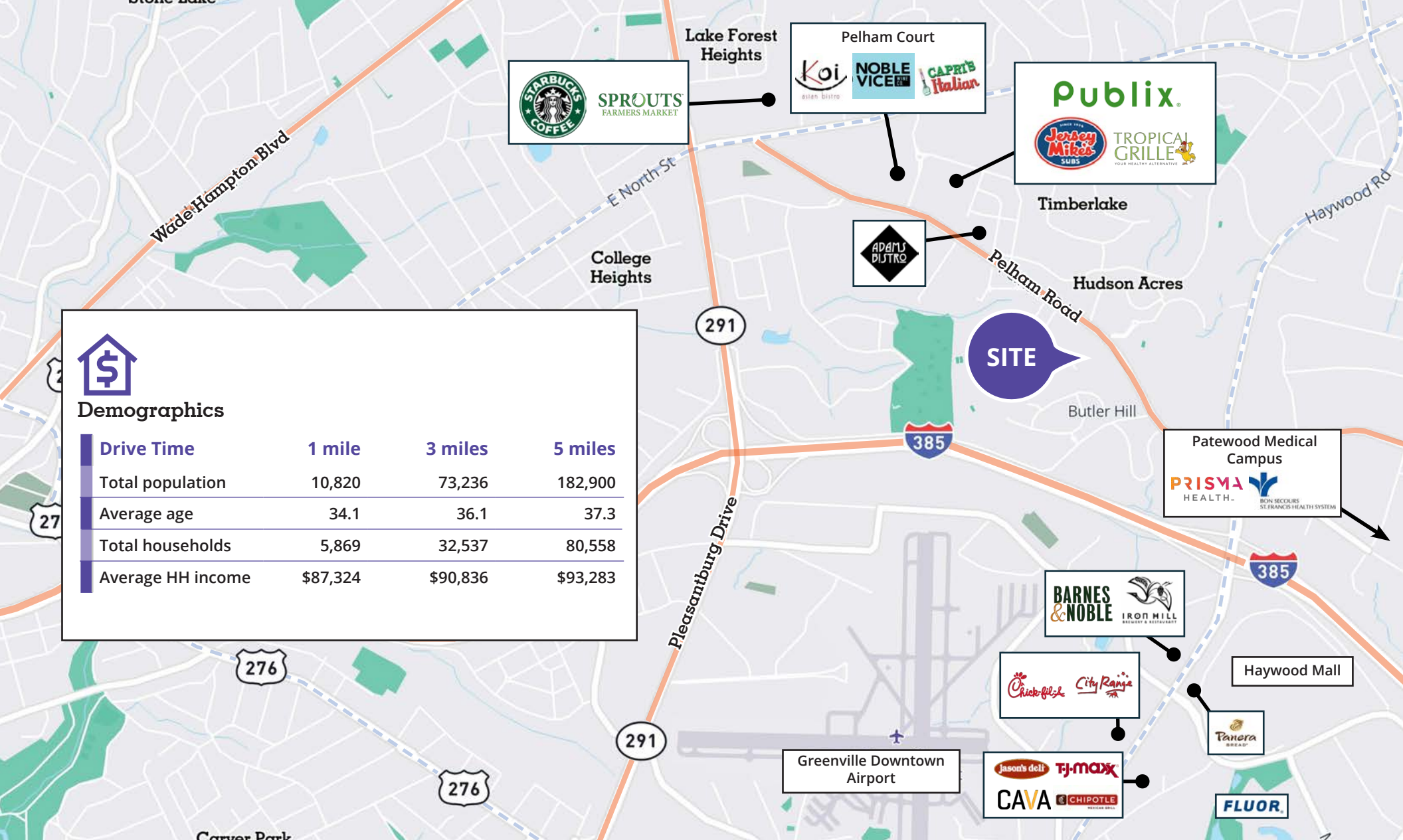



# Photos



# Floorplan





 **Demographics**

Drive Time	1 mile	3 miles	5 miles
Total population	10,820	73,236	182,900
Average age	34.1	36.1	37.3
Total households	5,869	32,537	80,558
Average HH income	\$87,324	\$90,836	\$93,283

**Get more information**

**Chris Prince**  
 Vice President  
 +1 864 430 4957  
 chris.prince@avisonyoung.com

**Ned Reynolds**  
 Vice President  
 +1 336 260 3148  
 ned.reynolds@avisonyoung.com

