

For Lease

2851

John
Street

MARKHAM, ONTARIO

20,893 Sq. Ft. Premium Turnkey Office Space



CBRE

FOR LEASE 2851 JOHN STREET, MARKHAM, ONTARIO

Property Overview

2851 John Street, Markham, ON

Property Details

Size (Sq. Ft.)
20,893 Sq. Ft.
(Divisible)

Asking Rate (\$/per sq. ft.)
\$15.00

Additional Rent (\$/per sq. ft.)
\$17.08 (2026 T&O)

Availability
September 1, 2026

Parking
~197 Parking Spaces
free unreserved parking

Furniture
Available



Excellent signage opportunity



Accessible via York Region Public Transit



Conveniently located ground floor national retail tenants



Proximity to Highway 404, 407, 401



Ample surface parking on site



Close to dining, retail, and entertainment options

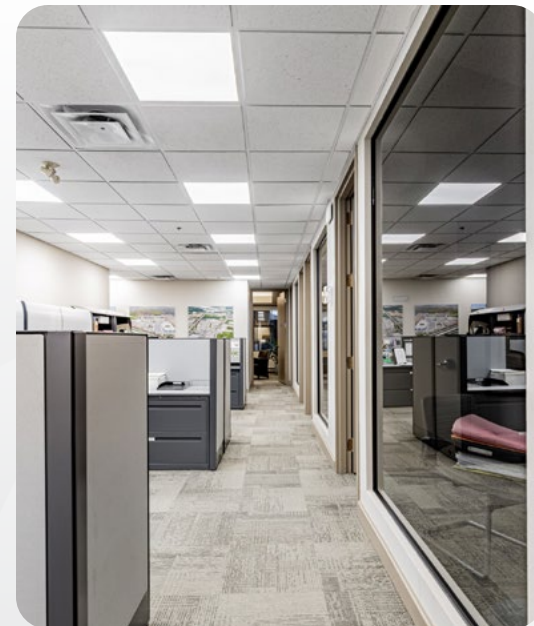
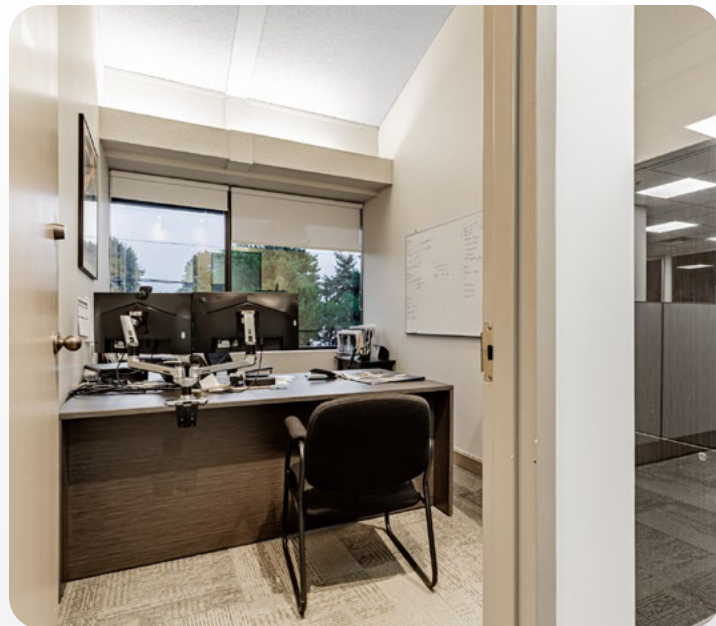
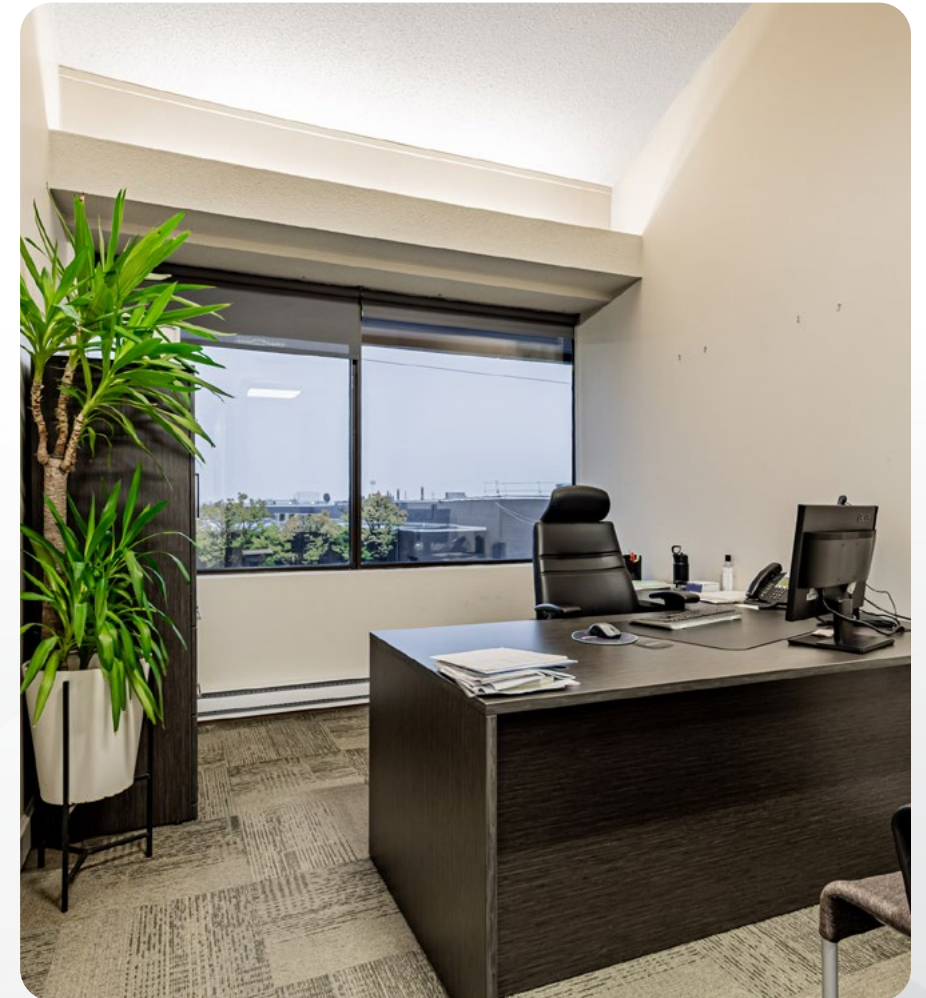


Suite Photos

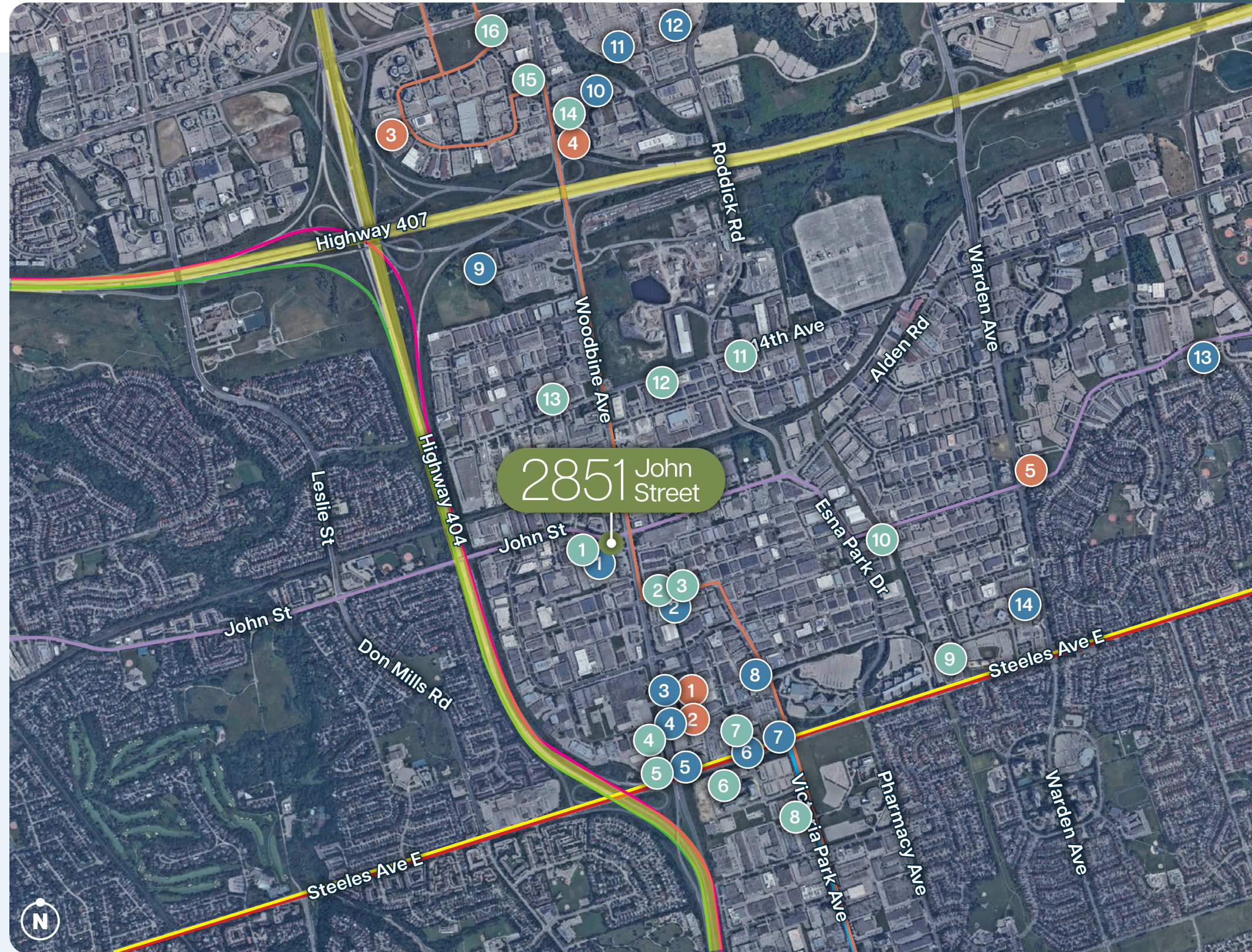
Suite 1 - 20,893 Sq. Ft.



Turnkey office with high-end furniture available upon request



Location Overview



Nearby Amenities

Restaurants

- | | |
|-------------------------|----------------------|
| 1 Tim Hortons | 9 Vegedelight |
| 2 Starbucks | 10 Tom's |
| 3 Swiss Chalet | 11 Daily Fresh Grill |
| 4 Gyubee Japanese Grill | 12 Woodbine Diner |
| 5 Tim Hortons | 13 Mandarin |
| 6 Fresh Burger | 14 Koke Teppanyaki |
| 7 Tanuki Restaurant | 15 Porta Via |
| 8 Shahi Manjil Indian | 16 Novita Italian |

Services & Retail

- | | |
|---------------------------|------------------------|
| 1 BMO | 8 SnapFitness Markham |
| 2 RBC | 9 Markham Golf Dome |
| 3 CIBC | 10 Costco |
| 4 TD Bank | 11 Home Depot |
| 5 Esso | 12 First Markham Place |
| 6 J-Town | 13 Can Sports Center |
| 7 Don Valley North Toyota | 14 T&T Supermarket |

Hotels

- | | |
|-----------------------------|----------------------------|
| 1 Courtyard by Marriott | 3 Park Inn by Radisson |
| 2 TownPlace Suites Marriott | 4 Hampton Inn & Suites |
| | 5 Monte Carlo Inn & Suites |

Transit

- | | | |
|-------------------------|--------|-------------------|
| HWY 407 | 5 min | TTC Bus Route 24 |
| HWY 401 | 10 min | TTC Bus Route 53 |
| HWY 427 | 20 min | TTC Bus Route 353 |
| HWY 403 & 410 | 35 min | YRT Bus Route 2 |
| Pearson Int. Airport | 20 min | YRT Bus Route 24 |
| Mississauga City Centre | 35 min | GO Bus Route 41 |
| Downtown Toronto | 30 min | GO Bus Route 61 |



Office
For Lease

Contact Us For More Information

Tony Gill*

Executive Vice President
+1 416 495 6261
tony.gill@cbre.com

Bryant Wilson*

Vice President
+1 416 495 6278
bryant.wilson@cbre.com

Michelle Saberon*

Senior Transaction Manager
+1 416 495 6318
michelle.saberon@cbre.com

CBRE

*Sales Representative | CBRE Limited, Brokerage
2005 Sheppard Ave. E., #800, Toronto, ON M2J 5B4 | www.cbre.ca

*Sales Representative. All Outlines are approximate. This disclaimer shall apply to CBRE Limited, Real Estate Brokerage, and to all other divisions of the Corporation; to include all employees and independent contractors ("CBRE"). The information set out herein, including, without limitation, any projections, images, opinions, assumptions and estimates obtained from third parties (the "Information") has not been verified by CBRE, and CBRE does not represent, warrant or guarantee the accuracy, correctness and completeness of the Information. CBRE does not accept or assume any responsibility or liability, direct or consequential, for the Information or the recipient's reliance upon the Information. The recipient of the Information should take such steps as the recipient may deem necessary to verify the Information prior to placing any reliance upon the Information. The Information may change and any property described in the Information may be withdrawn from the market at any time without notice or obligation to the recipient from CBRE. CBRE and the CBRE logo are the service marks of CBRE Limited and/or its affiliated or related companies in other countries. All other marks displayed on this document are the property of their respective owners. All Rights Reserved. Mapping Sources: Canadian Mapping Services canadamapping@cbre.com; DMTI Spatial, EnviroNics Analytics, Microsoft Bing, Google Earth.