

Retail Space Leasing Opportunity
27601-27651 Southfield Road, Lathrup Village, Michigan
Between I-696 / 11 Mile Road and 12 Mile Road
1,900 Square Feet





27601-27651 Southfield Road, Lathrup Village, Michigan

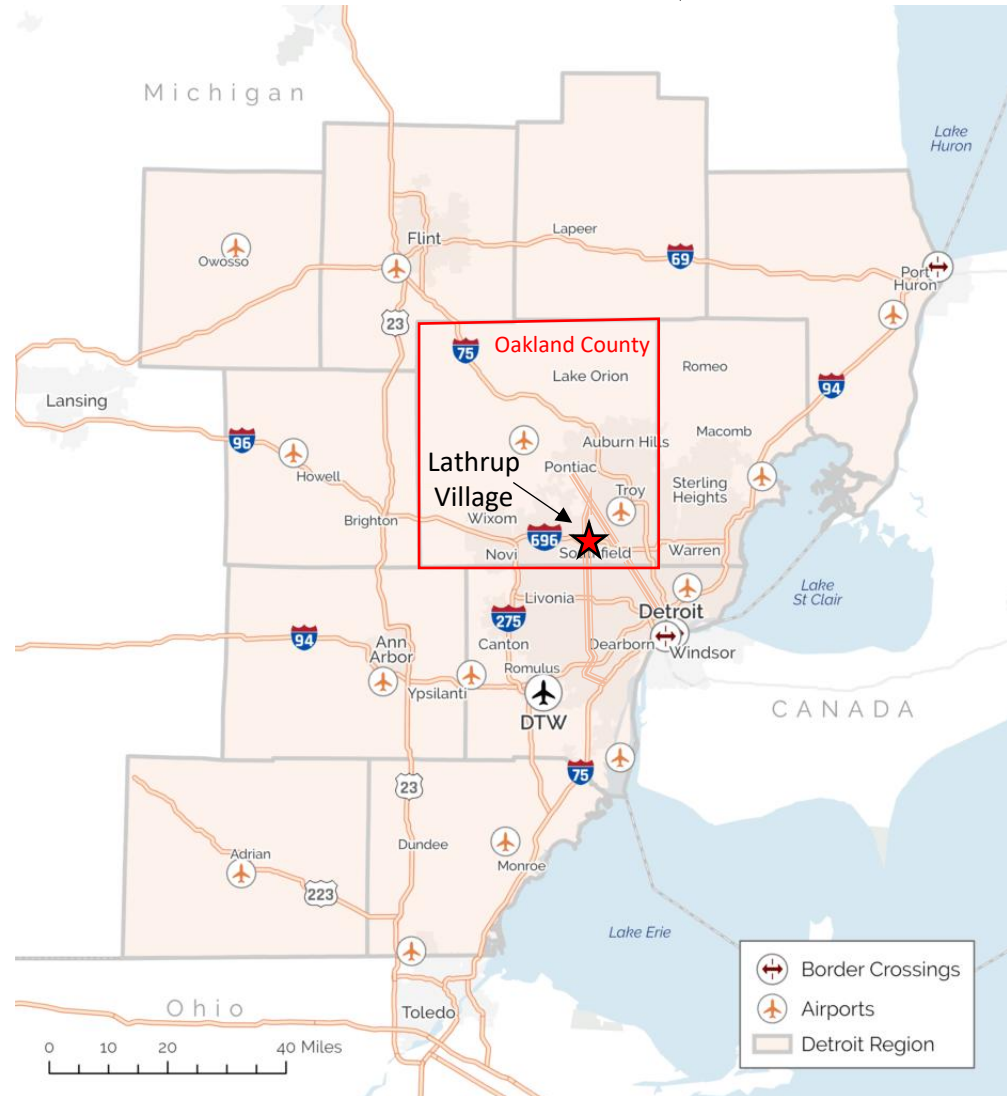


27601-27651 Southfield Road, Lathrup Village, Michigan



27601-27651 Southfield Road, Lathrup Village, Michigan

IN THE HEART OF METROPOLITAN DETROIT, MICHIGAN



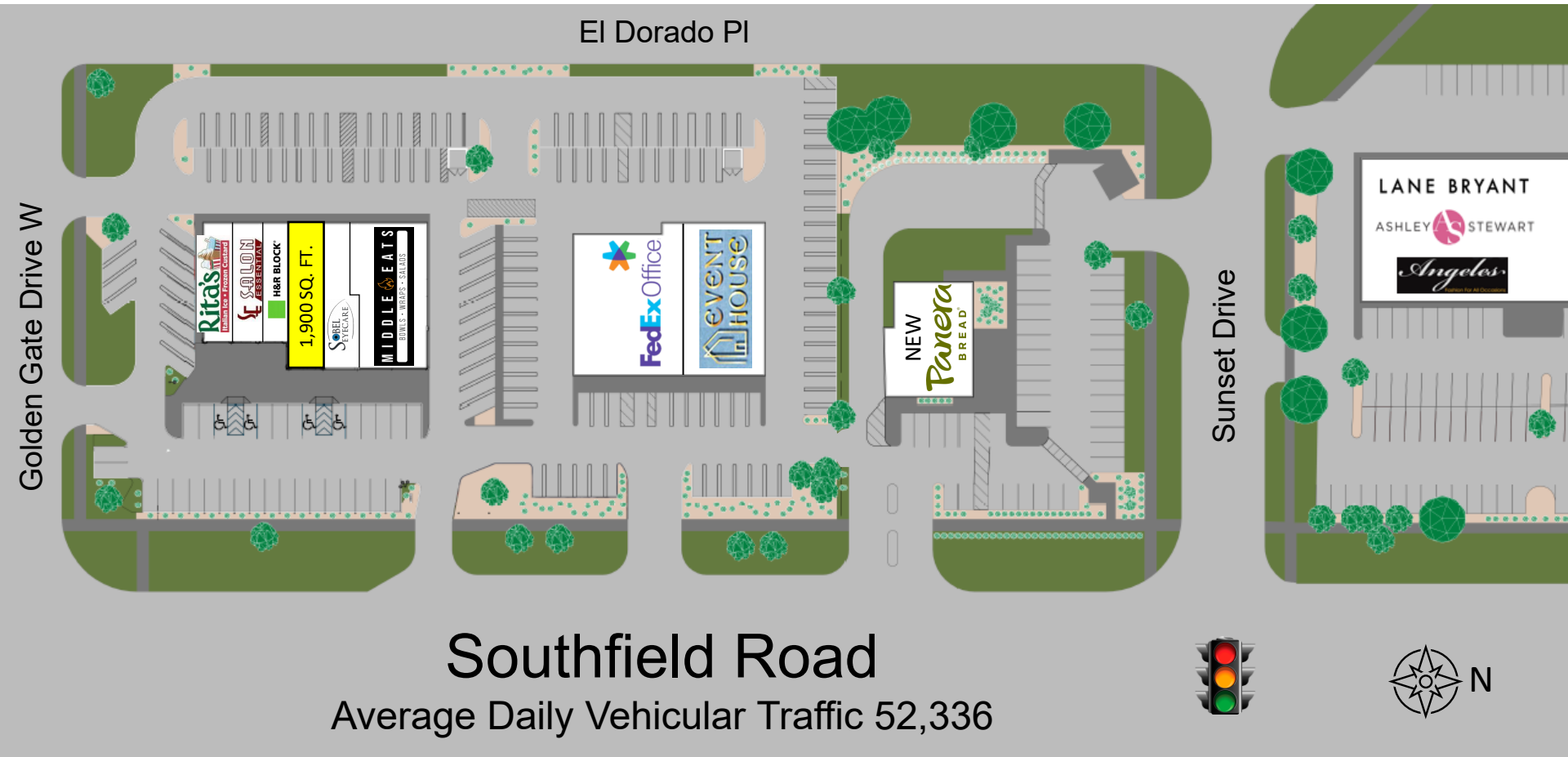
27601-27651 Southfield Road, Lathrup Village, Michigan

AERIAL



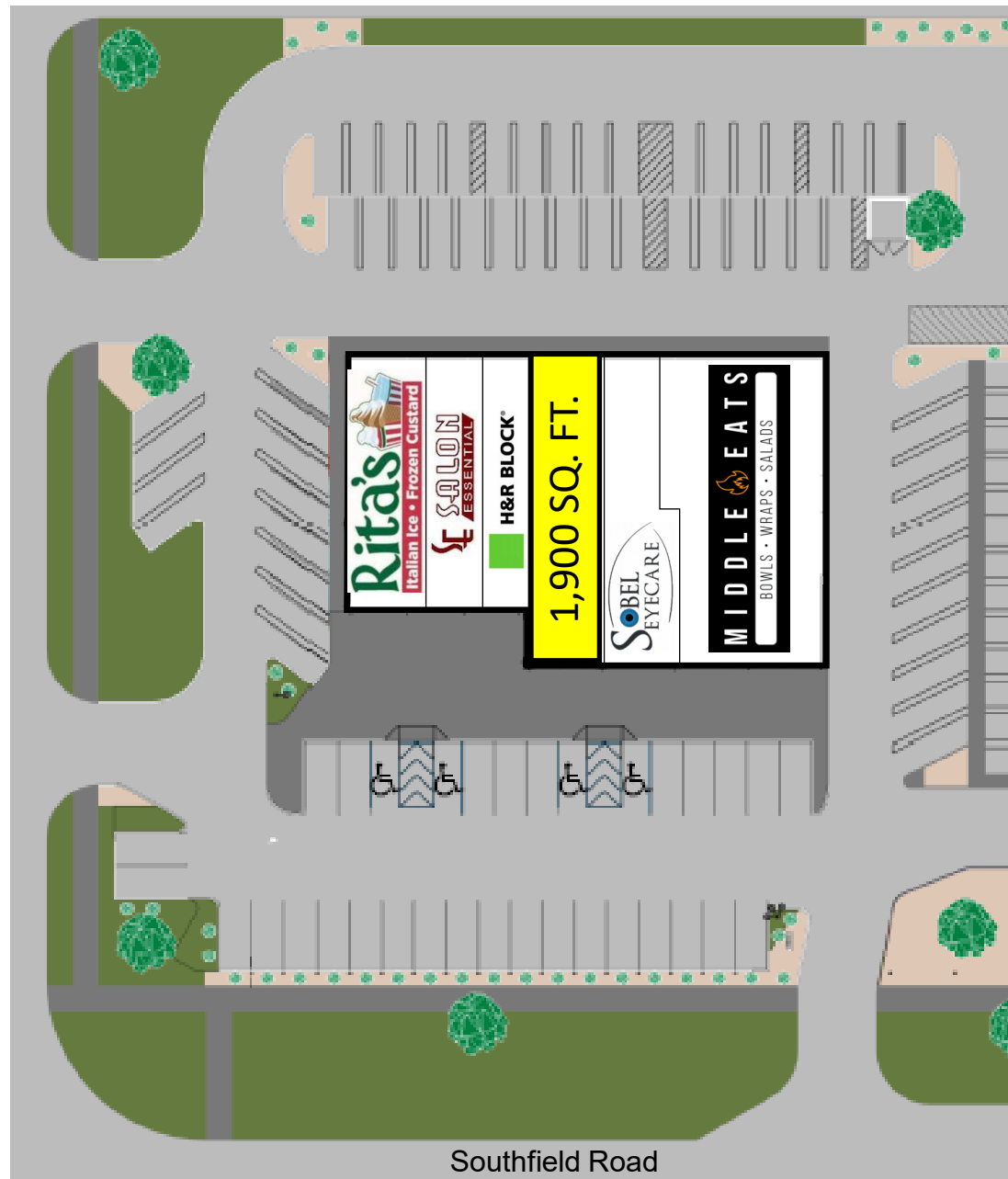
27601-27651 Southfield Road, Lathrup Village, Michigan

LATHRUP VILLAGE CENTER



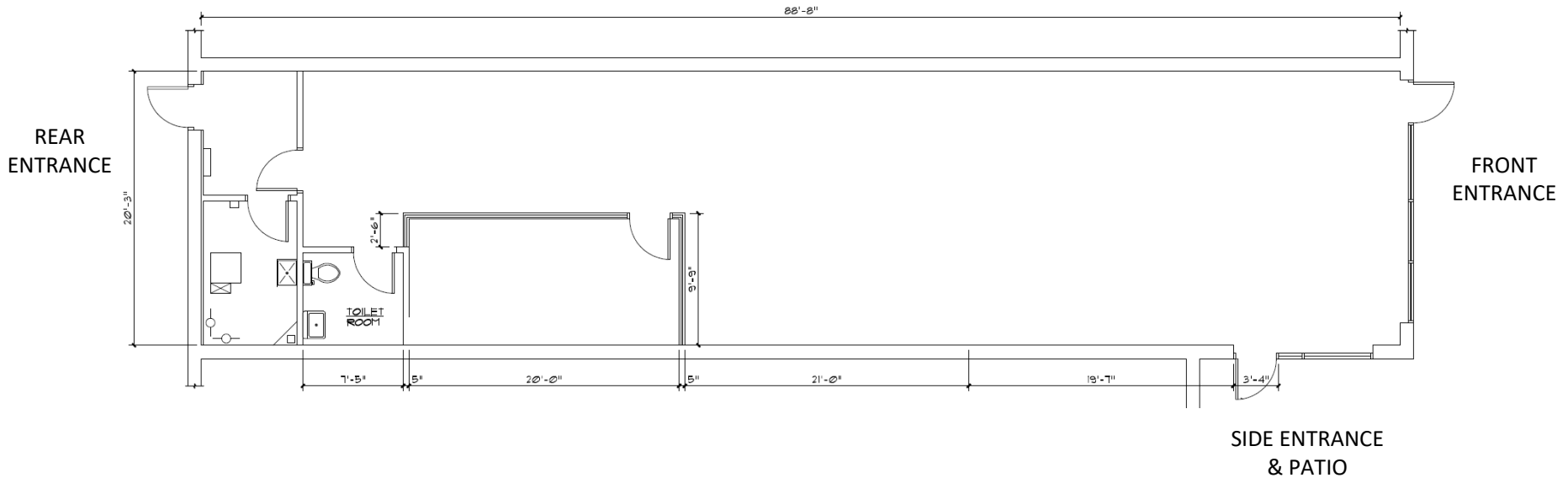
27601-27651 Southfield Road, Lathrup Village, Michigan

SITE PLAN



27601-27651 Southfield Road, Lathrup Village, Michigan

FLOOR PLAN – 27631 Southfield Road





27601-27651 Southfield Road, Lathrup Village, Michigan – 27631 Southfield Road Suite



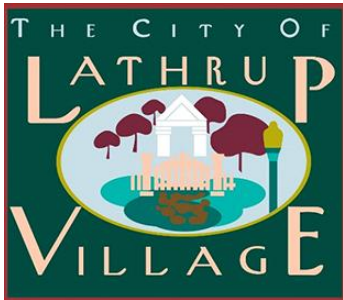
SITE HIGHLIGHTS

- Over 50,000 vehicles on Southfield Road each day
- Abundant and convenient parking surrounding the site
- Building signage and monument signage available
- Completely redesigned exterior façade, parking lot, landscaping, and signage.
- New storefront glass and doors
- Four blocks from I-696 interchange
- #1 north/south traffic of any road between Telegraph and Woodward
- Excellent co-occupants bringing shoppers and clients morning through evening:
 - Middle Eats, Panera Bread, FedEx Office, Rita's Italian Ice, H&R Block, Ashley Stewart, Lane Bryant, and more
- Longstanding area retailers, restaurants, medical and service occupants showing a track record of sustainable sales
- Dense residential and office population in immediate area
- Local property owner and manager visiting the site daily

MARKET OVERVIEW AND DEMOGRAPHICS



Oakland County, Michigan is one of the most economically robust and diverse counties in the Midwest. Located in the Detroit metropolitan area, it boasts a population of over 1.3 million and a strong mix of urban and suburban communities. The county is a major business hub, home to top employers in automotive, tech, healthcare, and advanced manufacturing. With a highly educated workforce, excellent infrastructure, and high median household income, Oakland County offers a prime environment for business growth and investment.



Lathrup Village, Michigan is a strategically positioned city in Oakland County, ideal for business development and investment. With direct access to major highways like I-696 and Southfield Road, it offers excellent regional connectivity. The city is known for its educated, diverse, and affluent population making it a strong consumer base. Its blend of suburban charm, civic engagement, and accessibility makes it a promising location for retail, service, and professional enterprises.

	1 Mile	3 Miles
Population	9,546	110,152
Households	3,841	47,009
Median Age	46.2	42.2
Median HH Income	\$80,034	\$76,952
Daytime Employees	5,564	72,717

CONTACT

Rob Krochmal

VP, Leasing & Acquisitions

rob@surnow.com

248.867.3304 mobile

ABOUT US, YOUR HOST

The Surnow Company is a family-owned developer, owner and property manager headquartered in Downtown Birmingham, Michigan.

Known for attention to detail and white-glove approach, we provide quality space and services for our customers and communities to thrive.

