

FOR LEASE

LAKEVIEW MEDICAL OFFICE PARK



PROPERTY DETAILS

- Building Size: 179,733 SF
- 20,578 SF For Lease
- Highly sought-after location off 91st & Meridian Street with easy access to US 31 & I-465
- Within 5 miles of several major hospitals, including IU Health North Hospital, Ascension St. Vincent Indianapolis Hospital, Ascension St. Vincent Carmel Hospital, and Franciscan Health Carmel
- Interior courtyard for tenants' use
- Excellent visibility with signage opportunities along North Meridian Street



Lakeview Medical Office Park
8902-9002 N Meridian St.
Indianapolis, IN 46260

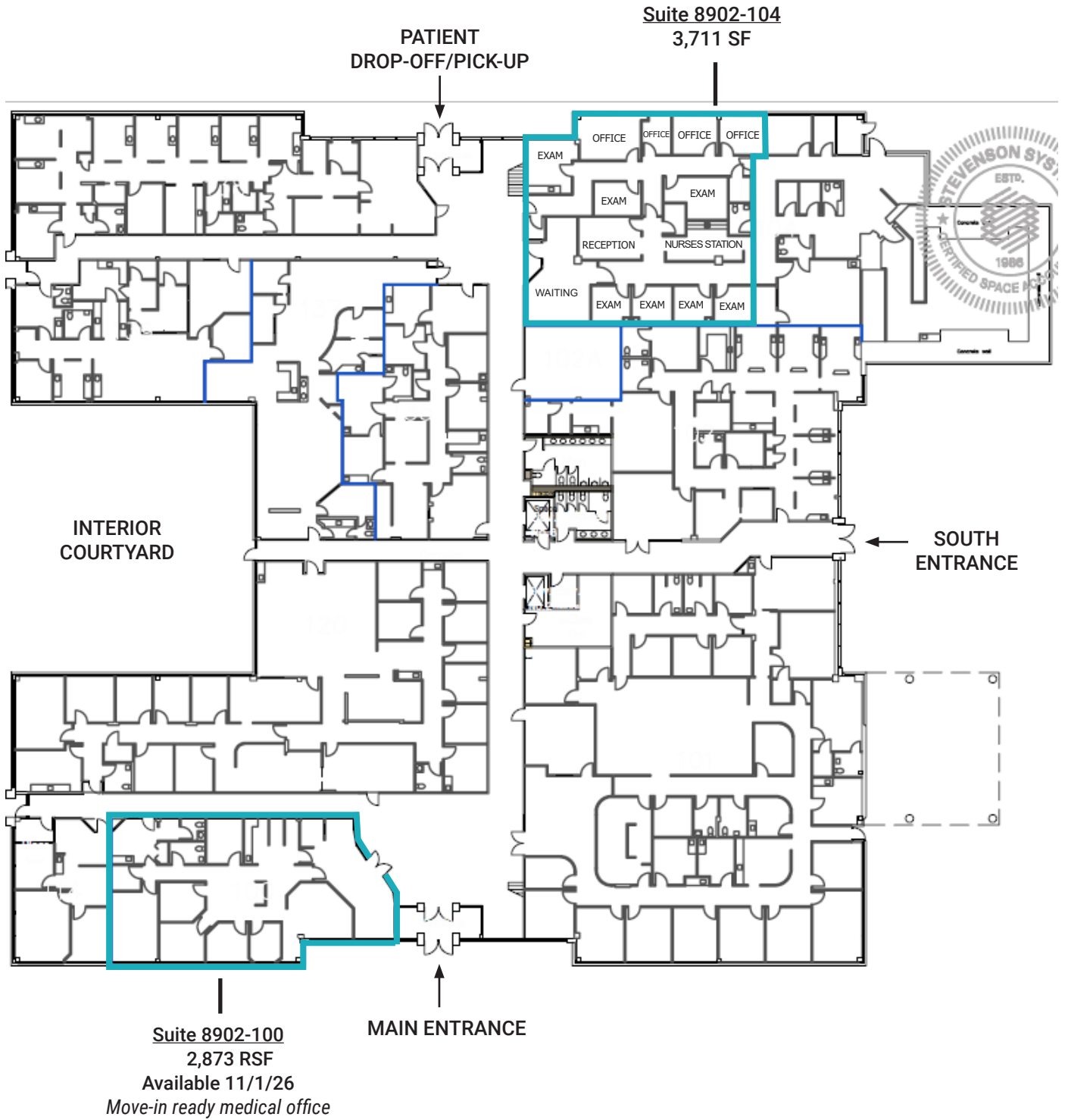
CONTACTS

Charles Yeo, CCIM, CPM
SVP Brokerage
317.288.9006
cyeo@cciin.com

Jennifer McAllister
Brokerage Associate
317.288.9022
jmcallister@cciin.com



8902 N Meridian | 1st Floor

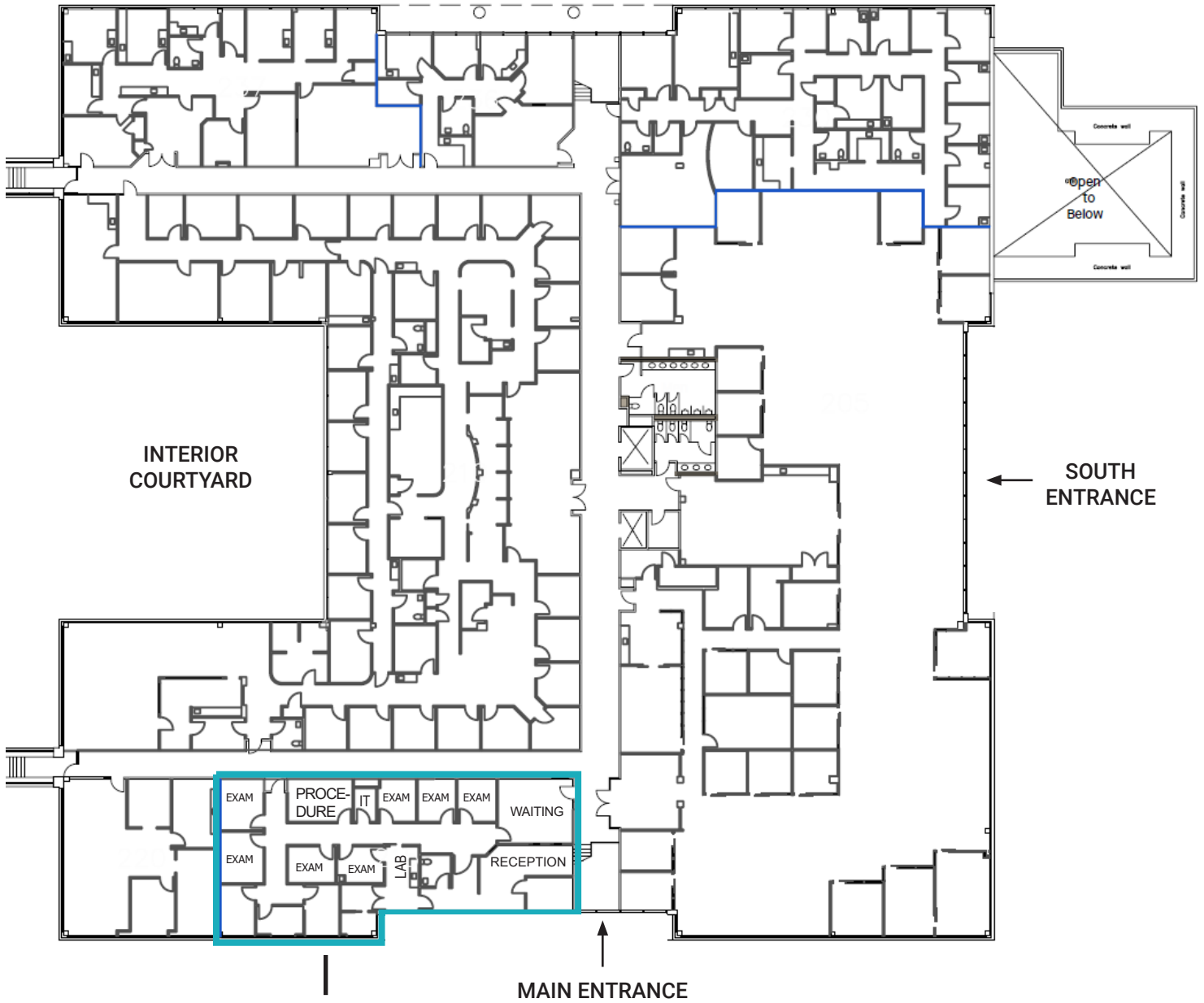




FLOOR PLANS

Lakeview Medical Office Park
8902-9002 N Meridian St. Indianapolis, IN

8902 N Meridian | 2nd Floor



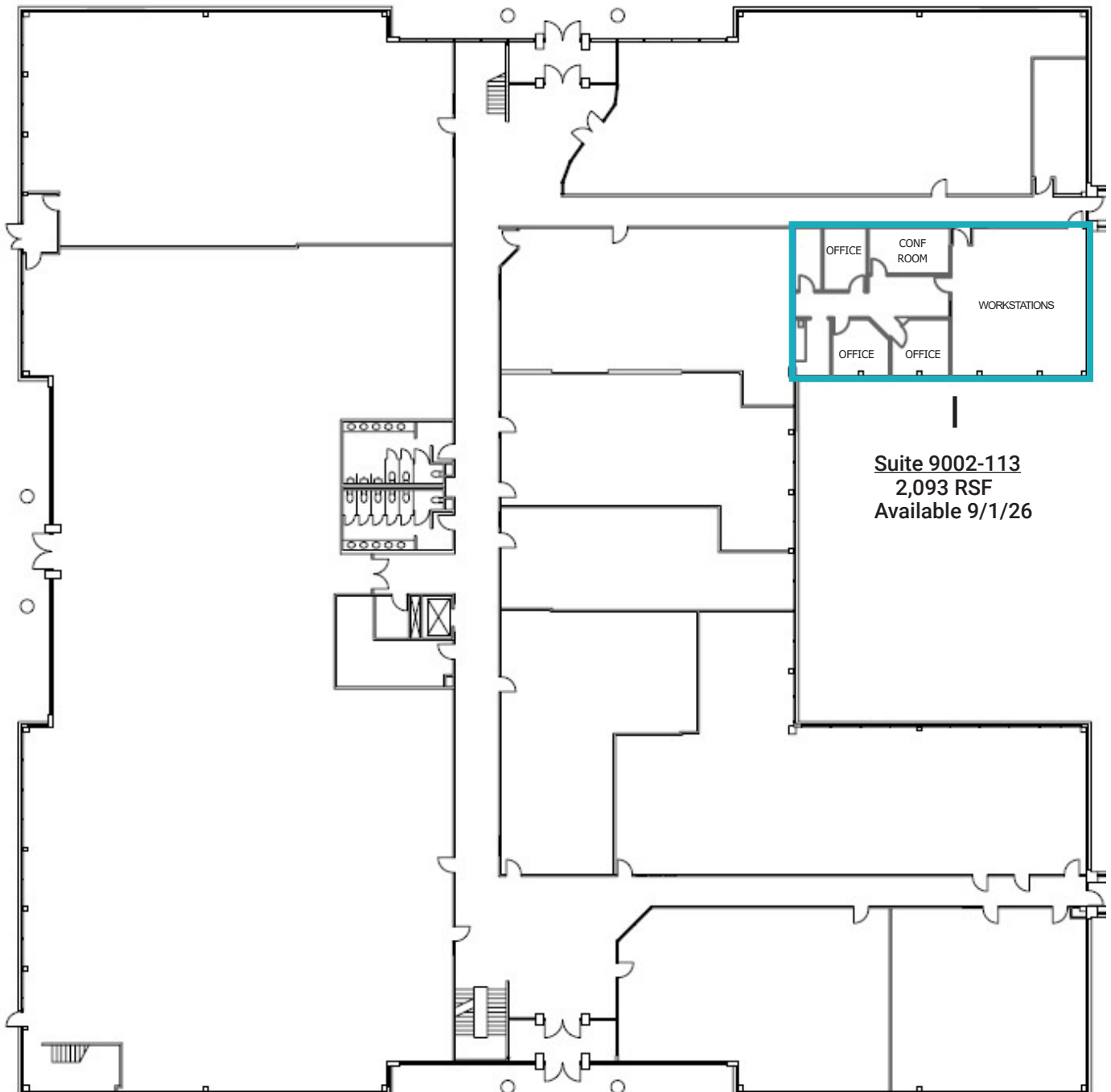
Suite 8902-215
3,309 RSF

Move-in ready medical office

FLOOR PLANS

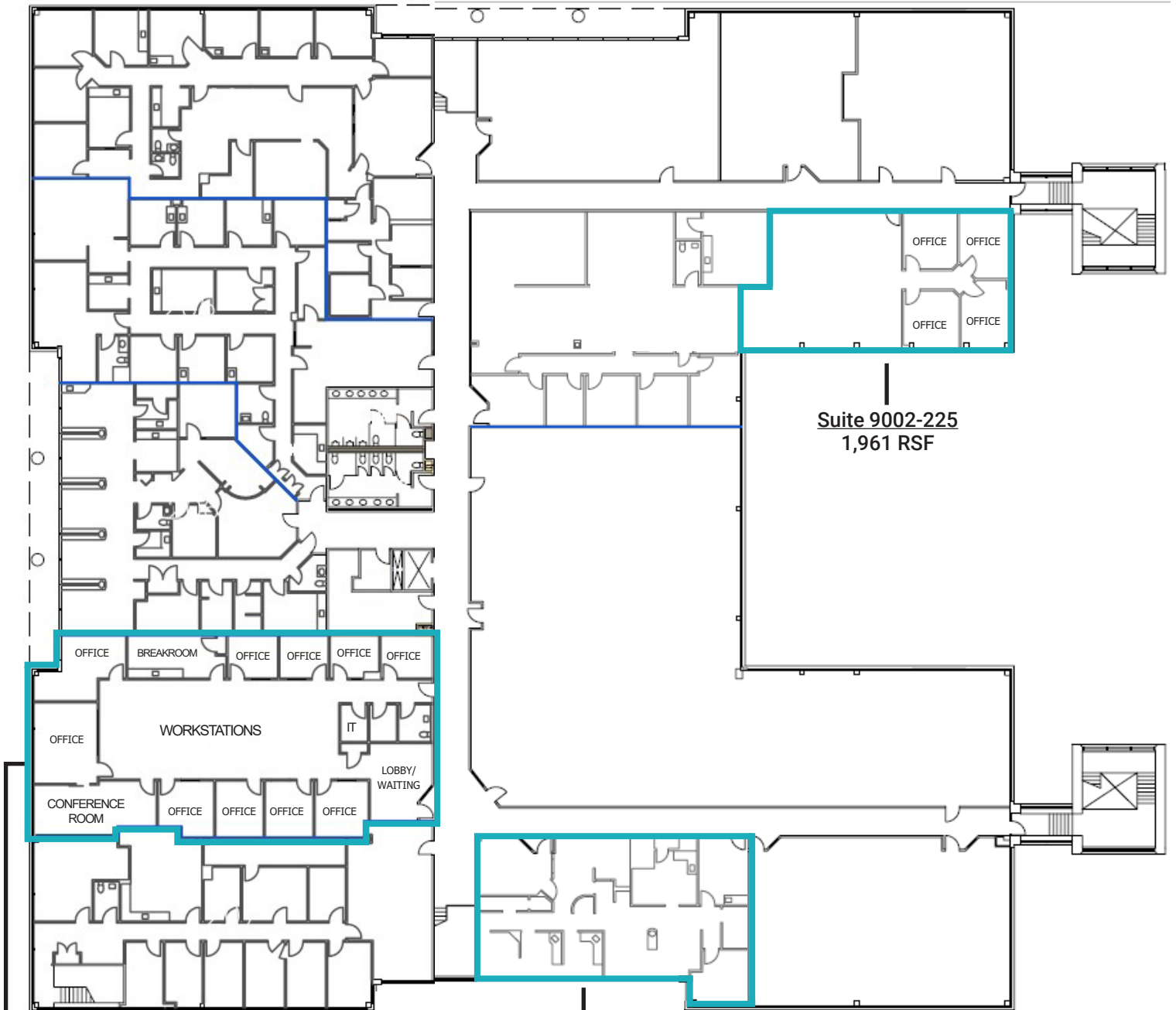
Lakeview Medical Office Park
8902-9002 N Meridian St. Indianapolis, IN

9002 N Meridian | 1st Floor



9002 N Meridian | 2nd Floor

PATIENT
DROP-OFF/PICK-UP



Suite 9002-209
4,370 RSF
Available 9/1/26

Suite 9002-210
2,261 RSF
Available 9/1/26
2nd Gen Dental Space


Suite 9002-225
1,961 RSF




DEMOGRAPHICS (5 - mile radius)

 **181,008**
Population

 **38.7**
Median Age

 **77,824**
Households

 **\$82,092**
Median Household Income

CONTACTS

Charles Yeo, CCIM, CPM
SVP, Brokerage
317.288.9006
cyeo@cciin.com

Jennifer McAllister
Brokerage Associate
317.288.9022
jmcallister@cciin.com

