

Available Medical Office Space for Lease

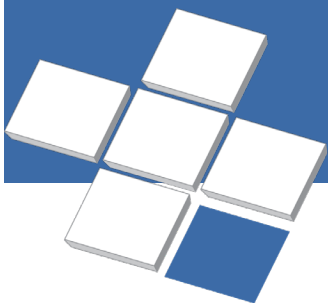
Deer Valley Medical Office II & III

19636-19646 North 27th Avenue, Phoenix, AZ 85027



For Leasing Information:
Lael Crompton
Sr. Director, Leasing
Phone: 858-794-1900
lcrompton@pmbres.com
www.pmbres.com
CA Lic. 01871298

- Two 4-Story Medical Office Buildings
- Free garage parking
- Convenient access to Arizona State Route 101
- Directly across from HonorHealth Deer Valley Medical Center a 204-bed, full service hospital offering extensive inpatient and outpatient general surgery and cardiac surgery. Breast Health and Research Center on the campus. Other services include Level I trauma care, critical care, 24-7 emergency department and pediatric emergency center.



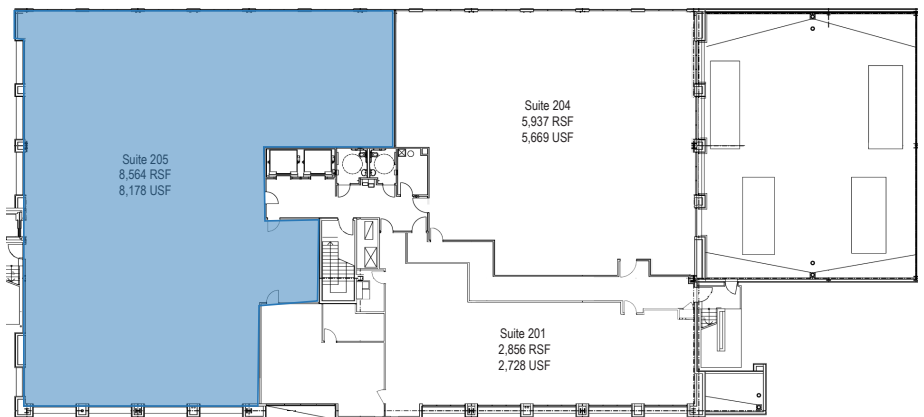
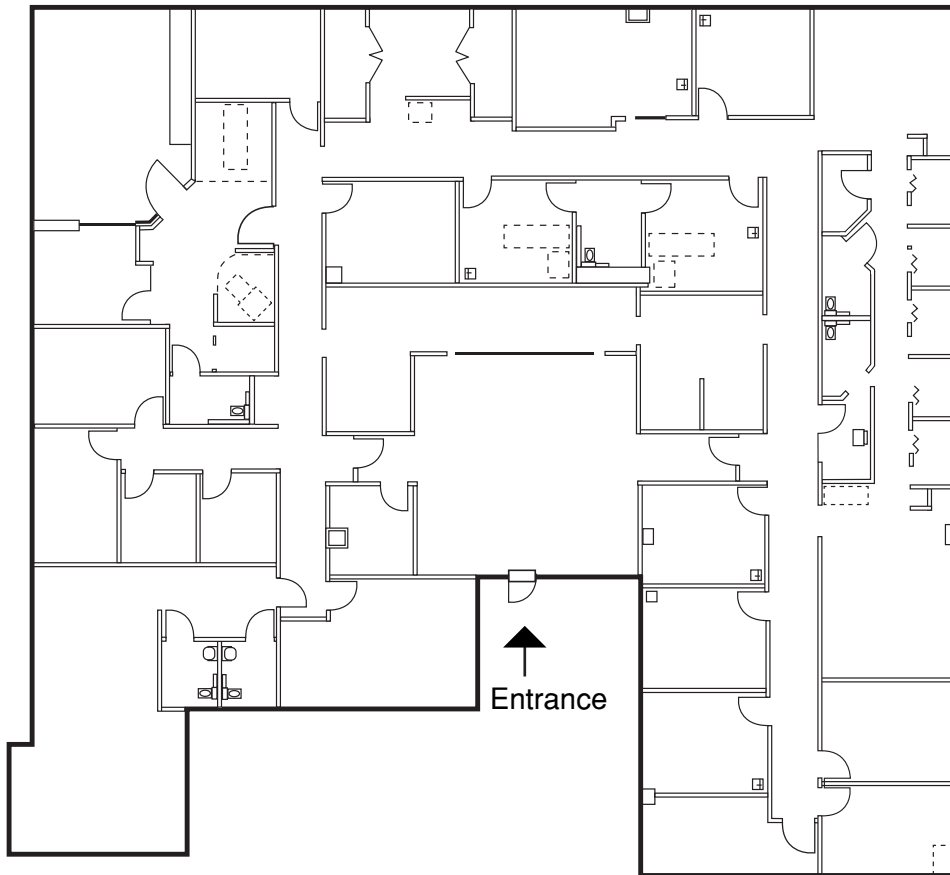
PMB
Real Estate Services
Real Estate Management Solutions for Healthcare



19646 North 27th Avenue

Suite 205 | 9,210 SF

Available July 1, 2026



For Leasing Information:

Lael Crompton | Sr. Director, Leasing
Phone: 858-794-1900 | lcrompton@pmbres.com
www.pmbres.com | CA Lic. 01871298

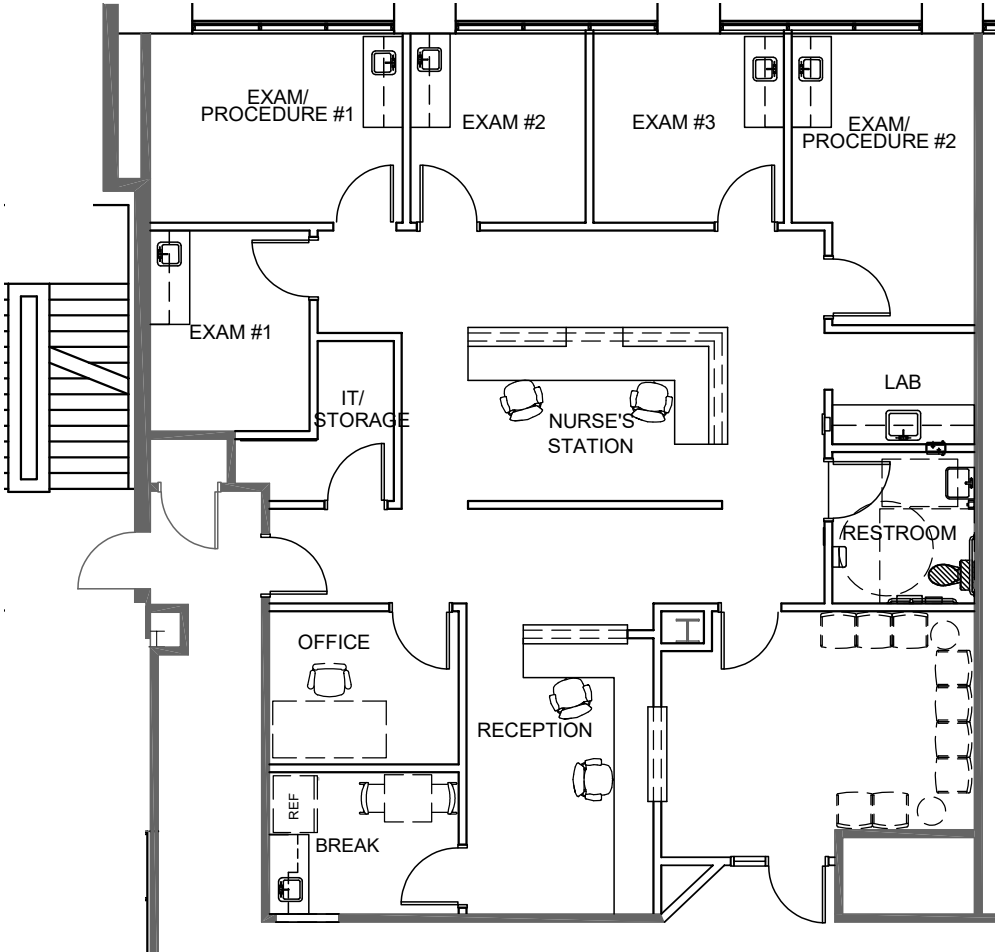


PMB Real Estate Services

19646 North 27th Avenue

Suite 402 | 2,113 SF

Future Spec Suite: Estimated Completion 3Q-2026



For Leasing Information:
Lael Crompton | Sr. Director, Leasing
Phone: 858-794-1900 | lcrompton@pmbres.com
www.pmbres.com | CA Lic. 01871298

