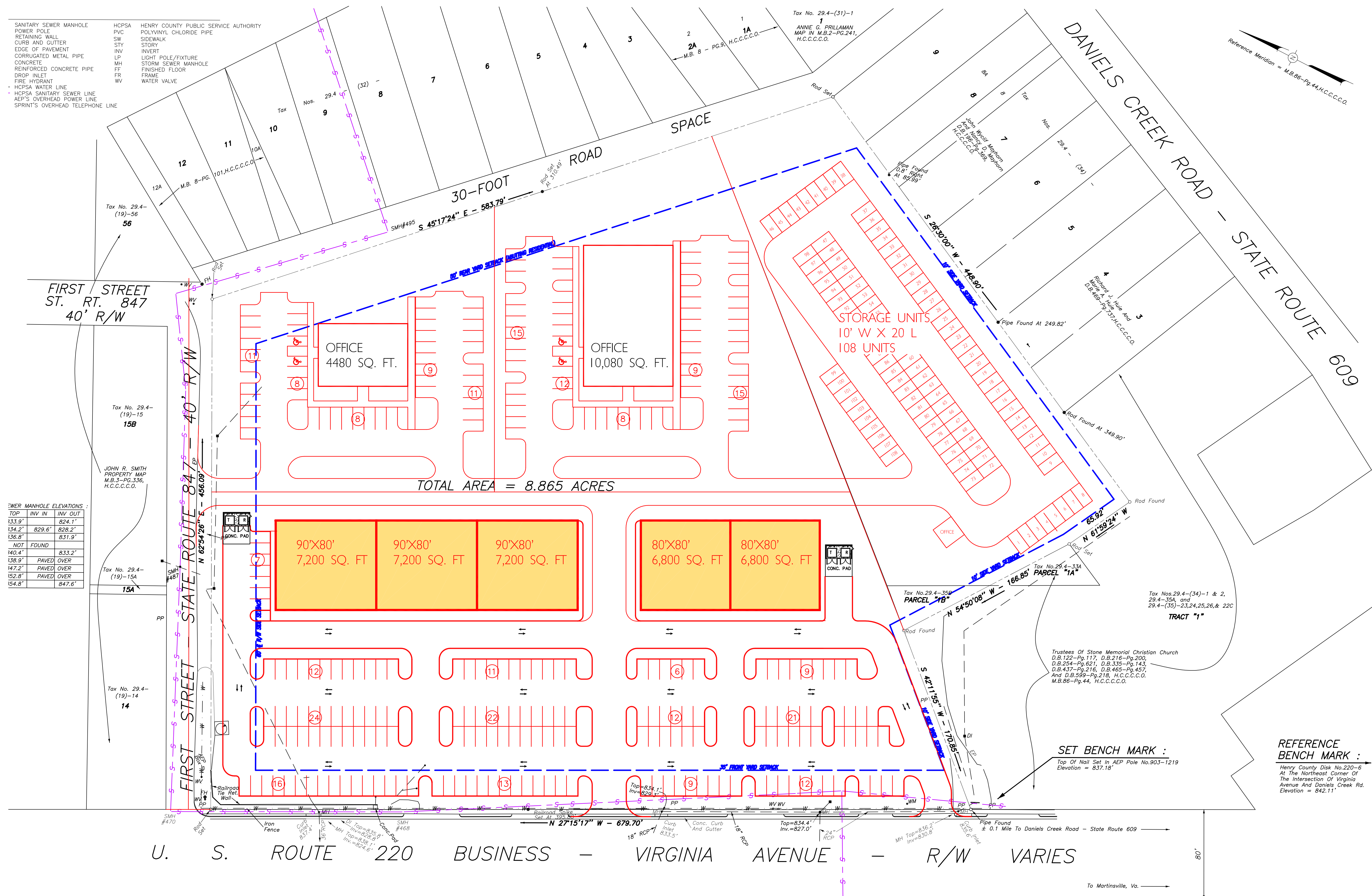


**COMMERCIAL DEVELOPMENT VIRGINIA AVENUE**  
**J & R MANAGEMENT, INC.**  
 ROUTE 220, BUSINESS, VIRGINIA AVENUE

P-LAYOUT-2



SANITARY SEWER MANHOLE  
 POWER POLE  
 CURB AND GUTTER  
 EDGE OF PAVEMENT  
 CORRUGATED METAL PIPE  
 CONCRETE  
 REINFORCED CONCRETE PIPE  
 DROP INLET  
 FIRE HYDRANT  
 HCPSA WATER LINE  
 HCPSA SANITARY SEWER LINE  
 AEP'S OVERHEAD POWER LINE  
 SPRINT'S OVERHEAD TELEPHONE LINE

HCPSA  
 PVC  
 SW  
 STY  
 INV  
 LP  
 MH  
 FF  
 FR  
 WV

HENRY COUNTY PUBLIC SERVICE AUTHORITY  
 POLYVINYL CHLORIDE PIPE  
 SIDEWALK  
 STORY  
 INVERT  
 LIGHT POLE/FIXTURE  
 STORM SEWER MANHOLE  
 FINISHED FLOOR  
 FRAME  
 WATER VALVE

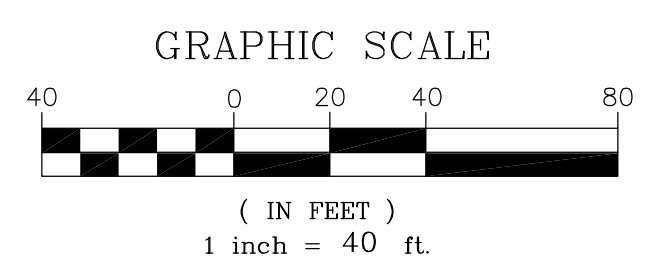
**SEWER MANHOLE ELEVATIONS :**

TOP	INV IN	INV OUT
133.9'		824.1'
134.2'	829.6'	828.2'
136.8'		831.9'
NOT FOUND		
140.4'		833.2'
138.9'	PAVED OVER	
147.2'	PAVED OVER	
152.8'	PAVED OVER	
154.8'		847.6'

**NOTES:**

This plat represents a current field survey by Piedmont Land Surveying, LLC.  
 This survey has been prepared without the benefit of a title report and does not necessarily indicate all encumbrances on the property.  
 This property is not located within a FEMA Flood Hazard Zone. It is located in Zone C.  
 Henry County tax map designations - 29.4-27 28 29 30 31 32 33 and 35B

**TAX NOS. 29.4 - 27, 28, 29, 30, 31, 32, 33, And 35B**  
**CURRENT OWNER : Evelyn H. Stone, Marilyn Stone Vaughn, And Roy C. Stone, Jr., Co-Trustees Of The Evelyn H. Stone Trust**  
**LEGAL REFERENCE : D.B. 793 - PG. 601, H.C.C.C.O.**  
**TAX NO. 29.4 - 30A (Left Out Of Description In D.B.793-Pg.601)**  
**CURRENT OWNER : Evelyn H. Stone**  
**LEGAL REFERENCES : D.B. 408 - PG. 1, Parcel III, H.C.C.C.O.**



NO.	DATE	DESCRIPTION	BY