



Office Space for Lease

**656-688 SE BAYBERRY LANE
LEE'S SUMMIT, MISSOURI**

Property Highlights

- Nine building office complex
- 218 sf to 1,250 (±) sf available
- Ideal space for professional or medical user
- Single room suites available
- Turnkey and tenant finish available
- Well maintained business center with lighted parking and on-site management
- Great amenities nearby on 291 Highway
- Excellent access to 291 Highway, 50 Highway and I-470
- Minutes from Downtown Lee's Summit
- Lease rates vary per unit, gross modified lease

For information, please contact:

Justin A. Beal
Executive Managing Director, Principal
t 816-268-4241
jbeal@nzimmer.com

1220 Washington Street, Suite 300
Kansas City, MO 64105

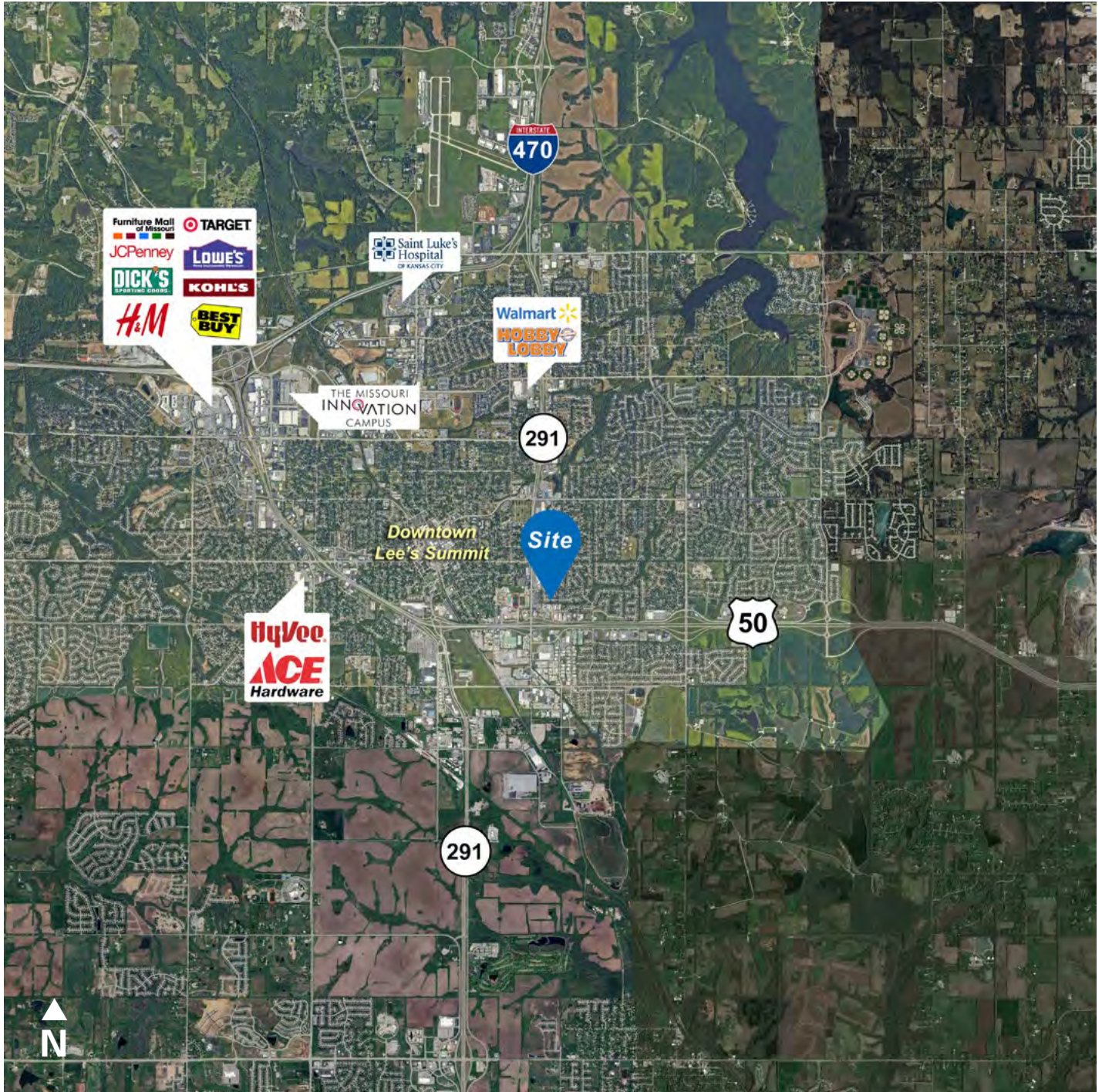
nrmkzimmer.com



NEWMARK
ZIMMER

The information contained herein has been obtained from sources deemed reliable but has not been verified and no guarantee, warranty or representation, either express or implied, is made with respect to such information. Terms of sale or lease and availability are subject to change or withdrawal without notice.

656-688 SE BAYBERRY LANE, LEE'S SUMMIT, MISSOURI



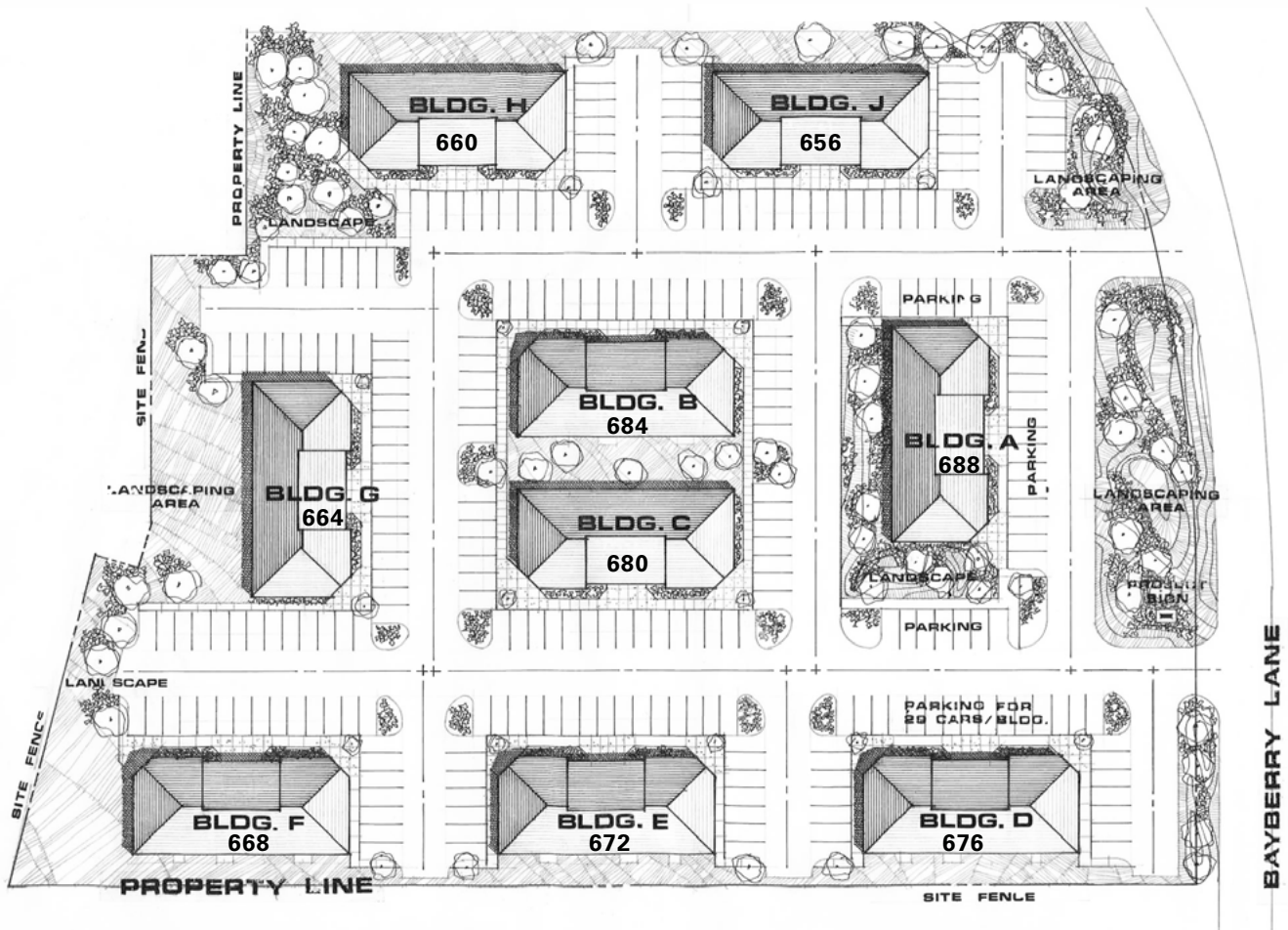
CONTACT

Justin A. Beal, CRRP
Executive Managing Director, Principal
t 816-268-4241
jbeal@nzimmer.com

nmrkzimmer.com

NEWMARK
ZIMMER

Site Plan

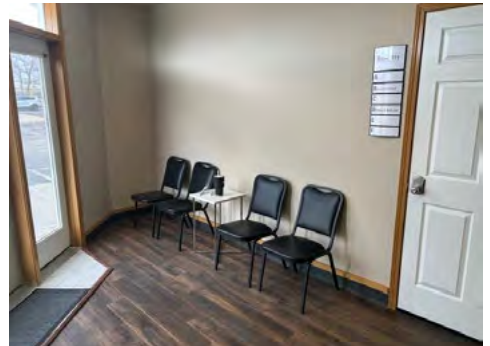
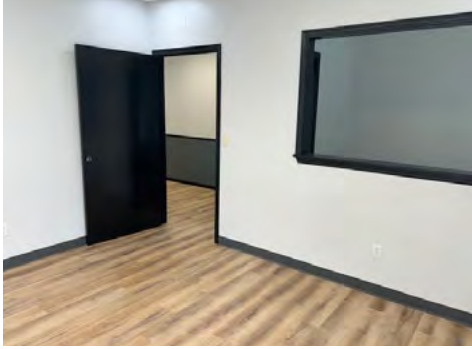


CONTACT

Justin A. Beal, CRRP
Executive Managing Director, Principal
t 816-268-4241
jbeal@nzimmer.com

nmrkzimmer.com

656-688 SE BAYBERRY LANE, LEE'S SUMMIT, MISSOURI



CONTACT

Justin A. Beal, CRRP
Executive Managing Director, Principal
t 816-268-4241
jbeal@nzimmer.com

nrmkzimmer.com

NEWMARK
ZIMMER