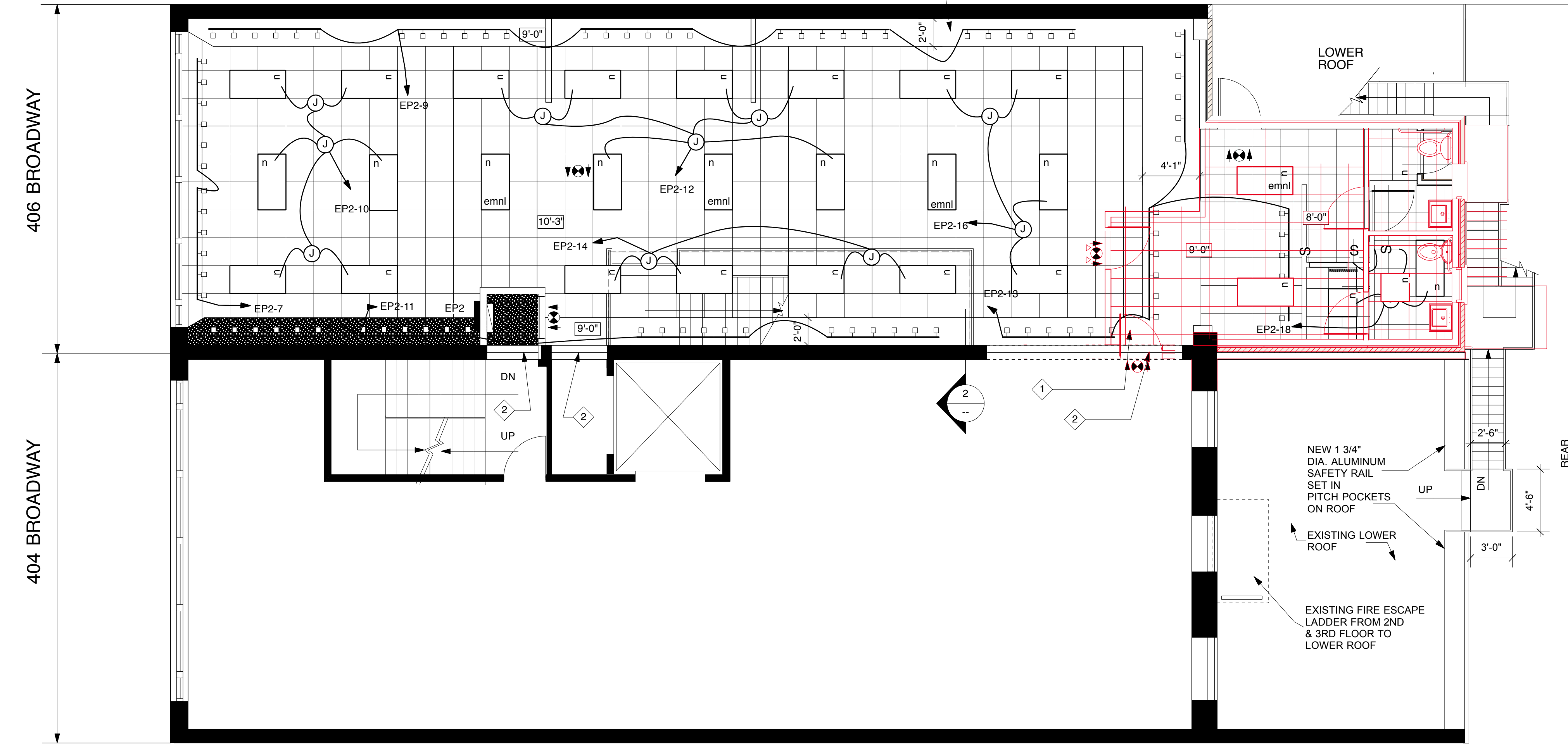
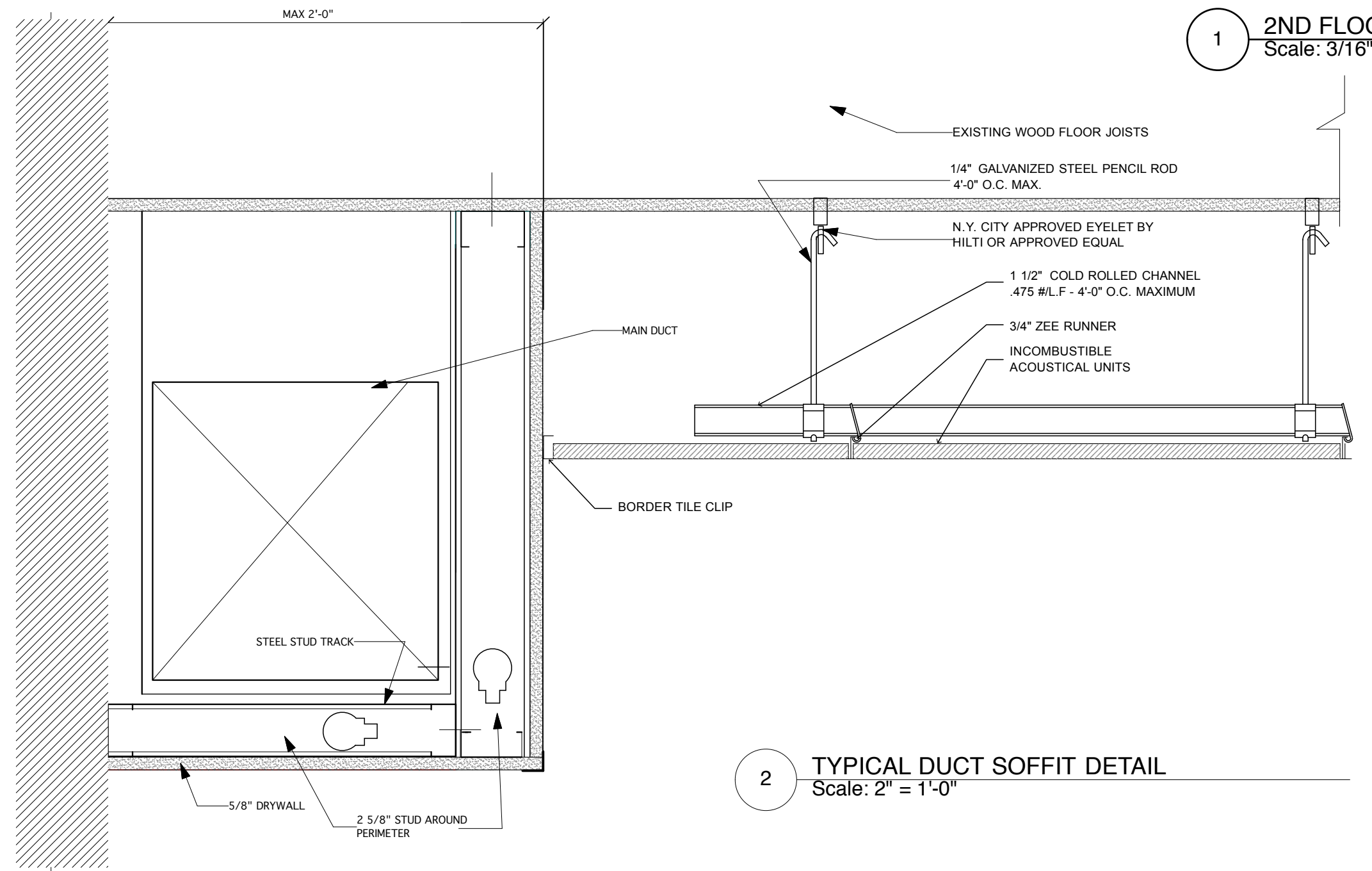


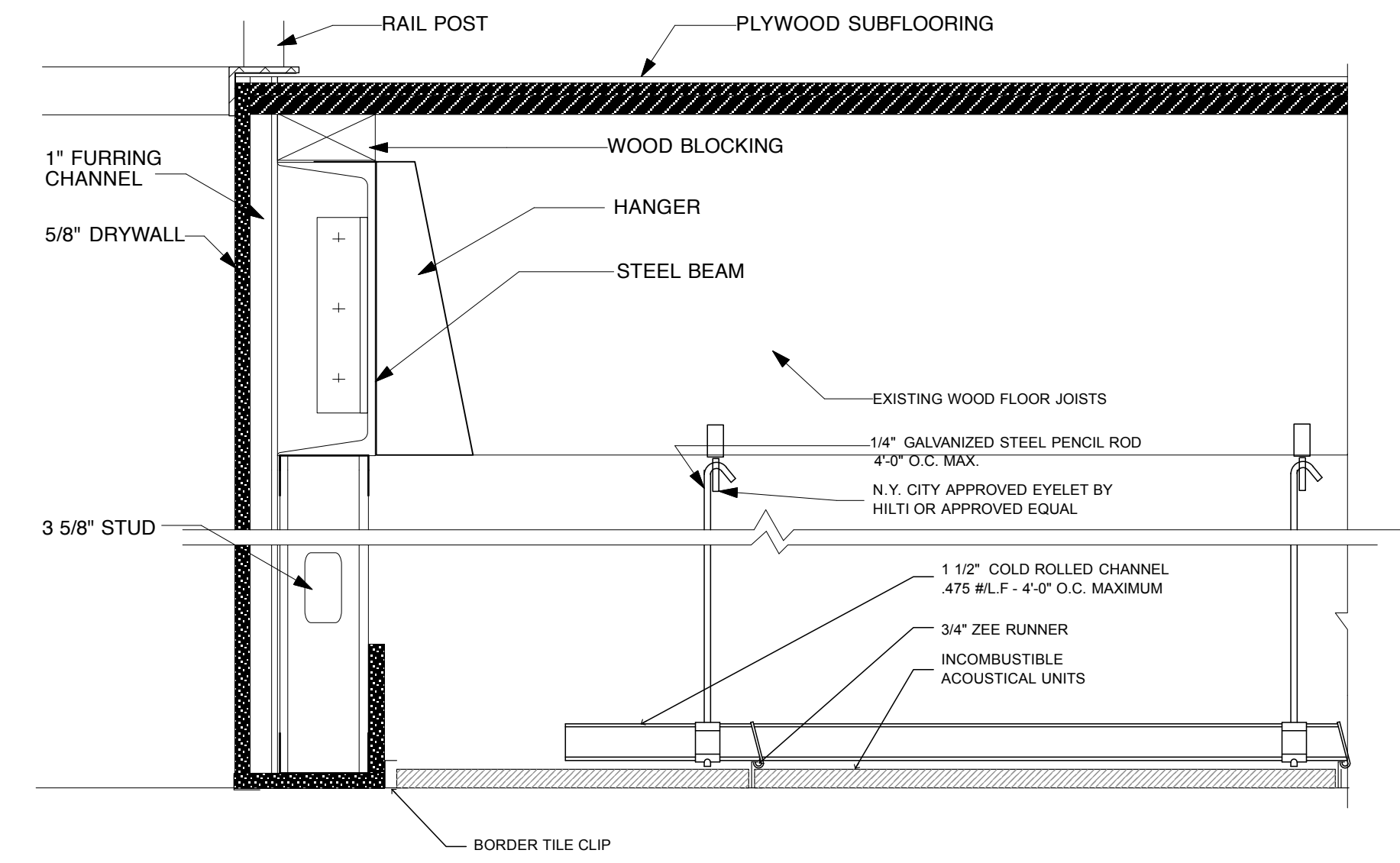
1 SMOKE BAFFLE AT BLDG SEPARATION CEILING
Scale: 2" = 1'-0"



1 2ND FLOOR REFLECTED CEILING / LIGHTING PLAN
Scale: 3/16" = 1'-0"



2 TYPICAL DUCT SOFFIT DETAIL
Scale: 2" = 1'-0"



3 SECTION THROUGH FLOOR/CEILING
Scale: 2" = 1'-0"

NOTES:
1. ALL EXPOSED WOOD JOIST SHALL HAVE ONE LAYER OF TYPE "X" 5/8" DRYWALL ATTACHED DIRECTLY TO THE UNDERSIDE TO PROVIDE A 1 HOUR FIRE SEPARATION BETWEEN FLOORS. THIS SHALL APPLY TO THE CEILING IN THE BASEMENT, GROUND, 2ND AND 3RD FLOOR (ROOF).
EMERGENCY LIGHTING NOTES:
1. ALL LIGHT FIXTURES THAT ARE EMERGENCY FIXTURES OR HAVE A 90 MINUTE BATTERY PACK SHALL BE CONNECTED TO A DEDICATED 24 HOUR CIRCUIT AT THE NEAREST PANEL.

| LEGEND | | |
|-----------|--------|---|
| ITEM USED | SYMBOL | DESCRIPTION |
| ● | □ | 2 X 4 RECESSED FLUORESCANT LIGHT FIXTURE W/ T5 HQ 54 WATT LAMPS W/ 4 LAMPS. EMNL DESIGNATES THAT FIXTURE IS AN EMERG. FIXTURE THAT STAYS ON 24 HOURS AND HAS A 90 MINUTE BATTERY PACK |
| ● | ⬆ | SURFACE MOUNTED EXIT SIGN W/ 90 MINUTE BATTERY PACK AND LED LIGHTING. ARROWS DESIGNATE THE DIRECTIONAL ARROWS ON SIGN FACE |
| ● | Ⓢ | 120V TOGGLE SWITCH |
| ● | □ | WALL MOUNT FLUORESCANT FIXTURE W/ 90 MINUTE BATTERY PACK |
| ● | □ | EXTERIOR EMERGENCY FIXTURE W/ 90 MIN. BATTERY PACK |
| ● | □ | 2 X 2 SUSPENDED CEILING WITH 15/16" WHITE "T" GRID AND 2' X 2' TILE BY ARMSTRONG CEILING. |
| ● | ■ | 5/8" DRYWALL CEILING ON HAT CHANNEL AND BLACK IRON ANGLED ABOVE WINDOW |
| ● | 9'-0" | DESIGNATES CEILING HEIGHT |
| ● | □ | 8' TRACK W/ 6 HEAD MAXLITE SKR3015FL30PD FLUORESCANT HEADS |
| ● | □ | FLEXIBLE SHIELDED CONDUIT IN CEILING. SUPPORT PER CODE |
| ● | Ⓝ | JUNCTION BOX |
| ● | ⤴ | CIRCUIT TO PANEL, NUMBER OF ARROW HEADS DESIGNATES NUMBER OF CIRCUITS |

| SYM | REFERENCE NOTES |
|-----|---|
| 1 | PROVIDE DRYWALL SOFFIT AROUND DUCTWORK |
| 2 | PROVIDE SMOKE BAFFLE AS SHOWN ON DETAIL 1 ON THIS SHEET IN OPENING BETWEEN BUILDINGS. |

TRANSITWARE
 406 BROADWAY
 NEW YORK, NY

STEVEN ROWLAND & ASSOCIATES, PC
ARCHITECTURE • PLANNING • DESIGN

SRA
232 Madison Avenue
New York, NY 10016
(212) 532-0006
Fax (212) 532-3703
Cell 917-763-8119

| | | | | | |
|--|--|-------------------|--|----------------------|--|
| Drawing Title: 2ND FLOOR REFLECTED CEILING / LIGHTING PLAN | | Job No.: 09-406BR | | Drawn By: S. ROWLAND | |
| Date: 12/17/09 | | Scale: as noted | | Checked By: EP | |
| This Drawing is not for reuse and is the sole Property of Steven Rowland & Associates, PC. These documents are the Confidential Property of Steven Rowland & Associates, PC, and shall be returned upon request. They are not to be disclosed to others, reproduced or used for any purposes except as authorized in writing by Steven Rowland & Associates, PC. | | North | | Floor No.: 2ND FL. | |
| ARCHITECT SEAL | | ENGINEER SEAL | | Dwg. No.: A-132.00 | |