

OFFICE SPACE FOR LEASE

120 Post Road West, Suite 201, Westport, CT



To arrange a tour contact:
Silvester Garza 203-226-7101 Ext 8
Silvester@vidalwettenstein.com
David Fugitt 203-226-7101 Ext 5
david@vidalwettenstein.com



VIDAL/WETTENSTEIN, LLC



719 Post Road East, Westport, CT 06880
www.vidalwettenstein.com

All information from sources deemed reliable and is submitted subject to errors, omissions, change of price, rental, and property sale and withdrawal notice.

120 Post Road West, Suite 201, Westport, CT

SPACE DETAILS SUITE 201

2,675 Sq. Ft.

9 perimeter offices with lots of windows

Large conference room

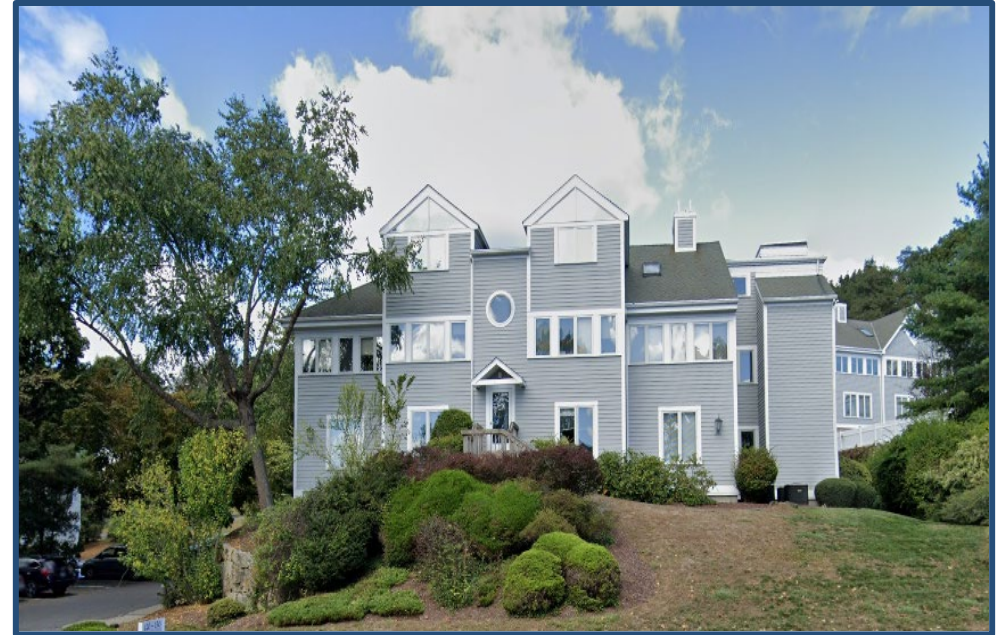
Immediate occupancy

Elevated building

Ample on-site parking

Convenient to Downtown and Metro North Train Station.

Lease Rate:
\$26/RSF + separately metered gas and electric

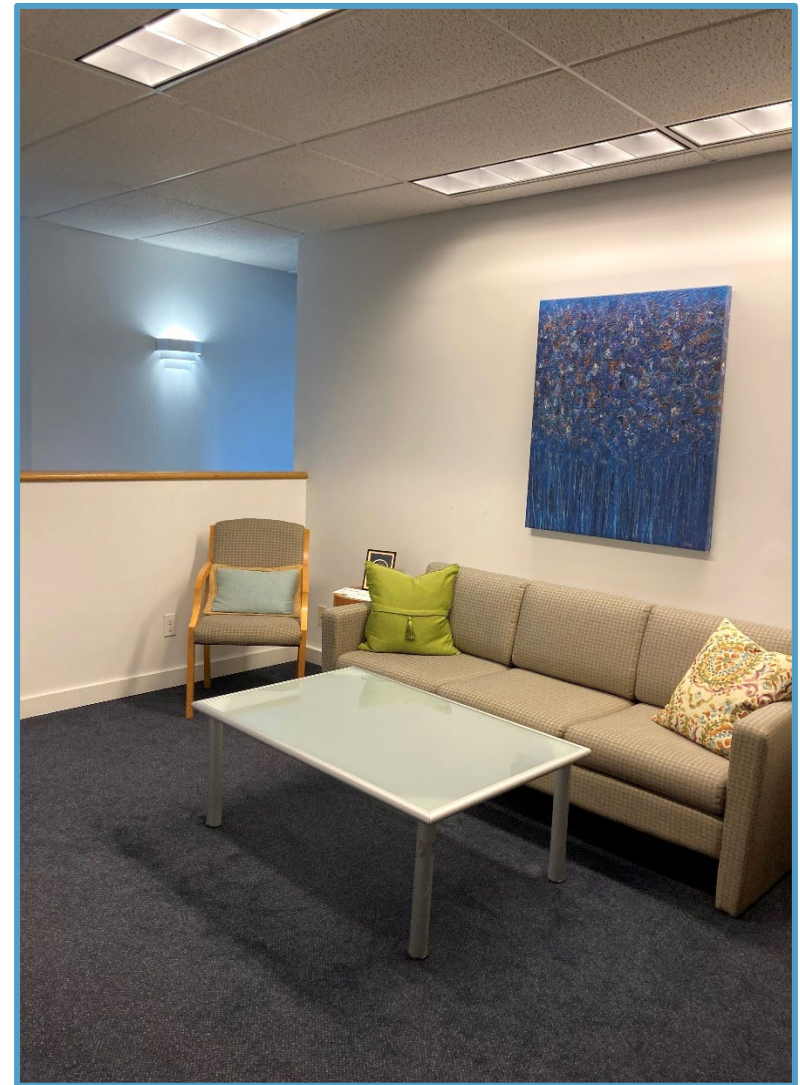


LOCATION: 5 miles to exit 17 of I-95

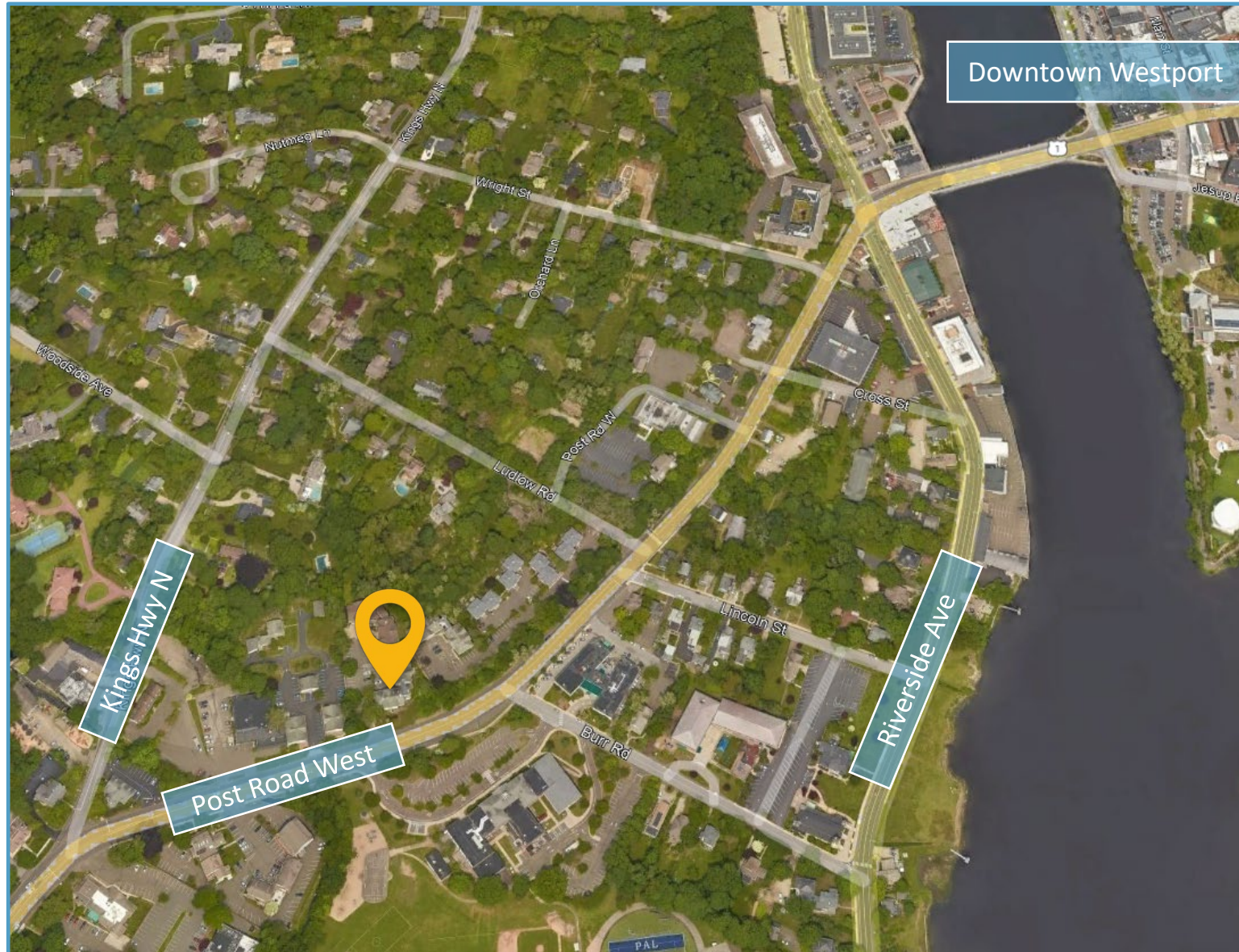
120 Post Road West, Westport, CT



120 Post Road West, Westport, CT



120 Post Road West, Westport, CT



Westport, Connecticut

General

ACS, 2019–2023	Westport	State
Current Population	27,282	3,598,348
Land Area <i>mi</i> ²	20	4,842
Population Density <i>people per mi</i> ²	1,367	743
Number of Households	9,698	1,420,170
Median Age	46	41
Median Household Income	\$250,001	\$93,760
Poverty Rate	4%	10%

Economy

Top Industries

Lightcast, 2023 (2 and 3 digit NAICS)	Jobs	Share of Industry
1 Retail Trade <i>Food and Beverage Stores</i>	2,565	32%
2 Health Care and Social Assistance <i>Ambulatory Health Care Services</i>	2,390	58%
3 Finance and Insurance <i>Securities, Commodities, & Financial Inv.</i>	2,034	67%
4 Government <i>Local Government</i>	1,982	90%
6 Professional, Scientific, and Tech Svc <i>Professional, Scientific, and Tech Svc</i>	1,870	100%
Total Jobs, All Industries	16,136	

SOTS Business Registrations

Secretary of the State, March 2025

New Business Registrations by Year

Year	2020	2021	2022	2023	2024
Total	592	649	564	643	648

Total Active Businesses 5,806

Key Employers

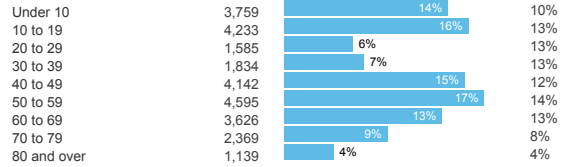
Data from Municipalities, 2025

- Bridgewater Associates
- Town of Westport Public Schools/Government
- Westport/Weston YMCA
- Ed Mitchell Inc.
- Gault Inc.

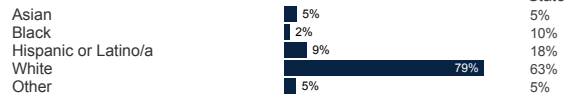
Demographics

ACS, 2019–2023

Age Distribution



Race and Ethnicity

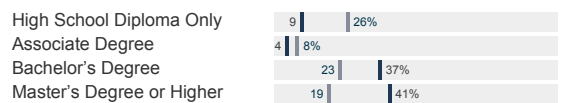


Hispanic includes those of any race. Remaining racial groups include only non-hispanic. 'Other' includes American Indian, Alaska Native, Native Hawaiian, Pacific Islander, two or more races.

Language Spoken at Home



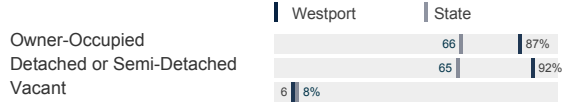
Educational Attainment



Housing

ACS, 2019–2023

	Westport	State
Median Home Value	\$1,245,200	\$343,200
Median Rent	\$2,369	\$1,431
Housing Units	10,326	1,536,049



Schools

CT Department of Education, 2024-25

School Districts

	Available Grades	Total Enrollment	Pre-K Enrollment	4-Year Grad Rate (2022-23)
Westport School District	PK-12	5,281	61	99%
Statewide	-	508,402	20,762	88%

Smarter Balanced Assessments

Met or Exceeded Expectations, 2023-24

	Math	ELA
Westport School District	79%	79%
Statewide	44%	49%

Westport, Connecticut

Labor Force

CT Department of Labor, 2024

	Westport	State
Employed	12,690	1,842,285
Unemployed	390	67,181

Unemployment Rate

Self-Employment Rate*

*ACS, 2019–2023



Catchment Areas of 15mi, 30mi, and 60mi

Massachusetts



Access

ACS, 2019–2023

	Westport	State
Mean Commute Time *	40 min	26 min

No Access to a Car



No Internet Access



Commute Mode



Walking or Cycling



Driving



Working From Home *



Public Transit

CT <i>transit</i> Service	-
Other Public Bus Operations	Norwalk Transit District
Train Service	Metro-North

* 5 year estimates include pre-pandemic data

Fiscal Indicators

CT Office of Policy and Management, State FY 2021-22

Municipal Revenue

Total Revenue	\$235,494,844
Property Tax Revenue	\$198,393,367
per capita	\$7,234
per capita, as % of state avg.	221%
Intergovernmental Revenue	\$20,561,438
Revenue to Expenditure Ratio	101%

Municipal Expenditure

Total Expenditure	\$233,779,675
Educational	\$144,066,529
Other	\$89,713,146

Grand List

Equalized Net Grand List	\$15,471,132,194
per capita	\$564,084
per capita, as % of state avg.	316%
Commercial/Industrial Share of Net Grand List	12%
Actual Mill Rate	18.07
Equalized Mill Rate	12.67

Municipal Debt

Moody's Rating (2024)	Aaa
S&P Rating (2024)	-
Total Indebtedness	\$111,323,797
per capita	\$4,059
per capita, as % of state avg.	138%
as percent of expenditures	48%
Annual Debt Service	\$15,671,103
as % of expenditures	7%

About Town Profiles

The Connecticut Town Profiles are two-page reports of demographic and economic information for each of Connecticut's 169 municipalities. Reports for data are available from profiles.ctdata.org

Feedback is welcome, and should be directed to info@ctdata.org

These Profiles can be used free of charge by external organizations, as long as *AdvanceCT* and *CTData Collaborative* are cited. No representation or warranties, expressed or implied, are given regarding the accuracy of this information.