

# RETAIL OPPORTUNITIES

AT THE NEW LONG ISLAND RAILROAD TERMINAL EXTENSION  
AT GRAND CENTRAL MADISON

RFP Release Date: June 8<sup>th</sup>, 2026

Tour Date: June 23<sup>rd</sup>, 2026

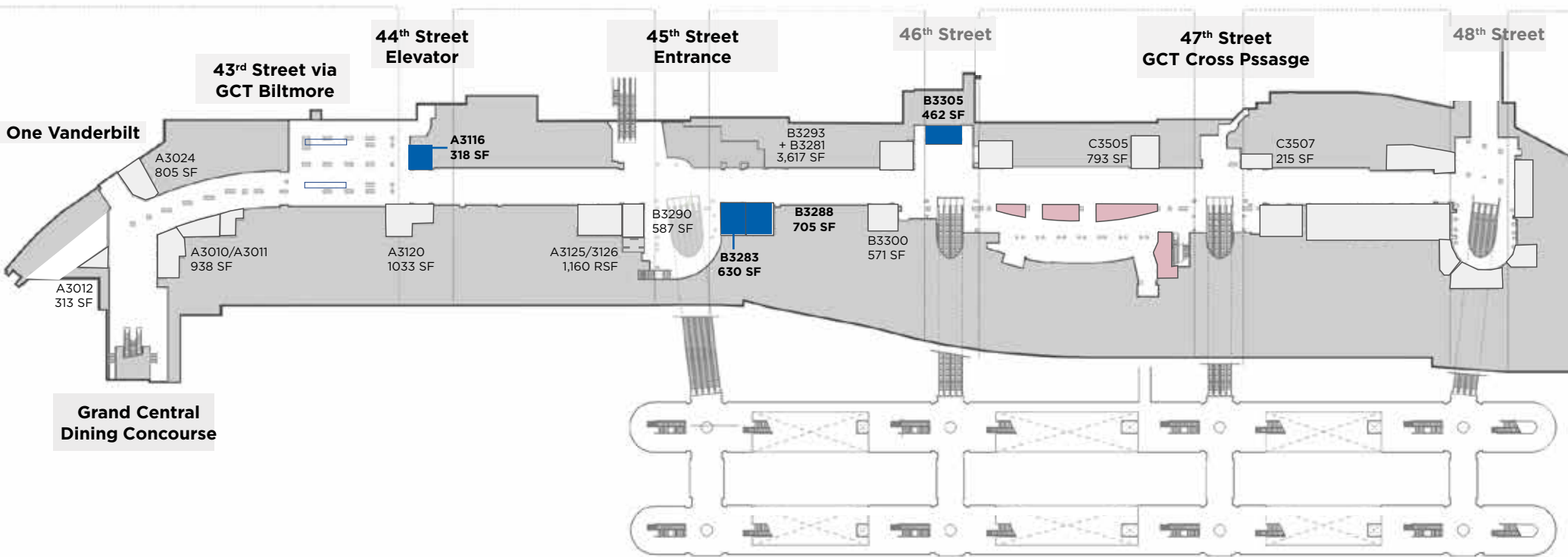
RFP Due Date: July 30<sup>th</sup>, 2026





# GRAND CENTRAL MADISON

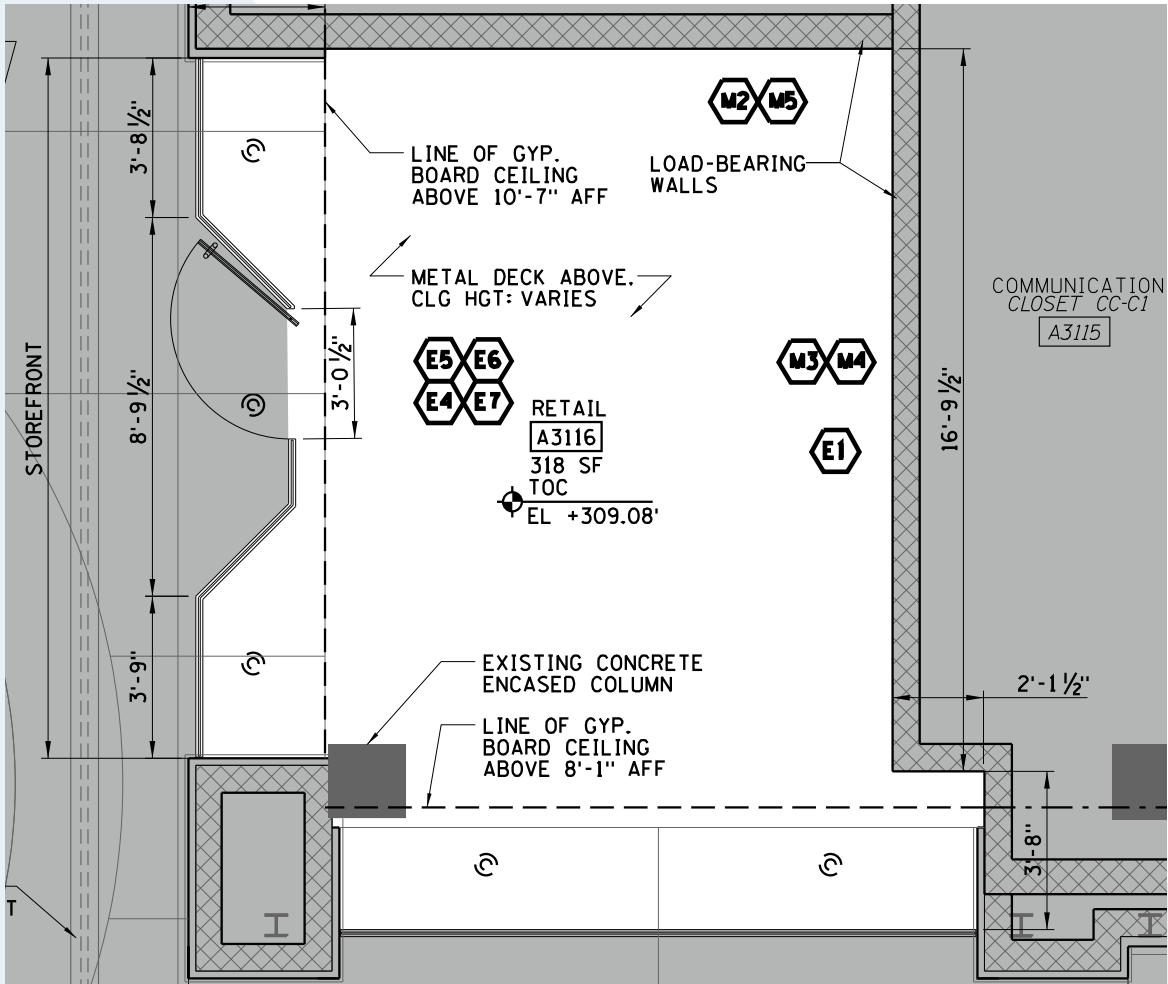
- New LIRR service providing a direct connection to Grand Central Terminal from Queens and Long Island
- Madison Concourse spans 5 city blocks from 43rd to 48th Streets, lined with newly constructed retail opportunities
- Dedicated street level entrances at 45th & Madison and 48th Streets
- Elevator access at 43rd/44th/47th/48th Streets
- Direct access to Grand Central Dining Concourse, Metro-North connections, 4 5 6 7 S subway connections, and 1 Vanderbilt
- Provides a new, convenient, climate-controlled shortcut for street pedestrians and Metro-North commuters
- New class-A office development open or in progress along Madison Avenue (1 Vanderbilt, 343 Madison, JPMChase Headquarters, 415 Madison)
- Quick access to JFK airport via LIRR + AirTrain
- Smaller spaces for greater tenant flexibility



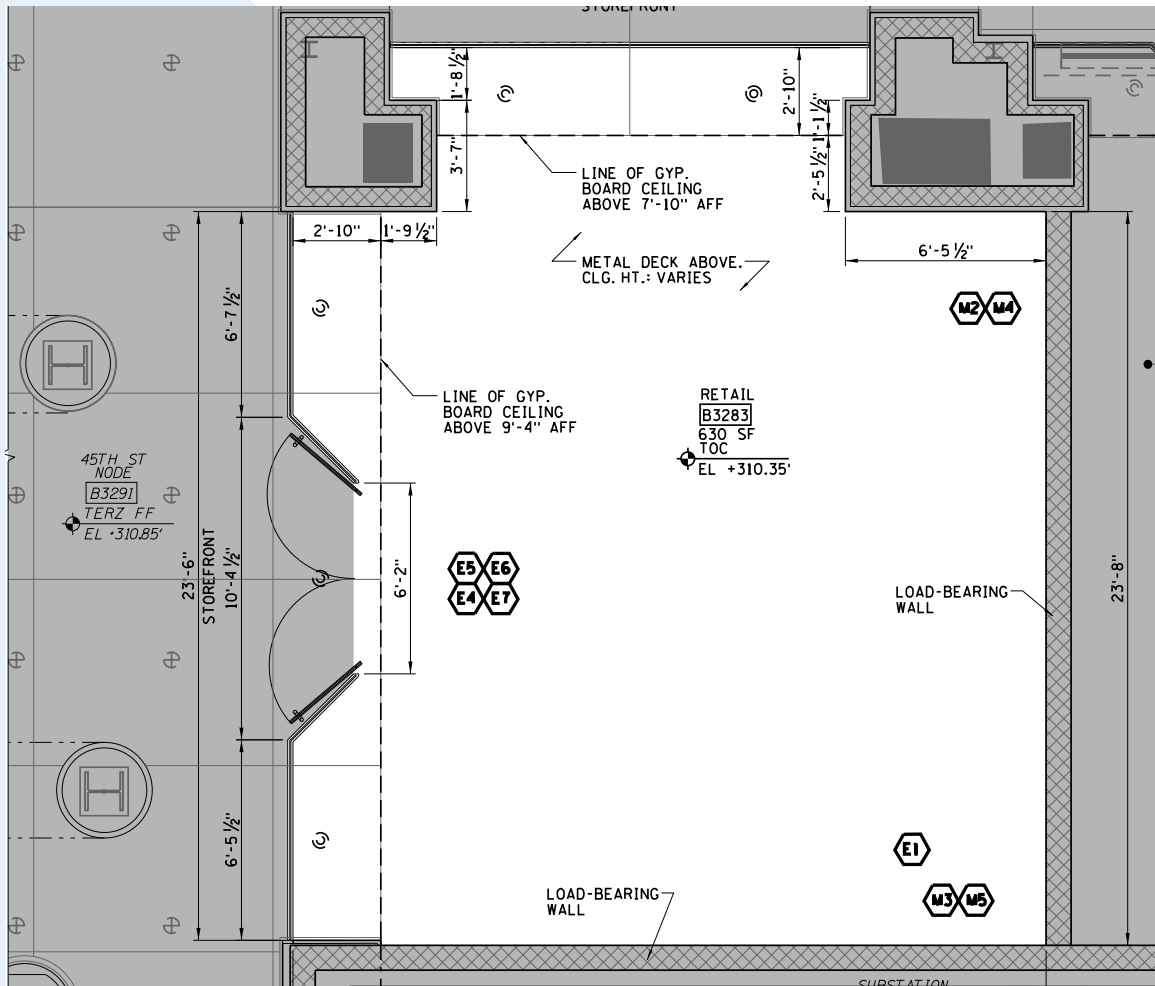
■ AVAILABLE FOR RFP

■ TRACKS BAR & GRILLE

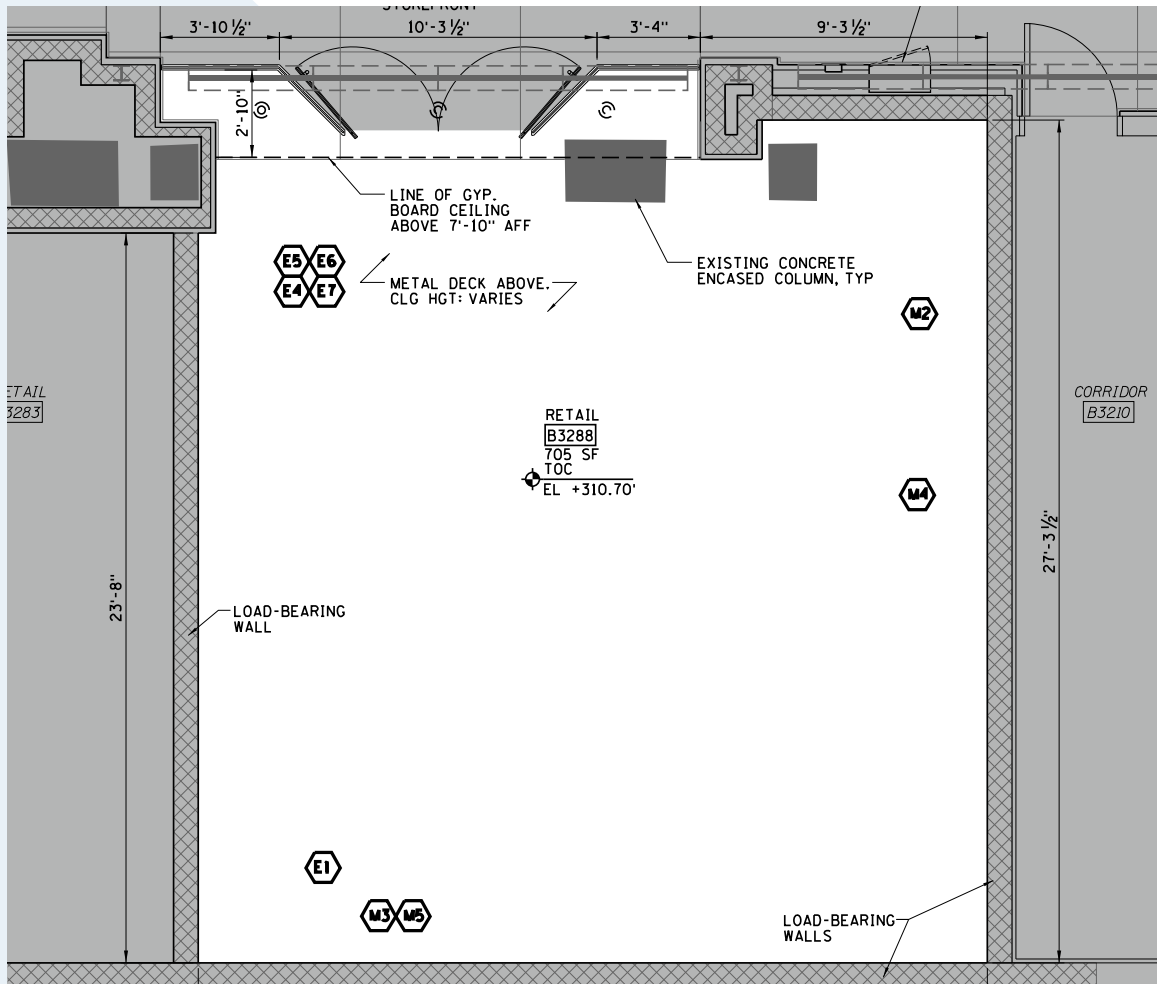
■ FUTURE RETAIL



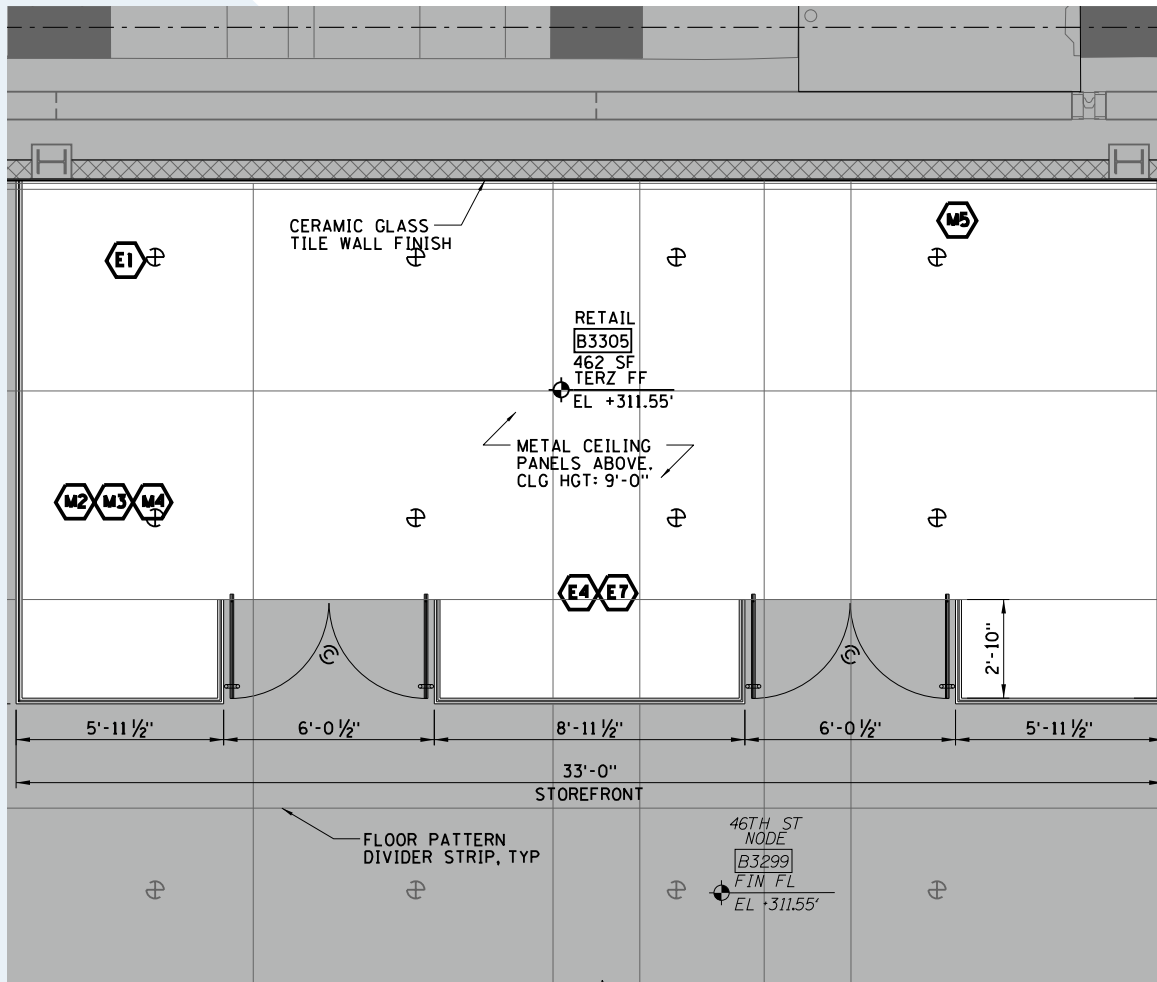
**A3116**  
318 SF



**B3283**  
630 SF



**B3288**  
705 SF



**B3305**  
462 SF

**RFP RELEASE DATE:**

**JUNE 8<sup>TH</sup>, 2026**

**TOUR DATE:**

**JUNE 23<sup>RD</sup>, 2026**

**RFP DUE DATE:**

**JULY 30<sup>TH</sup>, 2026**

**MATTHEW CHMIELECKI**

+1 212 984 6698

[matt.chmielecki@cbre.com](mailto:matt.chmielecki@cbre.com)

**PRESTON CANNON**

+1 212 984 6544

[preston.cannon@cbre.com](mailto:preston.cannon@cbre.com)

**FRANCES ROYER**

+1 212 895 0956

[frances.royer@cbre.com](mailto:frances.royer@cbre.com)



© 2026 CBRE, Inc. All rights reserved. This information has been obtained from sources believed reliable, but has not been verified for accuracy or completeness. You should conduct a careful, independent investigation of the property and verify all information. Any reliance on this information is solely at your own risk. CBRE and the CBRE logo are service marks of CBRE, Inc. All other marks displayed on this document are the property of their respective owners, and the use of such logos does not imply any affiliation with or endorsement of CBRE.

