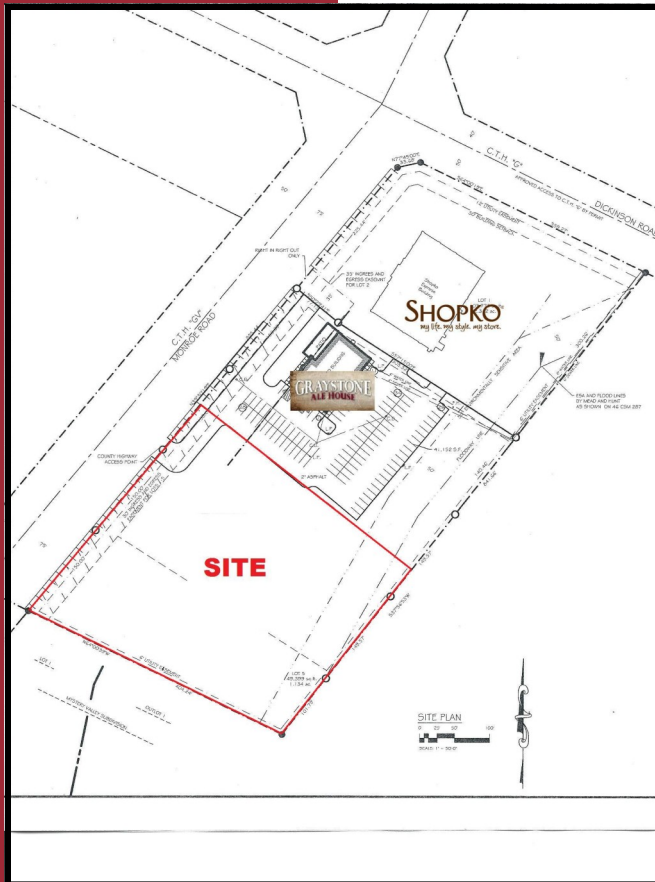


RETAIL PAD

Ledgeview, Wisconsin

Southeast Corner of Monroe Rd & Dickinson Rd



Property: Approx 3.06 acres

Price: \$6.00 / SF

Lot Size: May be Divided

Zoning: NCD

Bob Drifka
Broker/Owner
info@drifkagroup.com

DRIFKA GROUP INC.

N9601 Crystal Drive
Appleton, WI 54915
Phone: 920-993-9065
Fax: 920-993-9065

FEATURES

Located in De Pere 's eastside growth area

Build-to-Suit is Available

Easy access to Monroe Rd & Dickinson Rd

Utilities are available to site

Monroe Road was improved in 2011 from the Site north to Highway 172

This information is from sources deemed to be reliable however
it is not guaranteed and is subject to change.

DRIFKA