

For lease

12642 Bass Lake Road, Maple Grove, MN

5,872 SF Available

Total Building Size	15,423 SF
Space Available	5,872 SF
Rate	\$16.00 PSF
Tax & Cam	\$12.76 PSF

Nearby Development and Tenants

12642 Bass Lake Road is across the road from The BLVD, a new mixed-use development site in the city of Maple Grove. The 75 acre site will boast over 100,000 SF of mixed retail development, 975 multi-family units, 67,000 SF of med-tech space and up to 200,000 SF of industrial development opportunities. New tenants already include Summit Orthopedics (80,000 SF), Coborn's Grocery and Liquor (71,000 SF) and a 975 unit apartment complex (construction to being soon).



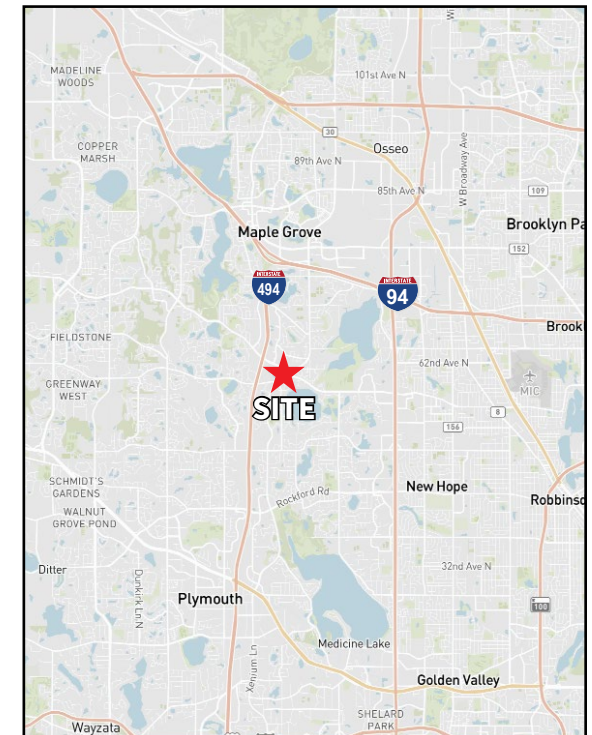
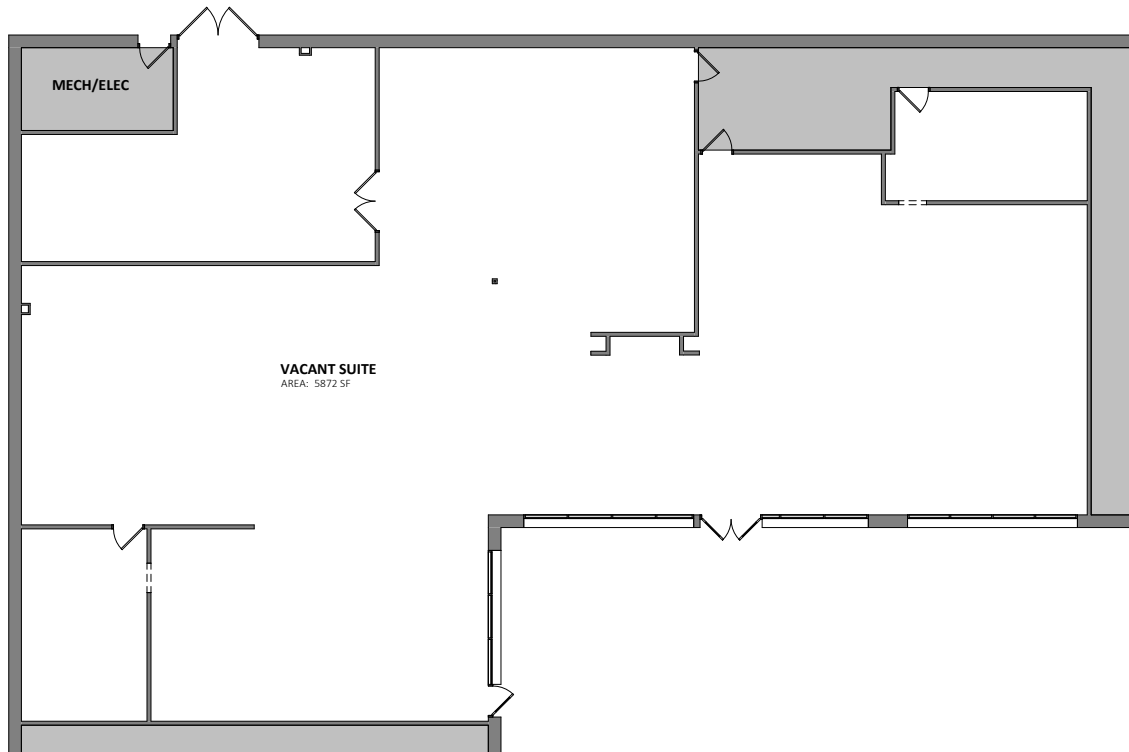
Demographics

	1 Mile	3 Miles	5 Miles
Population	7,287	67,428	207,591
Households	2,963	26,243	79,380
Average HH Income	\$135,898	\$143,455	\$123,522

For lease

12642 Bass Lake Road, Maple Grove, MN

5,872 SF Available



Chris Hickok
Managing Director
chris.hickok@jll.com
+1 612 217 5121

JLL
250 Nicollet Mall
Suite 1000
Minneapolis, MN 55401
Jones Lang LaSalle Americas, Inc. License #: CO508577000