

# 1401 VERMONT

## **CORKTOWN**





# CORKTOWN OFFICE SUITES

Positioned along the Southwest Greenway in Corktown, 1401 Vermont sits within Detroit's rapidly evolving technology and innovation district, just blocks from Michigan Central and the Book Depository, with direct access to the city's premier hub for mobility, entrepreneurship, and advanced manufacturing.

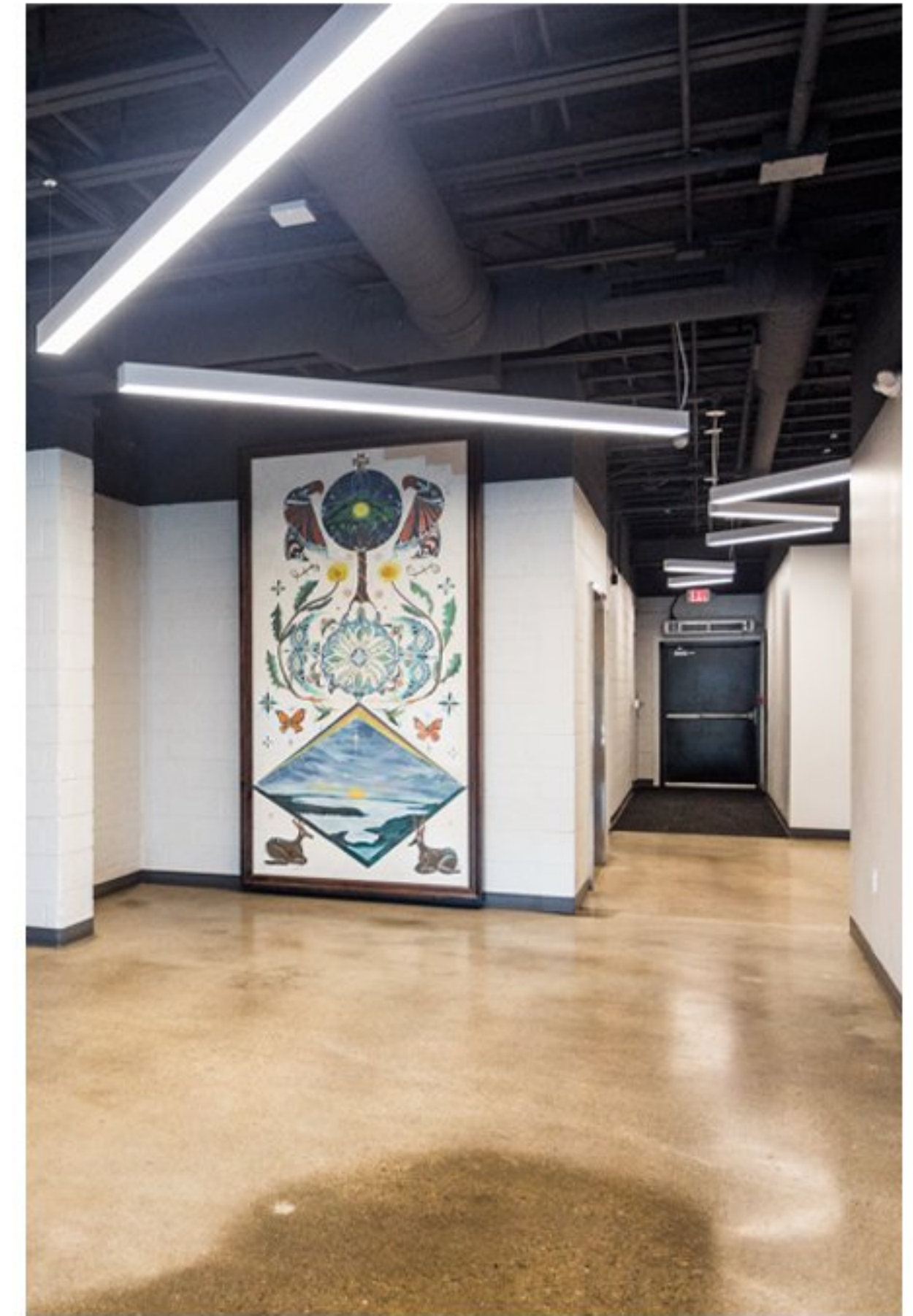


TABLE OF CONTENTS

PROPERTY OVERVIEW **04**

FLOOR PLANS **05**

PROPERTY GALLERY **06**

LOCATION OVERVIEW **08**

CONTACT **11**

Lease Rate

**\$19 / RSF**

---

Lease Type

**Modified Gross**

---

Neighbors

Rocket Data Center, Michigan Central, Ford Motor Company, Ford Motor Company's Book Depository, Newlab at Michigan Central, Southwest Greenway, Airspace Link, IMA, Slows Bar BQ, Metropolis Cycles, Mercury Burger Bar, Grandma Bob's, and the UPS Detroit International Import Hub.

Address

**1401 Vermont**

---

Location

**NW Corner of Vermont  
and Porter**

---

Neighborhood

**Corktown**

Space Size

**1,039 - 2,751 SF**

---

Onsite Parking

**Available**

---

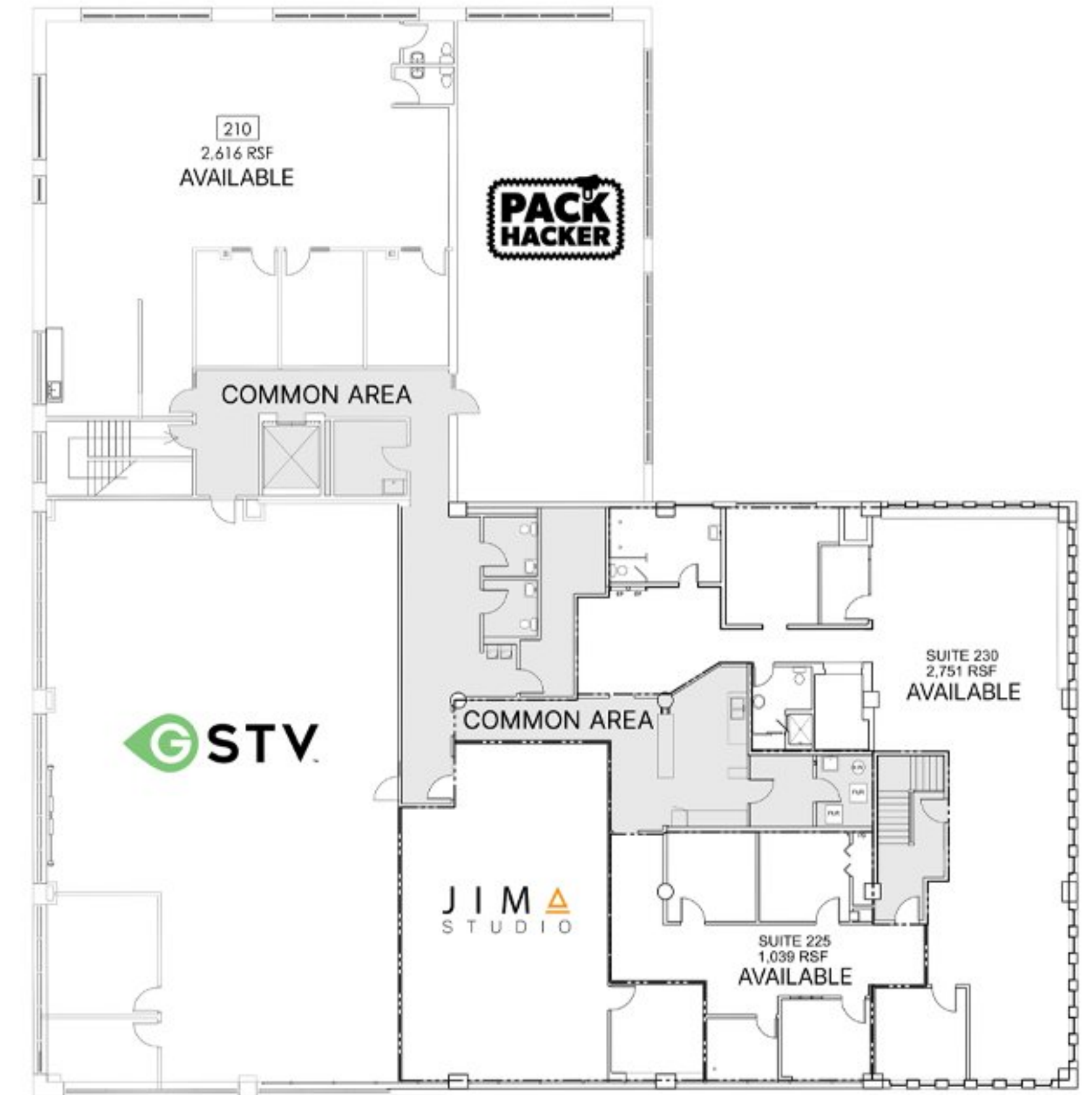
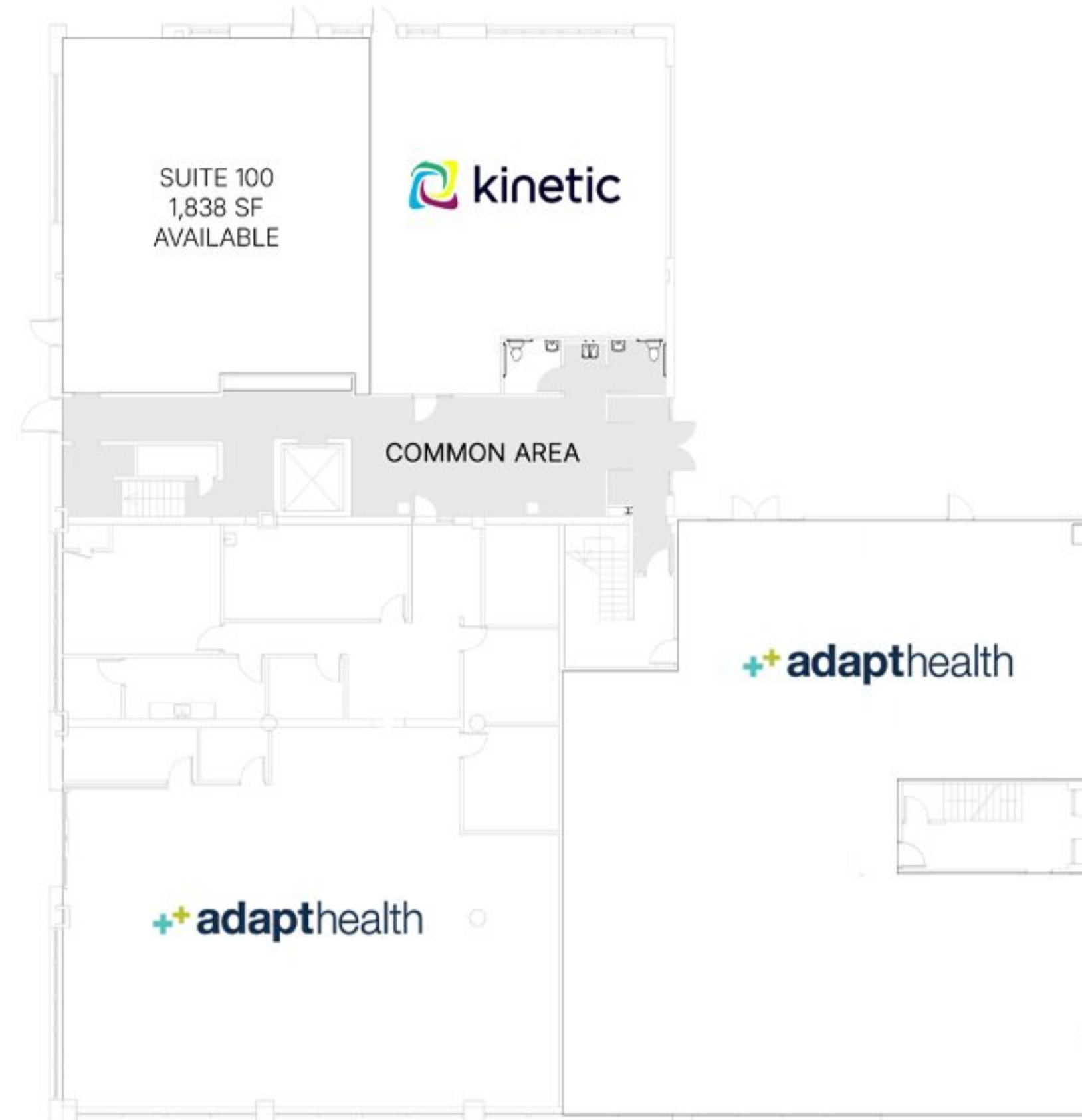
Modern office suites ranging from 1,039 to 2,751 square feet offer efficient layouts and a professional work environment. Recent capital improvements include renovated common areas and refreshed building corridors, enhancing the overall tenant experience. Onsite parking and secure 24-hour badge access, providing convenience and flexibility for businesses of all sizes.

## Floor Plan

Office suites available from 1,039 SF to 2,616 SF, accommodating a variety of business needs and team sizes

Well-maintained shared kitchen facilities and common-area restrooms provide convenience for tenants and staff

Flexible floor plans featuring both open-concept workspaces and traditional office configurations to support a range of operational requirements





Window-lined creative office featuring an expansive window line, polished concrete floors, a welcoming reception area, private offices, open collaborative workspace, dedicated phone booth room, and in-suite restrooms, creating a functional and modern environment for a variety of office users.

Suite 230

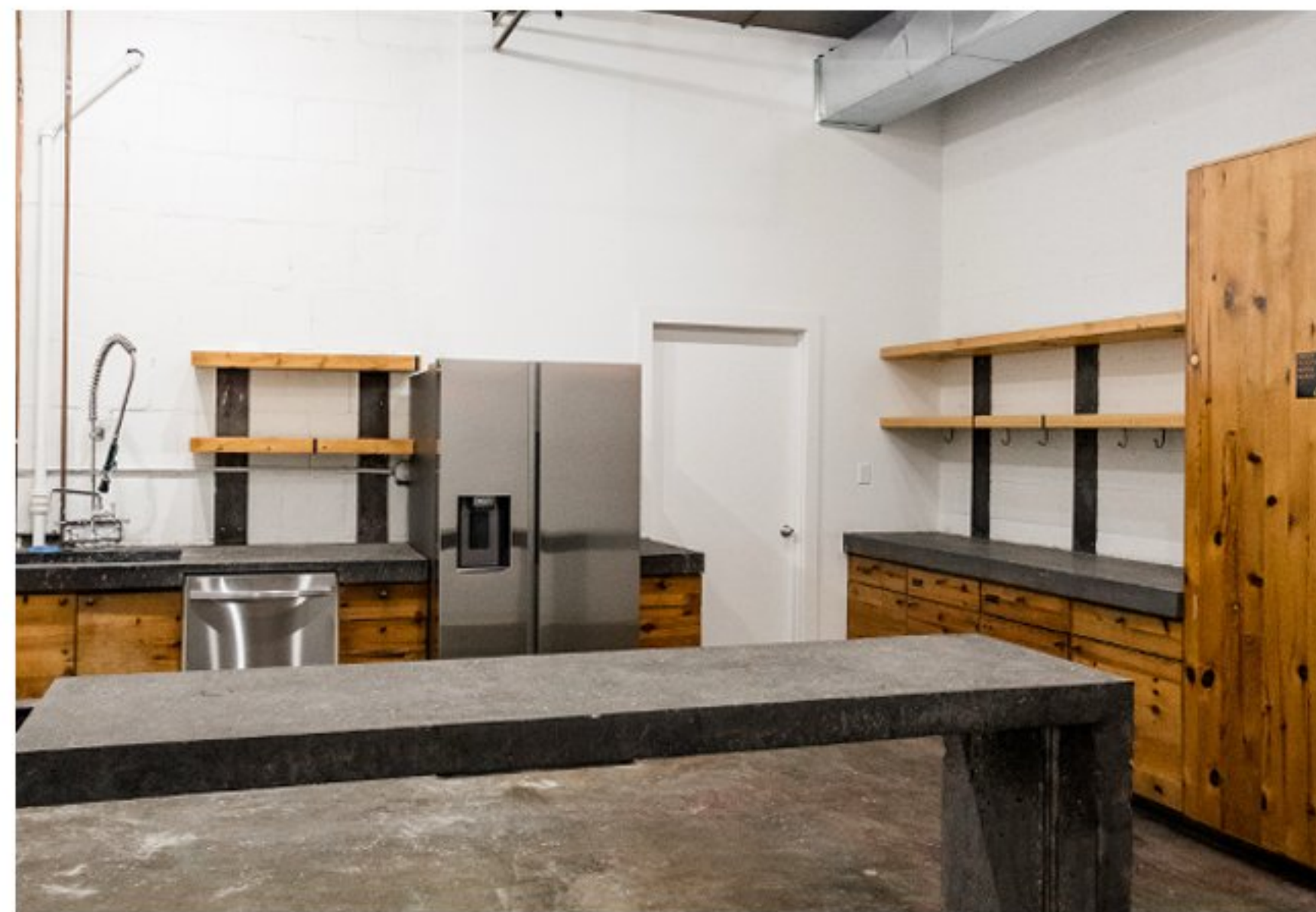




Bright, loft-style office suite with expansive window frontage, polished concrete floors, three private offices / conference rooms, and kitchenette

Suite 210





Four private offices with direct access to the shared second-floor kitchenette and restrooms.

Suite 225

# CORKTOWN DETROIT

Detroit's oldest neighborhood, Corktown blends historic charm with modern energy. Its tree-lined streets and restored brick buildings house acclaimed restaurants, craft breweries, and creative businesses.

Just west of downtown, Corktown is home to the revitalized Michigan Central innovation campus, drawing entrepreneurs, residents, and visitors alike to a walkable district alive with culture, community, and possibility.





**TRANSPORTATION  
INNOVATION ZONE**

**1401 VERMONT**

O'CONNOR

A trusted and respected member of the community, O'Connor real estate brings 20 years of experience and expertise to the commercial office

For more information about our properties, please contact O'Connor Real Estate



**Vincent Mazzola**  
+ 313 704 2678  
vincent@oconnordetroit.com

The information used in this marketing material was taken from sources believed to be reliable. O'Connor Real Estate makes no representation, warranty, or endorsement made as to the accuracy, reliability, adequacy, or completeness of any information or analysis contained herein and disclaims any and all liability that may be based on such information, errors therein or omissions therefrom. You and your advisors should conduct a careful and independent investigation of the property to determine your satisfaction with the suitability of the property for your needs.