

101 Alexdon Road

North York, ON



WIL IRONS

Senior Vice President

wil.iron@royallepagecommercial.com

ILIJAN RASHID

Sales Representative

ilijan@royallepagecommercial.com

Commercial | For Sub Lease

Property Introduction

Well-located in Downsview, this warehouse offers exceptional connectivity just minutes from Keele/Finch subway station, with quick access to Highways 401, 407, and 400. The property provides excellent shipping and parking, along with a separate front-area entrance that offers added flexibility for businesses requiring office, display, client-facing, or operational support space.

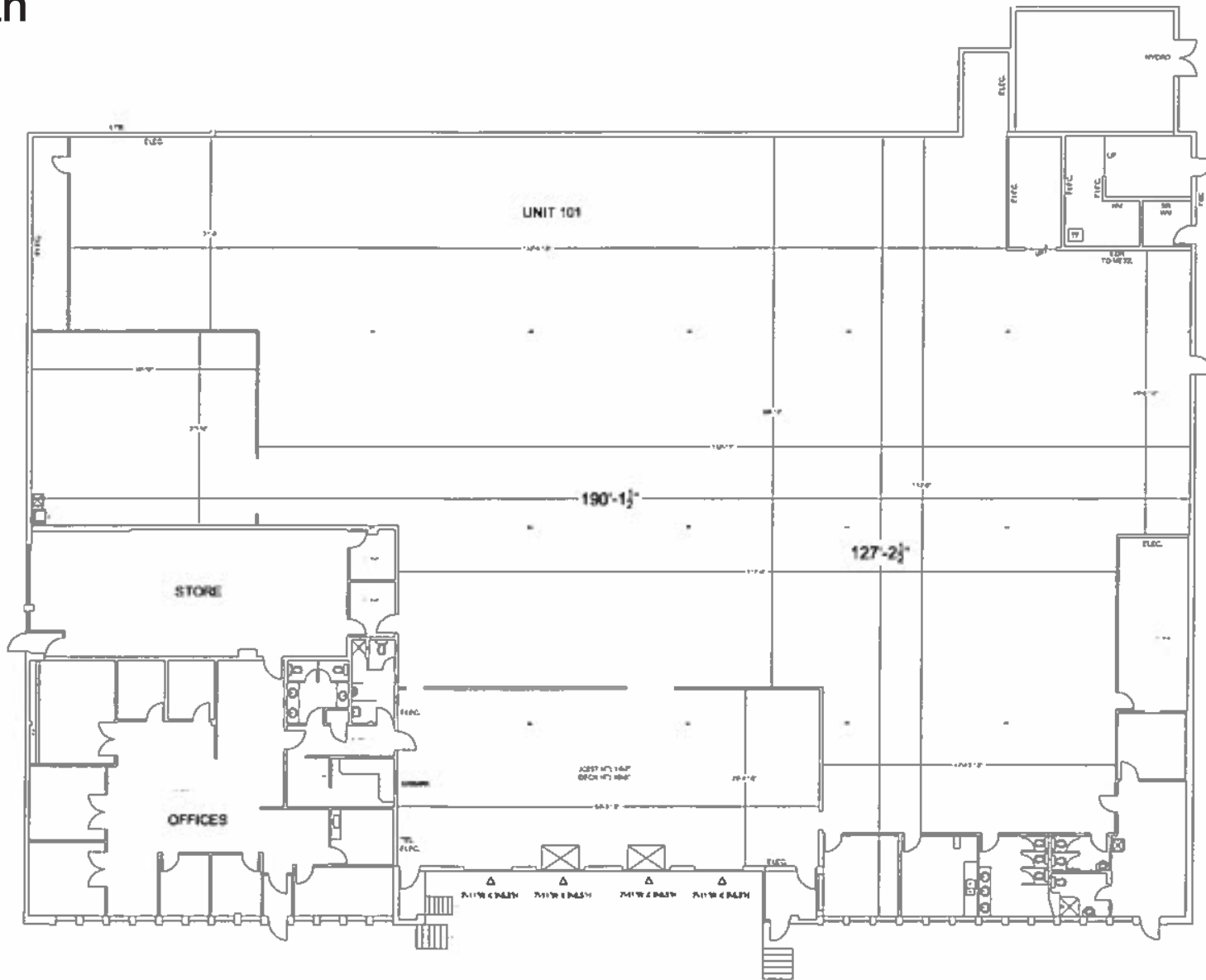
Available on a 2-year sublease term, the space is competitively priced and situated in a busy corridor with strong access to labour, transit, and key amenities.

Details

APPROX. TOTAL SPACE	24,819 sq ft	DOORS (T/L)	4
APPROX. CLEAR HEIGHT	14ft 7in	DOORS (D/I)	1
SUB-LEASE EXPIRY	August 31st, 2028		
NET RENT	\$9.50	TMI	\$3.90 (2025)



Floor Plan



Photos



Photos



Photos





Commercial | For Sub Lease

101 Alexdon Road

North York, ON

WIL IRONS

Senior Vice President

wil.iron@royallepagecommercial.com

ILIJAN RASHID

Sales Representative

ilijan@royallepagecommercial.com

Not intended to solicit sellers or buyers currently under contract. Prospective purchasers should satisfy themselves as to the accuracy of the information contained in this feature sheet. All measurements are approximate. The statements contained herein are based on sources which we believe are reliable, but for which we assume no responsibility. All Rights Reserved.