




Unit G - 165 Eagle Drive, Winnipeg, Manitoba

Omands Creek Industrial Space

For Lease 



Property Details

+/- 2,045 sq. ft.

UNIT SIZE

\$10.95/sq. ft.

NET LEASE RATE

\$5.30/sq. ft.

CAM & TAX (PLUS MANAGEMENT FEE)

M1 - Manufacturing Light

ZONING

Grade level

LOADING

Features

- Prime location within Omands Creek Industrial Park, offering convenient access to major transportation routes, including Oak Point Highway
- Close to Winnipeg James Armstrong Richardson International Airport and CentrePort Canada
- On-site parking available
- Features 1 grade level door
- Ceiling height of approximately +/- 16 feet
- Ideal for manufacturing and warehousing operations



Highlights



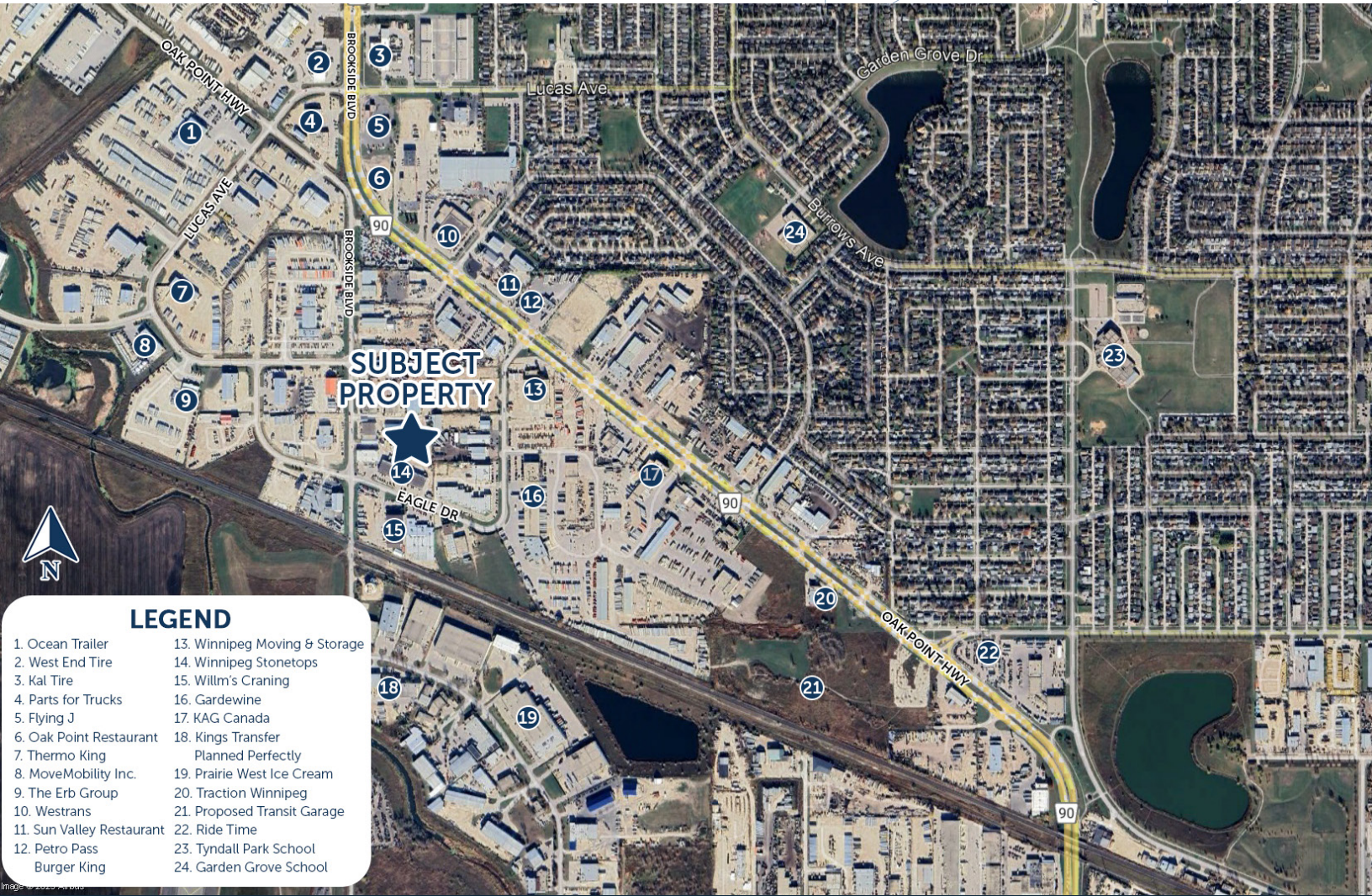
SITUATED IN
Omands Creek
Industrial Park



Easy Access
to a variety of
amenities in the
immediate area



Ideally Suited For
Manufacturing &
Warehousing



LEGEND

- 1. Ocean Trailer
- 2. West End Tire
- 3. Kal Tire
- 4. Parts for Trucks
- 5. Flying J
- 6. Oak Point Restaurant
- 7. Thermo King
- 8. MoveMobility Inc.
- 9. The Erb Group
- 10. Westrans
- 11. Sun Valley Restaurant
- 12. Petro Pass
Burger King
- 13. Winnipeg Moving & Storage
- 14. Winnipeg Stonetops
- 15. Willm's Craning
- 16. Gardewine
- 17. KAG Canada
- 18. Kings Transfer
Planned Perfectly
- 19. Prairie West Ice Cream
- 20. Traction Winnipeg
- 21. Proposed Transit Garage
- 22. Ride Time
- 23. Tyndall Park School
- 24. Garden Grove School

Connect with us today!

iciproperties.com

Tyson Preisentanz*

SENIOR VICE PRESIDENT

tpreisentanz@iciproperties.com

204-782-6183

Jared Kushner*

VICE PRESIDENT

jkushner@iciproperties.com

204-294-1087

DISCLAIMER The information contained herein has been obtained from sources believed to be reliable; however, neither the Vendor/Landlord nor ICI Properties makes any representations, warranties, or guarantees, express or implied, as to the accuracy, completeness, or currency of such information. Any projections, opinions, assumptions, or estimates are provided for illustrative purposes only and may differ materially from actual results. Some images or renderings used in this brochure may be enhanced or generated using artificial intelligence (AI) for illustrative purposes and may not depict actual properties or conditions. Prospective purchasers and tenants are strongly advised to conduct their own independent investigations and due diligence to verify all information. The property and any offering terms are subject to change or withdrawal without notice. Neither the Vendor/Landlord nor ICI Properties shall be liable for any direct, indirect, incidental, consequential, or special losses or damages arising from reliance upon this information or any omission. In the event the recipient has executed a confidentiality or nondisclosure agreement in connection with this property, the terms of such agreement shall govern. ©2026 ICI Properties. All rights reserved.

*Services provided by 2023 Tyson Preisentanz Personal Real Estate Corporation

*Services provided by Jared Kushner Personal Real Estate Corporation

For Lease ➤

Unit E - 165 Eagle Drive, Winnipeg, Manitoba
iciproperties.com