

# 50 E. Chicago

A: 2,040 SF

B: 1,462 SF

C: 1,462 SF

D: 1,472 SF

FOUR RESTAURANT OR RETAIL OPPORTUNITIES  
STREETERVILLE, CHICAGO, IL



[savills.us](https://www.savills.us)

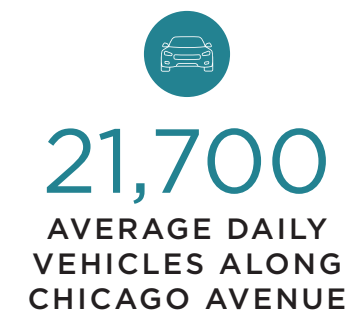
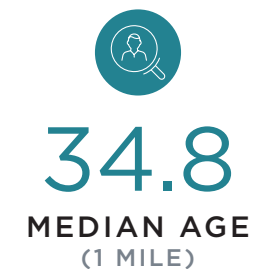
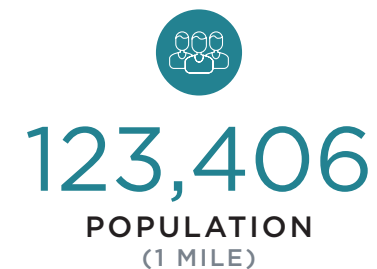


## THE OPPORTUNITY

50 East Chicago provides unique retail or restaurant opportunities at the junction of River North, the Gold Coast, and North Michigan Avenue. This prime, seven-day-a-week location offers significant foot traffic from a wide array of workers, shoppers, residents, and tourists alike. In addition, the spaces are in close proximity to Northwestern Hospital and Loyola University, as well as the CTA Red Line.

## TWO OF THE FOUR SPACES HAVE RESTAURANT OPPORTUNITIES

### 2024 DEMOGRAPHICS



### NOTABLE AREA CO-TENANTS

- FLACO'S TACOS
- GNC
- THE UPS STORE
- STREETER'S TAVERN
- PIPPIN'S TAVERN
- CHICK-FIL-A
- THE PARK HYATT
- NORDSTROM RACK
- CANADA GOOSE
- ANTHROPOLOGIE
- POTBELLY'S
- 7-ELEVEN
- GIORDANO'S
- JAKE MELNICK'S
- EPIC BURGER
- CHIPOTLE
- LOYOLA UNIVERSITY
- CHICAGO
- ROSEBUD ON RUSH
- FRIENDS SUSHI
- MCDONALD'S
- BISTRONOMIC
- TRULUCK'S

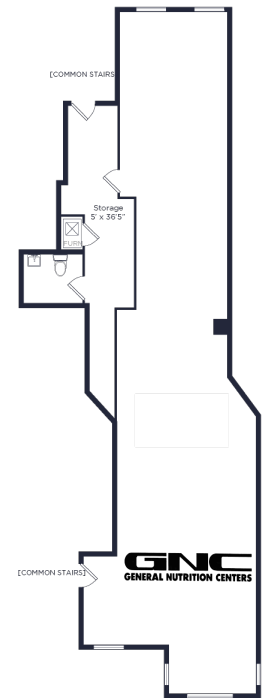
FLOORPLANS

GROUND FLOOR

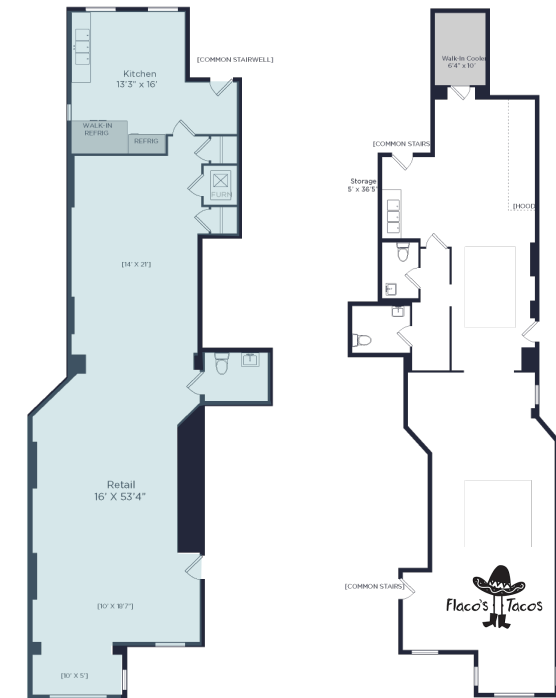
**A** 2,040 SF



**B** 1,462 SF



**C** 1,462 SF  
Existing Black-Iron



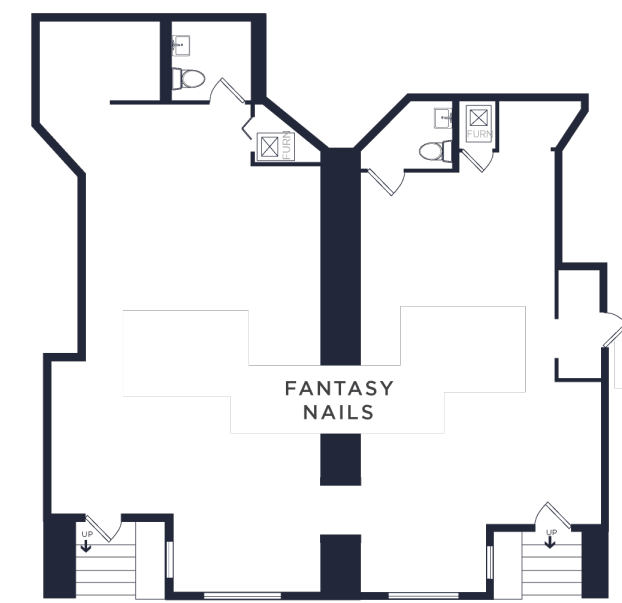
**D** 1,472 SF



**N** CHICAGO AVE

**N** CHICAGO AVE

LOWER LEVEL



**KIMBERLY WISKUP**

+1 312 595 2917  
kwiskup@savills.us

**PHIL GOLDING**

+1 312 404 6673  
pgolding@savills.us



**savills.us**