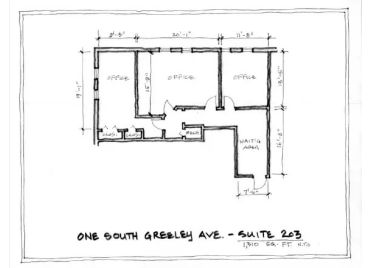
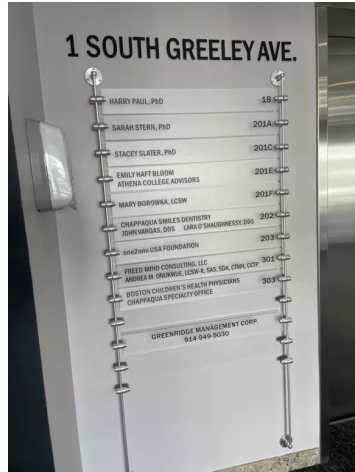
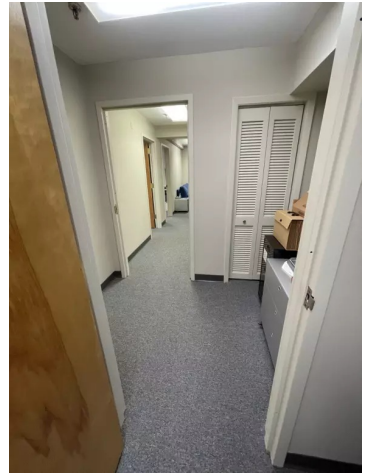
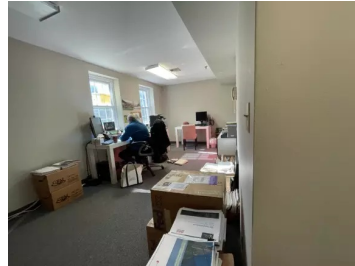
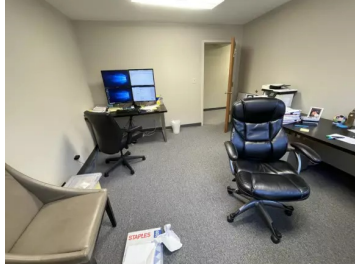


1310 SF Office Space in Chappaqua NY

1 S Greeley Ave #302, Chappaqua, NY 10514, USA



Property Overview

Price/Rent PSF	Inquire
Asset Type	Office
Secondary Asset Type	Medical
Trade Type	Lease
SQ. FT. Available	1310.00
Date Available	07/18/2022

Contact



Perlmutter Properties
Enterprise

✉ info@perlprop.com

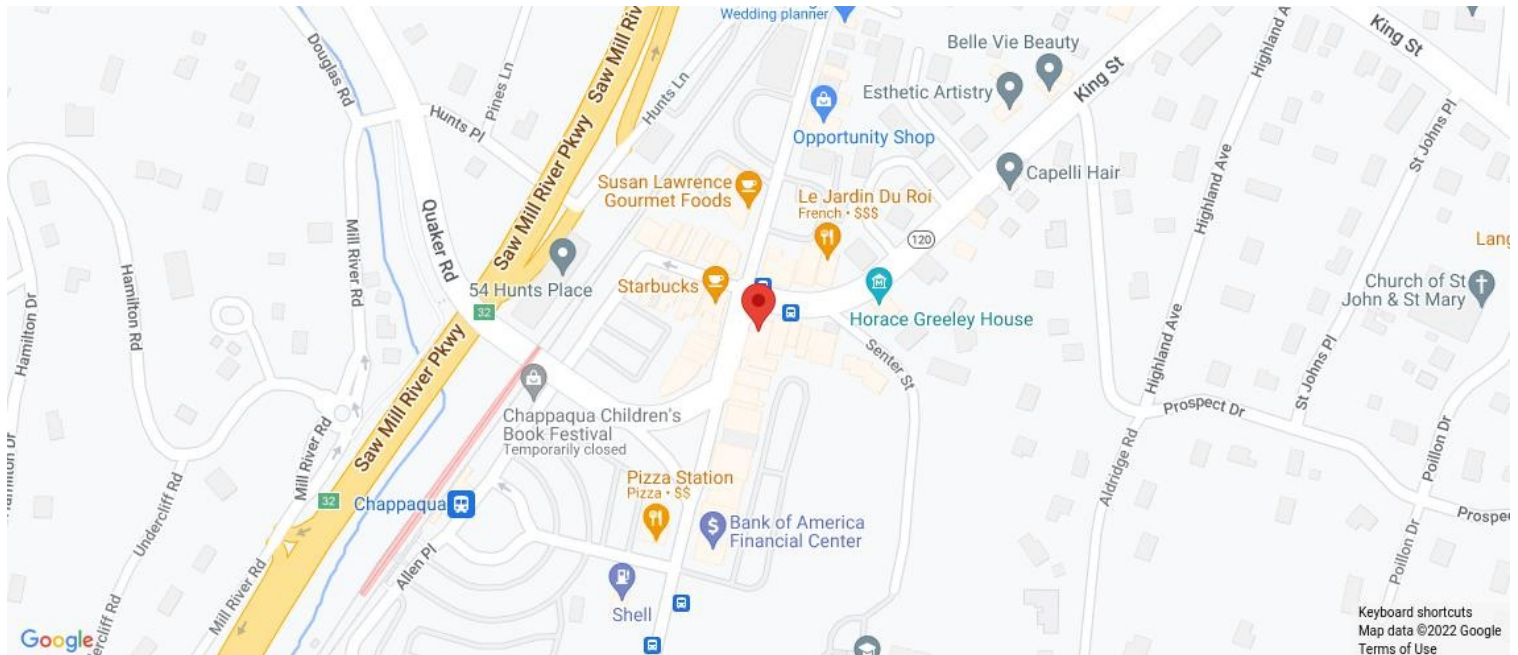
☎ +1 (914) 686-8900 ext. 1

🌐 www.perlmutterproperties.com

Description

A 1310 SF professional office space is available for immediate occupancy at the mixed use office/retail building at 1 South Greeley Avenue in downtown Chappaqua NY.

Location



THE INFORMATION ABOVE IS FROM SOURCES WE BELIEVE TO BE RELIABLE. HOWEVER, WE HAVE NOT VERIFIED ITS ACCURACY AND MAKE NO GUARANTEE, WARRANTY OR REPRESENTATION ABOUT IT. IT IS SUBMITTED SUBJECT TO THE POSSIBILITY OF ERRORS, OMISSIONS, CHANGE OF PRICE, RENTAL OR OTHER CONDITIONS, PRIOR SALE, LEASE OR FINANCING, OR WITHDRAWAL WITHOUT NOTICE.