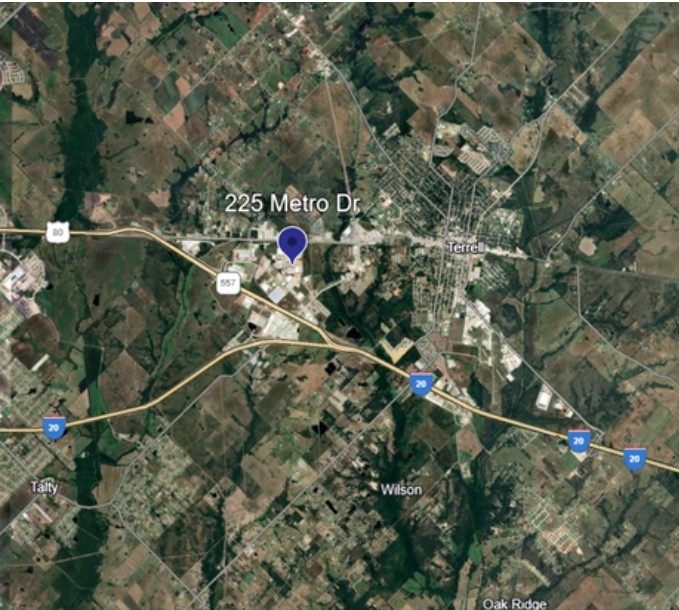


FOR LEASE

AVAILABLE: 37,555 SF

225 METRO DR, BLDGS 200 - 300, TERRELL, TX 75160



NIKO PADILLA

Market Director

(214) 226-3381

npadilla@mercerc-company.com

- Suite 300:
 - 30,525 SF
 - 20' Clear Height
 - 19 Grade Level Doors
- Suite 200:
 - 7,030 SF
 - 16' Clear Height
 - 5 Grade Level Doors
- 4.25 AC Fenced & Gated Lot
- Concrete & Gravel Lot

WILLIAM LEMASTERS, SIOR

Vice President

(214) 998-8076

wlemasters@mercerc-company.com

AVAILABLE: 37,555 SF

225 METRO DR, BLDGS 200 - 300, TERRELL, TX 75160

BLDG 300



BLDG 200



NIKO PADILLA

Market Director

(214) 226-3381

npadilla@mercercorpany.com

WILLIAM LEMASTERS, SIOR

Vice President

(214) 998-8076

wlemasters@mercercorpany.com

The information contained herein has been given to us by the owner of the property or other sources we deem reliable. We have no reason to doubt its accuracy, but we do not guarantee it. All information should be verified before purchase or lease.

Mercer Company
2461 N Stemmons Fwy, Dallas, TX 75207

mercercorpany.com