



Colliers

Accelerating success.

For Sale or Lease

Vacant Fully Operational Assisted Living Facility

515 Tomoka Avenue

Ormond Beach, FL 32174

**Investment Advisors**

**Joe Rossi, CCIM**

Executive Vice President

+1 407 230 2809

[joe.rossi@colliers.com](mailto:joe.rossi@colliers.com)

**Nejha Edwards**

Senior Client Services Coordinator

+1 407 362 6124

[nejha.edwards@colliers.com](mailto:nejha.edwards@colliers.com)



# Investment Summary

## Property Highlights



**Size**  
Two Buildings total 16,102± SF | 3.07 AC



**Opportunity**  
Owner/User or Investment Medical



**Built/Renovated**  
Bldg. A/B - 2000 | Bldg. C/D - 2001



**Parking Ratio**  
22 Parking Spaces (1.55/1000 SF)



**Location Perks & Connectivity**  
Ormond's public beaches, Daytona Beach International Airport, Daytona International Speedway, and destination shopping centers along LPGA Blvd and International Speedway Blvd.



**Zoning**  
R-4C (Single-Family Cluster and Townhouse Zoning District)

**\$2,950,000**  
Asking Price | Lease Rate: Call for Details



Colliers as owner's exclusive advisor, is pleased to present for sale or lease 515 Tomoka Avenue. offers compelling opportunity for owner/users or investors seeking to reposition it for use such as assisted living facilities (ALF), behavioral health centers, or continued operation as a behavioral health hospital. The building is located at Tomoka Avenue, Ormond Beach, FL 32174 (the "Property") and offers excellent accessibility, located just off West Granada Boulevard (SR 40)—a major east-west corridor in Ormond Beach—and less than two miles from Interstate 95, providing quick regional connectivity. in the Deltona–Daytona Beach–Ormond Beach MSA. Close proximity to Ormond & Daytona public beaches, Daytona Beach International Airport, Daytona Speedway, and destination shopping centers along LPGA Blvd and International Speedway Blvd.

515 Tomoka Ave strategic positioning offers the following advantages to its occupants:

- The property is near medical centers, retail hubs, and tourist destinations, making it ideal for assisted living, or healthcare.
- Property offers accessibility, with close proximity to major transportation corridors including Granada Blvd and Interstate 95.
- Ormond Beach is experiencing steady economic and population growth, positioning occupants to benefit from increasing demand and long-term value appreciation.









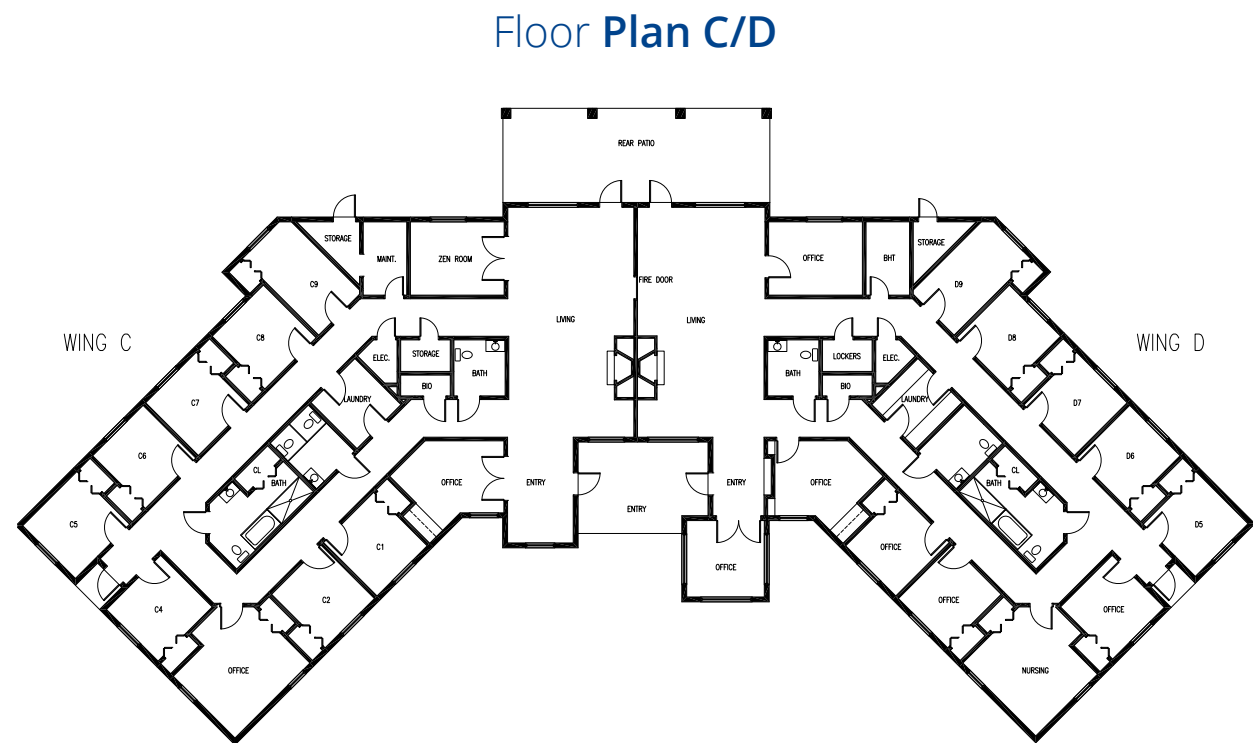
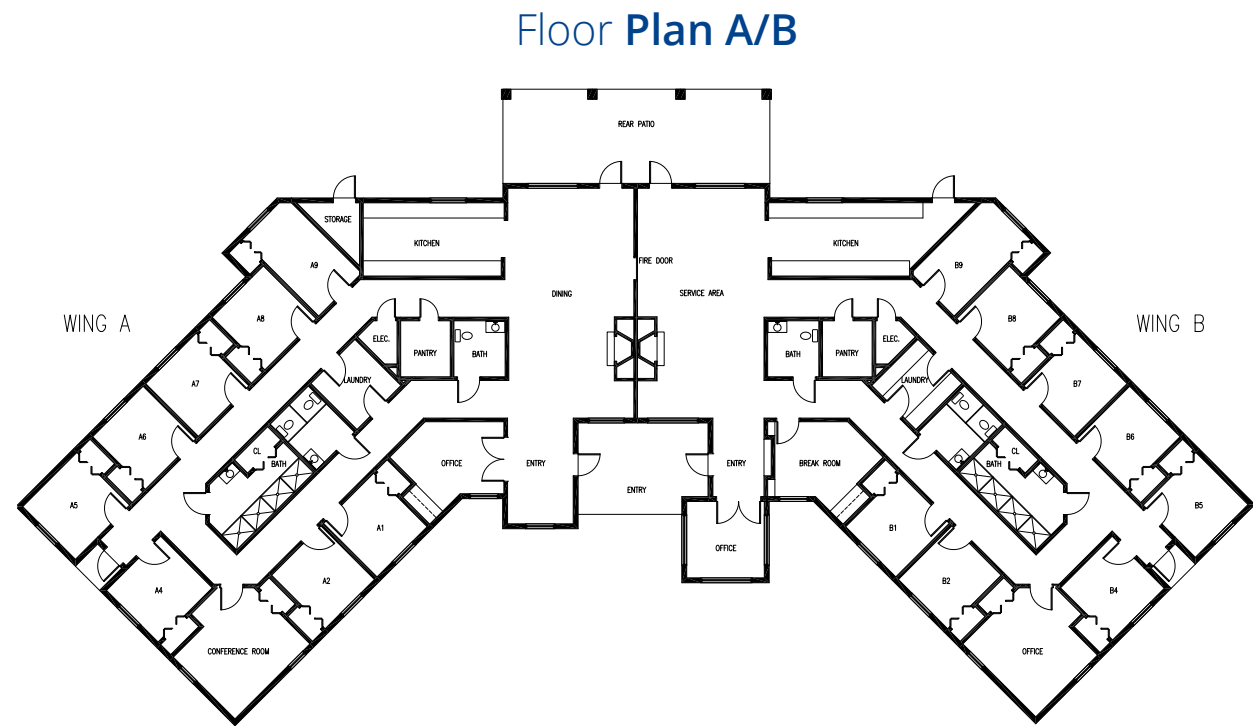
# Area Demographics

Strategically positioned along Florida's Atlantic coast, the Deltona-Daytona Beach-Ormond Beach MSA offers a dynamic blend of accessibility, growth, and lifestyle appeal. Anchored by major transportation corridors like I-95 and I-4, the region provides seamless connectivity to Orlando (just an hour away) and Jacksonville, while also benefiting from proximity to Daytona Beach International Airport and the Port of Jacksonville.

The area is experiencing steady economic expansion, with strong job growth in healthcare, finance, and professional services, supported by a civilian labor force of over 320,000. Residents and businesses alike enjoy a rich mix of amenities, from the iconic Daytona International Speedway and vibrant beachfront to retail hubs like Tanger Outlets and the Volusia Mall. With a growing population nearing 700,000 and a diversifying employment base, the MSA is emerging as a key destination for both commercial investment and residential development. Whether you're seeking visibility, workforce access, or lifestyle-driven appeal, this region offers a compelling environment for growth.

				
	Population	Daytime Population	Average HH Income	Households
1 Mi.	6,356	9,535	\$66,388	2,936
2Mi.	28,355	30,157	\$82,219	13,003
3Mi.	52,211	53,793	\$90,853	24,375
5Mi.	106,072	112,812	\$91,372	48,449

# Floor Plan(s)



# Additional Features

- Vacant Fully Operational Assisted Living Facility
- Offers excellent accessibility, located just off West Granada Blvd (SR 40), a major east-west corridor in Ormond Beach and less than two miles from Interstate 95, providing quick regional connectivity.
- Ideally positioned within a thriving healthcare corridor in Ormond Beach
- Outstanding Building Condition with many recent Capital Projects High Quality Recent Renovations





Colliers

## Colliers Orlando

255 Orange Ave, Suite 1300  
Orlando, Florida 32801  
+1 407 843 1723

[Click to Access  
Confidentiality  
Agreement](#)



### Investment Advisors

**Joe Rossi, CCIM**  
Executive Vice President  
+1 407 230 2809  
[joe.rossi@colliers.com](mailto:joe.rossi@colliers.com)

**Nejha Edwards**  
Senior Client Services Coordinator  
+1 407 362 6124  
[nejha.edwards@colliers.com](mailto:nejha.edwards@colliers.com)

This document has been prepared by Colliers International for advertising and general information only. Colliers International makes no guarantees, representations or warranties of any kind, expressed or implied, regarding the information including, but not limited to, warranties of content, accuracy and reliability. Any interested party should undertake their own inquiries as to the accuracy of the information. Colliers International excludes unequivocally all inferred or implied terms, conditions and warranties arising out of this document and excludes all liability for loss and damages arising there from. This publication is the copyrighted property of Colliers International and/or its licensor(s). ©2026. All rights reserved.