

# EAST BASELINE PROFESSIONAL PLAZA

1250 E BASELINE RD | TEMPE, AZ 85283

**OFFICE BUILDING AVAILABLE FOR LEASE**



The information contained herein has been obtained from various sources. We have no reason to doubt its accuracy; however, J & J Commercial Properties, Inc. has not verified such information and makes no guarantee, warranty or representation about such information. The prospective buyer or lessee should independently verify all dimensions, specifications, floor plans, and all information prior to the lease or purchase of the property. All offerings are subject to prior sale, lease, or withdrawal from the market without prior notice. Effective 05/20/26



**COMMERCIAL PROPERTIES INC.**

Locally Owned. Globally Connected. COBPAAC

TEMPE: 2323 W University Drive, Tempe, AZ 85281 | 480.966.2301  
SCOTTSDALE: 8767 E Via de Commercio, Suite 101, Scottsdale, AZ 85258 | www.cpiaz.com

**JOHN HART**  
D 480.966.4373  
M 602.526.9499  
jhart@cpiaz.com

**MATT ZACCARDI**  
D 480.966.7625  
M 602.561.1339  
mzaccardi@cpiaz.com

**KATY HAUG**  
D 480.623.2328  
M 816.808.7347  
khaug@cpiaz.com

# PROPERTY OVERVIEW



**ADDRESS**  
1250 E Baseline Rd  
Tempe, AZ



**PARKING**  
5/1,000 SF



**TENANCY**  
Multi-Tenant



**ZONING**  
PCC-2, Tempe



**OFFICE USE**  
Office or Medical



## AVAILABLE FOR LEASE

### SUITE 101 | ±1,646 SF

**\$18.50 PSF/YR Modified Gross**

- RECEPTION
- CONFERENCE ROOM
- 5 OFFICES
- SMALL BULLPEN
- RESTROOM
- STORAGE

### SUITE 102A | ±656 SF

**\$20.00 PSF/YR Full Service (Net of Janitorial)**

- RECEPTION
- 2 OFFICES
- 1 RESTROOM

### SUITE 104/105 | ±2,873 SF

**\$18.50 PSF/YR Modified Gross**

- 2 RECEPTIONS/WAITING ROOMS
- BREAK ROOM
- 6 OFFICES
- BULLPEN/CONFERENCE ROOMS
- 2 RESTROOMS
- STORAGE

**SUITE 104/105 is divisible down to ±1,254 SF or ±1,619 SF**



The information contained herein has been obtained from various sources. We have no reason to doubt its accuracy; however, J & J Commercial Properties, Inc. has not verified such information and makes no guarantee, warranty or representation about such information. The prospective buyer or lessee should independently verify all dimensions, specifications, floor plans, and all information prior to the lease or purchase of the property. All offerings are subject to prior sale, lease, or withdrawal from the market without prior notice. Effective 05 20 26



**COMMERCIAL PROPERTIES INC.**

Locally Owned. Globally Connected. CRIFAC INTERNATIONAL

TEMPE: 2323 W University Drive, Tempe, AZ 85281 | 480.966.2301  
SCOTTSDALE: 8767 E Via de Commercio, Suite 101, Scottsdale, AZ 85258 | www.cpi.az.com

**JOHN HART**

D 480.966.4373

M 602.526.9499

jhart@cpi.az.com

**MATT ZACCARDI**

D 480.966.7625

M 602.561.1339

mzaccardi@cpi.az.com

**KATY HAUG**

D 480.623.2328

M 816.808.7347

khaug@cpi.az.com

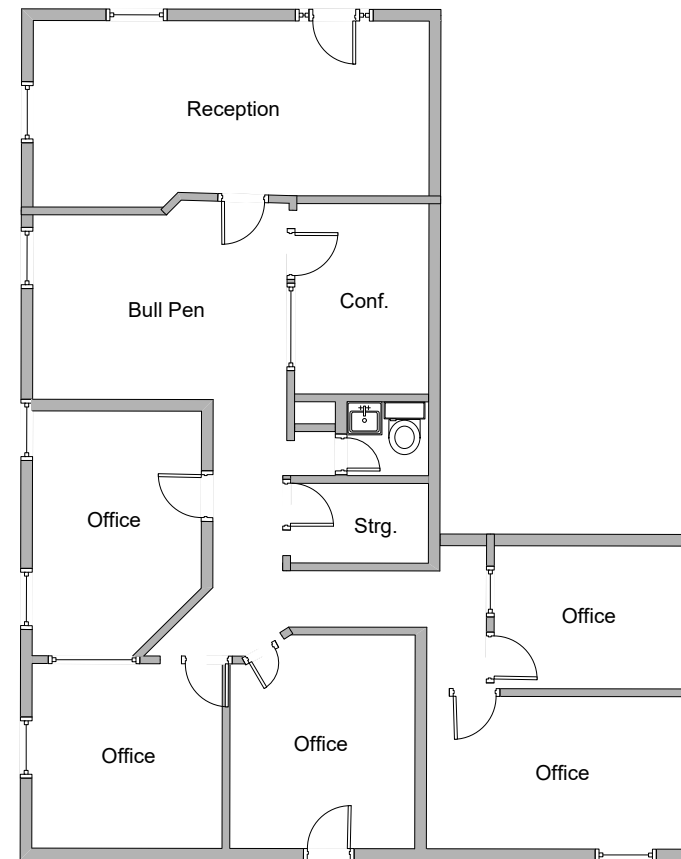
## EAST BASELINE PROFESSIONAL PLAZA

Ideally located in the Lakeshore/Baseline Office Corridor.  
Close proximity to US 60 and Sky Harbor International Airport.

**SUITE 101 | ±1,646 SF**

**\$18.50 PSF/YR Modified Gross**

- RECEPTION
- CONFERENCE ROOM
- 5 OFFICES
- SMALL BULLPEN
- RESTROOM
- STORAGE



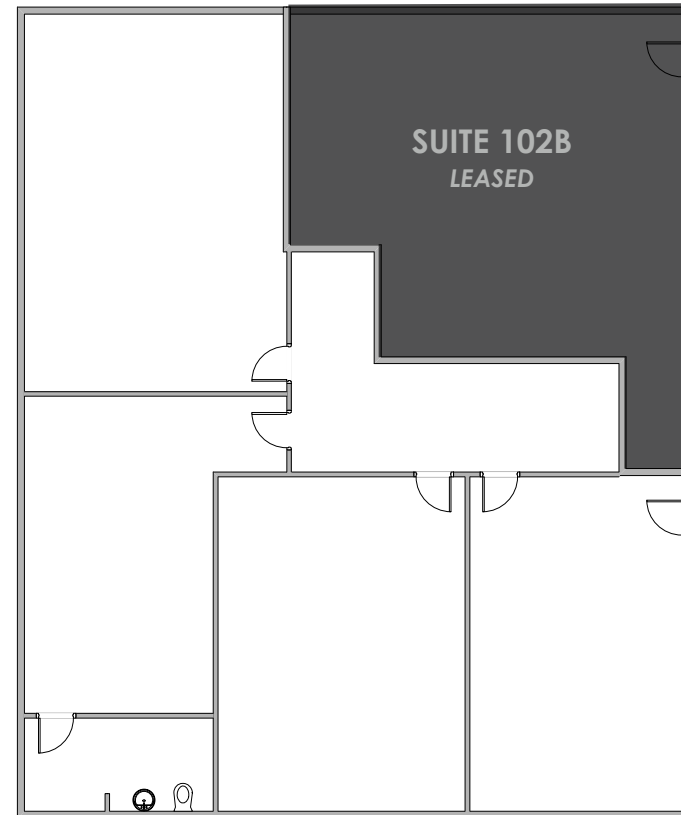
## EAST BASELINE PROFESSIONAL PLAZA

Ideally located in the Lakeshore/Baseline Office Corridor.  
Close proximity to US 60 and Sky Harbor International Airport.

**SUITE 102A** | ±656 SF

**\$20.00 PSF/YR Full Service (Net of Janitorial)**

- RECEPTION
- RESTROOM
- 2 OFFICES



## EAST BASELINE PROFESSIONAL PLAZA

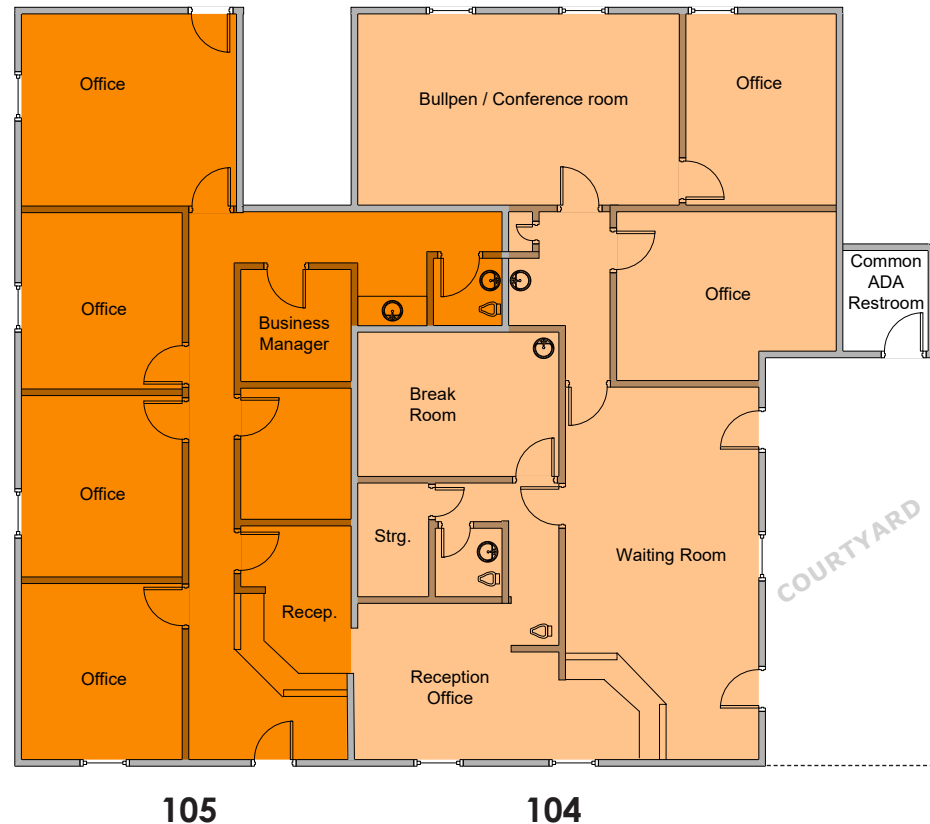
Ideally located in the Lakeshore/Baseline Office Corridor.  
Close proximity to US 60 and Sky Harbor International Airport.

**SUITE 104/105 | ±2,873 SF**

**\$18.50 PSF/YR Modified Gross**

- 2 RECEPTIONS/WAITING ROOMS
- BREAK ROOM
- 6 OFFICES
- BULLPEN/CONFERENCE ROOMS
- 2 RESTROOMS
- STORAGE

**SUITE 104/105 is divisible down to ±1,254 SF or ±1,619 SF**



## SUITE 105 PHOTOS



JOHN HART  
D 480.966.4373  
M 602.526.9499  
jhart@cpiaz.com

MATT ZACCARDI  
D 480.966.7625  
M 602.561.1339  
mzaccardi@cpiaz.com

KATY HAUG  
D 480.623.2328  
M 816.808.7347  
khaug@cpiaz.com

The information contained herein has been obtained from various sources. We have no reason to doubt its accuracy; however, J & J Commercial Properties, Inc. has not verified such information and makes no guarantee, warranty or representation about such information. The prospective buyer or lessee should independently verify all dimensions, specifications, floor plans, and all information prior to the lease or purchase of the property. All offerings are subject to prior sale, lease, or withdrawal from the market without prior notice. Effective 05/20/26

# OFFICE BUILDING FOR LEASE

## EAST BASELINE PROFESSIONAL PLAZA



JOHN HART  
D 480.966.4373  
M 602.526.9499  
jhart@cpiaz.com

MATT ZACCARDI  
D 480.966.7625  
M 602.561.1339  
mzaccardi@cpiaz.com

KATY HAUG  
D 480.623.2328  
M 816.808.7347  
khaug@cpiaz.com

The information contained herein has been obtained from various sources. We have no reason to doubt its accuracy; however, J & J Commercial Properties, Inc. has not verified such information and makes no guarantee, warranty or representation about such information. The prospective buyer or lessee should independently verify all dimensions, specifications, floor plans, and all information prior to the lease or purchase of the property. All offerings are subject to prior sale, lease, or withdrawal from the market without prior notice. Effective 05/20/26