

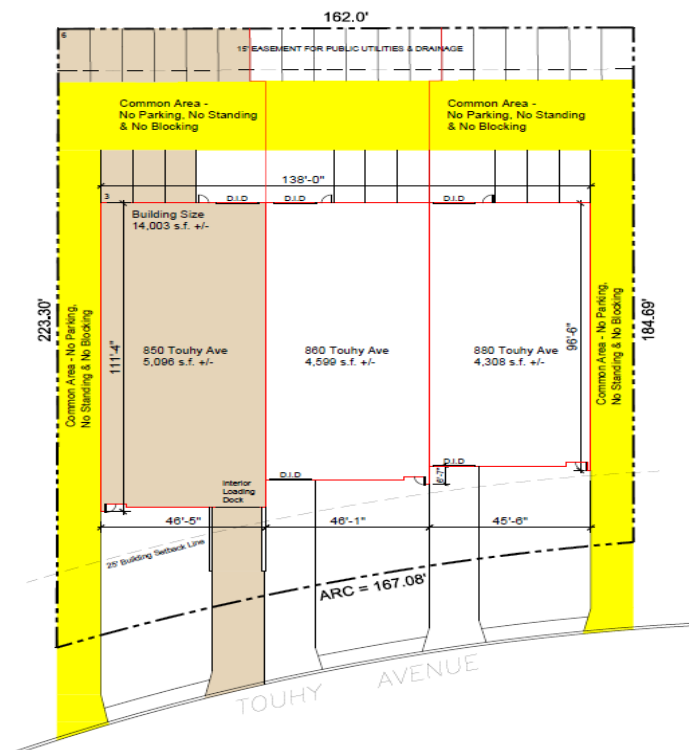


Building a better image

Building Highlights

- 32,401 S.F. gross +/- Land
- 14,003 S.F. gross +/- Building
- 5,096 S.F. gross +/- Available Unit
- 14' 6" Clear +/-
- 9 Car Stalls +/-
- 1 Dock
- 1 Drive-In Door
- Gas Unit Heaters, Air Conditioned Office
- I-1 Industrial
- Rental Rate: Subject to Offer
- CAM: Lessee Responsibility
- 5 Year Lease Minimum

Ideal for Sales Office, Showroom, and Warehouse



For more information contact: Giovanni Gullo or Mariann Gullo | Phone: 847.364.7000 | Email: info@gullo.com
Gullo International | Development Corporation | Realty Group • 1100 Landmeier Road • Elk Grove Village, IL 60007
LinkedIn: www.linkedin.com/company/gullo-international-development-corporation
Website: www.gullo.com