

APN 19110801019
 1150 E LARSON LN
 Corrected 4/10/23
 by DAD2

UNIT SQUARE FOOTAGE

	LEVEL 1	MEZZANINE	TOTAL	# OF UNITS
	3,430 SF	548.5 SF	3,978.5 SF	1
	3,407 SF	548.5 SF	3,955.5 SF	5
	1,703 SF	668.5 SF	2,372.5 SF	2
	3,216 SF	682 SF	3,898 SF	1
	2,531 SF	1,394 SF	3,925 SF	7
	2,518 SF	1,394 SF	3,912 SF	10
	1,259 SF	590 SF	1,849 SF	2
	2,345 SF	1,221 SF	3,566 SF	1
	2,202.5 SF	1,307.5 SF	3,510 SF	1
TOTAL GROSS SF				109,768 SF

SITE DATA

PROJECT LOCATION

E. LARSON LANE / ROME ST.
 HENDERSON, NV 89044

ASSESSOR'S PARCEL NUMBER: 19110-00-1019

JURISDICTION: CITY OF HENDERSON

ZONING: LIMITED INDUSTRY (LI)

SETBACKS:

	FRONT	REAR	SIDE, INTERIOR	SIDE, CORNER
REQUIRED	25'	6'	25'	20'
PROVIDED	37'-7 1/2"	6'	25'	31'-6"

BUILDING AND LOT SIZE:

GROSS BUILDING FOOTPRINT S.F. =
 NORTH BUILDING 29,318.25
 SOUTH WEST BUILDING 35,312.75
 SOUTH EAST BUILDING 12,458
 TOTAL 77,089 S.F.

ESTIMATED LOT SIZE = 5 ACRES OR 217,800 S.F.
 LOT COVERAGE = 35% (MAX ALLOWABLE: 50%)

PARKING ANALYSIS:

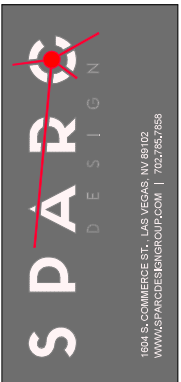
REQUIRED PARKING = 5 SPACES
 PROVIDED PARKING = 8 SPACES
 REQUIRED ACCESSIBLE PARKING SPACES = 1
 PROVIDED ACCESSIBLE PARKING SPACES = 2

KEYNOTES

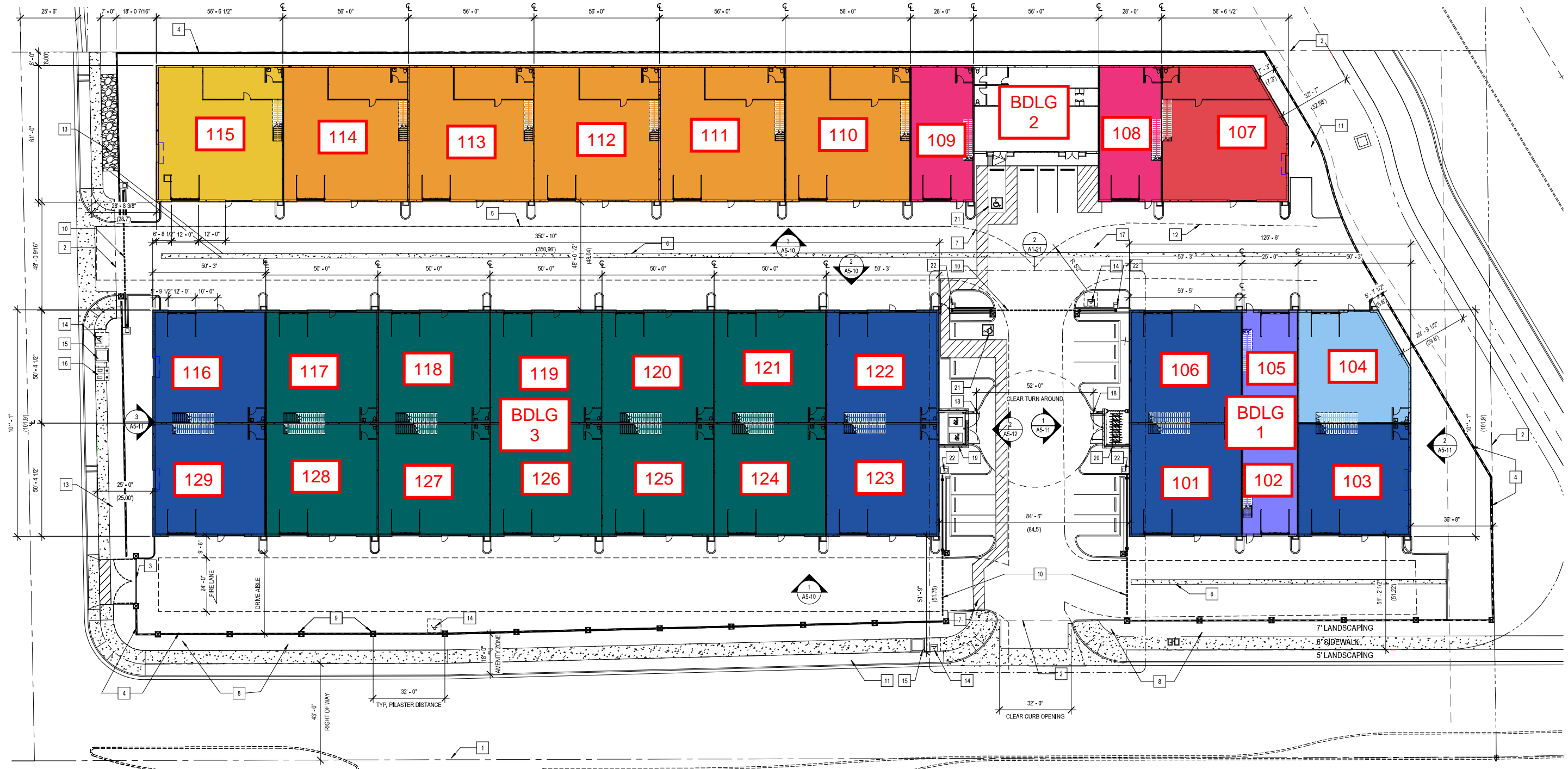
- CENTERLINE OF STREET
- PROPERTY LINE
- FIRE ACCESS CRASH GATE
- DECORATIVE CMU WALL
- OUTLINE OF FIRE ACCESS LANE 24'-0" WIDTH
- CONCRETE VALLEY GUTTER
- ACCESSIBLE ROUTE
- LANDSCAPED AREA
- DECORATIVE CMU PILASTER
- MOTORIZED SLIDING VEHICULAR GATE
- CONCRETE SIDEWALK
- 24' 0" FIRE ACCESS LANE
- RIP RAP CHANNEL
- FIRE HYDRANT (SEE CIVIL PLANS FOR MORE DETAILS)
- RPDA (SEE CIVIL PLANS FOR MORE DETAILS)
- RPPA (SEE CIVIL PLANS FOR MORE DETAILS)
- STAINED CONCRETE FROM ENTRY TO CLUBHOUSE, SAWCUTS FOR COLORED DRIVEWAY SQUARES @ 20' O.C. EACH WAY
- SMILING GATE
- TRASH ENCLOSURE
- BICYCLE STORAGE
- ADA PARKING STALL
- GATE OPERATOR

SHEET NOTES

- FOR BIKE STORAGE SEE TRASH ENCLOSURE AS SIMILAR.
- SEE CIVIL DRAWINGS FOR SPECIFIC GRADES, ETC.
- DIMENSIONS OF DOOR LOCATIONS ARE TYPICAL OF SIMILAR UNIT TYPES UNLESS NOTED OTHERWISE.



1650 S. COMMERCE ST., LAS VEGAS, NV 89103
 WWW.SPAPDESIGN.COM | 702.262.8569



PROJECT INFORMATION
 PROJECT NAME: STACK AUTO LOFTS GARAGE CONDO
 PROJECT ADDRESS: E. LARSON LANE / ROME ST., HENDERSON, NV 89044
 ISSUE DATE AND TIME: 06/03/21
 PROJECT NUMBER: 20111002

DATE: 2/21/2023 9:14:43 AM

THE STACK AT INSPIRADA
 E. LARSON LANE / ROME ST.
 HENDERSON, NV 89044

DATE: 2/21/2023 9:14:43 AM
 SHEET TITLE: SITE PLAN
 SHEET NUMBER: A1-20

SITE PLAN
 SCALE: 3/64" = 1'-0"