

Prime Target Pad Site Available

21500 NE Halsey St, Fairview, OR 97024



SURROUNDING RETAILERS



BROCK SWITZER
brock@hsmacific.com



503-245-1400
4260 Galewood St. Suite B, Lake Oswego, OR 97035 | www.hsmacific.com

- Call for economics
- Excellent pad in front of Target
- Close proximity to Fairview Pkwy and I-84
- High traffic location
- Dense residential in vicinity
- Located near Wood Village Town Center

AVAILABLE SPACE:

+/- 21,730 SF Pad &
+/- 5,028 SF Building



FOR MORE INFORMATION, CONTACT:

BROCK SWITZER

brock@hsmacific.com

A MEMBER OF
CHAINLINKS
RETAIL ADVISORS



4260 Galewood St. Suite B, Lake Oswego, OR 97035
www.hsmacific.com

DEMOGRAPHICS



- 1 MILE - 14,916
- 3 MILE - 106,714
- 5 MILE - 236,863



- 1 MILE - 4,267
- 3 MILE - 41,239
- 5 MILE - 73,791



- 1 MILE - \$102,164
- 3 MILE - \$90,673
- 5 MILE - \$106,431



FOR MORE INFORMATION, CONTACT:

BROCK SWITZER

brock@hsmPacific.com

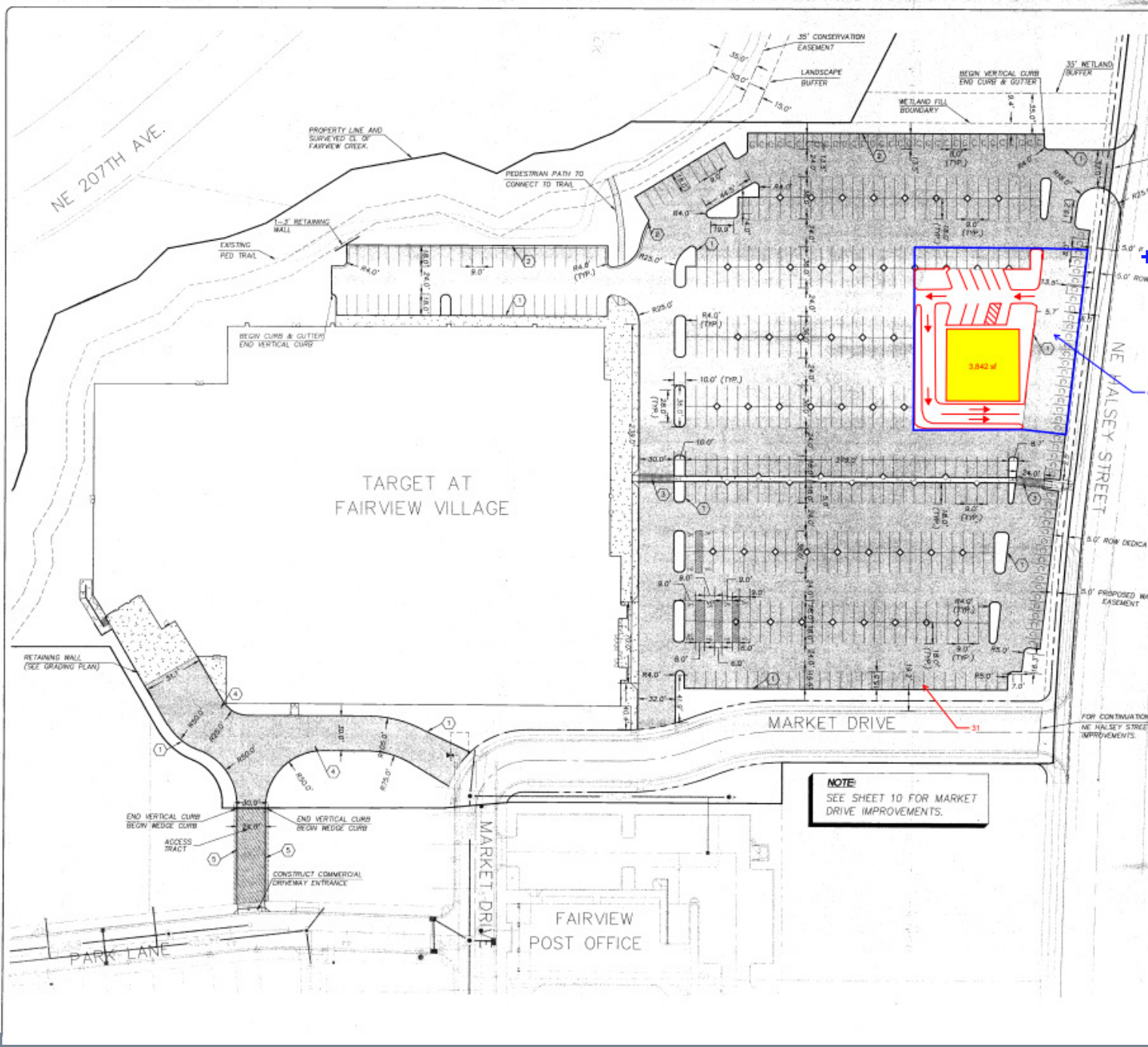
A MEMBER OF
CHAINLINKS
RETAIL ADVISORS



4260 Galewood St. Suite B, Lake Oswego, OR 97035

503-245-1400

www.hsmPacific.com

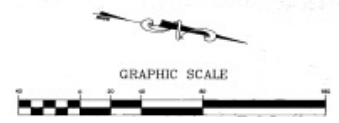


+/- 21,730 sf

42 Parking Stalls

NOTE
 SEE SHEET 10 FOR MARKET DRIVE IMPROVEMENTS.

LEGEND	
A.C. PAVING	
HEAVY DUTY ASPHALT PAVING	
CONCRETE	



NO.	DATE	REVISION	BY

DESIGNED BY	J.M.	DATE	1/17/16
DRAWN BY	E.L.	DATE	1/17/16
REVIEWED BY	J.M.	DATE	1/17/16
PROJECT NO.	09-036	REF.	09-035
SCALE	AS SHOWN	DATE	1/17/16
SCALE	AS SHOWN	DATE	1/17/16
SCALE	AS SHOWN	DATE	1/17/16



SITE PLAN
 TARGET AT FAIRVIEW VILLAGE

SHEET **3** of **13**

FOR MORE INFORMATION, CONTACT:

BROCK SWITZER

brock@hspacific.com

A MEMBER OF
CHAINLINKS
 RETAIL ADVISORS



4260 Galewood St. Suite B, Lake Oswego, OR 97035
 503-245-1400
 www.hspacific.com