

For Sale

Unit 118 - 408 East Kent Avenue South

Vancouver, BC

PRICE REDUCED

2,018 sq. ft. Industrial
Strata Unit at Foreshore
Business Park



Contact

Darren Starek

Senior Vice President
Industrial Properties
darren.starek@cbre.com
+1 604 662 5175

Ed Ferreira

Personal Real Estate Corporation
Senior Vice President
ed.ferreira@cbre.com
+1 604 662 5122

Jordan Coulter

Associate Vice President
Industrial Properties
jordan.coulter@cbre.com
+1 604 662 5574

CBRE

Property Details

Legal Description

Strata Lot 18, District Lot 313, Group 1 New Westminster District, Strata Plan BCS1764 PID 026-617-790

Strata Fees

\$336.55 /month

Property Taxes

\$14,407.70 (2025)

Year Built

2006

Zoning

M-2 (Industrial)

Unit Size

Main Floor	1,358 sq.ft.
Second Floor	600 sq.ft.
Total (approx)	2,018 sq.ft.



Price

~~\$1,379,000~~

\$1,298,000

Property Features

- + 1 grade loading door
- + 19'6" clear warehouse ceiling height
- + 3-phase electrical service
- + Clear span warehouse with windows & skylight providing ample natural light
- + Nicely improved office areas on Main & Second Floors
- + Separate entrance to Main Floor & Second Floor office
- + Second Floor office features skylight & air conditioning
- + 2 two-piece washrooms (1 on each floor)
- + 3 designated parking stalls



Main Floor Showroom/Office

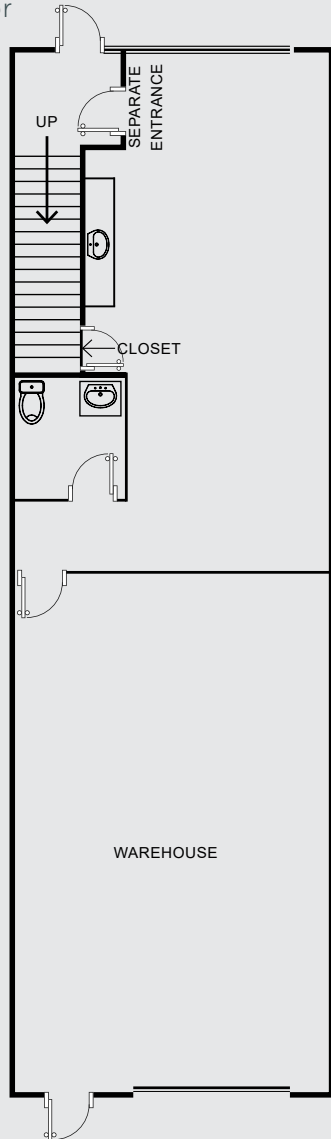


Warehouse

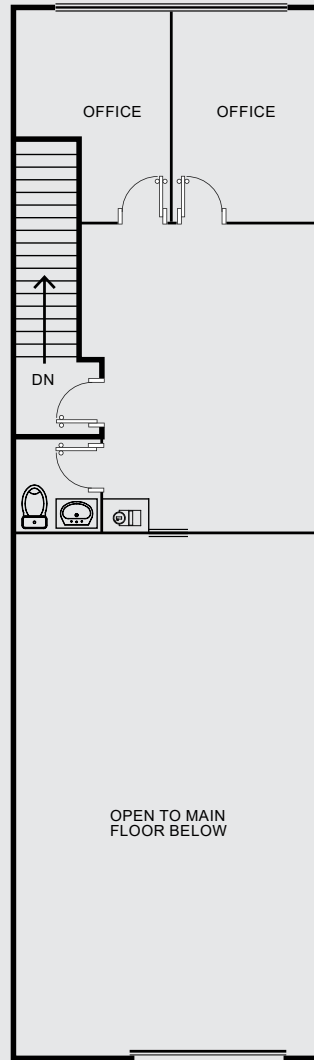
Floorplans



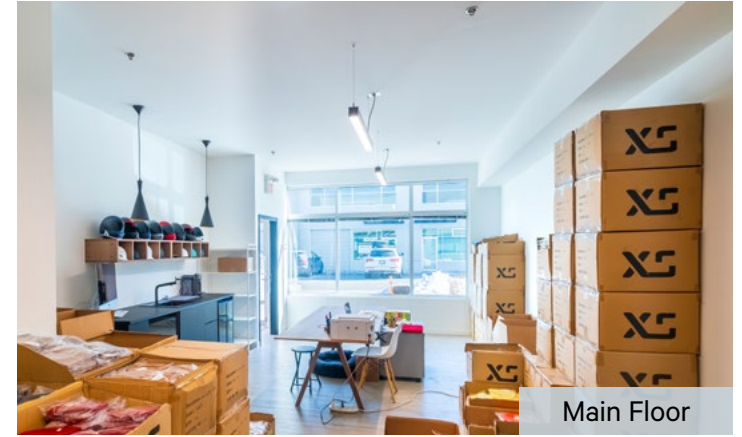
Main Floor



Second Floor



*Floorplans may not be exact and is subject to change



Main Floor



Second Floor



Warehouse

Industrial | For Sale

Unit 118 - 408 E Kent Avenue S | Vancouver, BC



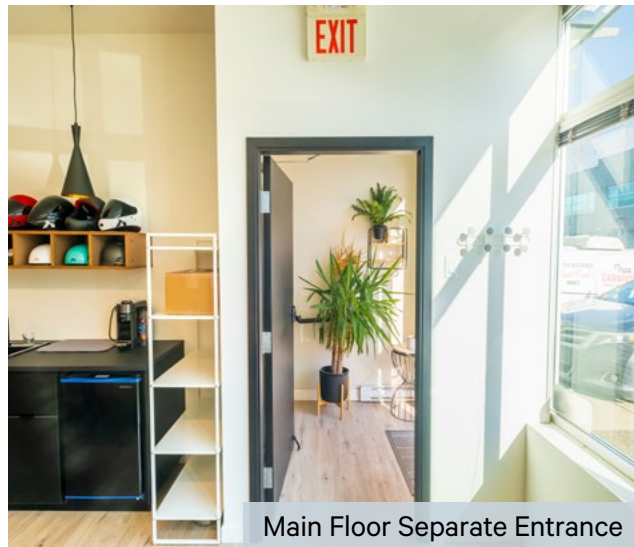
Warehouse



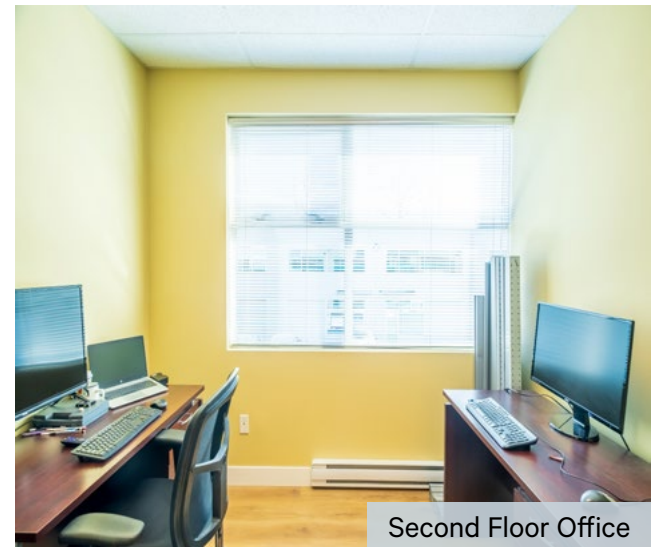
Loading



Warehouse



Main Floor Separate Entrance



Second Floor Office



Drive Times

5 MINS to Highway 99
5 MINS to Knight St Bridge

10 MINS to YVR Airport
20 MINS to Downtown Vancouver

30 MINS to DeltaPort
40 MINS to US Border

The Location

Located in *Foreshore Business Park*, the Property is situated between Main Street and Fraser Street, with direct frontage on the Fraser River. It offers easy access to SE Marine Drive, Oak Street, and Knight Street, providing convenient access to Downtown Vancouver as well as the rest of Metro Vancouver via Highway 99 and Highway 91, making it convenient for trucking and transportation. Additionally, the property is near YVR airport. Businesses in the area have chosen this location to take advantage of the excellent transportation options available to employees, as well as nearby amenities such as restaurants, retail and other services South Vancouver has to offer, including Marine Gateway, the 26 SW Marine Drive Commercial development, and the proposed Marine Gateway 2 mixed-use project.



Contact

Darren Starek

Senior Vice President | Industrial Properties
darren.starek@cbre.com | +1 604 662 5175

Ed Ferreira

Personal Real Estate Corporation
Senior Vice President | Industrial Properties
ed.ferreira@cbre.com | +1 604 662 5122

Jordan Coulter

Senior Vice President | Industrial Properties
jordan.coulter@cbre.com | +1 604 662 5574



CBRE Limited
1021 West Hastings Street #2500 | Vancouver, BC
www.cbre.ca