

# 8634 Elder Creek Road

POWER INN SUBMARKET

SACRAMENTO, CA

±4,900 SF Industrial Building



## Contact Us

**Zac Sweet** SIOR

Senior Vice President  
+1 916 717 4768  
zac.sweet@cbre.com  
Lic. 01352800

**Jeff Kvarme**

First Vice President  
+1 916 203 5257  
jeff.kvarme@cbre.com  
Lic. 01924968

**Tyler Howell**

Senior Associate  
+1 916 781 4835  
tyler.howell1@cbre.com  
Lic. 02100245

**Courtney Lee**

Associate  
+1 916 906 5544  
courtney.lee@cbre.com  
Lic. 02031694

**Stacy Ladd**

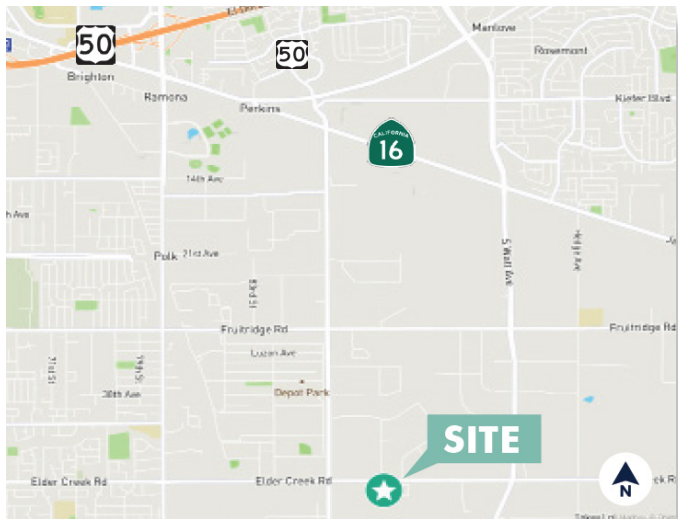
Senior Asset Manager, Buzz Oates  
T: 916 379 3847  
stacyladd@buzzoates.com  
Lic. 01214064

# PROPERTY INFORMATION

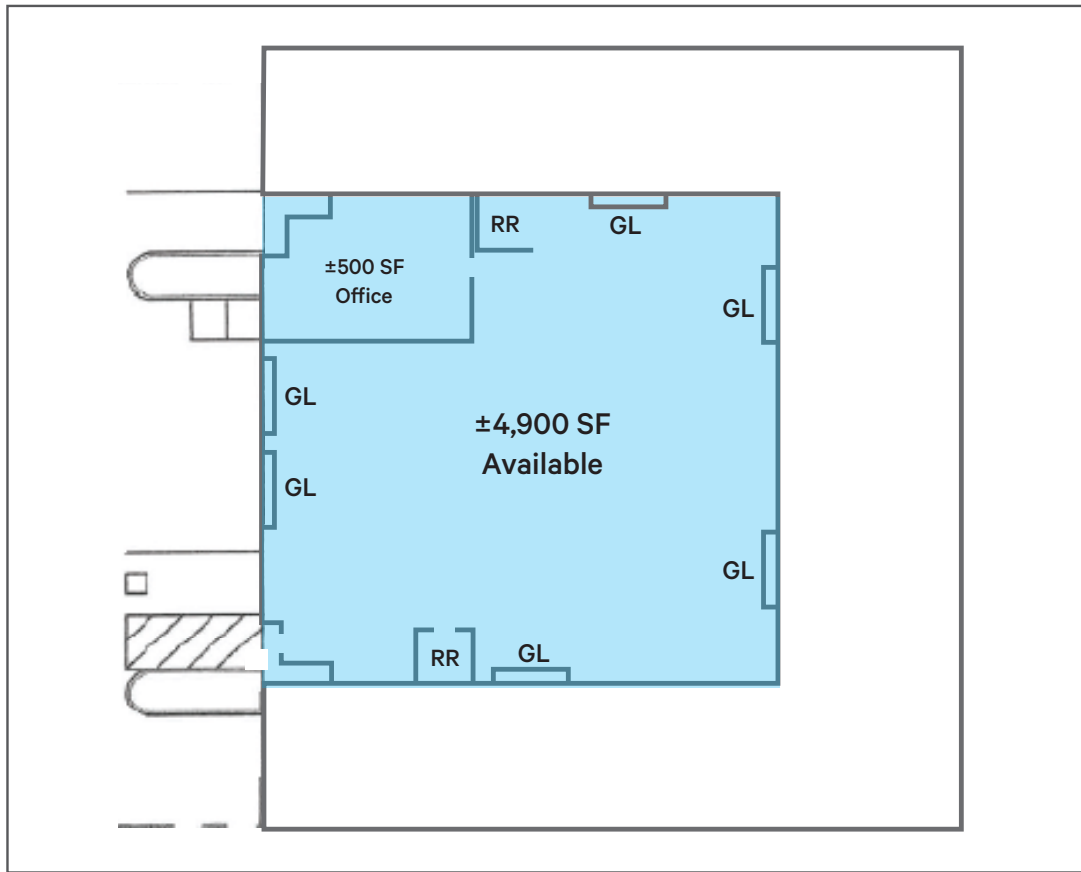
**8634 ELDER CREEK DR  
SACRAMENTO, CA 95828**

- + BUILDING AREA: ±4,900 SF
- + OFFICE AREA: ±500 SF
- + CLEAR HEIGHT: 16' - 18'
- + GRADE LEVEL DOORS: 6 - 10' X 12'
- + ZONING: M-2S HEAVY INDUSTRIAL
- + POWER: 400 AMPS, 120/208V\*

\*TENANT TO INDEPENDENTLY VERIFY PRIOR TO ENTERING BINDING AGREEMENT



# FLOOR PLAN



GL - Grade Level Door  
RR - Restroom

\*FLOOR PLAN NOT TO SCALE

## Contact Us

### Zac Sweet SIOR

Senior Vice President  
+1 916 717 4768  
zac.sweet@cbre.com  
Lic. 01352800

### Jeff Kvarme

First Vice President  
+1 916 203 5257  
jeff.kvarme@cbre.com  
Lic. 01924968

### Tyler Howell

Senior Associate  
+1 916 781 4835  
tyler.howell1@cbre.com  
Lic. 02100245

### Courtney Lee

Associate  
+1 916 906 5544  
courtney.lee@cbre.com  
Lic. 02031694

### Stacy Ladd

Senior Asset Manager, Buzz Oates  
T: 916 379 3847  
stacyladd@buzzoates.com  
Lic. 01214064