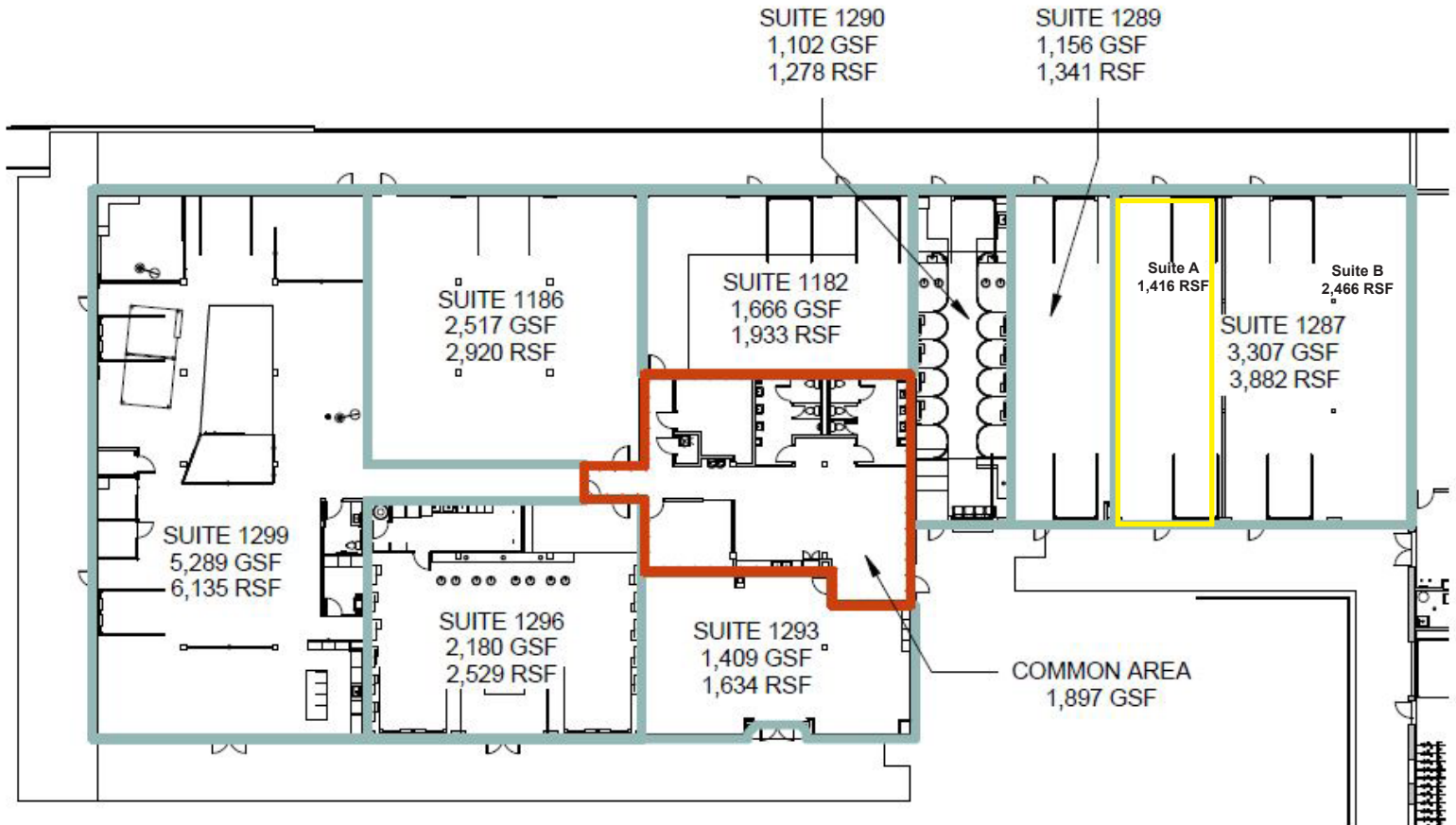




# 3857 N STEELE ST



BUILDING - 3857

1/32" = 1'-0"

**For Leasing Information, Contact:**

**ANDREW PIEGRAS**  
Vice President  
303.882.6591  
APIe gras@LPC.com

**MARK DWYER**  
Vice President  
303.877.1620  
MDwyer@LPC.com

**Lincoln**