

20600 Nordhoff Street
Chatsworth, CA 91311

FOR LEASE OR SALE
28,188 SF Industrial



TIMOTHY FOUTZ
Chairman
805 377 7087
tfoutz@naicapital.com
Cal DRE Lic # 00389515

NAI CAPITAL COMMERCIAL
15821 Ventura Blvd.
Suite #320
Encino, CA 91436
naicapital.com

NAI Capital
COMMERCIAL REAL ESTATE SERVICES, WORLDWIDE



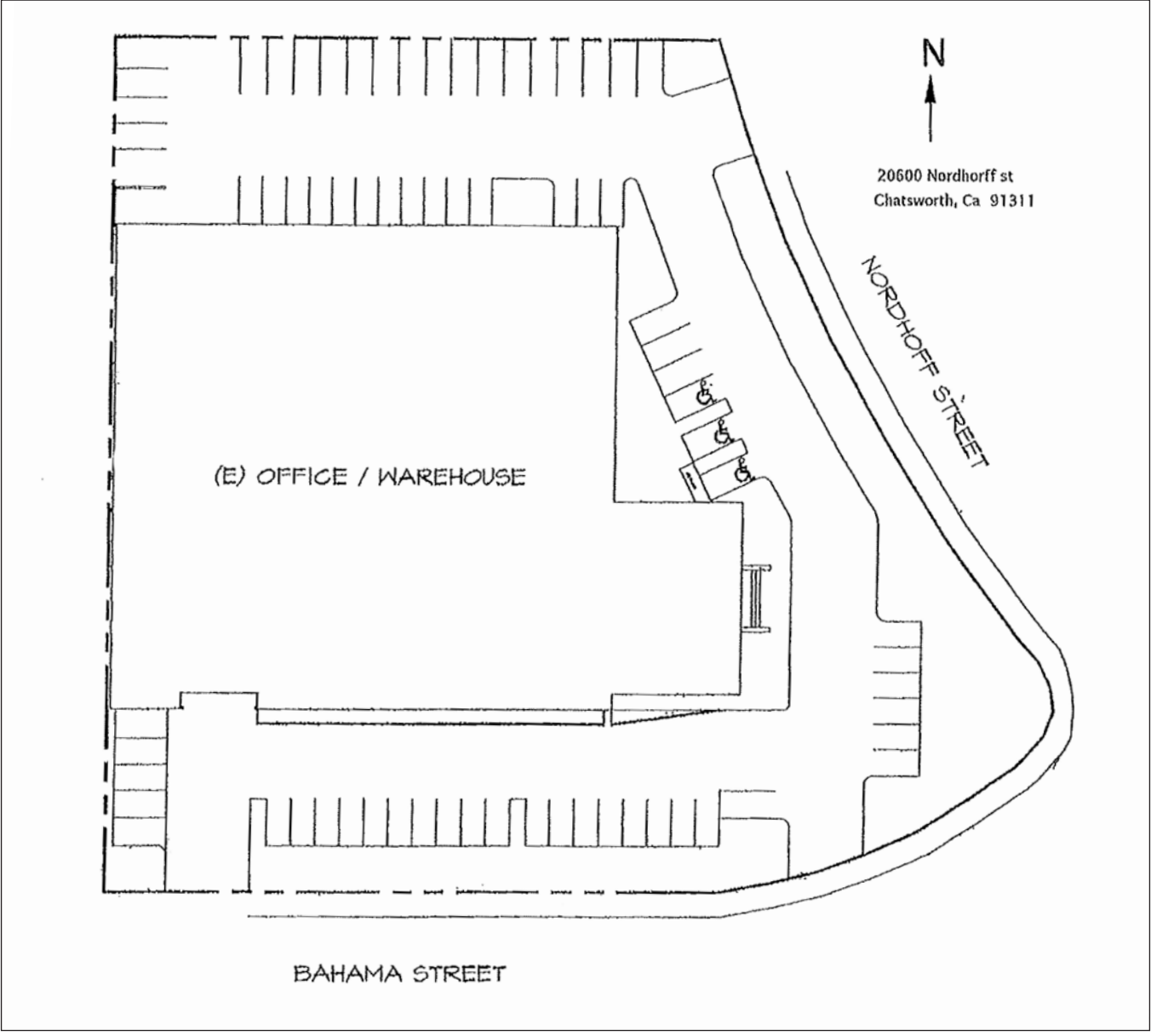
PROPERTY FEATURES

Total Building Size:	28,188 SF
Available SF:	28,188 SF
Land Area:	69,227 SF
Lease Rental:	\$31,007.00 (\$1.10 NNN PSF)
Lease Term:	Five (5) years min. preferred
Sales Price:	\$8,653,176.00 (\$307 PSF)
Possession or COE:	September (when vacant)
Electrical:	800 Amps; 240/480 Volt; 3 Phase; 4 Wire
Zoning:	MR2-1 (LA County)
Loading:	Cross Dock with (2) 12'x14' GL Doors North side & (2) Dock High positions on South side
Offices Area:	Approx. 6,500 SF with approx. 18 offices and 3 large open office areas
To Show:	Building Is Occupied Must Call Broker For Showing

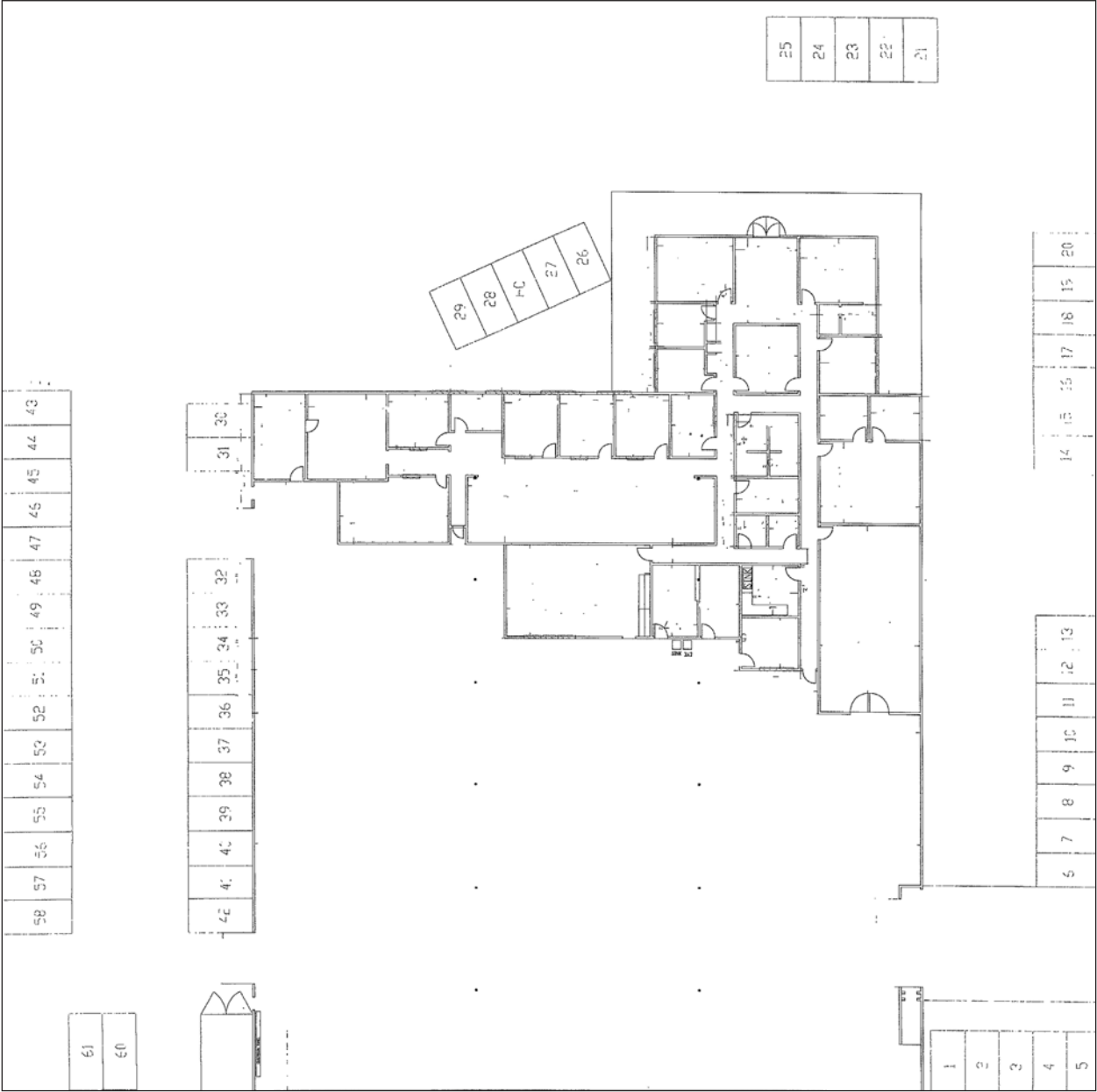
PROPERTY HIGHLIGHTS

- Major Street Identification
- Dock High And Ground Level Loading
- Minimum Clearance: 18'
- Ideal For Multiple Applications
- Sixty One (61) Car Parking On Three Sides
- Available – September 2026 - Tenant Relocating

OVERALL SITE PLAN



SITE AND OFFICE PLAN





BAHAMA ST

NORDHOFF ST





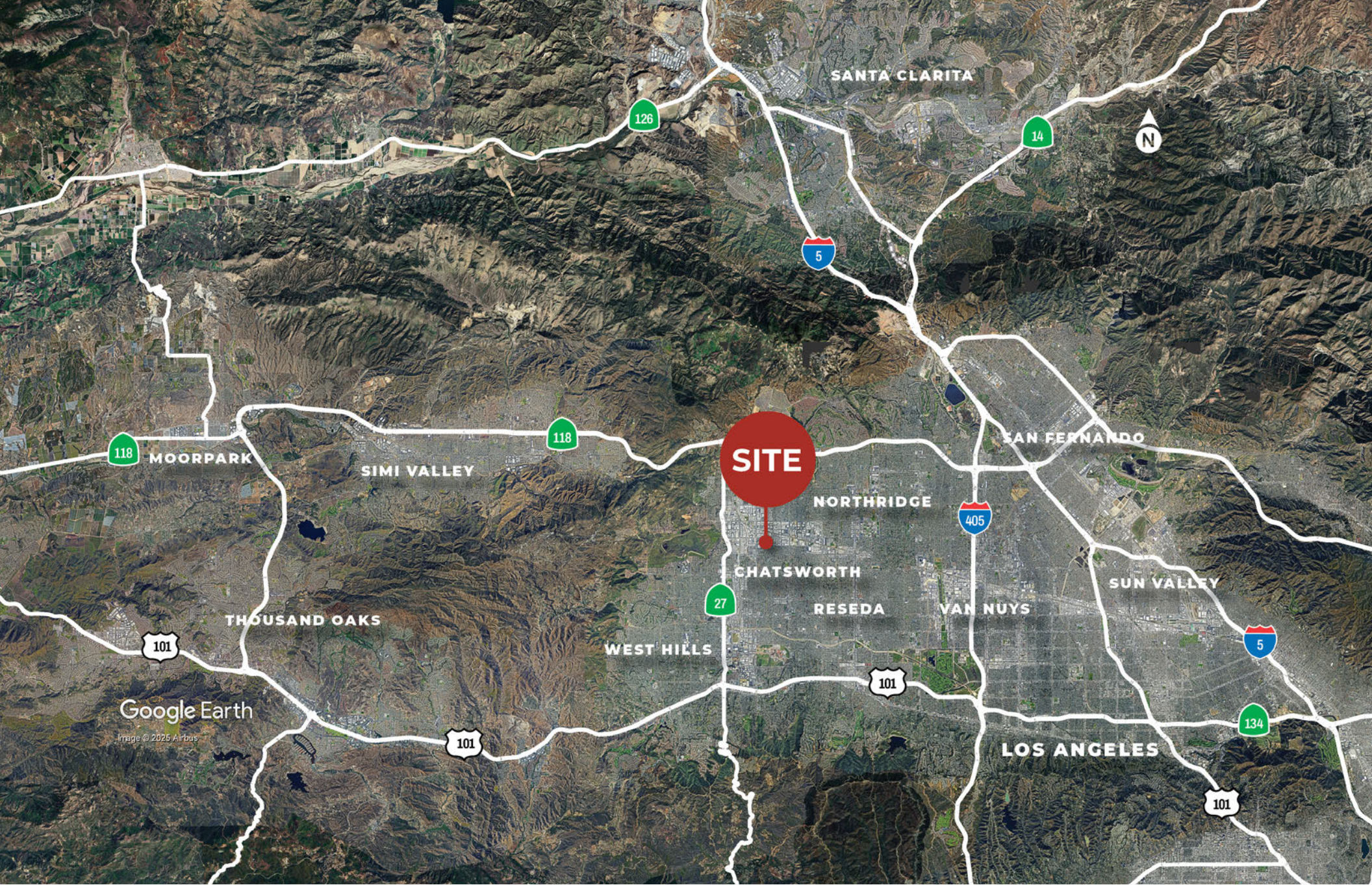
CHATSWORTH

SITE

BAHAMA ST

NORDHOFF ST

Google Earth
Image Landsat/ Copernicus
Data SIO, NOAA, U.S. Navy, NGA, GEBCO
Image © 2020 Airbus
Data IBAPI



Google Earth
Image © 2025 Airbus

©NAI Capital Commercial, Inc. Content in this document may include AI generated or alerted text, images and/or analysis. No warranty, express or implied, is made as to the accuracy of the information contained herein. This information is submitted subject to errors, omissions, change of price, rental or other conditions, withdrawal without notice, and is subject to any special listing conditions imposed by our principals. Cooperating brokers, buyers, tenants and other parties who receive this document should not rely on it, but should use it as a starting point of analysis, and should independently confirm the accuracy of the information contained herein through a due diligence review of the books, records, files and documents that constitute reliable sources of the information described herein. Unedited images viewable at naicapital.com | Cal DRE Lic #02130474