

THE BREAK

AT CARLSBAD

2270 Camino Vida Roble, Carlsbad, CA 90211

UNITS FOR SALE & LEASE
WITH PURCHASE OPTION

2270

THE
BREAK
2270

where **TRADES**
meet the **TiDE**



SAND, SURE & SPACE TO SCALE

units for sale
from **4,224 SF**

The Break at Carlsbad presents a rare opportunity to own highly functional warehouse & production space in Carlsbad, CA—San Diego's coastal hub for business, beaches, lifestyle, and innovation. Starting from 4,224 SF, these design-forward units include upgraded façades, built-out office space and unbeatable proximity to robust talent within the 78 Corridor, one of the region's most sought-after markets for technology, life sciences and manufacturing.

16'-18'

Clear Heights

NATURAL

Gas to the building

2.2/1,000

Parking

RARE

Ownership
Opportunity

- Grade-level loading with drive around access
- Warehouse and production units with built-out office space
- Recently upgraded landscaping, roof, signage, and exterior.
- Easy access to nearby neighborhoods, highways and distribution hubs

great proximity to
**CARLSBAD BEACHES,
RESTAURANTS, AND
ENTERTAINMENT**

**THE
BREAK**
AT CARLSBAD

CATCHING WAVES AND UPGRADES

recent capital
improvements
COMPLETED

updated
ASPHALT

updated
LANDSCAPING

updated
**GLASS LINE
STOREFRONTS**



updated
ROOF

updated
EXTERIOR PAINT

updated
**TRASH
ENCLOSURES**

THE
BREAK
AT CARLSBAD

SITE PLAN

UNIT E

Total: 4,741 SF
Warehouse: ±80%
Office: ±20%

UNIT F

Total: 4,726 SF
Warehouse: 89%
Office: 11%

UNIT Q

Total: 5,183 SF
Warehouse: 73%
Office: 27%

UNIT S

Total: 4,344 SF
Warehouse: 89%
Office: 11%

UNIT V

Total: 6,648 SF
Warehouse: ±80%
Office: ±20%

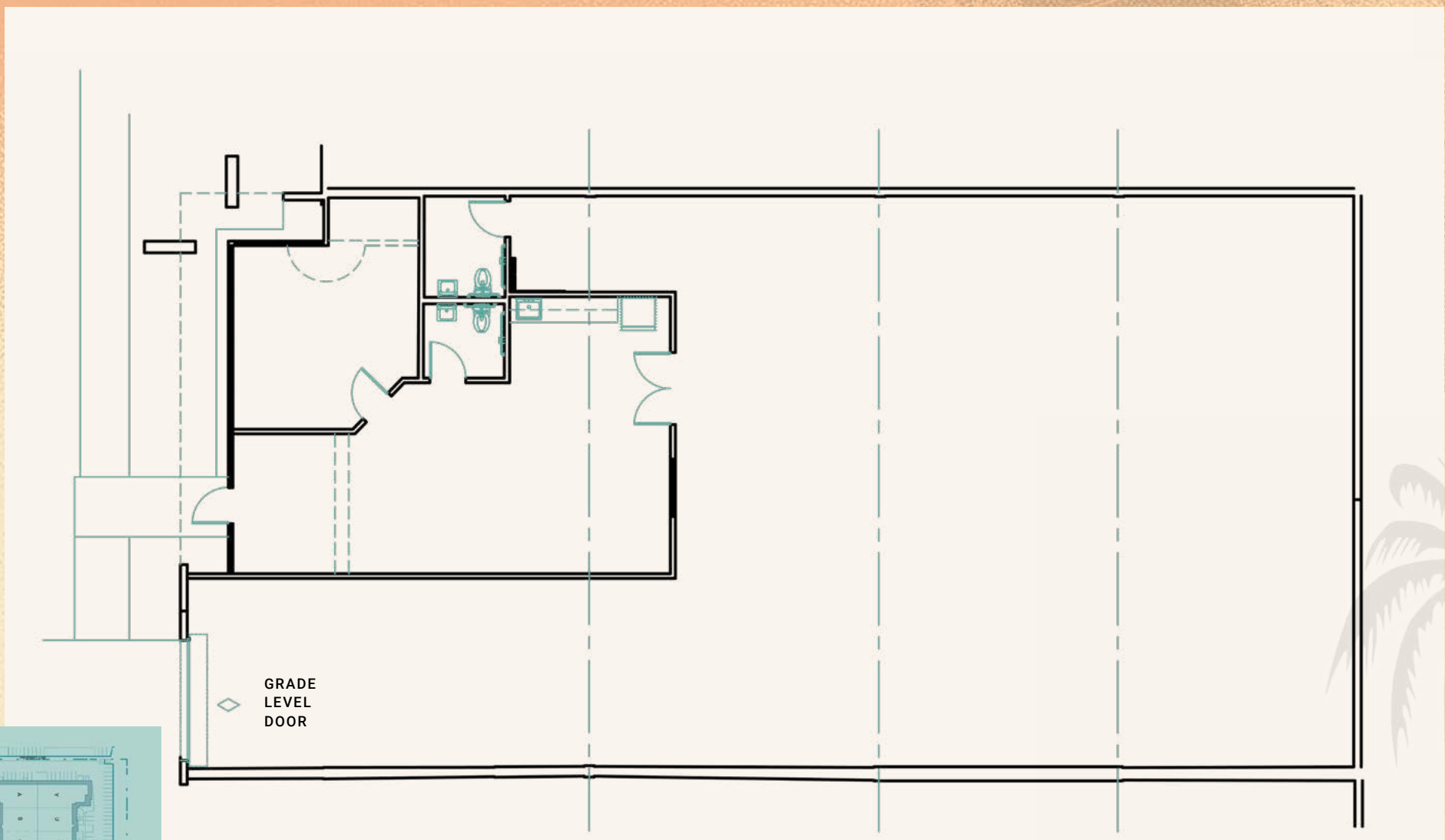
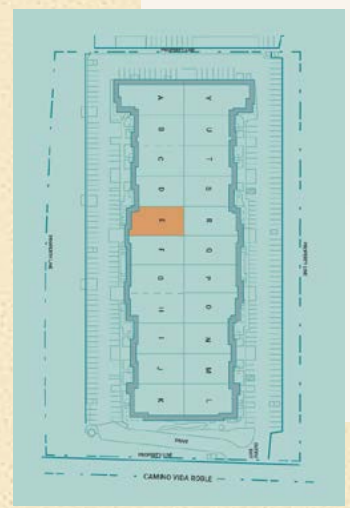
**Warehouse and office percentages are estimates.*

THE
BREAK
AT CARLSBAD



E

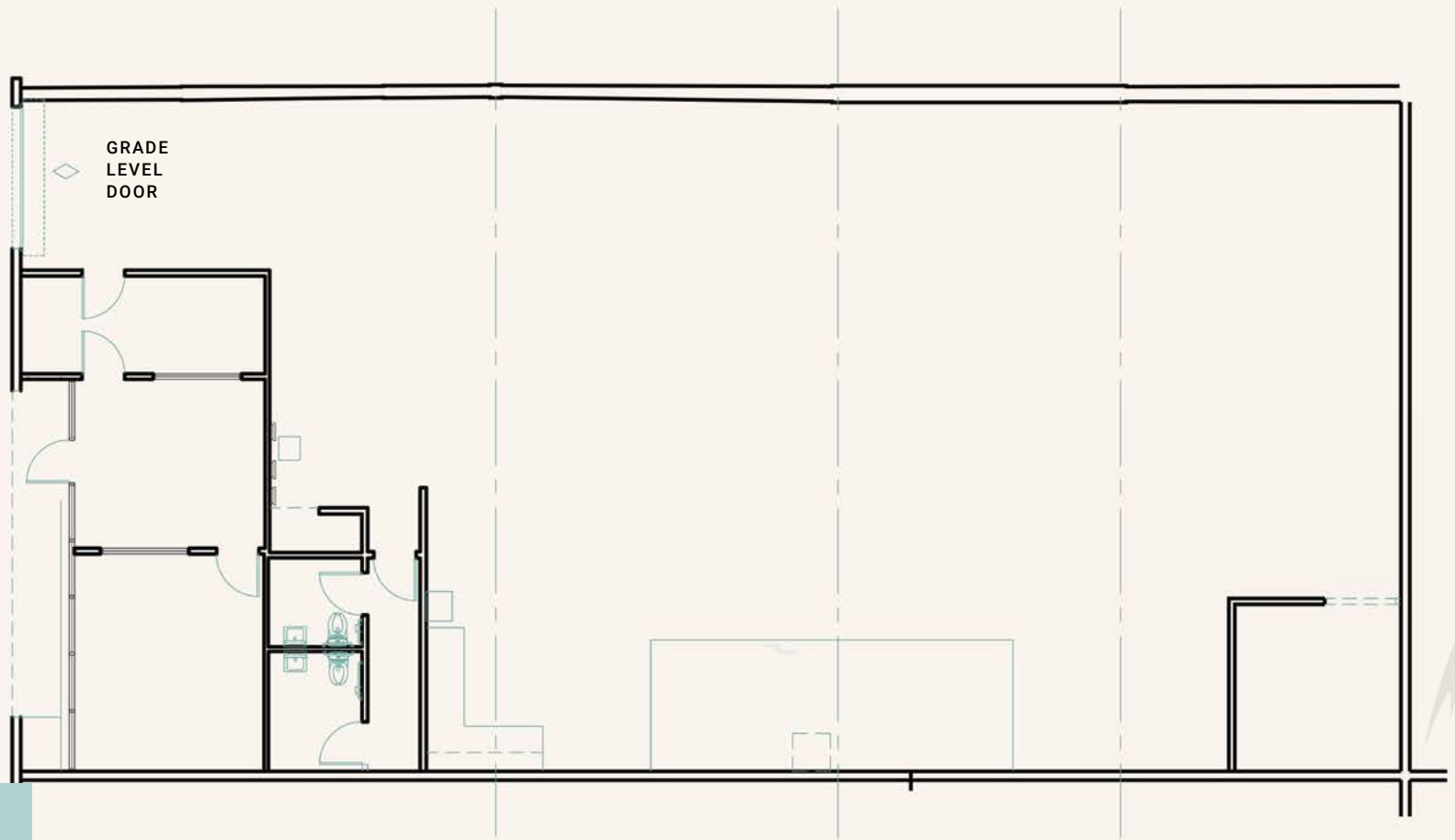
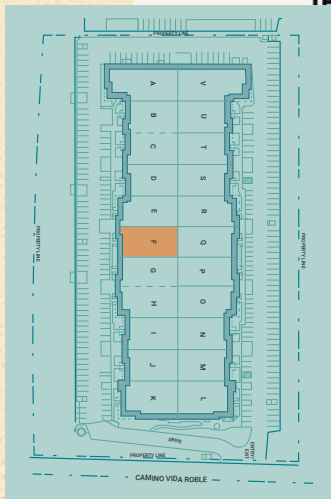
- **4,741 SF Total**
- **Turn-Key/Move in Ready**
- **Grade-level Loading**
- **2 Restrooms with Kitchenette**
- **Warehouse & Manufacturing Space**



available for sale **NOW**



- **4,726 SF Total**
- **Grade-level Loading**
- **Heavy Power with Warehouse Floor Drains**
- **Warehouse & Manufacturing Space**

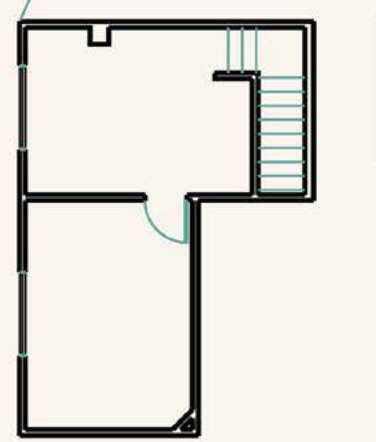
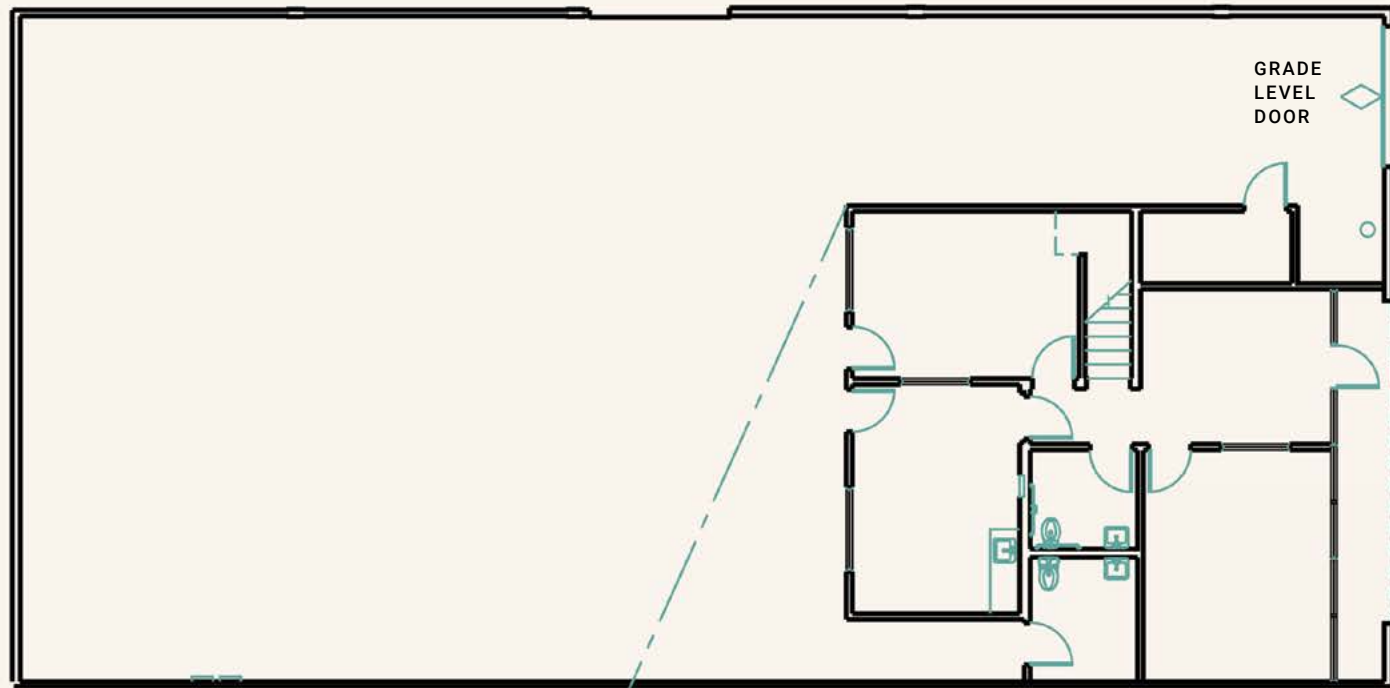
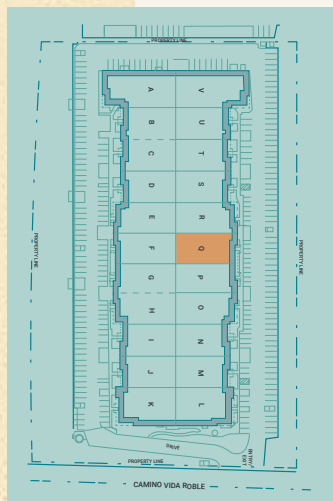


available for sale **NOW**

THE
BREAK
AT CARLSBAD

Q

- **5,183 SF Total**
- **Move-in Ready**
- **Recent Interior Turnover**
- **2 Restrooms with Kitchenette**
- **LED Lighting in Warehouse**

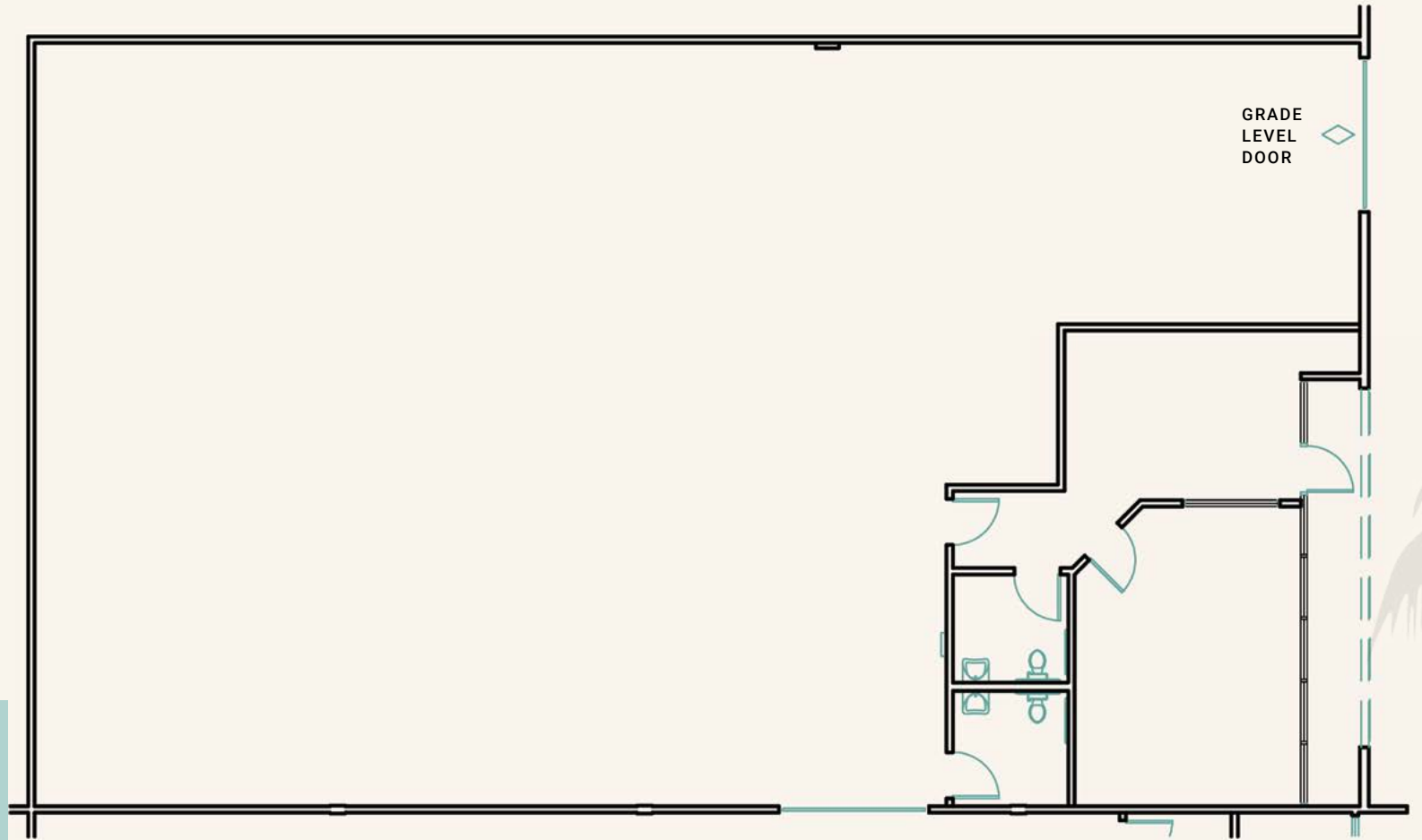
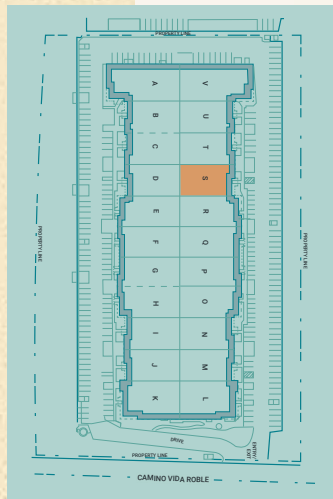


available for sale **NOW**



S

- **4,344 SF Total**
- **Grade-level Loading**
- **2 Restrooms with Kitchenette**
- **Warehouse & Manufacturing Space**

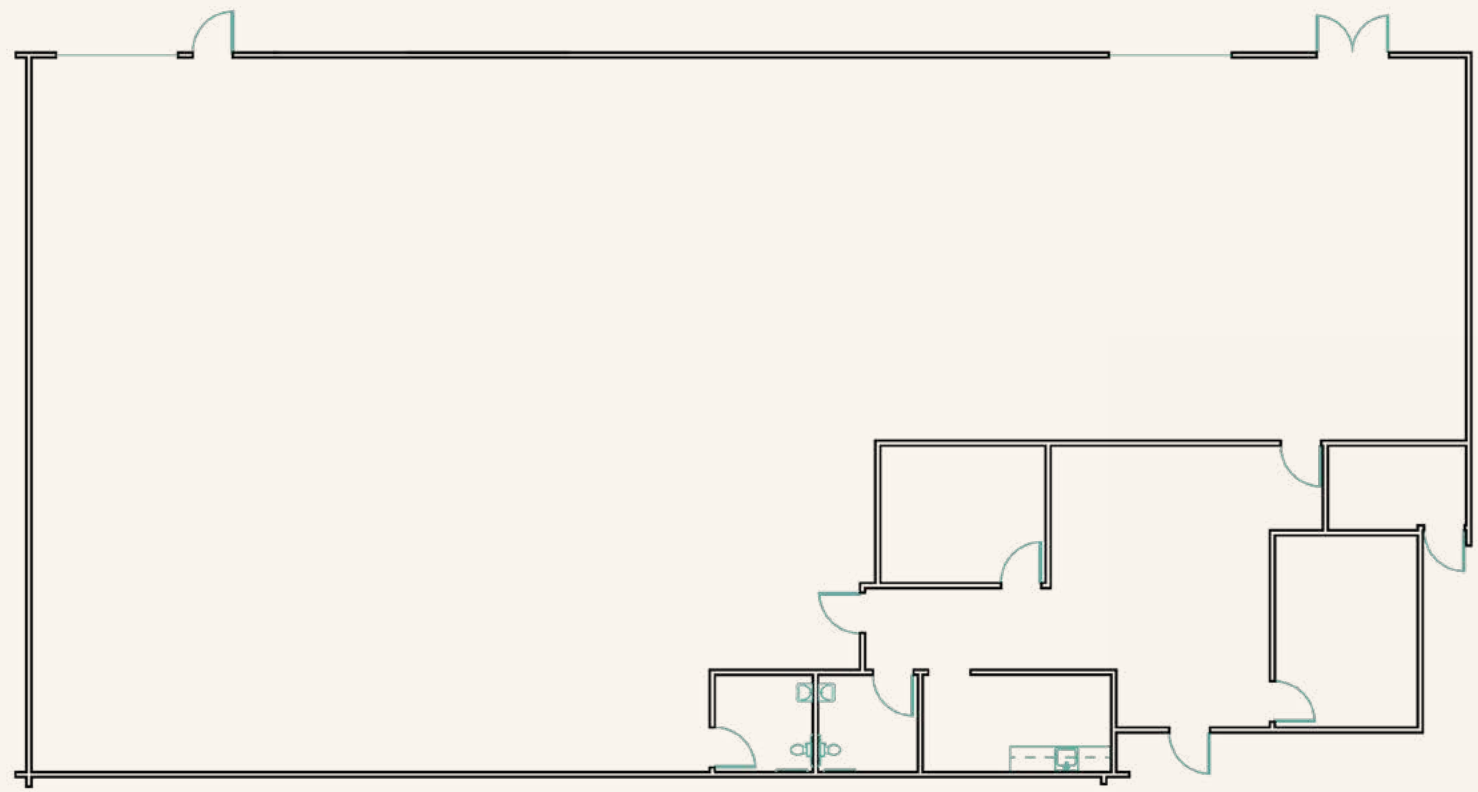
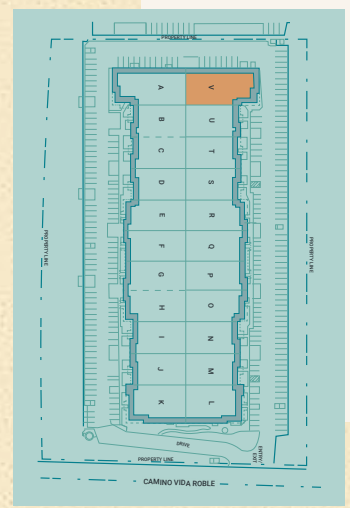


available for sale **NOW**

THE
BREAK
AT CARLSBAD



- **6,648 SF**
- **Turn-Key/
Move in Ready**
- **2 Grade-level
loading doors**
- **End cap unit**



available for sale **NOW**





WORK HARD COAST HARDER

A seaside city with seven miles of beaches and an abundance of cuisine, breweries and attractions, Carlsbad is the ultimate coastal playground. Named one of the best places to live in America by Niche in 2019, this vibrant community is a captivating destination for companies and residents alike, providing endless ways to unwind and a quality of life only the San Diego coast can offer.

- **56 Breweries**
- **19 Golf Courses**
- **22 Restaurants**
- **28 Retail Shops**
- **26.9 Minute Average Commute Time**

- Entertainment
- Fast Food
- Fitness
- Hotels
- Restaurants
- Shopping



THE
BREAK
AT CARLSBAD

WHERE PROGRESS MEETS THE PACIFIC



The Break at Carlsbad is centrally located within the Highway 78 Corridor – a progressive corner of North San Diego County that boasts some of the region’s most robust talent, cutting-edge companies and industries, including information technology, life sciences, action sports manufacturing and clean technology. From genome sequencing to advanced satellite manufacturing and robotic vehicles, this market of San Diego is one of the area’s leading hubs for groundbreaking innovations and initiatives.

5.1%
Job Growth*

39.1%
Grads with Bachelor's Degrees or Higher**

38.8
Median Age**

\$91,409
Median HHI**

3.4% Unemployment*

292,722 Total Unemployed

47.3% Grads with STEM Degrees**

16 companies in Inc's 5000 List

*Based on 2023 data ** Based on 2021 data

THE BREAK

AT CARLSBAD

For More Information, Please Contact:

CONOR BOYLE

Senior Director
+1 760 431 3856
conor.boyle@cushwake.com
CA License #01813305

JOE CROTTY

Senior Director
+1 760 473 1811
joe.crotty@cushwake.com
CA License #01369821

TYLER STEMLEY

Director
+1 760 431 3841
tyler.stemley@cushwake.com
CA License #02003867

BRANT T. ABERG, SIOR

Vice Chairman
+ 1858 546 5464
brant.aberg@cushwake.com
CA License #01773573



2270 Camino Vida Roble, Carlsbad, CA 90211



©2026 Cushman & Wakefield. All rights reserved. The information contained in this communication is strictly confidential. This information has been obtained from sources believed to be reliable but has not been verified. NO WARRANTY OR REPRESENTATION, EXPRESS OR IMPLIED, IS MADE AS TO THE CONDITION OF THE PROPERTY (OR PROPERTIES) REFERENCED HEREIN OR AS TO THE ACCURACY OR COMPLETENESS OF THE INFORMATION CONTAINED HEREIN, AND SAME IS SUBMITTED SUBJECT TO ERRORS, OMISSIONS, CHANGE OF PRICE, RENTAL OR OTHER CONDITIONS, WITHDRAWAL WITHOUT NOTICE, AND TO ANY SPECIAL LISTING CONDITIONS IMPOSED BY THE PROPERTY OWNER(S). ANY PROJECTIONS, OPINIONS OR ESTIMATES ARE SUBJECT TO UNCERTAINTY AND DO NOT SIGNIFY CURRENT OR FUTURE PROPERTY PERFORMANCE. COE-PM-West-04.17.2026