



Owned by
ARDEN | LOGISTICS
PARKS



Office/Industrial Space for Lease

Evan Molde

Associate Vice President
+1 952 897 7776
evan.molde@colliers.com

1600 Utica Avenue S Ste 300
St. Louis Park, MN 55416
P: +1 952 897 7700
colliers.com

Oakview Business Center I 1284 Corporate Center Drive, Eagan, MN

Building Amenities

- > 85,600 SF industrial building
- > Air conditioned warehouse
- > 16' clear height
- > Fully sprinklered
- > Convenient access to I-494, I-35E, Hwy 55 & Hwy 52
- > Close proximity to area shopping & dining
- > Ample tenant & visitor parking
- > Five minutes from MSP International Airport

Copyright © 2026 Colliers International. Information herein has been obtained from sources deemed reliable, however its accuracy cannot be guaranteed. The user is required to conduct their own due diligence and verification.

For Lease

Oakview Business Center I

Property Address:

1284 Corporate Center Drive | Eagan, MN

Currently Available:

Suite 200: Available 9/1/2026

26,416 SF Total

5,304 SF Office

21,112 SF Warehouse

• Three (3) dock doors

• Fully air-conditioned

• Heavy Power

Suite 400:

13,130 SF Total

4,709 SF Office

8,421 SF Air-conditioned whse

• Two (2) dock doors

Suite 200/400

39,546 SF Total

10,013 SF Office

29,533 SF Warehouse

• Five (5) dock doors

Suite 150: Available 10/1/2026

8,303 SF Total

1,953 SF Office

6,350 SF Warehouse

• Four (4) dock doors

Building Square Feet:

85,600 square feet total

Year Built:

1985

Clear Height:

16'

Lease Rates:

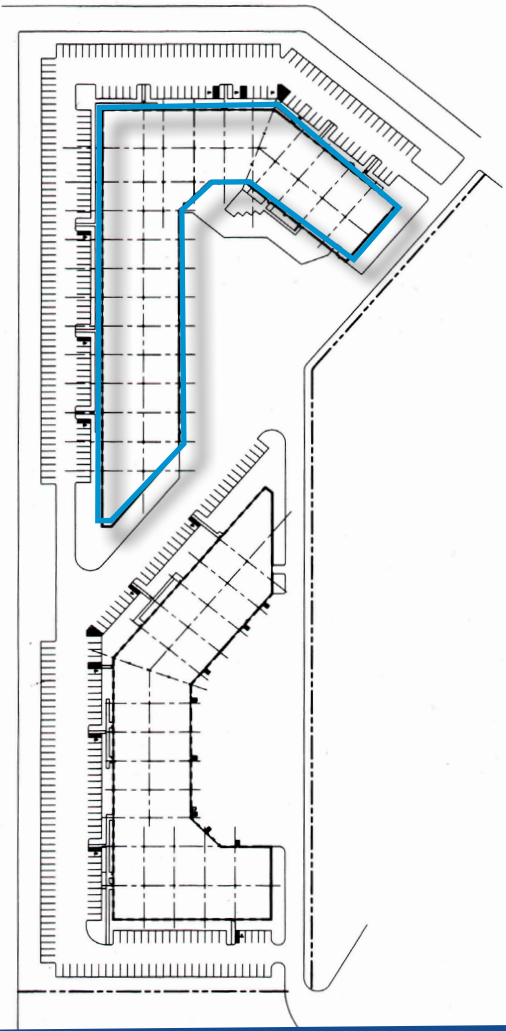
Negotiable

2026 Est CAM & RE Tax:

\$2.41 PSF CAM

\$2.22 PSF RE Taxes

\$4.63 PSF Total



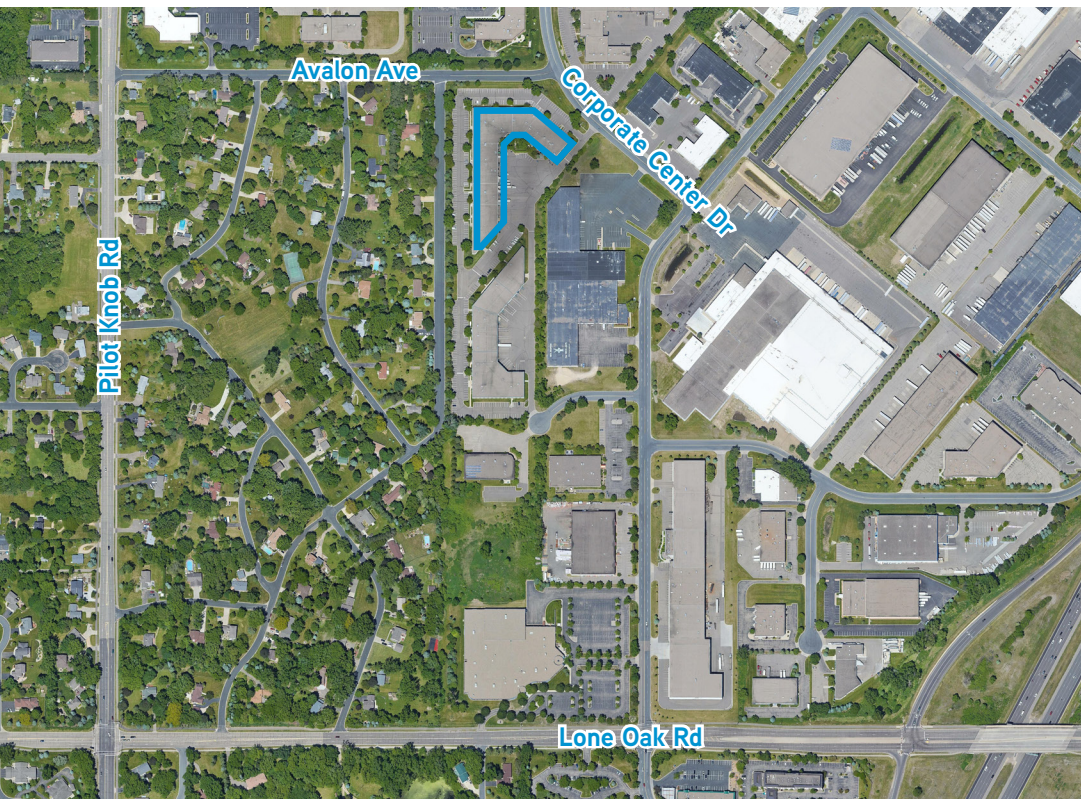
Contact:

Evan Molde

Associate Vice President

+1 952 897 7776

evan.molde@colliers.com



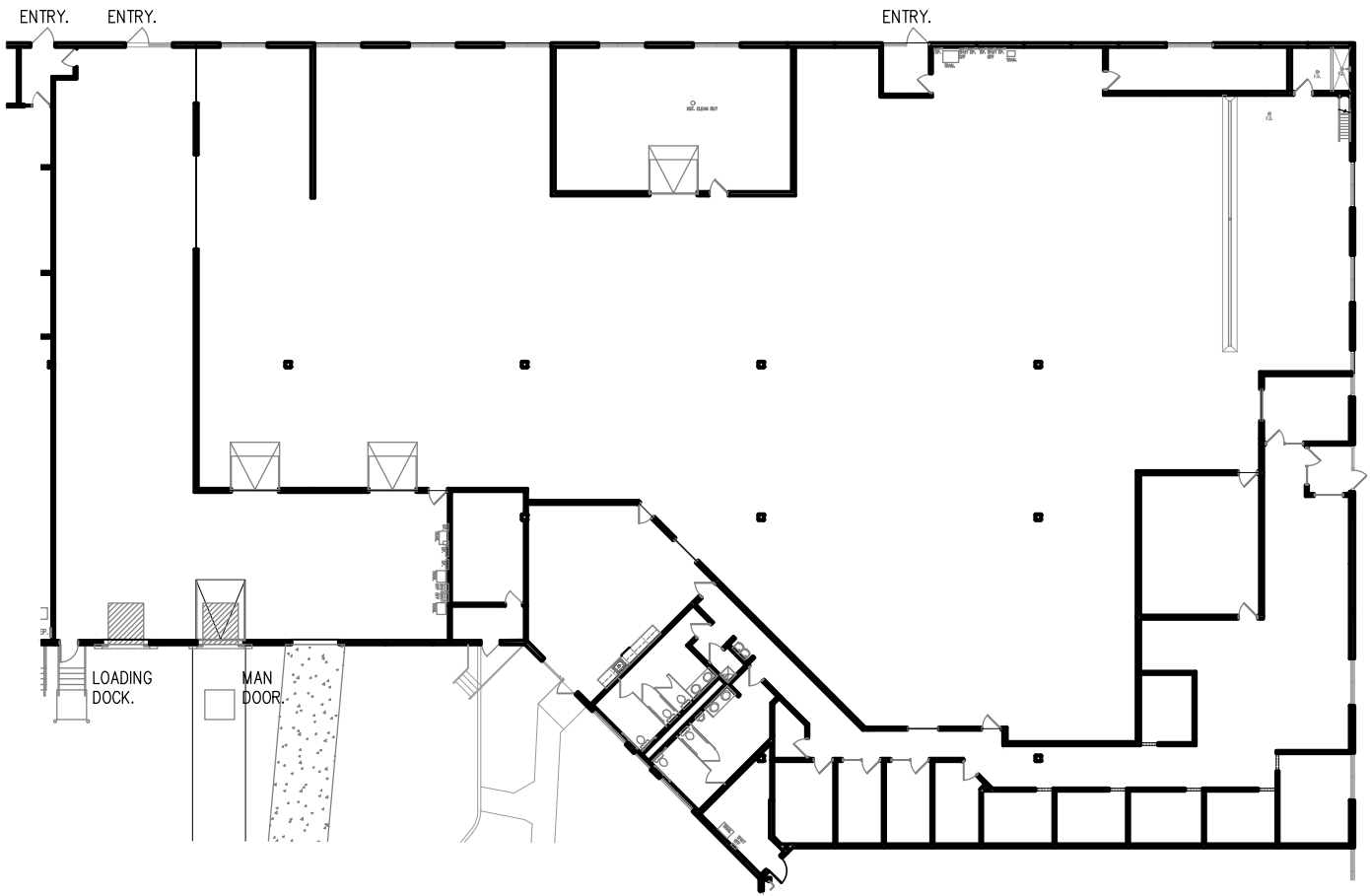
Colliers

1600 Utica Avenue S Ste 300

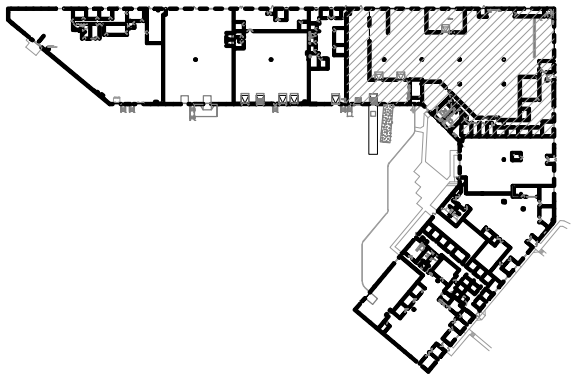
St. Louis Park, MN 55416

P: +1 952 897 7700

colliers.com



Building Key:

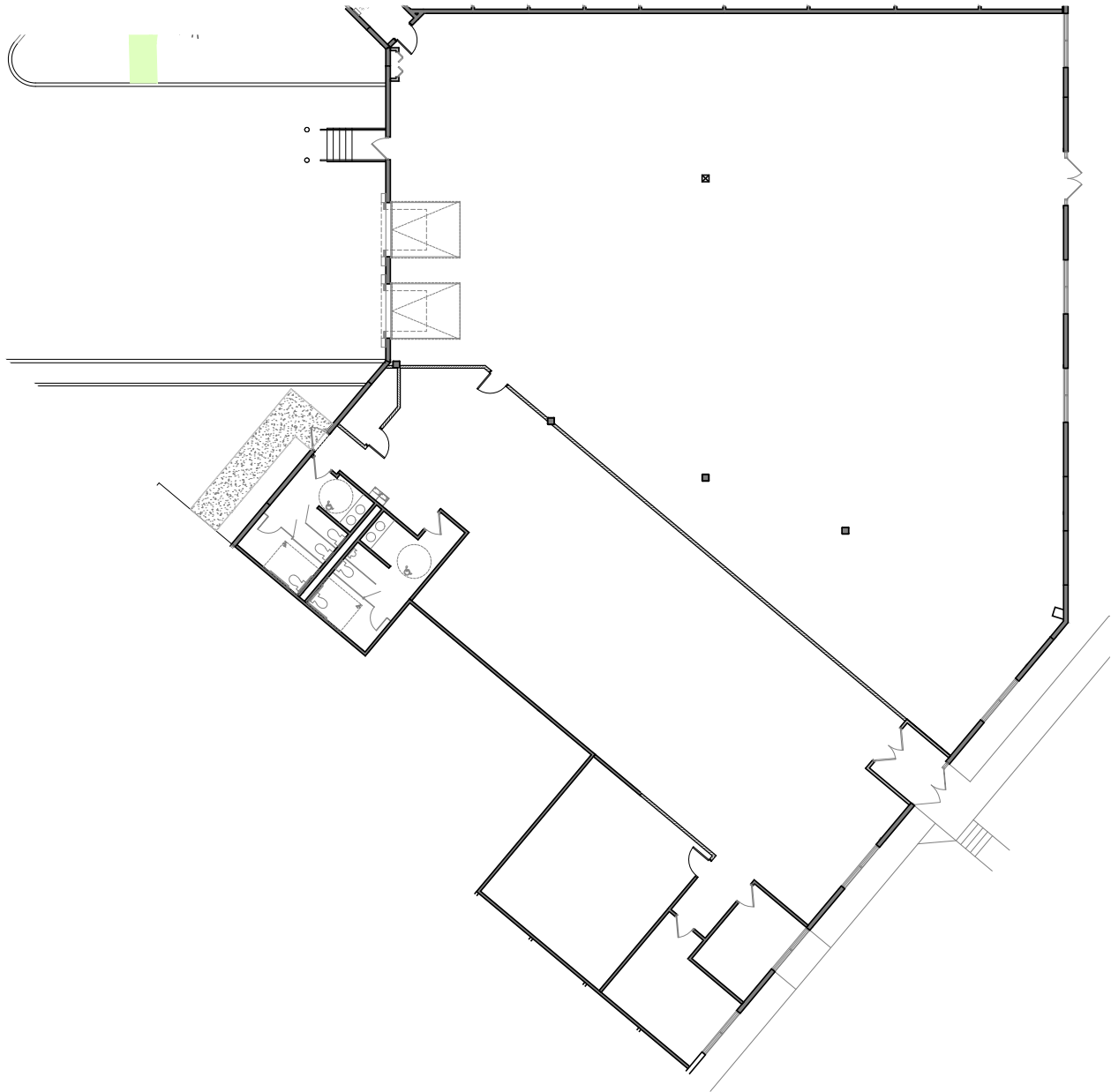


Floor Plan
Scale: 1/32"=1'-0"

Suite 200

Oakview Business Park I

Suite 200 - 23,822 Sq. Ft.
1284 Corporate Center Drive
Eagan, MN 55121

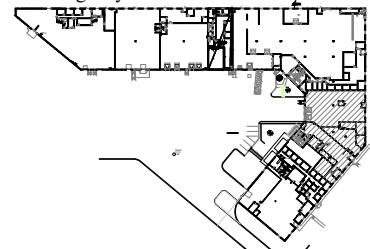


Floor Plan

Scale: 1/16"=1'-0"
 Comm. 2024.080.0
 Date: 05.13.2024
 Rev. 05.16.2024

Office = 4,709 Sq. Ft.
 Whse. = 8,421 Sq. Ft.
 Total = 13,130 Sq. Ft.

Building Key:



Suite 400

Oakview Business Park I
 1284 Corporate Center Drive
 Eagan, MN 55121



Leasing Contact:
 Evens Moller (952) 897-7776

Suite 150

8,303 SF Total

1,953 SF Office

6,350 SF Whse

Four (4) dock doors

