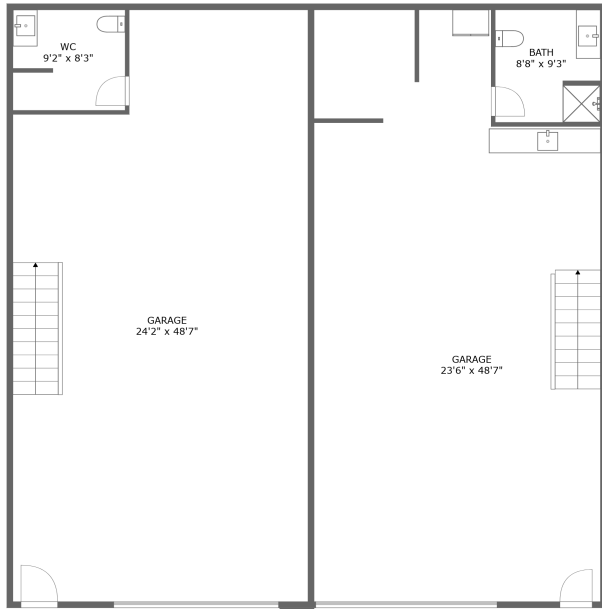
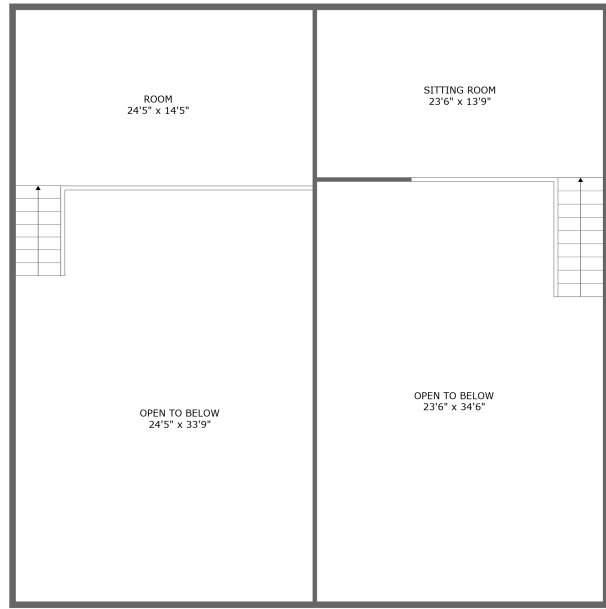


Home report

# 1010 I-25,A04 & A05, Castle Rock, CO, US, A04 & A05



FLOOR 1



FLOOR 2

**Total Area: 919 sq. ft**

Floor 1: 156 sq. ft, Floor 2: 763 sq. ft

Excluded: Garage 2152 sq. ft, Open to below 1577 sq. ft, Walls: 228 sq. ft

## Property summary

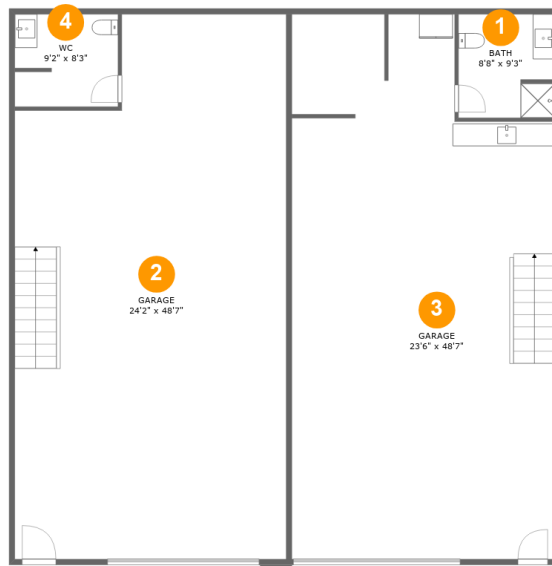
 **2** Floors

 **1** Bathrooms

 **1** Half baths

 **2** Garages

# 1010 I-25,A04 & A05, Castle Rock, CO, US, A04 & A05



## Room dimensions

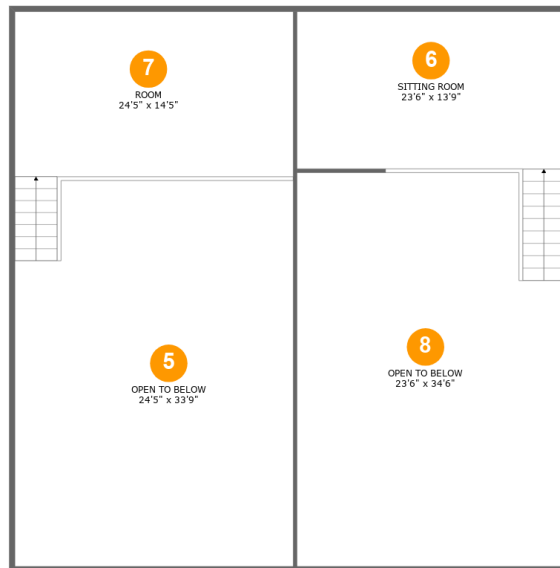
Floor 1

Total:156sqft

Excluded: 2152sqft

| # |        | Max Dimensions | sqft        | Included |
|---|--------|----------------|-------------|----------|
| 1 | Bath   | 8'8" x 9'3"    | 79 sq. ft   | Yes      |
| 2 | Garage | 24'2" x 48'7"  | 1094 sq. ft | No       |
| 3 | Garage | 23'6" x 48'7"  | 1058 sq. ft | No       |
| 4 | WC     | 9'2" x 8'3"    | 75 sq. ft   | Yes      |

# 1010 I-25,A04 & A05, Castle Rock, CO, US, A04 & A05



## Room dimensions

Floor 2

Total:763sqft

Excluded: 1577sqft

| # |               | Max Dimensions | sqft       | Included |
|---|---------------|----------------|------------|----------|
| 5 | Open To Below | 24'5" x 33'9"  | 795 sq. ft | No       |
| 6 | Sitting Room  | 23'6" x 13'9"  | 366 sq. ft | Yes      |
| 7 | Room          | 24'5" x 14'5"  | 389 sq. ft | Yes      |
| 8 | Open To Below | 23'6" x 34'6"  | 771 sq. ft | No       |

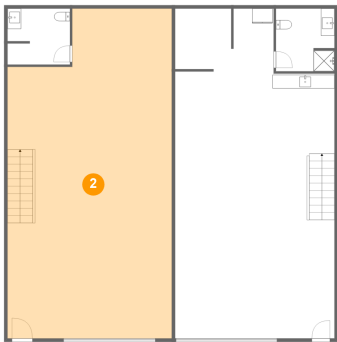
## 1 Floor 1 - Bath



Max Dimensions: 8'8" x 9'3"  
Calculated Area: 79 sq. ft  
Included: Yes

Heated: Yes  
Finished: Yes  
Enclosed: Yes  
Contiguous: Yes  
Permitted: Yes  
Wet space: Yes  
Addition: No  
Conversion: No

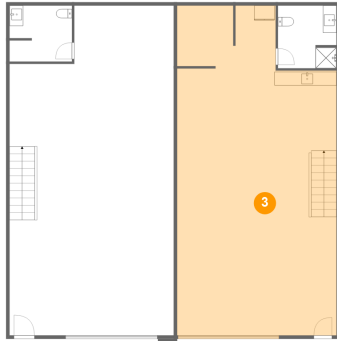
## 2 Floor 1 - Garage



Max Dimensions: 24'2" x  
48'7"  
Calculated Area: 1094 sq. ft  
Included: No

Heated: No  
Finished: No  
Enclosed: Yes  
Contiguous:  
Yes  
Permitted: Yes  
Wet space: No  
Addition: No  
Conversion: No

### 3 Floor 1 - Garage



Max Dimensions: 23'6" x 48'7"  
Calculated Area: 1058 sq. ft  
Included: No

Heated: No  
Finished: No  
Enclosed: Yes  
Contiguous: Yes  
Permitted: Yes  
Wet space: No  
Addition: No  
Conversion: No

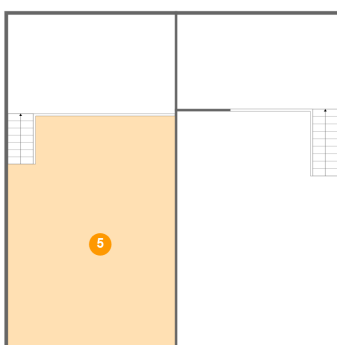
### 4 Floor 1 - WC



Max Dimensions: 9'2" x 8'3"  
Calculated Area: 75 sq. ft  
Included: Yes

Heated: Yes  
Finished: Yes  
Enclosed: Yes  
Contiguous: Yes  
Permitted: Yes  
Wet space: Yes  
Addition: No  
Conversion: No

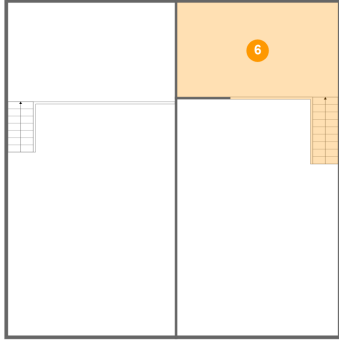
### 5 Floor 2 - Open To Below



Max Dimensions: 24'5" x 33'9"  
Calculated Area: 795 sq. ft  
Included: No

Heated: No  
Finished: No  
Enclosed: No  
Contiguous: Yes  
Permitted: No  
Wet space: No  
Addition: No  
Conversion: No

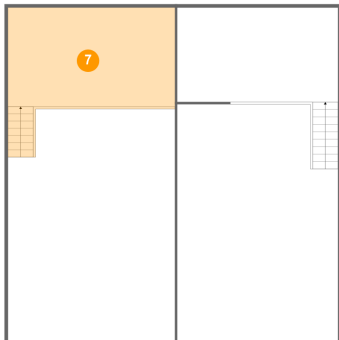
**6** Floor 2 - Sitting Room



Max Dimensions: 23'6" x 13'9"  
Calculated Area: 366 sq. ft  
Included: No

Heated: Yes  
Finished: Yes  
Enclosed: Yes  
Contiguous: No  
Permitted: Yes  
Wet space: No  
Addition: No  
Conversion: No

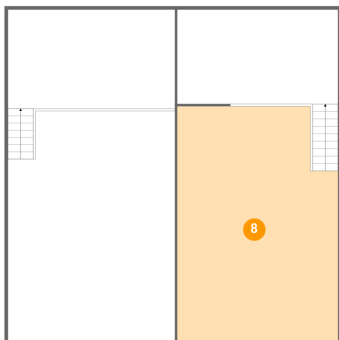
**7** Floor 2 - Room



Max Dimensions: 24'5" x 14'5"  
Calculated Area: 389 sq. ft  
Included: No

Heated: Yes  
Finished: Yes  
Enclosed: Yes  
Contiguous: No  
Permitted: Yes  
Wet space: No  
Addition: No  
Conversion: No

**8** Floor 2 - Open To Below



Max Dimensions: 23'6" x 34'6"  
Calculated Area: 771 sq. ft  
Included: No

Heated: No  
Finished: No  
Enclosed: No  
Contiguous: Yes  
Permitted: No  
Wet space: No  
Addition: No  
Conversion: No