



For Lease | Grocery Anchored Spaces

±48,114 GLA | \$4 PSF + NNN | ±1,223 SF Available

3573 Callan Blvd. | South San Francisco, CA



Contact Broker

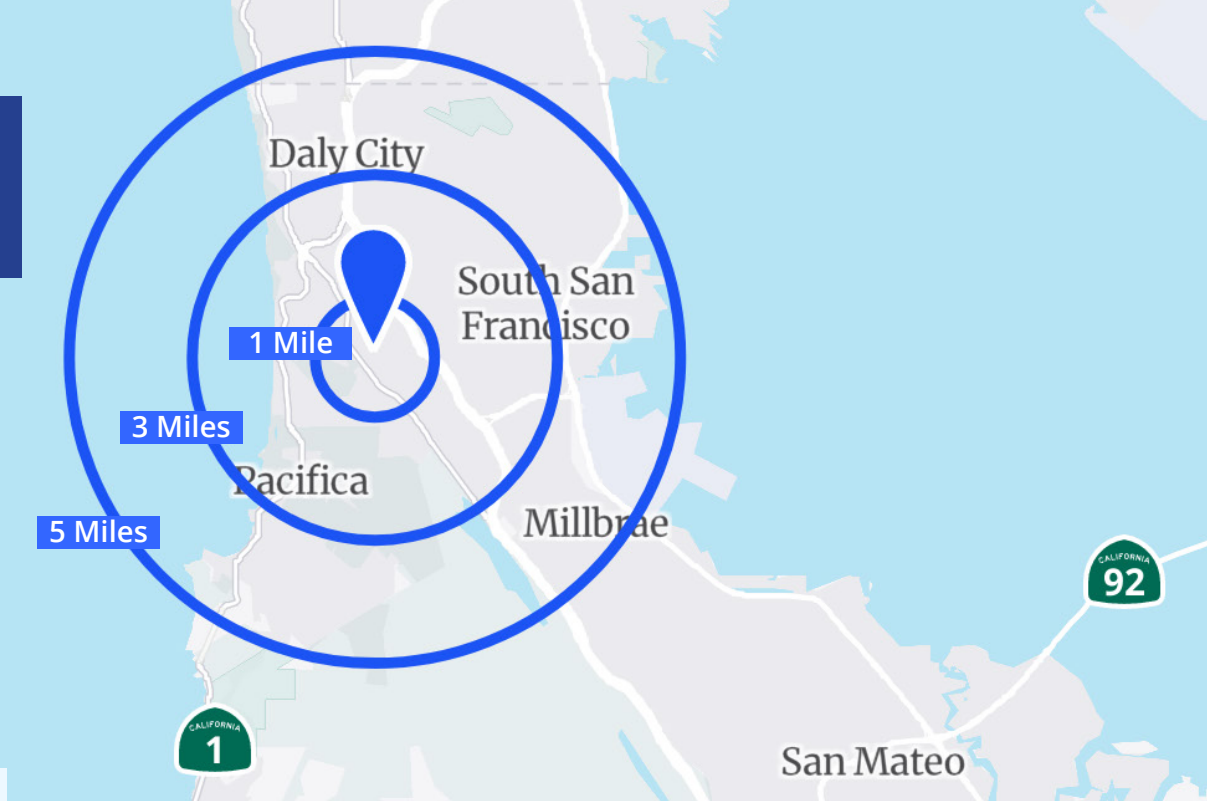
Joe Leabres

Vice President
CA License No. 01483259
joe.leabres@colliers.com
+1 408 520 9000

Colliers

1850 Mt Diablo Blvd., Suite 200
Walnut Creek, CA 94596

Demographics



Highlights


Anchored by Seafood City Supermarket:

High-volume traffic from loyal shoppers. Co-tenants include Grill City, Red Ribbon Bakeshop, and Valerio's.

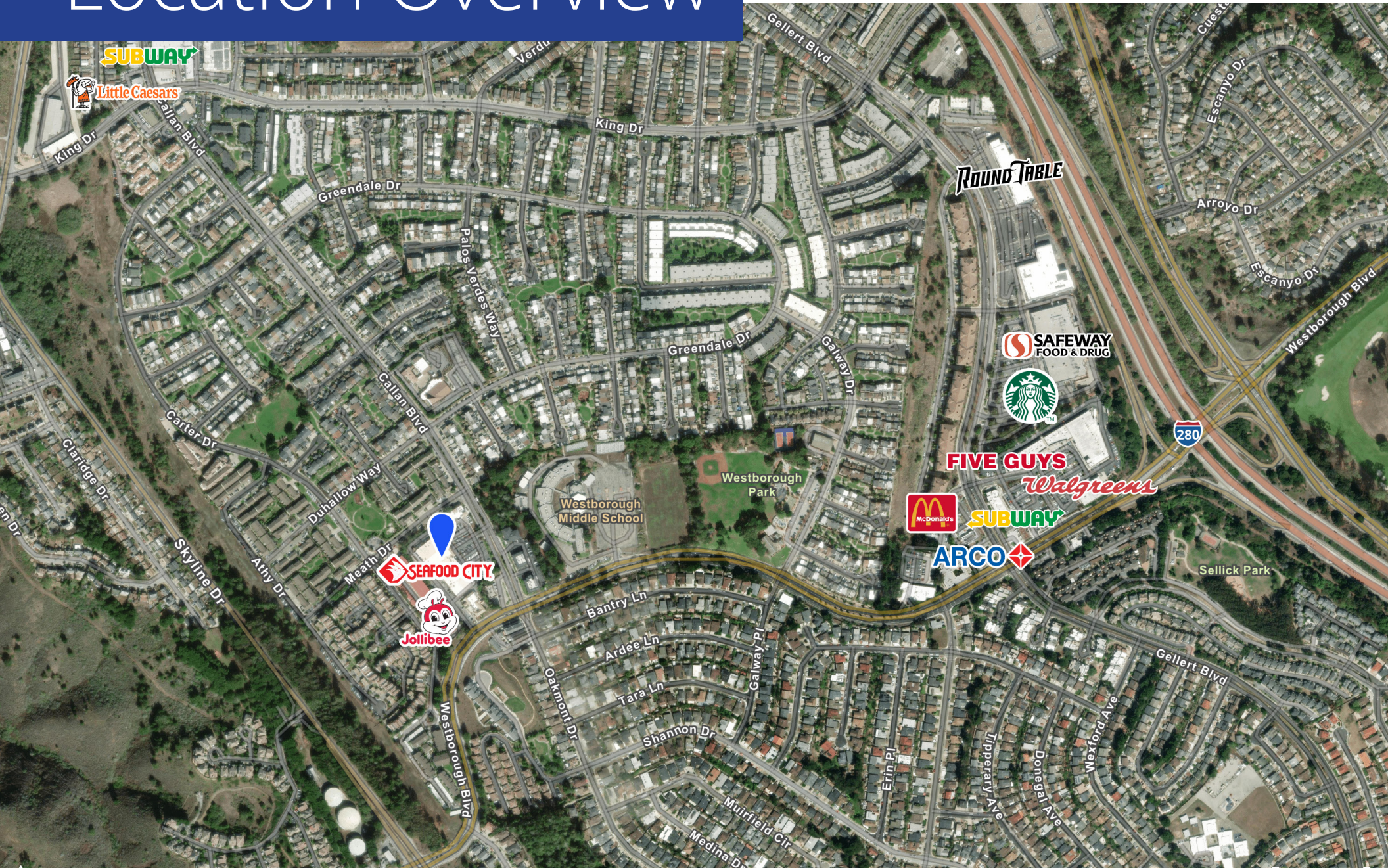
Prime Westborough Location: Dense residential population with strong Asian and Filipino demographics. Easy access to I-280 and El Camino Real.

Versatile Retail Opportunities: Great visibility, ample parking, and flexible floor plans ideal for food, service, or retail concepts.

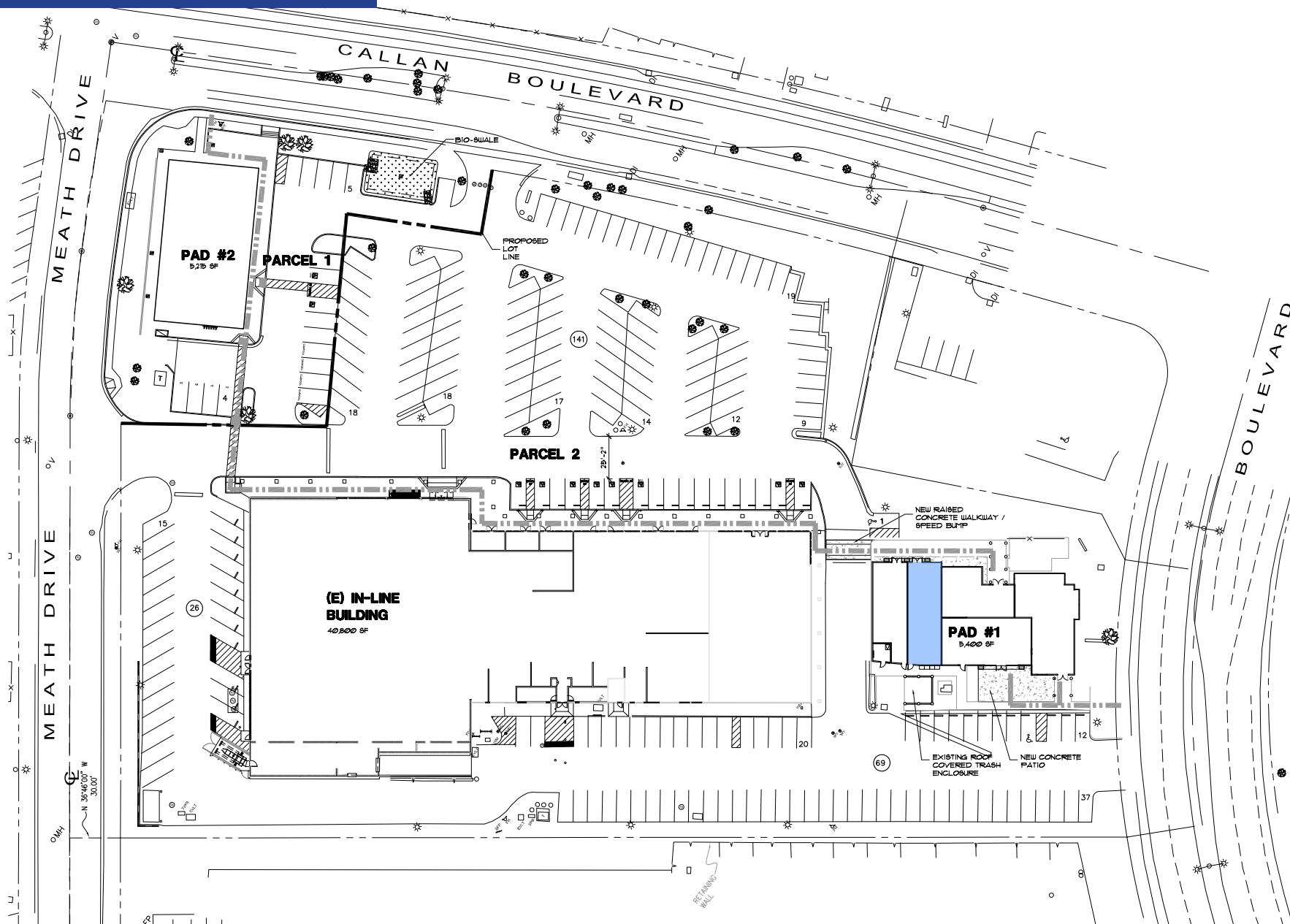
Demographics

	1 mile	3 miles	5 miles
 Total Population	32,067	153,904	318,853
 Daytime Population	19,632	118,532	268,989
 Total Households	9,836	50,995	103,188
 Median HH Income	\$151,109	\$128,774	\$124,256
 Education <i>(Bachelor's/graduate/prof degree)</i>	46%	46%	52%
 Total Businesses	396	4,216	9,162
 Total Employees	2,620	45,741	107,648
 White Collar Employees	75%	72%	69%

Location Overview



Site Plan

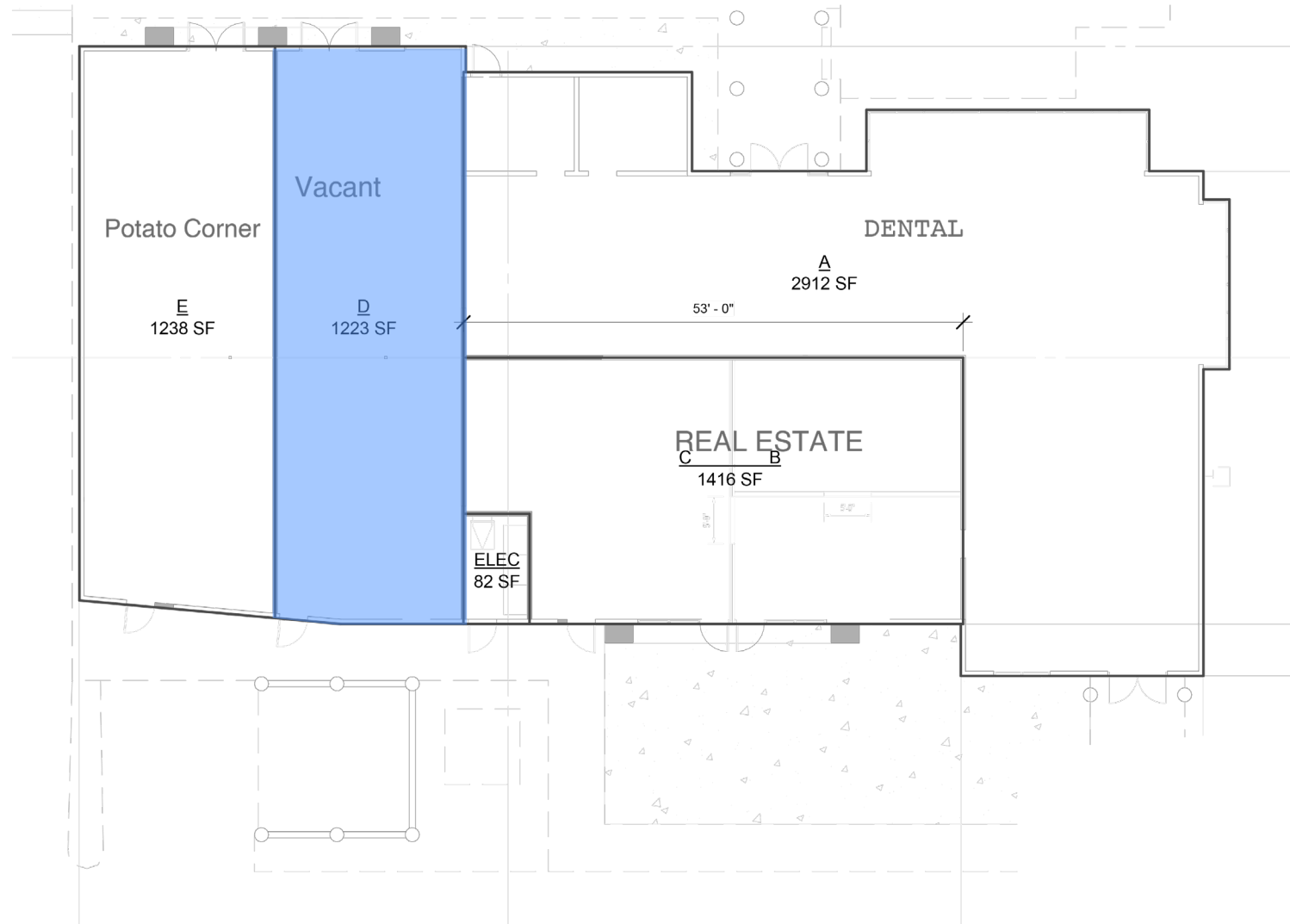


Available Units

Suite Availability

D ±1,223 SF

Available Space



Copyright © 2025 Colliers.
Information herein has been obtained from sources deemed reliable, however its accuracy cannot be guaranteed. The user is required to conduct their own due diligence and verification.

Photo Gallery

