

Cambridge Street, Harrogate

Retail unit to let
Approx 780 sq ft

Rear of 31a Cambridge Street
Harrogate
HG1 1RW



Location

The unit is located in the heart of Harrogate town centre at the rear of Cambridge Street. Pandora, Sainsburys, Primark, and HSBC all trade in the immediate proximity.

This white box unit is perfectly set up for a studio, office or storage.

The area features a spacious open-plan layout, complete with a kitchenette and toilet facilities.

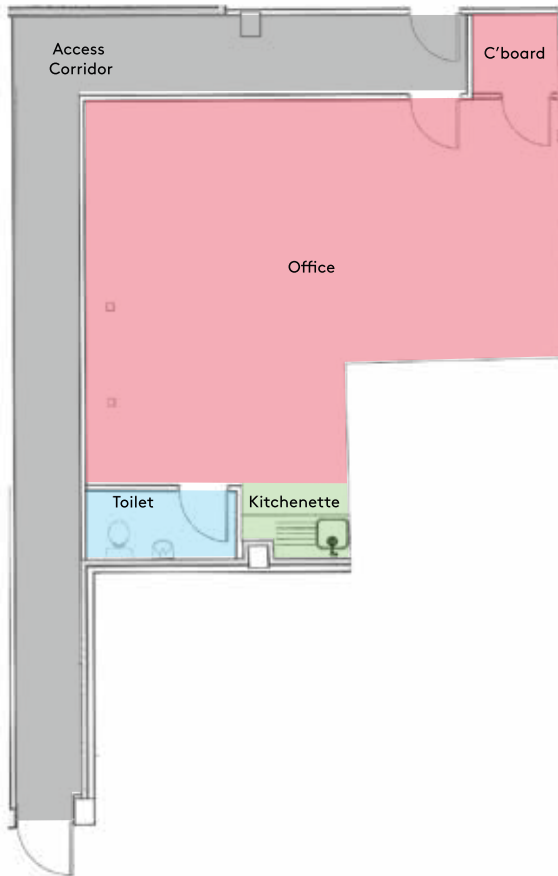
- Newly refurbished unit to let in the heart of Harrogate town centre.
- Use Class E
- Ground floor , c 780 sq ft
- Excellent town centre location
- Secure private entrance



0330 606 1410 | info@tlb.properties | tlb.properties

Residential | Retail | Commercial | The perfect space for you.

Floor Plan



Tenure

The property is available by way of an effective FRI lease for a term of years to be agreed.

Rent

£15,000 per annum exclusive of rates and service charge.

Text, plans and images are for guidance only . CGI generated images are for reference only.
Plans are not to scale and any dimensions, areas or distances given are approximate.
Rateable Value and energy performance to be assessed.