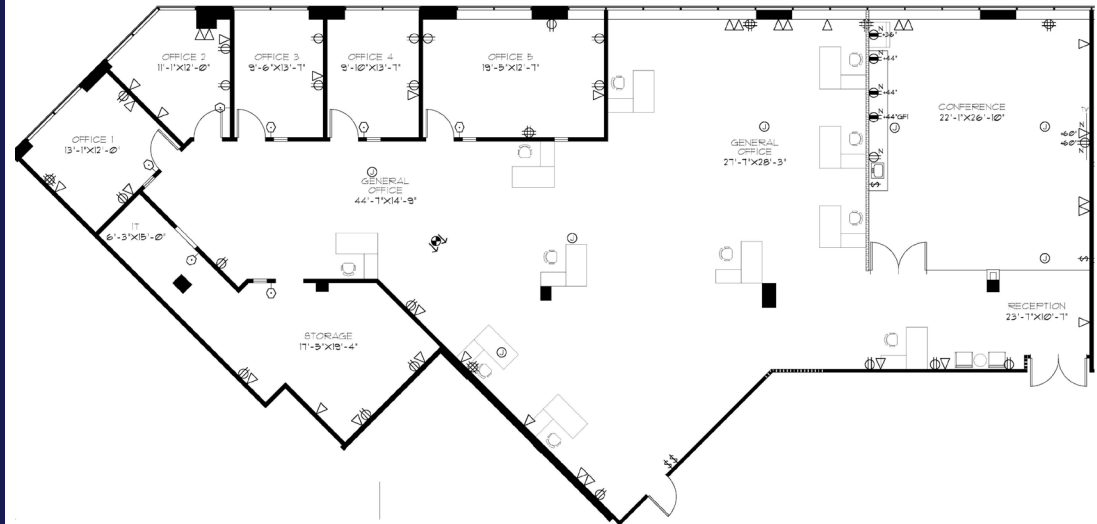


CYPRESS CORPORATE PLAZA



10805 Holder Street
Cypress, CA 90630

Suite 245



Suite: 245

Date Available NOW

Lease Rate (FSG) \$2.25

Size (RSF) 5,037 Rentable Square Feet

Description: Creative Space, 5 Private Offices,
Conference Room, Large Storage
and Utility Room.

For more information, please contact:

Steve Ehrlich
Senior Vice President
Orange County Office
949.468.2328
sehricht@naicapital.com
Cal DRE Lic #01092019

John Bosko
Executive Vice President
Orange County Office
949.468.2323
Johnbosko@naicapital.com
Cal DRE Lic #00967775

NAI Capital
COMMERCIAL REAL ESTATE SERVICES, WORLDWIDE

NAI Capital Commercial
1920 Main St., Suite #100
Irvine, CA 92614 949-854-6600
naicapital.com

No warranty, express or implied, is made as to the accuracy of the information contained herein. This information is submitted subject to errors, omissions, change of price, rental or other conditions, withdrawal without notice, and is subject to any special listing conditions imposed by our principals. Cooperating brokers, buyers, tenants and other parties who receive this document should not rely on it, but should use it as a starting point of analysis, and should independently confirm the accuracy of the information contained herein through a due diligence review of the books, records, files and documents that constitute reliable sources of the information described herein. Logos are for identification purposes only and may be trademarks of their respective companies. NAI Capital, Inc. Cal DRE Lic. #02130474.