

11750 VETERANS MEMORIAL HWY

DOUGLASVILLE,
GA 30134

FOR SUBLEASE
40,192± SF Freestanding Warehouse
4± Acres Industrial Outside Storage

IAN HICKS

Associate
678.348.6319
ihicks@kingindustrial.com

SIM DOUGHTIE, CCIM, SIOR, MCR, SLCR

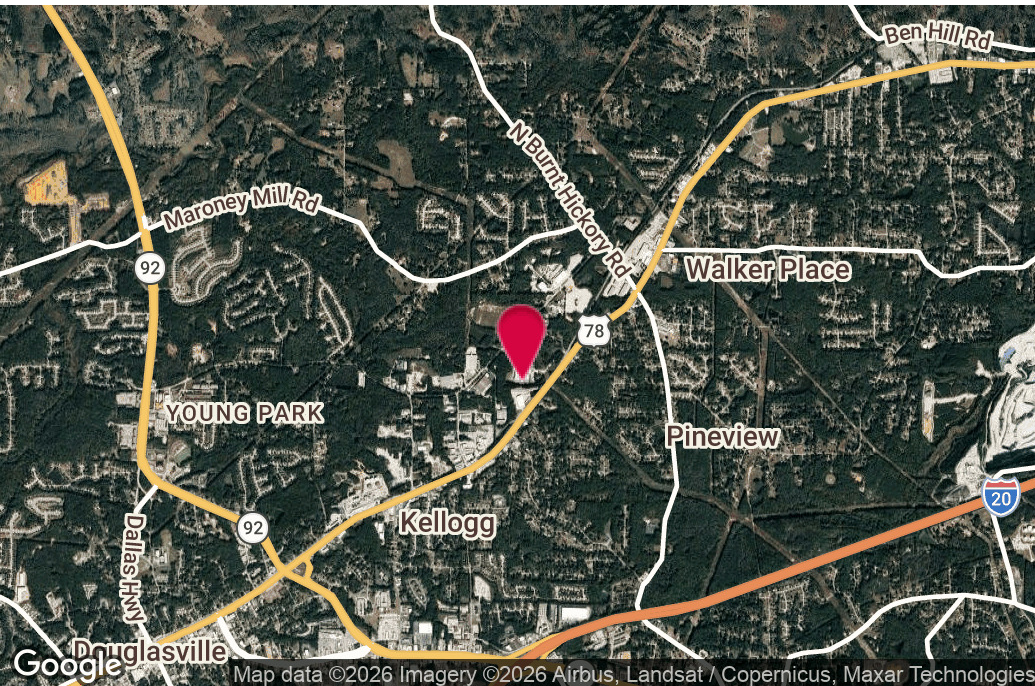
President
404.942.2002
sdoughtie@kingindustrial.com

King Industrial
Realty, Inc.

Industrial • Commercial • Investment
404.942.2000 | kingindustrial.com



FOR SUBLEASE
40,192± SF



PROPERTY HIGHLIGHTS

- 8,169± SF Office Space
- 32,023± SF Warehouse Space
- 3 Oversized Drive-In Doors
- 1 Dock Door, 1 Dock Platform, 1 Van High Door
- 14' - 22' Clear in Warehouse
- Additional 3,860± SF Metal Shed on Property
- 7.48± Total Acres w/ 4± Acres of IOS (3± ac paved & 1± ac gravelled)
- Previously Active Rail Spur (Norfolk Southern)
- Zoned Light Industrial

IAN HICKS

Associate
678.348.6319
ihicks@kingindustrial.com

SIM DOUGHTIE, CCIM, SIOR, MCR, SLCR

President
404.942.2002
sdoughtie@kingindustrial.com

Every effort has been made to provide accurate information, but no liability is assumed for errors or omissions.

King Industrial Realty, Inc. **CORFAC** INTERNATIONAL

Industrial • Commercial • Investment
404.942.2000 | kingindustrial.com

EXTERIOR PHOTOS



IAN HICKS

Associate

678.348.6319

ihicks@kingindustrial.com

SIM DOUGHTIE, CCIM, SIOR, MCR, SLCR

President

404.942.2002

sdoughtie@kingindustrial.com

Every effort has been made to provide accurate information, but no liability is assumed for errors or omissions.

King Industrial Realty, Inc. **CORFAC** INTERNATIONAL

Industrial • Commercial • Investment
404.942.2000 | kingindustrial.com

WAREHOUSE PHOTOS



IAN HICKS

Associate

678.348.6319

ihicks@kingindustrial.com

SIM DOUGHTIE, CCIM, SIOR, MCR, SLCR

President

404.942.2002

sdoughtie@kingindustrial.com

Every effort has been made to provide accurate information, but no liability is assumed for errors or omissions.

King Industrial
Realty, Inc. **CORFAC**
INTERNATIONAL

Industrial • Commercial • Investment
404.942.2000 | kingindustrial.com

INTERIOR
PHOTOS



IAN HICKS

Associate

678.348.6319

ihicks@kingindustrial.com

SIM DOUGHTIE, CCIM, SIOR, MCR, SLCR

President

404.942.2002

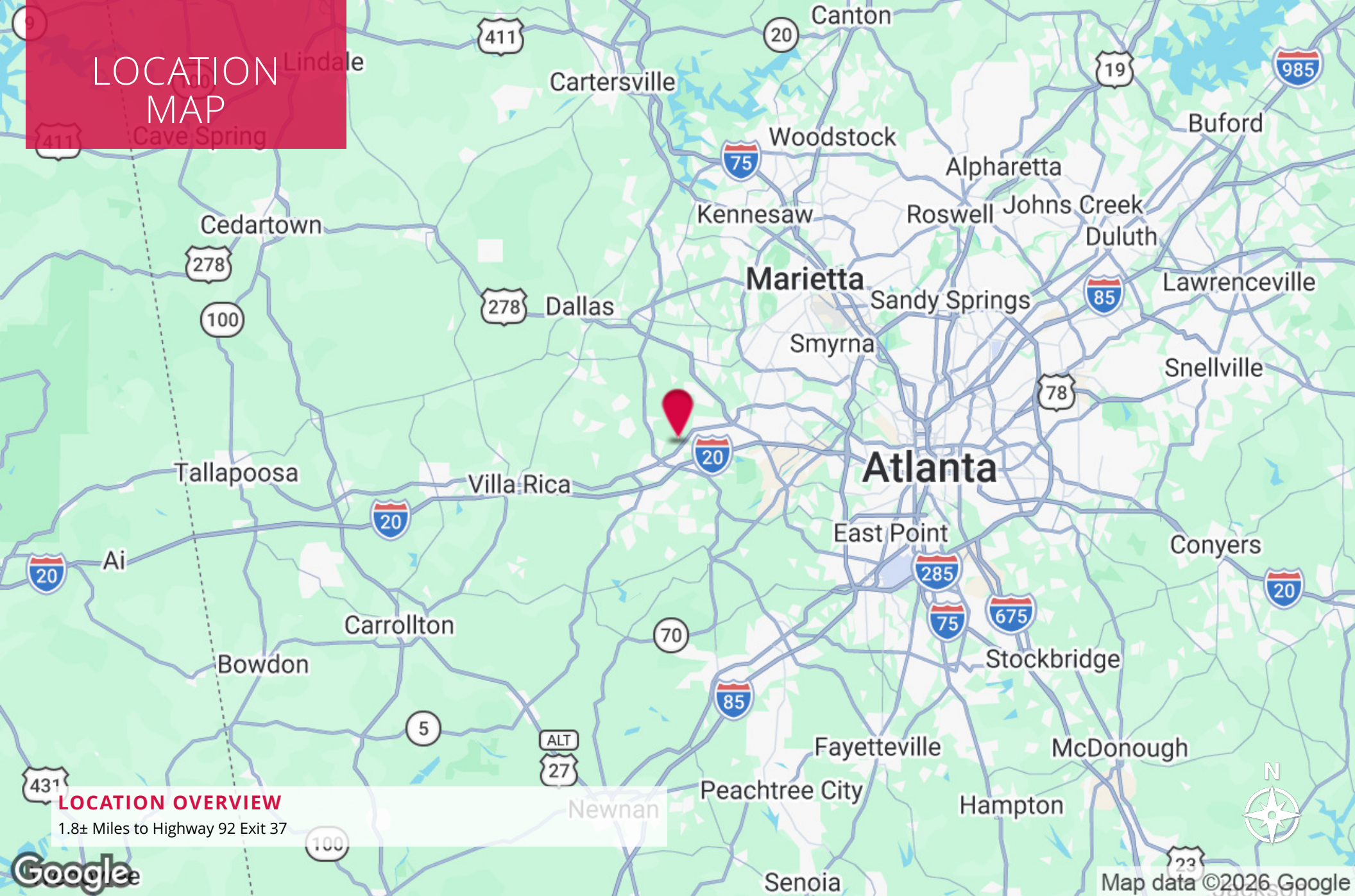
sdoughtie@kingindustrial.com

Every effort has been made to provide accurate information, but no liability is assumed for errors or omissions.

King Industrial Realty, Inc. **CORFAC** INTERNATIONAL

Industrial • Commercial • Investment
404.942.2000 | kingindustrial.com

LOCATION MAP



LOCATION OVERVIEW

1.8± Miles to Highway 92 Exit 37

IAN HICKS

Associate

678.348.6319

ihicks@kingindustrial.com

SIM DOUGHTIE, CCIM, SIOR, MCR, SLCR

President

404.942.2002

sdoughtie@kingindustrial.com

Every effort has been made to provide accurate information, but no liability is assumed for errors or omissions.



Industrial • Commercial • Investment
404.942.2000 | kingindustrial.com

EXCLUSIVELY LISTED BY:

IAN HICKS

Associate

ihicks@kingindustrial.com
678.348.6319

SIM DOUGHTIE, CCIM, SIOR, MCR, SLCR

President

sdoughtie@kingindustrial.com
404.942.2002

King Industrial
Realty, Inc.

Industrial • Commercial • Investment
404.942.2000 | kingindustrial.com