

# TRUIST PLAZA



**510 S. Jefferson Street**  
**Roanoke, Virginia 24011**





# PROPERTY OVERVIEW

TOTAL BUILDING SIZE	139,547 SF
BUILDING HEIGHT	9 Stories
AVAILABLE	1,826 SF-15,033 SF
LEASE RATE	Competitive Rates
PARKING	Attached Parking Garage

## LOCATION OVERVIEW

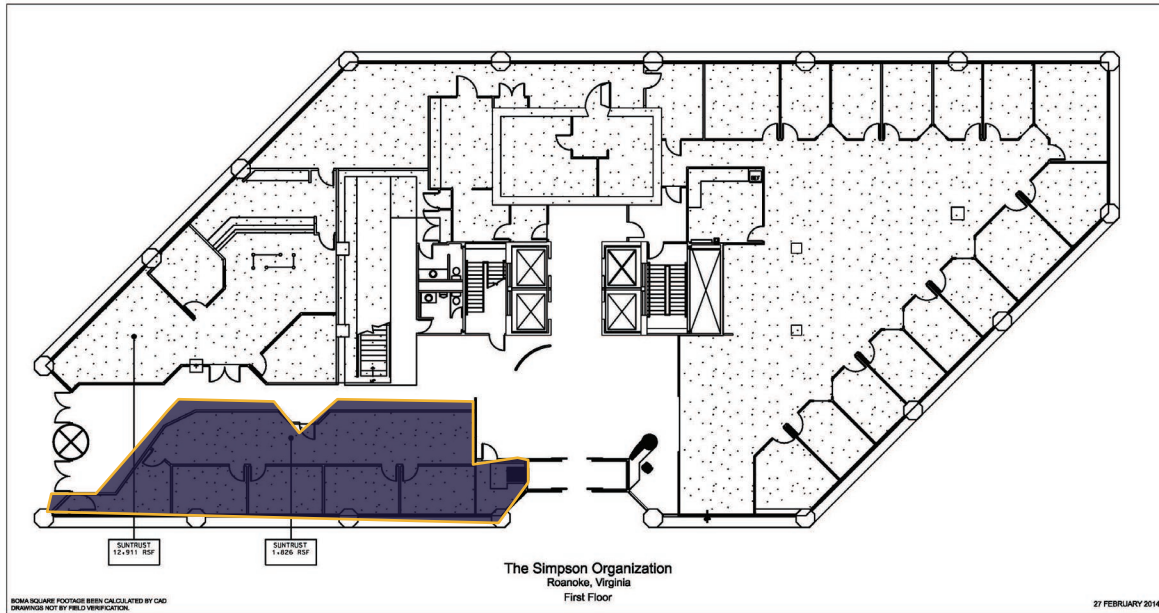
Located on corner of Jefferson Street and Franklin Road. Close to downtown attractions and dining.

60+ restaurants and retail establishments within walking distance

## JOIN CORPROATE TENANTS



## FIRST FLOOR 1,826 RSF



# FLOOR PLANS

## FIRST FLOOR

Entry Suite  
Lease Rate

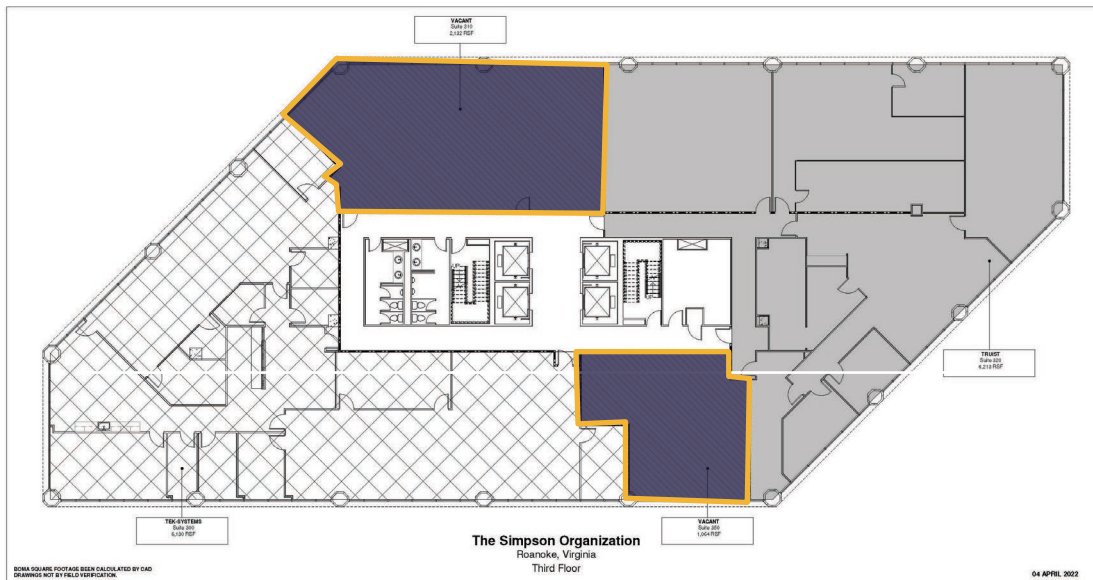
1,826 RSF  
\$26.00 SF

## THIRD FLOOR

Suite 310  
Suite 350  
Lease Rate

2,132 RSF  
1,064 RSF  
\$26.00 SF

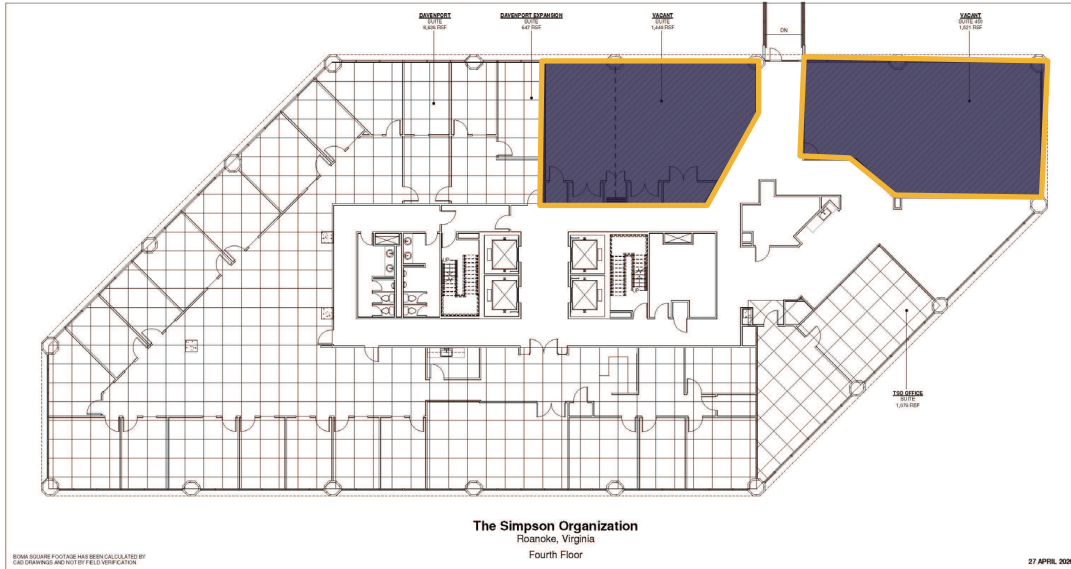
## THIRD FLOOR 2,132 RSF & 1,064 RSF



**MODERN OFFICE SPACE**

**LOCATED IN THE HEART OF  
DOWNTOWN ROANOKE**

## FOURTH FLOOR 1,449 RSF & 1,521 RSF

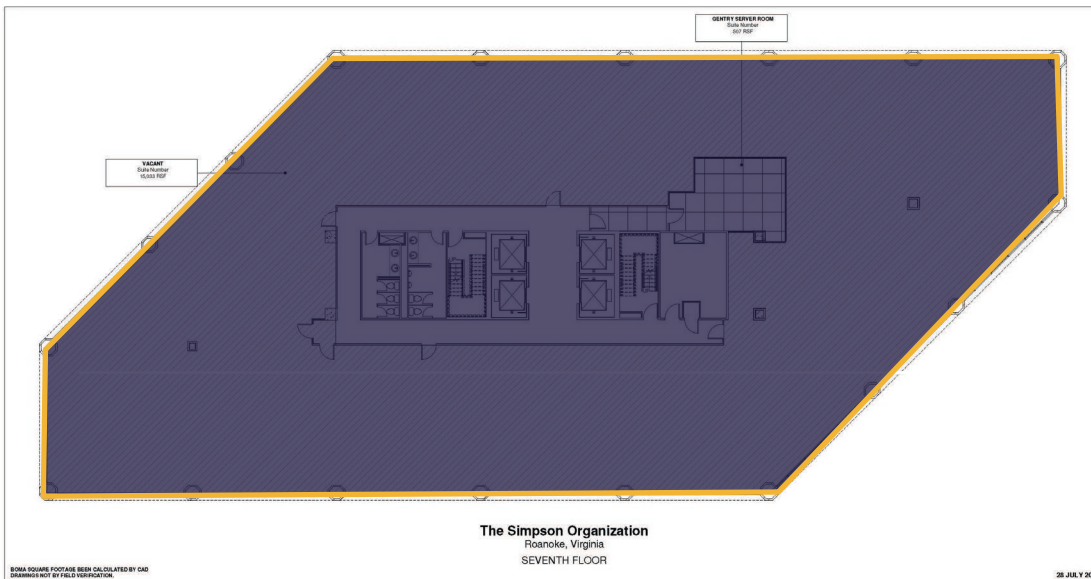


# FLOOR PLANS

## FOURTH FLOOR

Suite 400	1,449 RSF
Suite 450	1,521 RSF
Lease Rate	\$26.00 SF

## SEVENTH FLOOR 15,030 RSF



## SEVENTH FLOOR

Seventh Floor Suite	15,033 RSF
Lease Rate	\$26.00 SF

## MODERN OFFICE SPACE

LOCATED IN THE HEART OF  
DOWNTOWN ROANOKE

# LOCATION



**BUS TRANSPORT STATION**

**COURTHOUSE**

**HIGHER EDUCATION CENTER**

**HOTEL ROANOKE**

**AMTRAK**

**TAUBMAN MUSEUM**

**ROANOKE CITY MARKET BUILDING**

**TRUIST PLAZA**

**PATRICK HENRY HOTEL**

**ELMWOOD PARK**

NORFOLK AVE

FIRST STREET

JEFFERSON STREET

WILLIAMSON RD SE

FRANKLIN RD SE

ELM AVENUE

INTERSTATE 581

220

# LEASING

**For more information, please contact:**

**Barry Ward**

First Vice President

540 767 3015

[barry.ward@thalhimer.com](mailto:barry.ward@thalhimer.com)

Thalhimer  
310 First Street, Suite 300  
Roanoke, VA 24011  
[thalhimer.com](http://thalhimer.com)



Independently Owned and Operated / A Member of the Cushman & Wakefield Alliance

Cushman & Wakefield | Thalhimer © 2025. No warranty or representation, express or implied, is made to the accuracy or completeness of the information contained herein, and same is submitted subject to errors, omissions, change of price, rental or other conditions, withdrawal without notice, and to any special listing conditions imposed by the property owner(s). As applicable, we make no representation as to the condition of the property (or properties) in question.

