

# Pads Available

SEC Camelback Rd & 91st Ave | Phoenix, AZ 85037



**FOR SALE, GROUND LEASE, BTS**

## 5 Pads

AVAILABLE

Pad 1 - ± .74 AC

Pad 2 - ± 1 AC

Pad 3 - ± 1.84 AC

Pad 4 - ± .73AC

Pad 5 - ± .6 AC

## CONTACT

**ED BEEH**

602.682.6040

ed.beeh@srsre.com

**CHRIS ABDAYEM, CCIM**

602.682.6052

chris.abdayem@srsre.com

## ABOUT THE PROPERTY

- Commercial pads available for sale, ground lease, BTS
- Located 1 mile from Loop 101 and State Farm Stadium, Home of the AZ Cardinals
- Across from Copper Canyon High School with 2,423 students
- Zoned C-2, City of Phoenix

## DEMOGRAPHICS

	1 Mile	3 Miles	5 Miles
2025 Est Population	18,337	157,514	377,959
2030 Est Population	19,420	168,237	401,237
Average HH Income	\$120,218	\$105,646	\$92,417
Daytime Population	12,209	118,069	318,648

Year: 2025 | Source: Esri

## TRAFFIC COUNTS

Camelback Road	33,865 VDP
91st Avenue	20,103 VPD

Year: 2025 | Source: ADOT

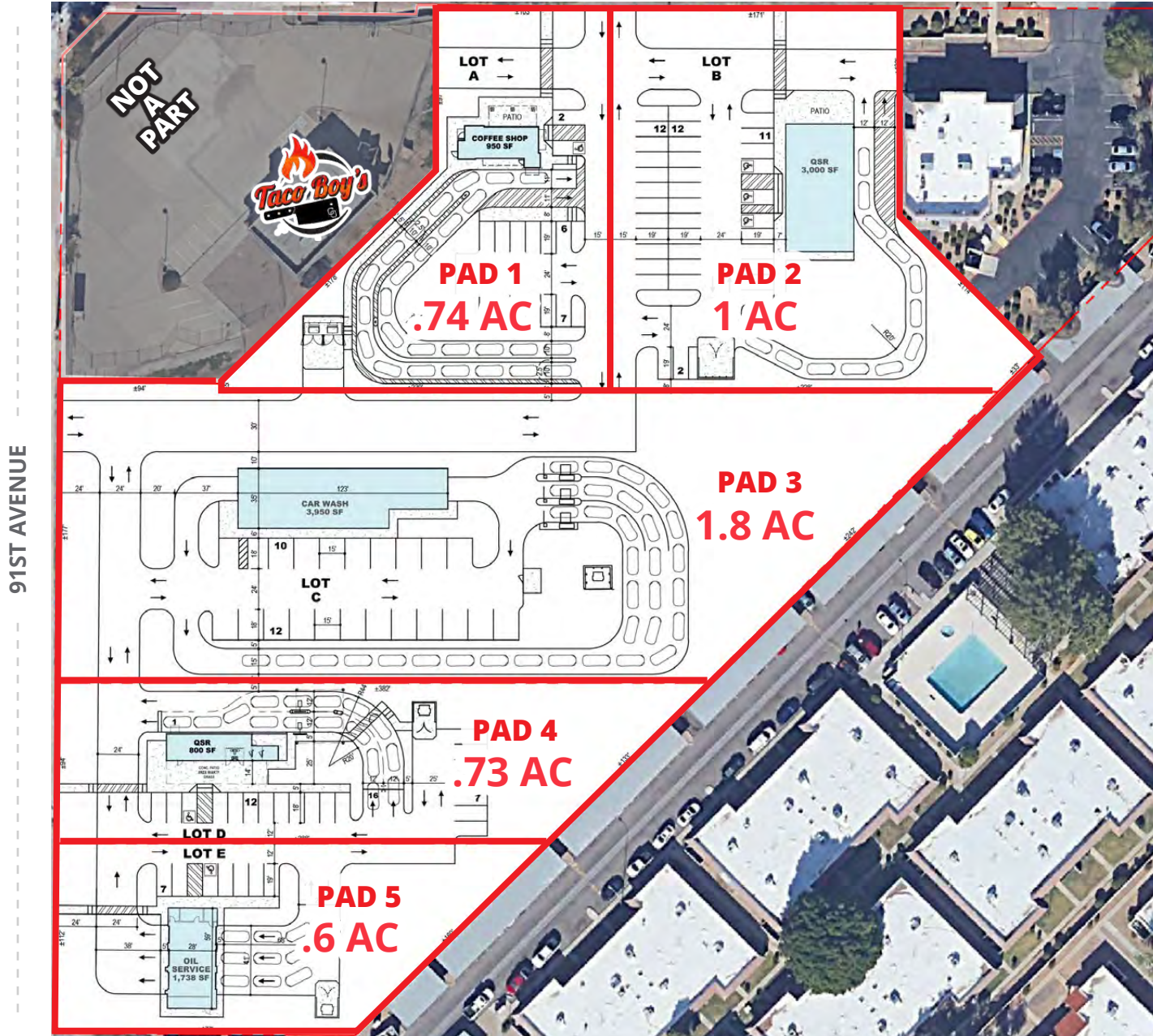


# Pads Available

SEC Camelback Rd & 91st Ave | Phoenix, AZ 85037



CAMELBACK ROAD



# Pads Available

SEC Camelback Rd & 91st Ave | Phoenix, AZ 85037



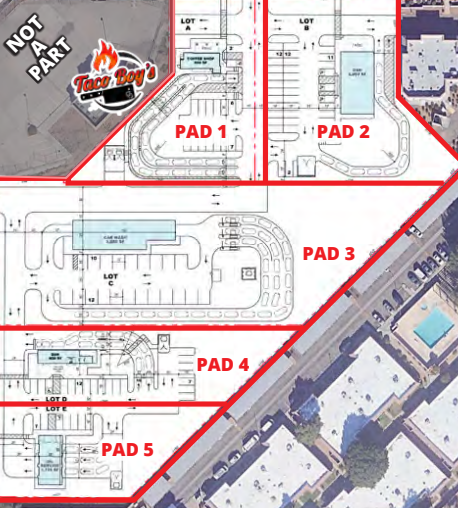
**Copper Canyon High School**  
2,423 Students

**StoneHaven Master Planned Community**  
1,392 Units

**PARCEL 21 (COMMERCIAL)**

**Sunrise Preschools**

**PLANNED RETAIL**

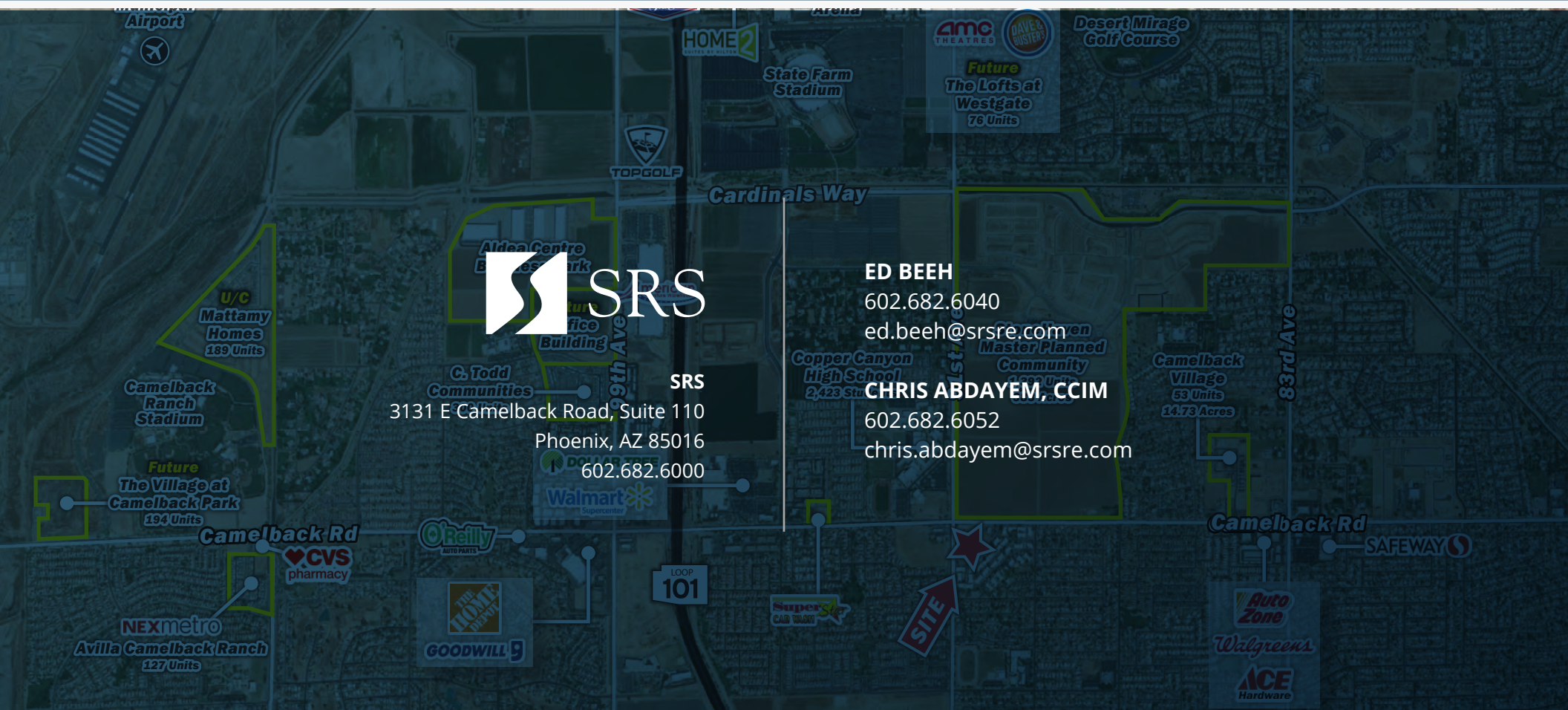


**Vista de Oeste Condominiums**

# SEC Camelback Road & 91st Avenue

Phoenix, Arizona 85037





**SRS**  
 3131 E Camelback Road, Suite 110  
 Phoenix, AZ 85016  
 602.682.6000

**ED BEEH**  
 602.682.6040  
 ed.beeh@srsre.com

**CHRIS ABDAYEM, CCIM**  
 602.682.6052  
 chris.abdayem@srsre.com

**SRSRE.COM**

© SRS

The information presented was obtained from sources deemed reliable;  
 however SRS does not guarantee its completeness or accuracy.