

33155-33161 CAMINO CAPISTRANO, SAN JUAN CAPISTRANO, CA 92675

THE ESPLANADE BUSINESS PARK



Office, industrial, medical, and retail suites available for lease in San Juan Capistrano, CA

Immediate occupancy

Freeway signage

Convenient access to the 5 Freeway

ERIC TSE

949.557.5018 | eric.tse@kidder.com

LIC N° 01476614

ALEX MATAR

949.557.5069 | alex.matar@kidder.com

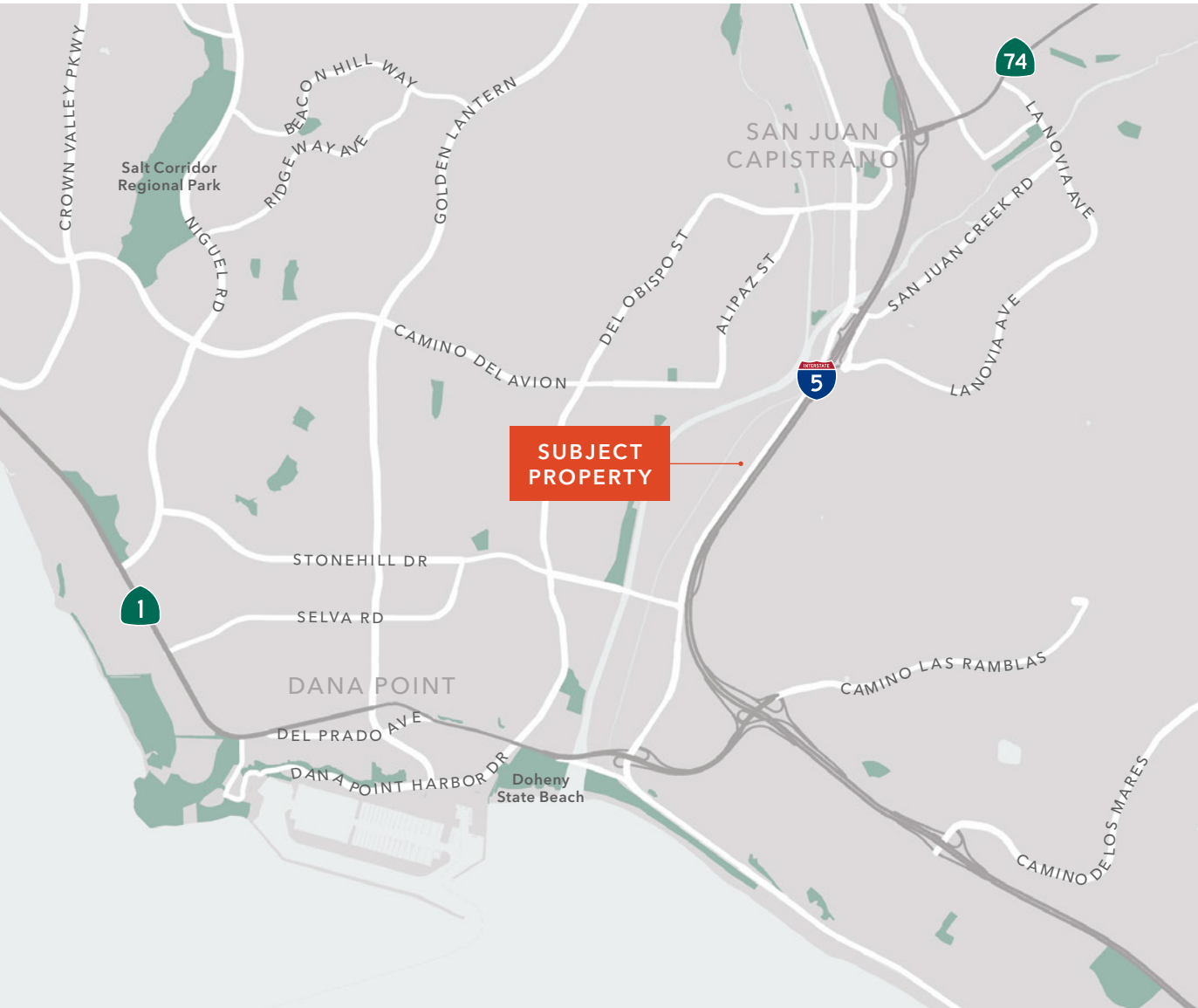
LIC N° 01990417

KIDDER.COM

This information supplied herein is from sources we deem reliable. It is provided without any representation, warranty, or guarantee, expressed or implied as to its accuracy. Prospective Buyer or Tenant should conduct an independent investigation and verification of all matters deemed to be material, including, but not limited to, statements of income and expenses. Consult your attorney, accountant, or other professional advisor. All Kidder Mathews designs are the sole property of Kidder Mathews. Branded materials and layouts are not authorized for use by any other firm or person.



THE ESPLANADE BUSINESS PARK



Availabilities

Building	Suite	RSF	Notes
33161	B1	±535 SF	Two (2) offices, conference room, open area and storage room

ERIC TSE
 949.557.5018 | eric.tse@kidder.com
 LIC N° 01476614

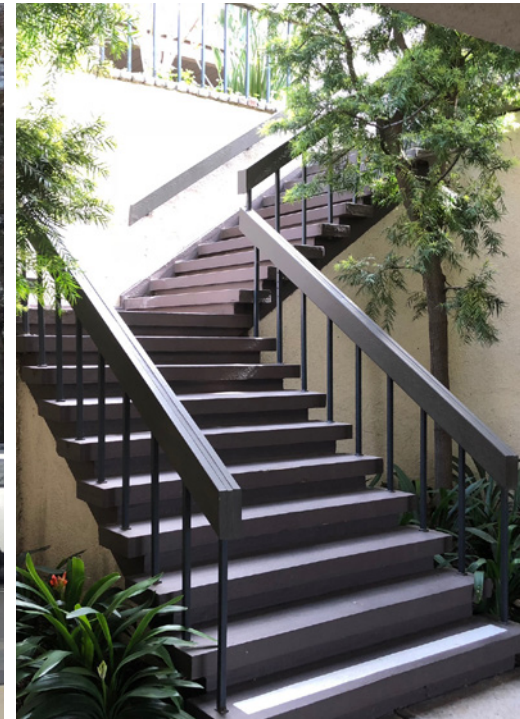
ALEX MATAR
 949.557.5069 | alex.matar@kidder.com
 LIC N° 01990417

KIDDER.COM

This information supplied herein is from sources we deem reliable. It is provided without any representation, warranty, or guarantee, expressed or implied as to its accuracy. Prospective Buyer or Tenant should conduct an independent investigation and verification of all matters deemed to be material, including, but not limited to, statements of income and expenses. Consult your attorney, accountant, or other professional advisor. All Kidder Mathews designs are the sole property of Kidder Mathews. Branded materials and layouts are not authorized for use by any other firm or person.



THE ESPLANADE BUSINESS PARK



ERIC TSE
949.557.5018
eric.tse@kidder.com
LIC N° 01476614

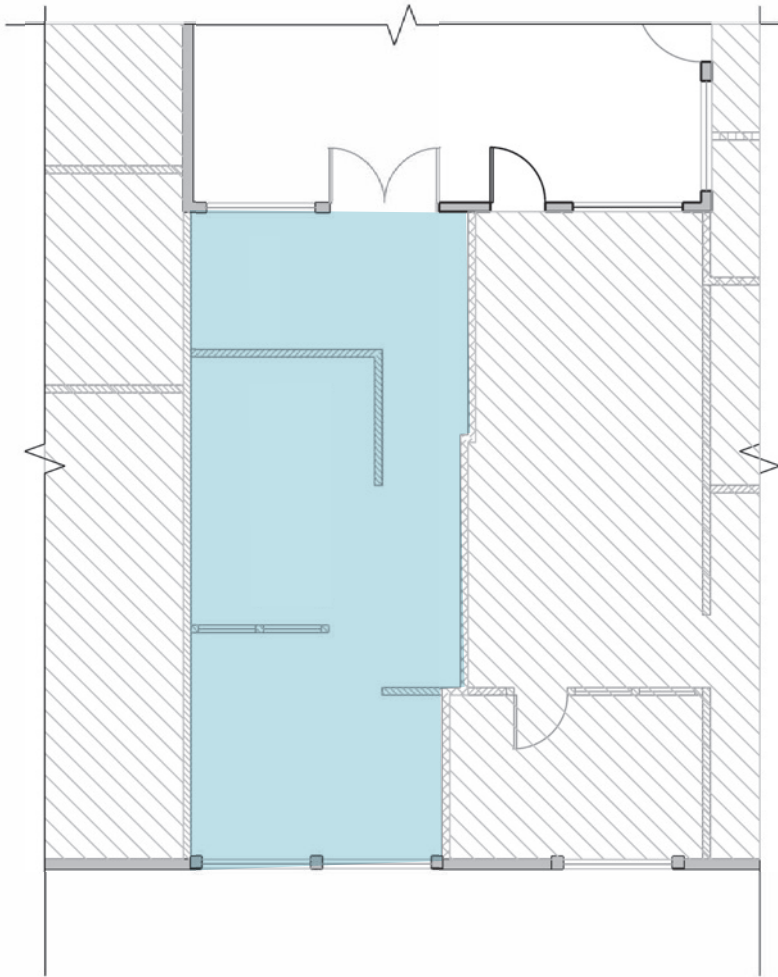
ALEX MATAR
949.557.5069
alex.matar@kidder.com
LIC N° 01990417

KIDDER.COM

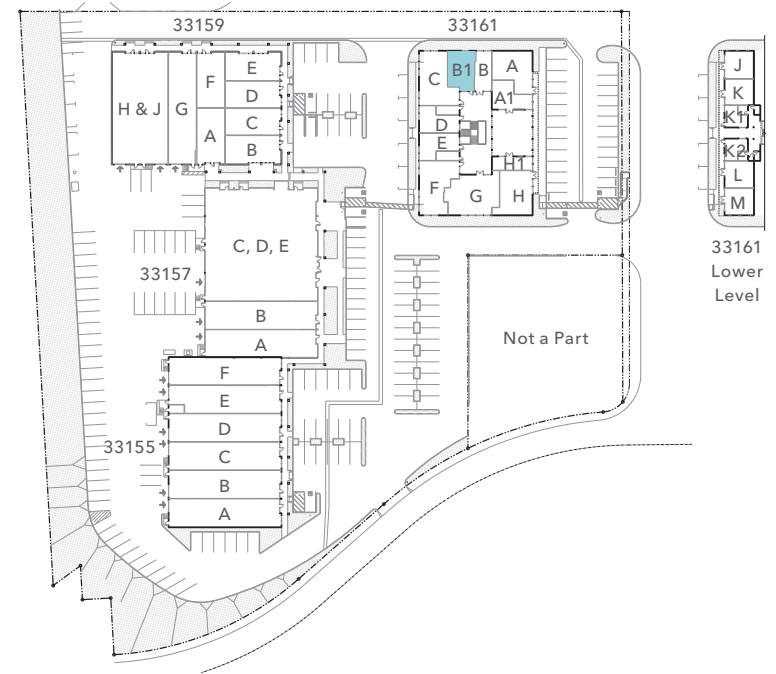
This information supplied herein is from sources we deem reliable. It is provided without any representation, warranty, or guarantee, expressed or implied as to its accuracy. Prospective Buyer or Tenant should conduct an independent investigation and verification of all matters deemed to be material, including, but not limited to, statements of income and expenses. Consult your attorney, accountant, or other professional advisor. All Kidder Mathews designs are the sole property of Kidder Mathews. Branded materials and layouts are not authorized for use by any other firm or person.



33161 CAMINO CAPISTRANO, SUITE B1 FLOOR PLAN



Available Now



±535 SF
AVAILABLE

NOW
AVAILABLE

KIDDER.COM

This information supplied herein is from sources we deem reliable. It is provided without any representation, warranty, or guarantee, expressed or implied as to its accuracy. Prospective Buyer or Tenant should conduct an independent investigation and verification of all matters deemed to be material, including, but not limited to, statements of income and expenses. Consult your attorney, accountant, or other professional advisor. All Kidder Mathews designs are the sole property of Kidder Mathews. Branded materials and layouts are not authorized for use by any other firm or person.

