

AVAILABLE FOR LEASE

HISTORIC BUILDING
IN THE HEART OF LODO

1743

WAZEE STREET

DENVER, CO



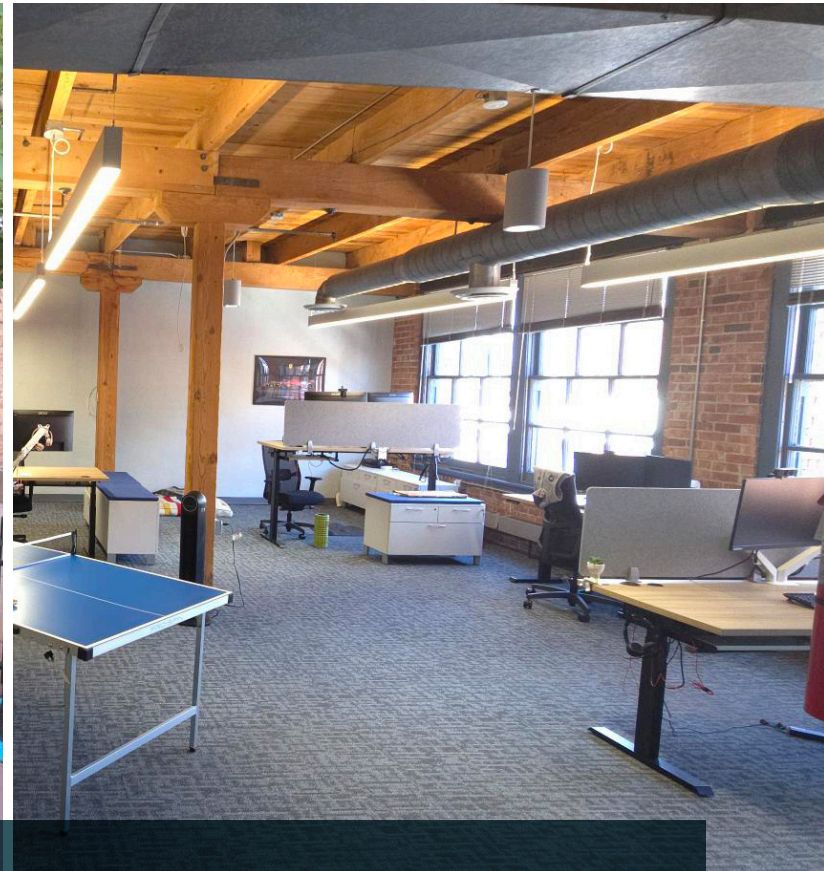
CBRE

1743

WAZEE STREET

AVAILABLE FOR LEASE

DENVER, CO



DETAILS



Year Built: 1900



Floors: (4) Four



Building Size: 41,250 SF



Asking Rate: \$27.50/SF NNN



Operating Expenses: \$11.25/SF

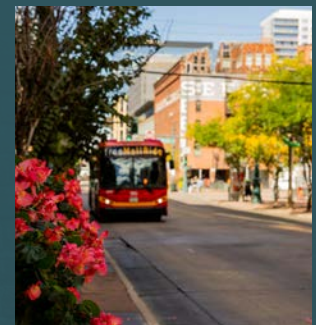


Parking: 0.63/1,000 SF

HIGHLIGHTS



**One block from
Union Station**



**Two blocks from
16th Street Shuttle**



**Easy Access
to I-25**



**Numerous
Walkable
Amenities**



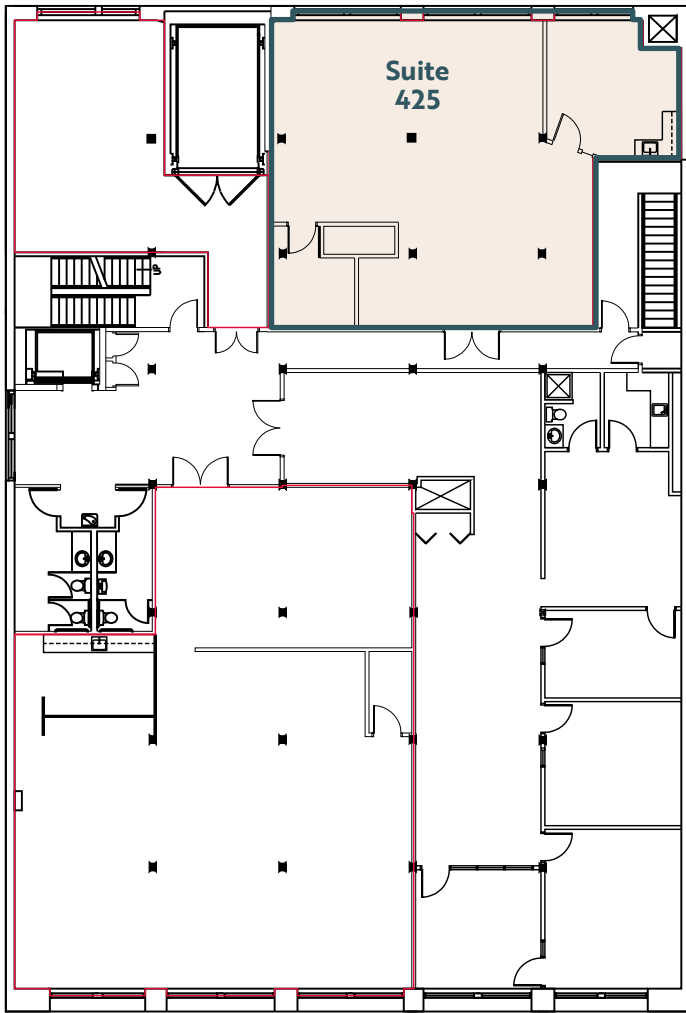
**Exposed
Brick & Timber**

1743
WAZEE STREET

AVAILABLE FOR LEASE

DENVER, CO

FLOOR PLAN



AVAILABILITIES

» Suite 425: 1,561 SF



1743

WAZEE STREET

AVAILABLE FOR LEASE

DENVER, CO

AREA AMENITIES



For More Information, Please Contact:

Blake Holcomb
First Vice President
+1 (303) 583-2022
blake.holcomb@cbre.com

Brian Hutt
First Vice President
+1 (303) 583-2041
brian.hutt@cbre.com

Allison Berry
Vice President
+1 (202) 531-3931
allison.berry@cbre.com

2026 CBRE, Inc. All rights reserved. This information has been obtained from sources believed reliable but has not been verified for accuracy or completeness. You should conduct a careful, independent investigation of the property and verify all information. Any reliance on this information is solely at your own risk. CBRE and the CBRE logo are service marks of CBRE, Inc. All other marks displayed on this document are the property of their respective owners, and the use of such logos does not imply any affiliation with or endorsement of CBRE. Photos herein are the property of their respective owners. Use of these images without the express written consent of the owner is prohibited.

