



SOCIETY
Atlanta

811 PEACHTREE

MIDTOWN ATLANTA

ESTD 2020
BRIDGER
PROPERTIES

PROPERTY DETAILS

OFFICE

90,000 RSF

GROUND LEVEL
RETAIL

14,500 RSF

APARTMENTS

460 UNITS



- LOCATED IN MIDTOWN, ATLANTA, A HIGHLY COVETED RETAIL OFFICE & RESIDENTIAL SUBMARKET
- CLOSE PROXIMITY TO GEORGIA TECH, PIEDMONT PARK & PONCE CITY MARKET

MIXED-USE PROJECT CONTAINING 460 APARTMENTS AND 90,000 RSF OF CLASS A OFFICE SPACE



RETAIL OPPORTUNITY

SIZE 736 - 14,500 SF

CEILING HEIGHT 20'

POSSESSION Q3 2024

FRONTAGE PEACHTREE ST.
& 6TH ST. NE

- RETAIL SPACE IS SITUATED ON PEACHTREE STREET WITH INCREDIBLE VISIBILITY
- PATIO SEATING AVAILABLE FOR RESTAURANT USES
- EXPANSIVE CLEAR GLASS STOREFRONTS



AREA MAP



DRIVE TIMES



Piedmont Park
3 MINUTES

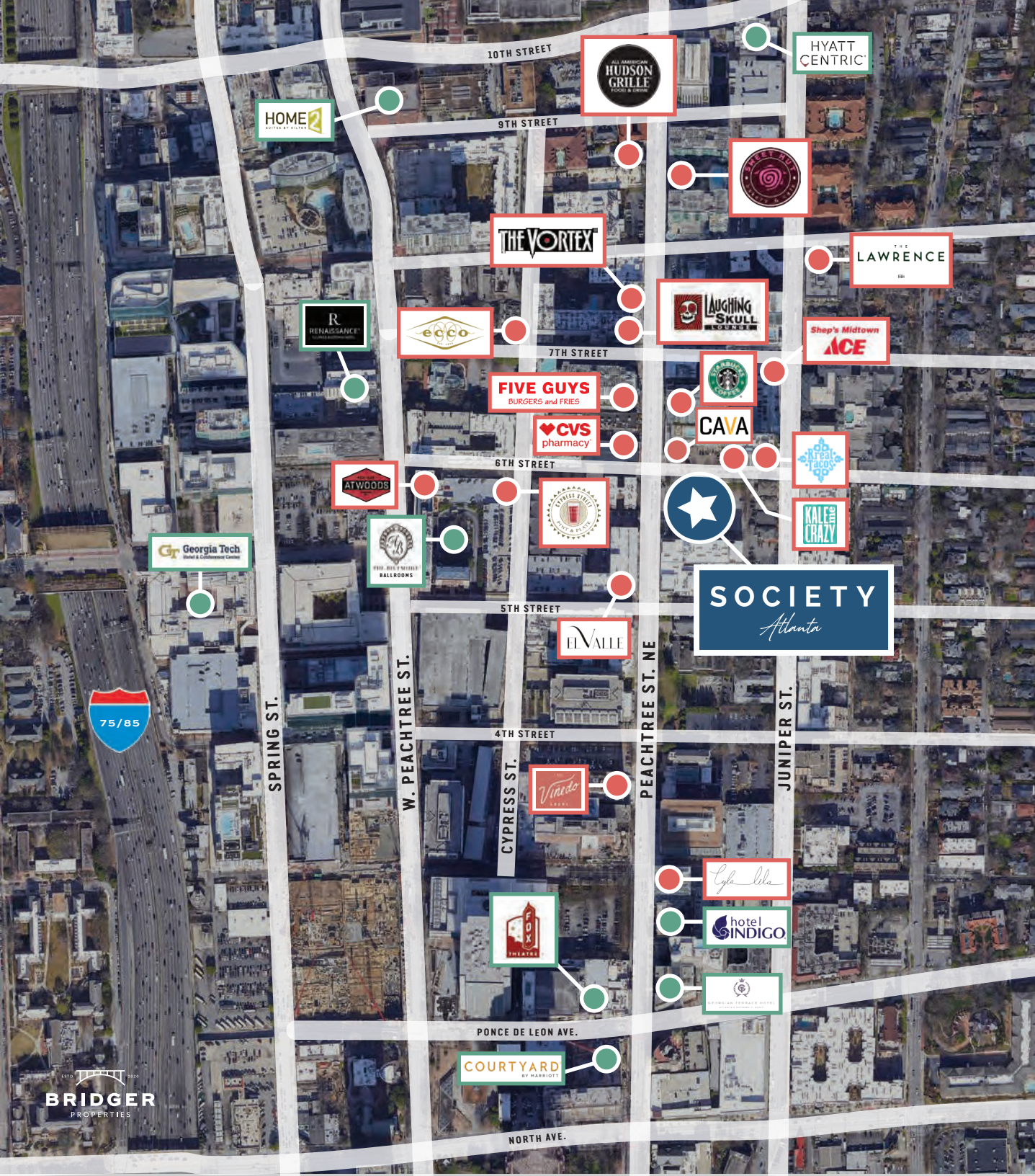
Ponce City Market
5 MINUTES

Georgia Tech
3 MINUTES

Downtown Atlanta
6 MINUTES

Atlantic Station
5 MINUTES

Westside Atlanta
6 MINUTES



SOCIETY
Atlanta

COURTYARD
BY HARRIOTT

2022 DEMOGRAPHICS



DAYTIME POPULATION
(2-MILE RADIUS)

216,773

30,000

NEW RESIDENTS IN
10 YEARS

SPENDING POWER

\$940M



150+

RESTAURANTS

MEDIAN AGE

36.3



ANNUAL RETAIL SALES

\$540M

2 miles from

Population	110,907
Average HH Income	\$118,639
Total Consumer Spending	\$1,738,681,412

5 miles

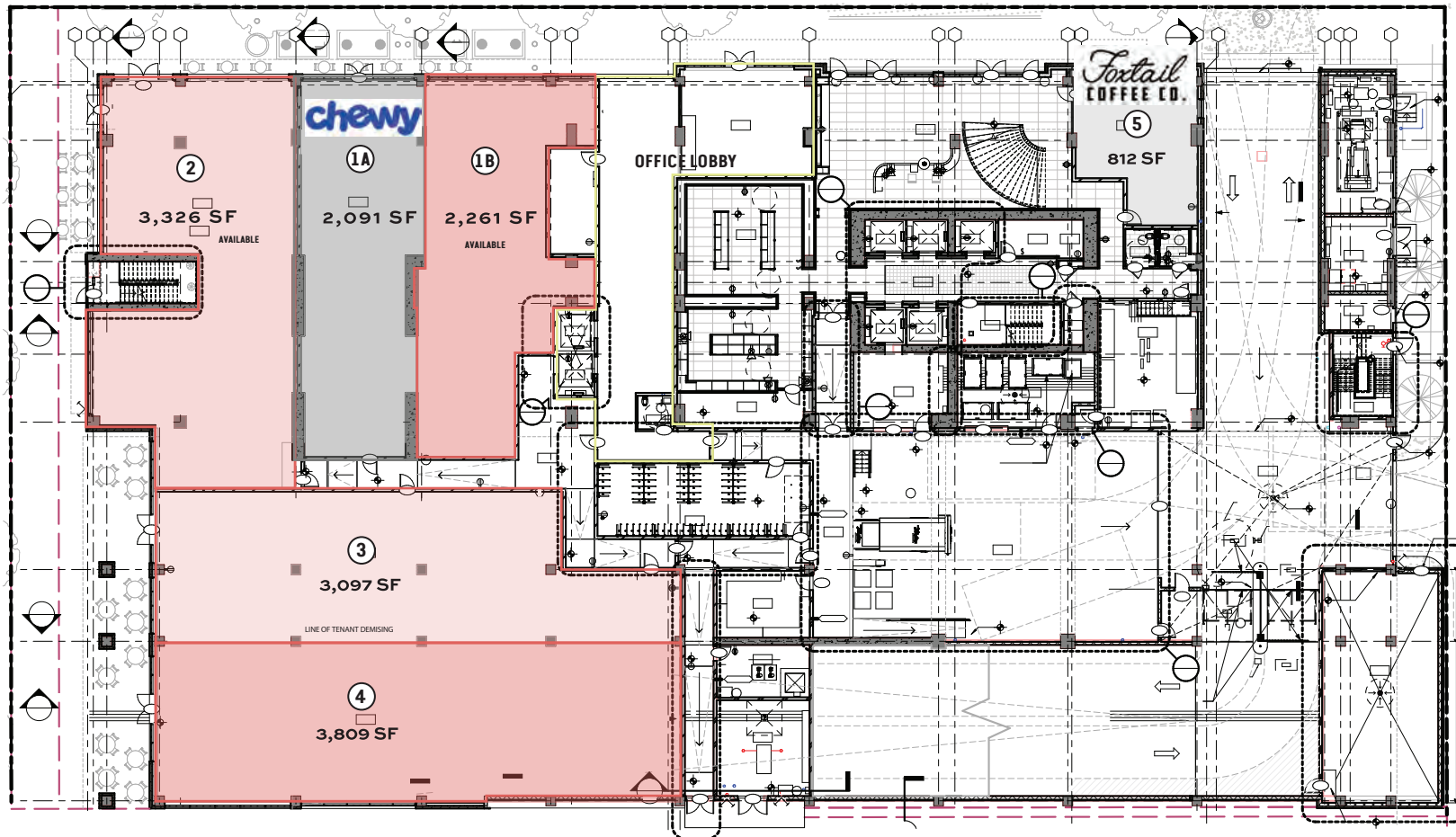
Population	416,549
Average HH Income	\$113,821
Total Consumer Spending	\$5,934,753,045

10 miles

Population	1,081,791
Average HH Income	\$103,948
Total Consumer Spending	\$14,102,390,393



LEVEL 1





SOCIETY LIVING





LEASING INFO

SHELBI
BODNER

SHELBI.BODNER@BRIDGER-PROPERTIES.COM

770.778.0197

ESTD 2020

BRIDGER
PROPERTIES