

# ±347.15 ACRES FOR SALE

## NWC SELMA HIGHWAY & TREKELL ROAD | PINAL COUNTY, ARIZONA

### LOCATION

The Property is located at the northwest corner of Selma Highway & Trekell Road, Pinal County, Arizona

### SIZE

±347.15 Acres

### PRICE

Submit

### ZONING

GR, Pinal County

### UTILITIES

Water - Arizona Water Company  
Sewer - City of Casa Grande  
Electric - APS  
Gas - Southwest Gas

### IRRIGATION

Property is located in the San Carlos Irrigation District. [Click here to view the Water Rights.](#)

### PARCELS

507-11-008, 507-15-003, 507-15-007,  
507-15-009

### TAXES

\$28,721.86 (2022)

Subject

### CONTACT FOR MORE INFORMATION

Kirk P. McCarville, CCIM  
kmccarville@landadvisors.com  
520.251.0348

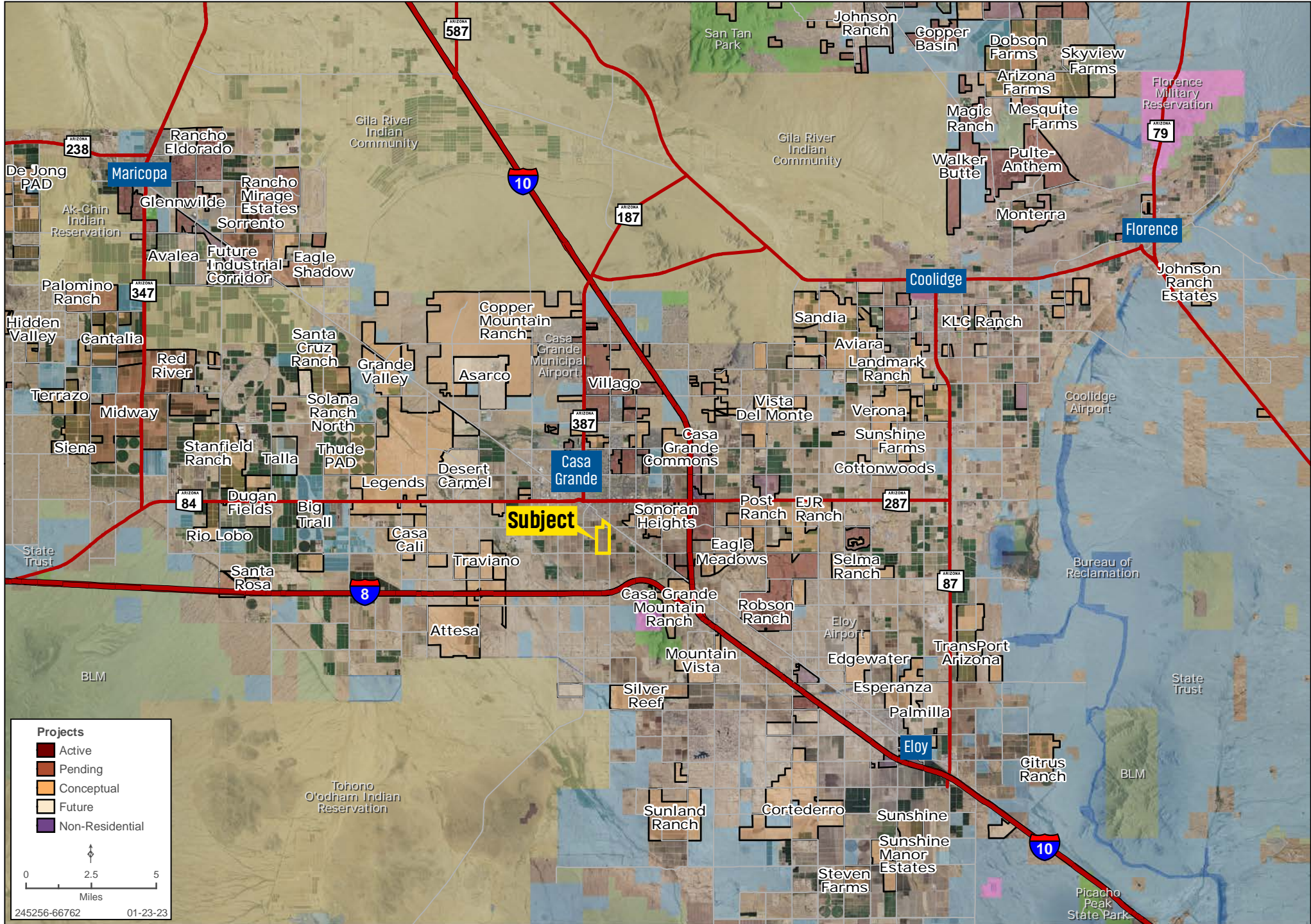
Trey Davis  
tdavis@landadvisors.com  
602.363.3901

 Land Advisors<sup>®</sup>  
ORGANIZATION

520.251.0348 | LandAdvisors.com

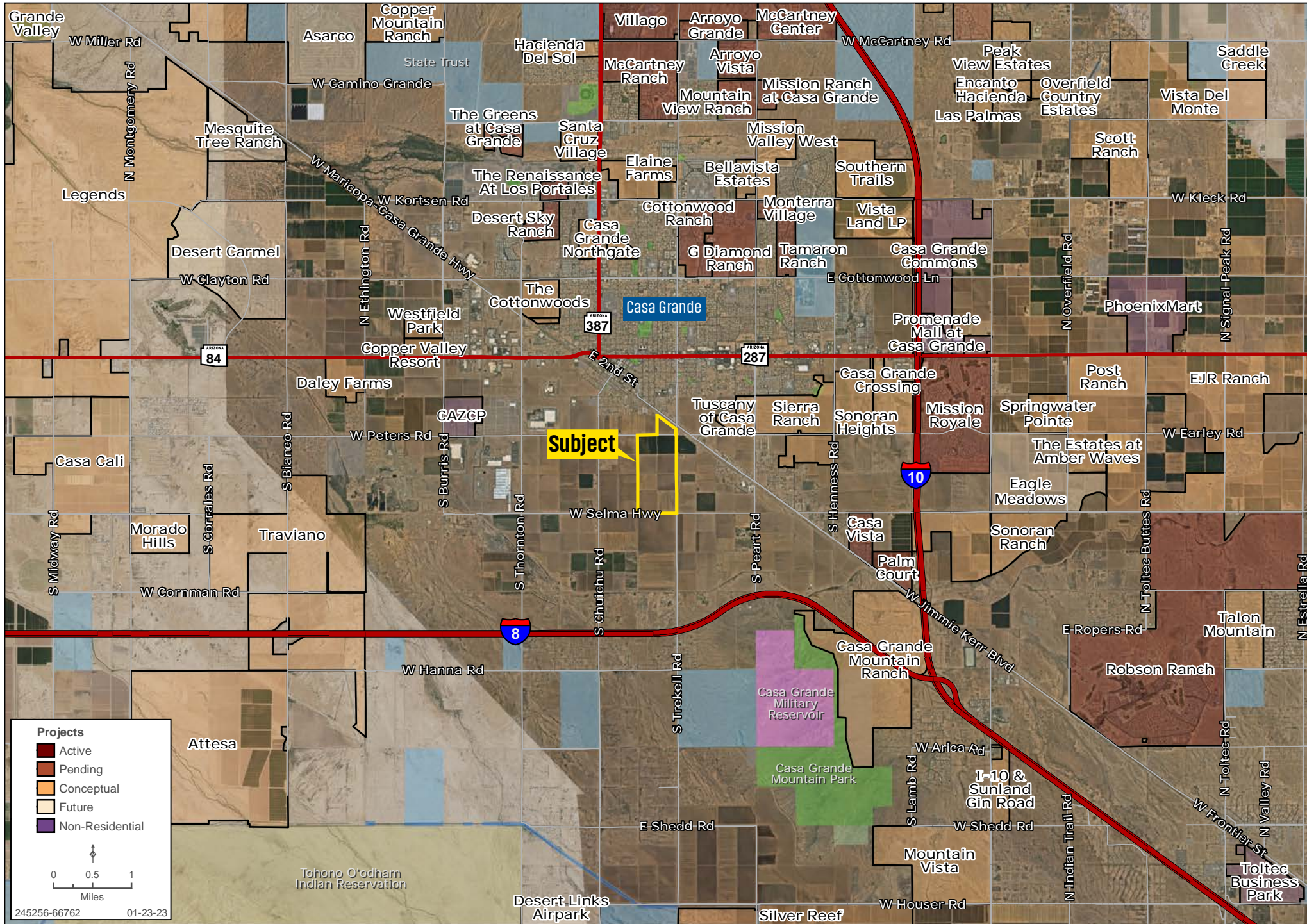
# REGIONAL MAP

Kirk P. McCarville, CCIM | Trey Davis | 520.251.0348 | www.landadvisors.com



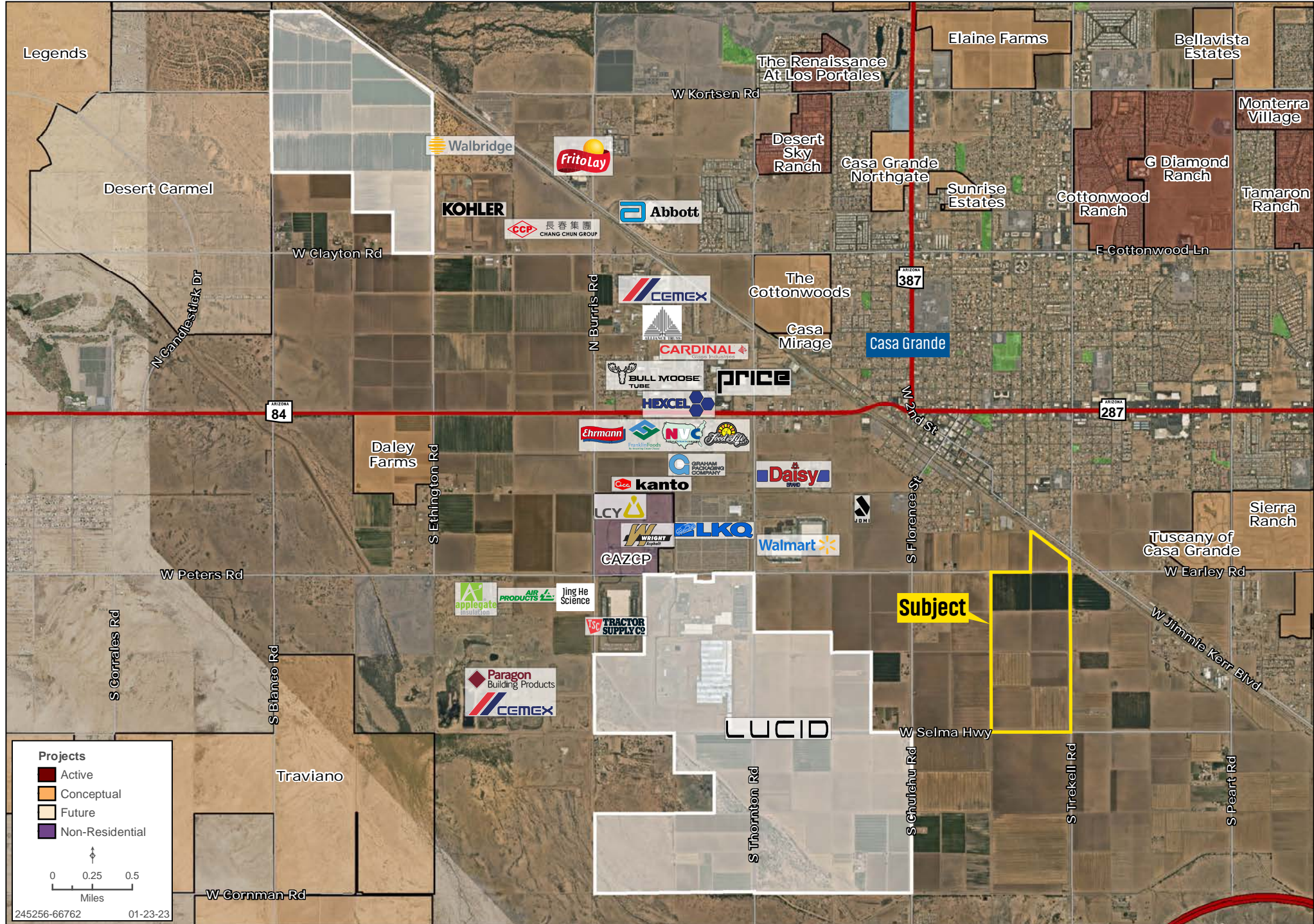
# DEVELOPMENT MAP

Kirk P. McCarville, CCIM | Trey Davis | 520.251.0348 | www.landadvisors.com



# CORPORATE NEIGHBORS MAP

Kirk P. McCarville, CCIM | Trey Davis | 520.251.0348 | www.landadvisors.com



**Projects**

- Active
- Conceptual
- Future
- Non-Residential

0 0.25 0.5  
Miles

245256-66762 01-23-23

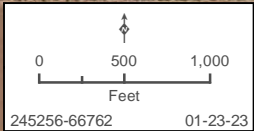
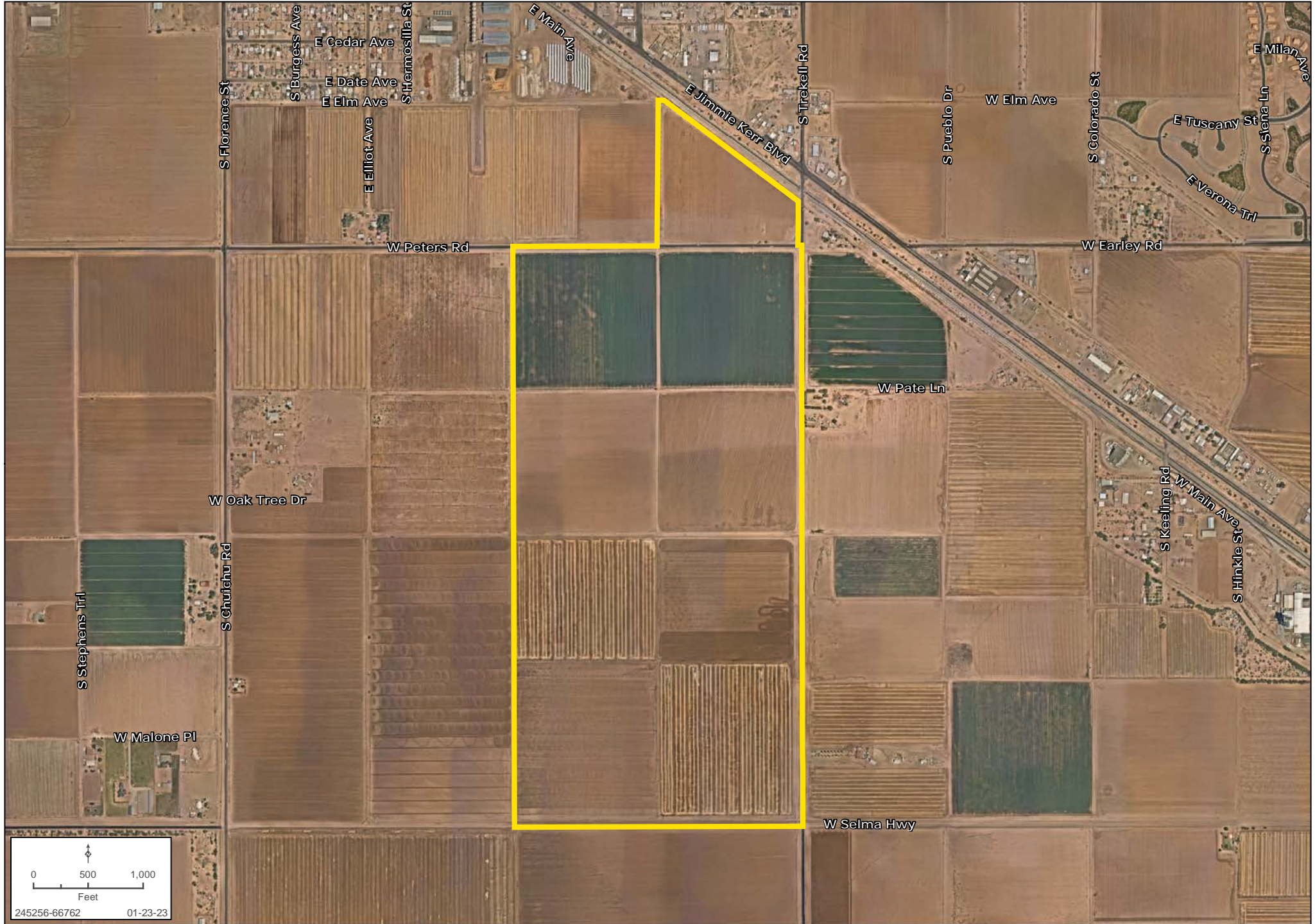
# AREA MAP

Kirk P. McCarville, CCIM | Trey Davis | 520.251.0348 | www.landadvisors.com

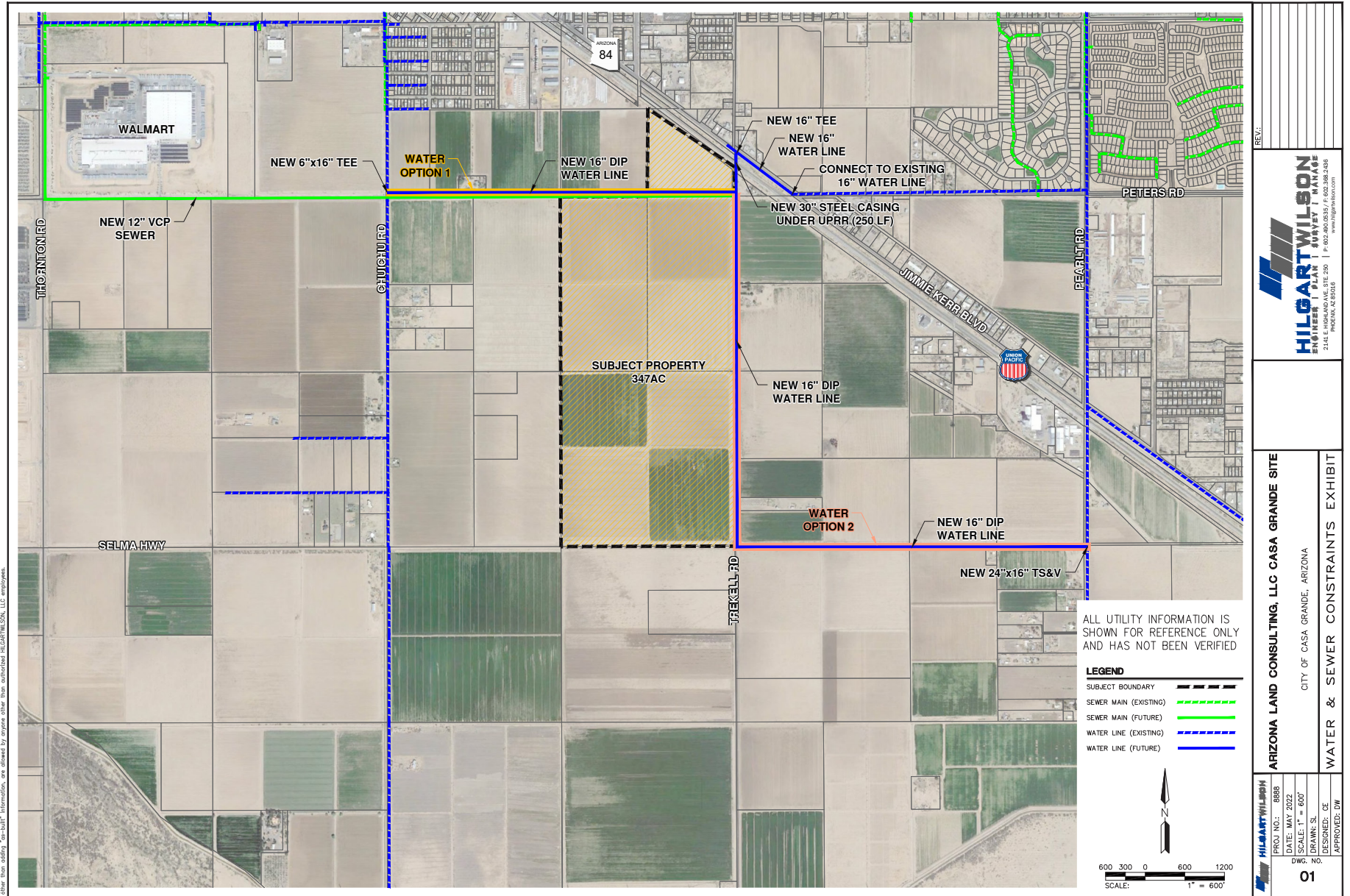


# DETAIL MAP

Kirk P. McCarville, CCIM | Trey Davis | 520.251.0348 | www.landadvisors.com



# WATER & SEWER CONSTRAINTS



Please click here to view the Water & Sewer Constraints Exhibit



The information in this document and any attachments regarding any property has been obtained from sources believed reliable, but we have not verified it and we make no guarantee, warranty, or representation as to its accuracy or completeness, and we do not undertake to update or correct any of the information presented. Any projections, opinions, assumptions, or estimates ("forward-looking statements") used are, for example, only and do not represent the current or future performance of the property and actual results may differ materially from such forward-looking statement due to, without limitation, changes in: (i) the market, (ii) governmental legal, regulatory or permitted use changes, and (iii) other factors. You and your advisors should conduct a careful, independent investigation of the property to determine to your satisfaction the property's suitability for your needs. Any reliance on this information is at your own risk and is subject to change, prior sale or complete withdrawal. AZPinal245256 - 03.21.2024.



[LandAdvisors.com](https://www.LandAdvisors.com)