

## EXCLUSIVE LISTING!

2.0 +/- Acres on Huckleberry Lane- Listed \$1,500,000  
Sloan area of Las Vegas, Nevada 89054



- ✓ APN 191-19-601-004
- ✓ 2 +/- Acres
- ✓ Unincorporated Clark County
- ✓ Planned Land Use –BE- Business Employment-South County Area/  
Sloan
- ✓ Zoned RS80- min lot size 80,000 SF
- ✓ Developing area south of Las Vegas, next to Henderson communities of Inspirada, near Henderson Executive Airport, and the Las Vegas Raiders Practice Stadium.
- ✓ M Resort and Casino is to the north at I-15 and St. Rose Parkway
- ✓ Currently, no utilities in the area available



**Mark Anthony Rua**  
**Brokers**

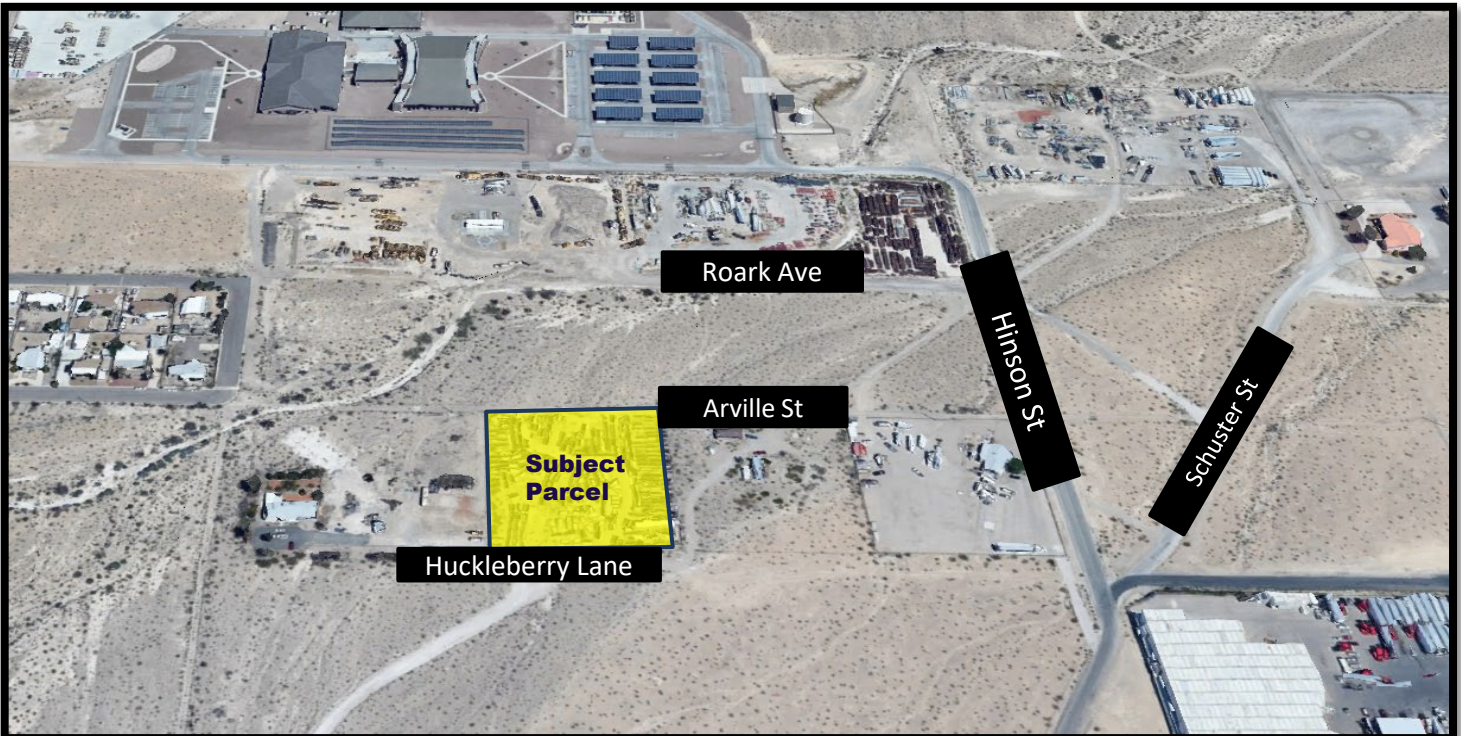
S.026655

Office: 702-992-7534  
Cell: 702-595-6244

2855 St Rose Parkway, Suite 100, Henderson, NV 89052  
[markanthonyrua@gmail.com](mailto:markanthonyrua@gmail.com) [www.mrlandlasvegas.com](http://www.mrlandlasvegas.com)



# 2.0 +/- Acres on Huckleberry Lane



**Mark Anthony Rua**  
**Brokers**

2855 St Rose Parkway, Suite 100, Henderson, NV 89052  
[markanthonyrua@gmail.com](mailto:markanthonyrua@gmail.com) [www.mrlandlasvegas.com](http://www.mrlandlasvegas.com)

Office: 702-992-7534  
Cell: 702-595-6244



The information contained herein is subject to verification and no liability for errors or omissions is assumed. The price, data, and other information are subject to change or the listing may be withdrawn without notice.

## 2.0 +/- Acres on Huckleberry Lane

Directions:  
South on I-15 to Sloan Road Exit,  
west to Huckleberry Trail, make a  
right and the road goes straight  
to the Parcel.

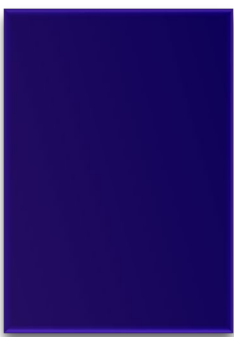
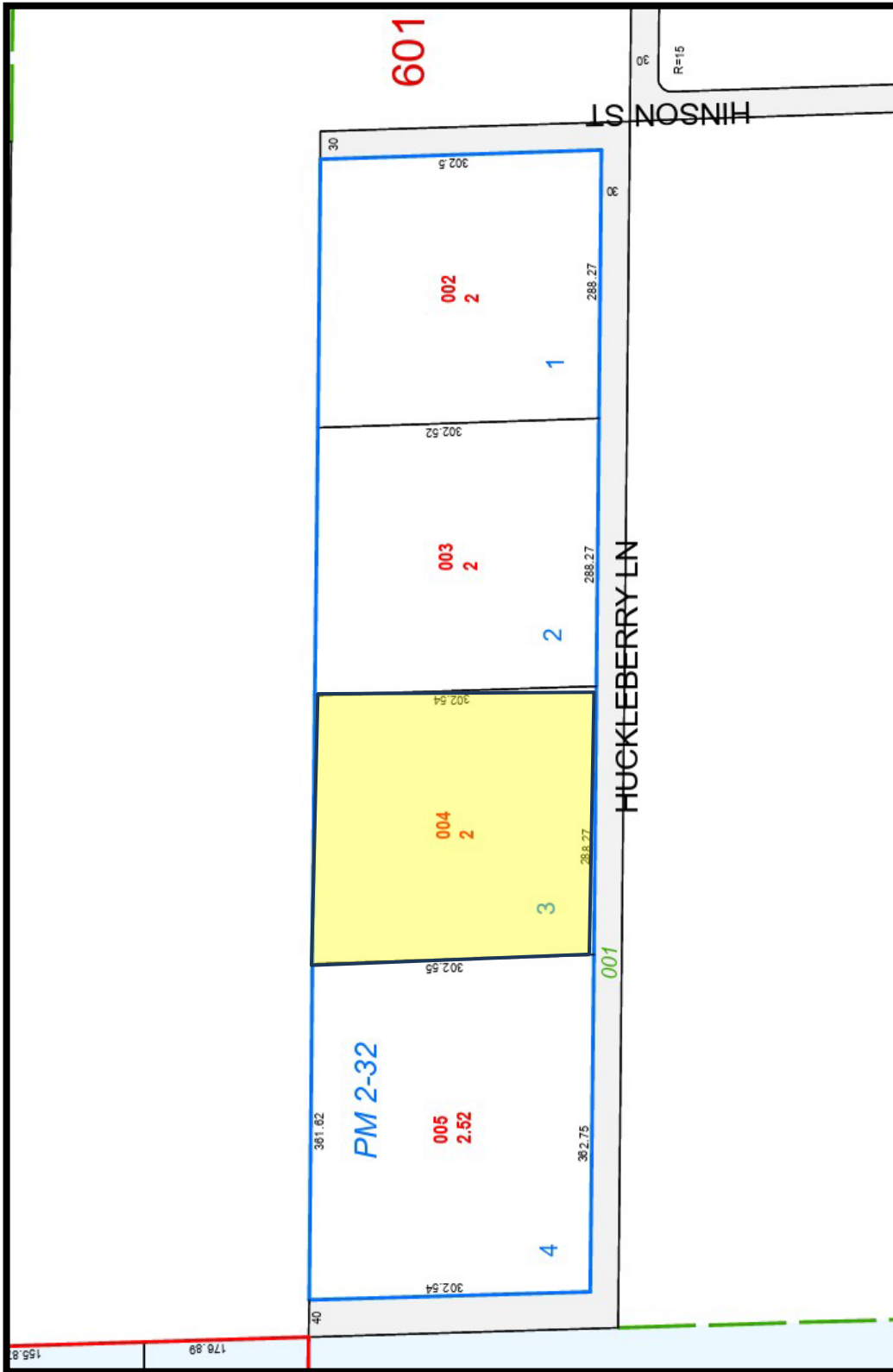


**Mark Anthony Rua**  
**Brokers**

2855 St Rose Parkway, Suite 100, Henderson, NV 89052  
[markanthonyrua@gmail.com](mailto:markanthonyrua@gmail.com) [www.mrlandlasvegas.com](http://www.mrlandlasvegas.com)

Office: 702-992-7534  
Cell: 702-595-6244





2.0 +/- Acres on Huckleberrry Lane



**Mark Anthony Rua**  
**Brokers**

2855 St Rose Parkway, Suite 100, Henderson, NV 89052  
[markanthonyrua@gmail.com](mailto:markanthonyrua@gmail.com) [www.mrlandlasvegas.com](http://www.mrlandlasvegas.com)

Office: 702-992-7534  
 Cell: 702-595-6244



The information contained herein is subject to verification and no liability for errors or omissions is assumed. The price, data, and other information are subject to change or the listing may be withdrawn without notice.