

REDUCED RATE

\$3.45/SF

\$0.83 ESTIMATED NNN

±143,000 SF AVAILABLE

101 GROUCE ROAD

FOR SUBLEASE

FLEXIBLE TERM LENGTH
IDEAL FOR 3PL OR LOGISTICS COMPANY

PRESENTED BY:

Randall Bentley, SIOR, CCIM
President/Managing Principal
864.444.2842
rbentley@lee-associates.com

Micah Williams
Senior Vice President
864.477.0455
mwilliams@lee-associates.com

**INCREDIBLE
CLEAR HEIGHT**



CONFIDENTIAL DISCLAIMER

This package contains selected information pertaining to the Property and does not purport to be a representation of the state of affairs of the Property or the Owner, to be all-inclusive or to contain all or part of the information which prospective investors may require to evaluate a purchase of real property. All references to acreages, square footages, and other measurements are approximations. Additional information and an opportunity to inspect the Property will be made available to any interested persons. In this package, certain documents are described in summary form. These summaries do not purport to be complete nor necessarily accurate descriptions of the material referenced. Interested parties are expected to review all such summaries and other documents of whatever nature independently and not rely on the contents of this package in any manner.

Neither the Owner or Lee & Associates-Greenville/Spartanburg nor any of their respective officers, directors, employees, affiliates or representatives make any representation or warranty, express or implied, as to the accuracy or completeness of this Memorandum or any of its contents, and no legal commitment or obligation shall arise by reason of your receipt of this package or use of its contents; and you are to rely solely on your investigations and inspections of the Property in evaluating a possible purchase of the real property.

The Owner expressly reserves the right, at its sole discretion, to reject any and all expressions of interest or offers to purchase the Property, and/or to terminate discussions with any entity at any time with our without notice which may arise as a result of review of this package. The Owner shall have no legal commitment or obligation to any person reviewing this package or making an offer to purchase the Property unless and until written agreement(s) for the purchase of the Property have been fully executed, delivered and approved by the Owner and any conditions to the Owner's obligations therein have been satisfied or waived.

TABLE OF CONTENTS

3 *PROPERTY OVERVIEW*
HIGHLIGHTS

4 *PROPERTY OVERVIEW*
SPECIFICATIONS

6 *PROPERTY OVERVIEW*
LOCATION

8 *PROPERTY OVERVIEW*
PHOTOS

9 *PROPERTY OVERVIEW*
MSA

10 *PROPERTY OVERVIEW*
YOUR TEAM

PROPERTY OVERVIEW

PROPERTY HIGHLIGHTS



Covered Docks

5 Covered Docks



Zoned GI (General Industrial)

Offering businesses a broad range of possibilities.



Dock Equipment

Equipped with pit levelers on all 5 docks, ensuring smooth and efficient loading and unloading operations.



Prime Location & Access

Strategically situated. Just 2.8 miles from I-85, 5.4 miles from BMW, and 5.6 miles from the SC Inland Port.



Clear Height

With clear heights of 38' in the bottom level, this property offers ample vertical space for a variety of industrial uses.



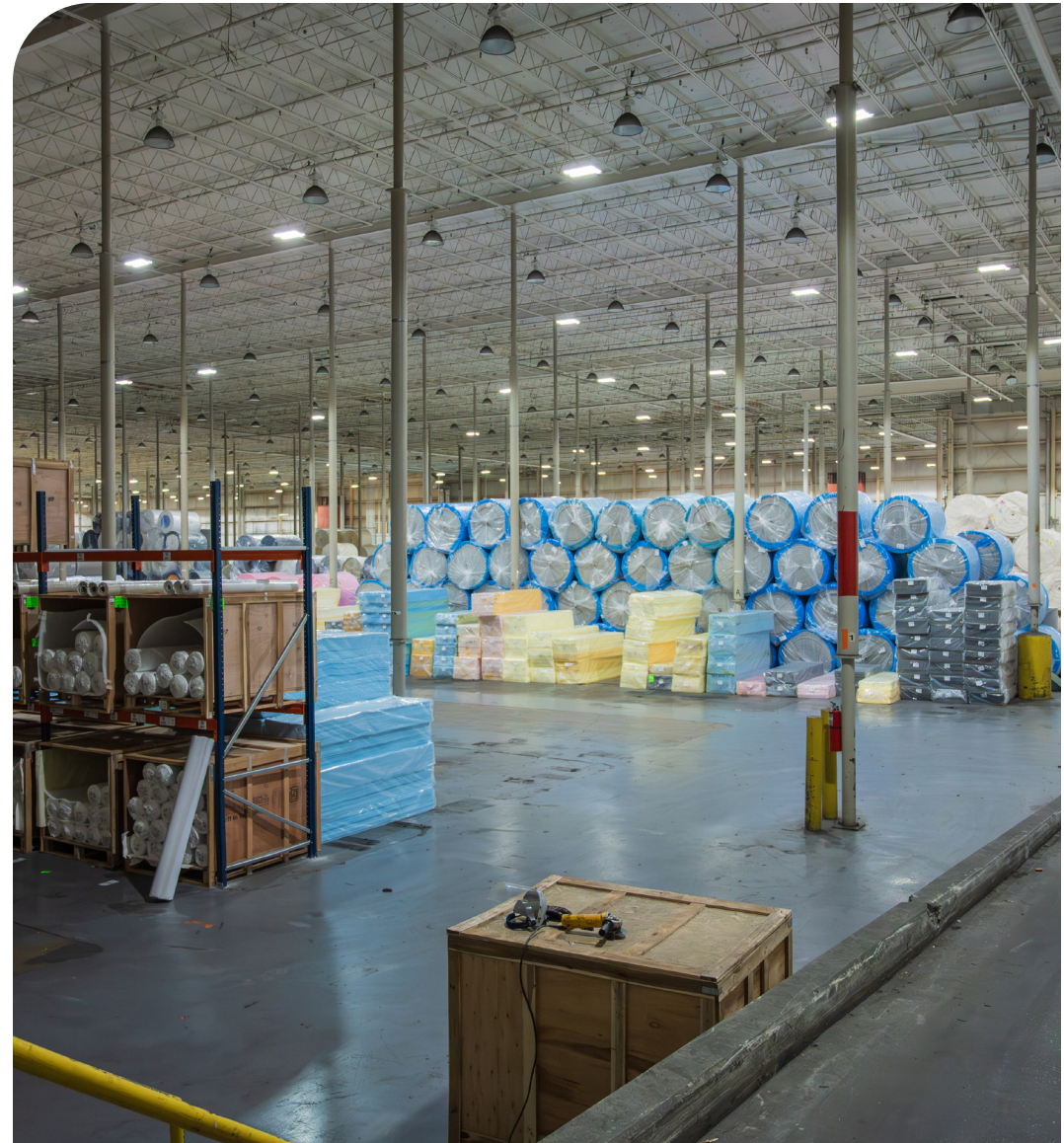
Sprinklers

ESFR Sprinkler System.

PROPERTY OVERVIEW

PROPERTY SPECIFICATIONS - OVERVIEW

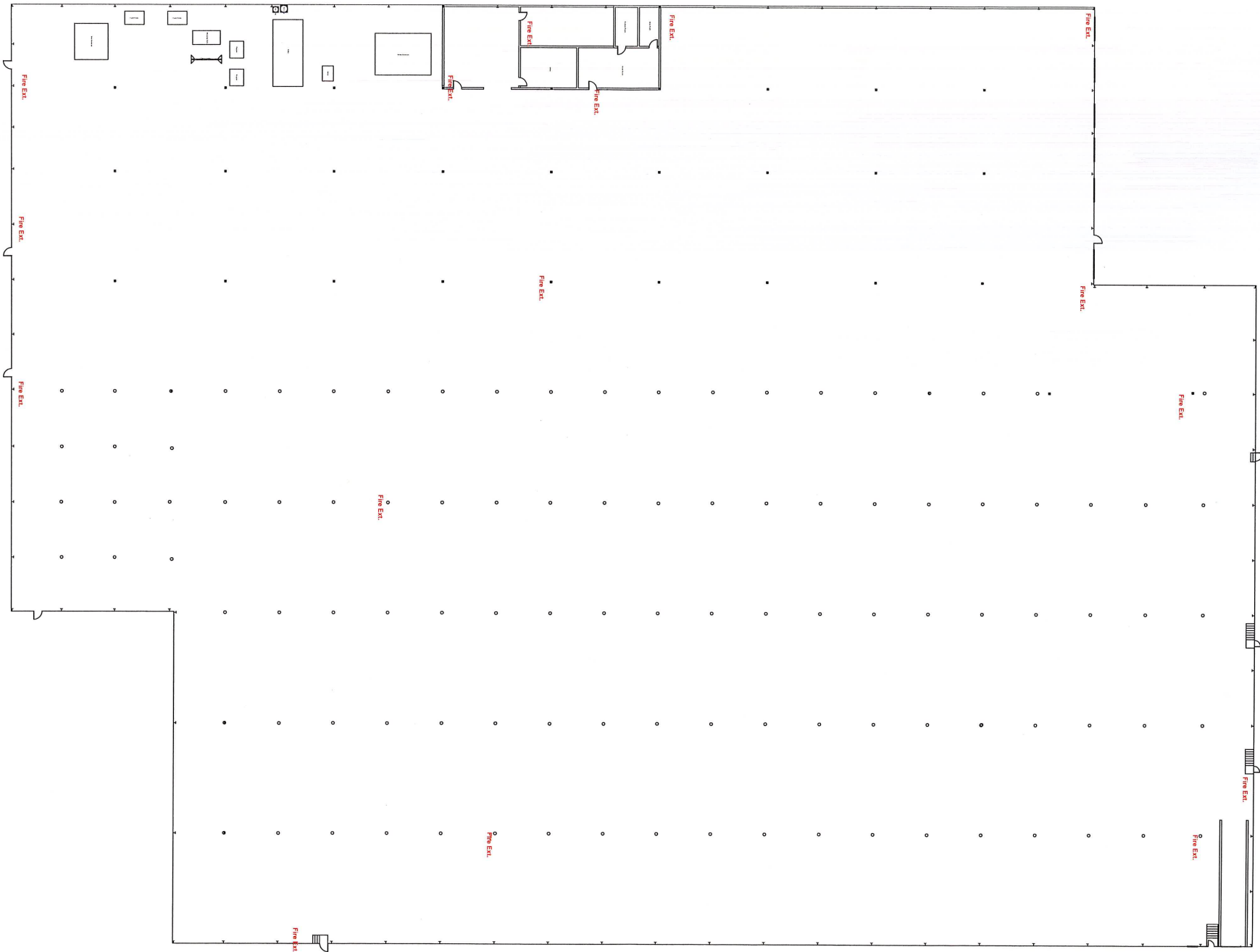
SECTION AVAILABLE SF	±143,000 SF
TOTAL BUILDING SF	±449,000 SF
WAREHOUSE SF	±141,500
OFFICE SF	±1,500 SF
CLEAR HEIGHT	38'
COLUMN SPACING	Front: 20' x 40' / Back: 40' x 40'
LIGHTING	LED
SPRINKLERS	ESFR
TAX MAP #	5-15-00-006.12
COUNTY	Spartanburg
CITY LIMITS	Lyman
ZONING	GI (General Industrial)
DOCKS	5 (Five)
DRIVE-INS	1 (One)
CONSTRUCTION	Precast Concrete / Concrete Block
POWER	1,200a/600v 3p Heavy
ROOF	60 mil TPO / Insulated (Installed 2013 - 20 Year Roof)





PROPERTY OVERVIEW

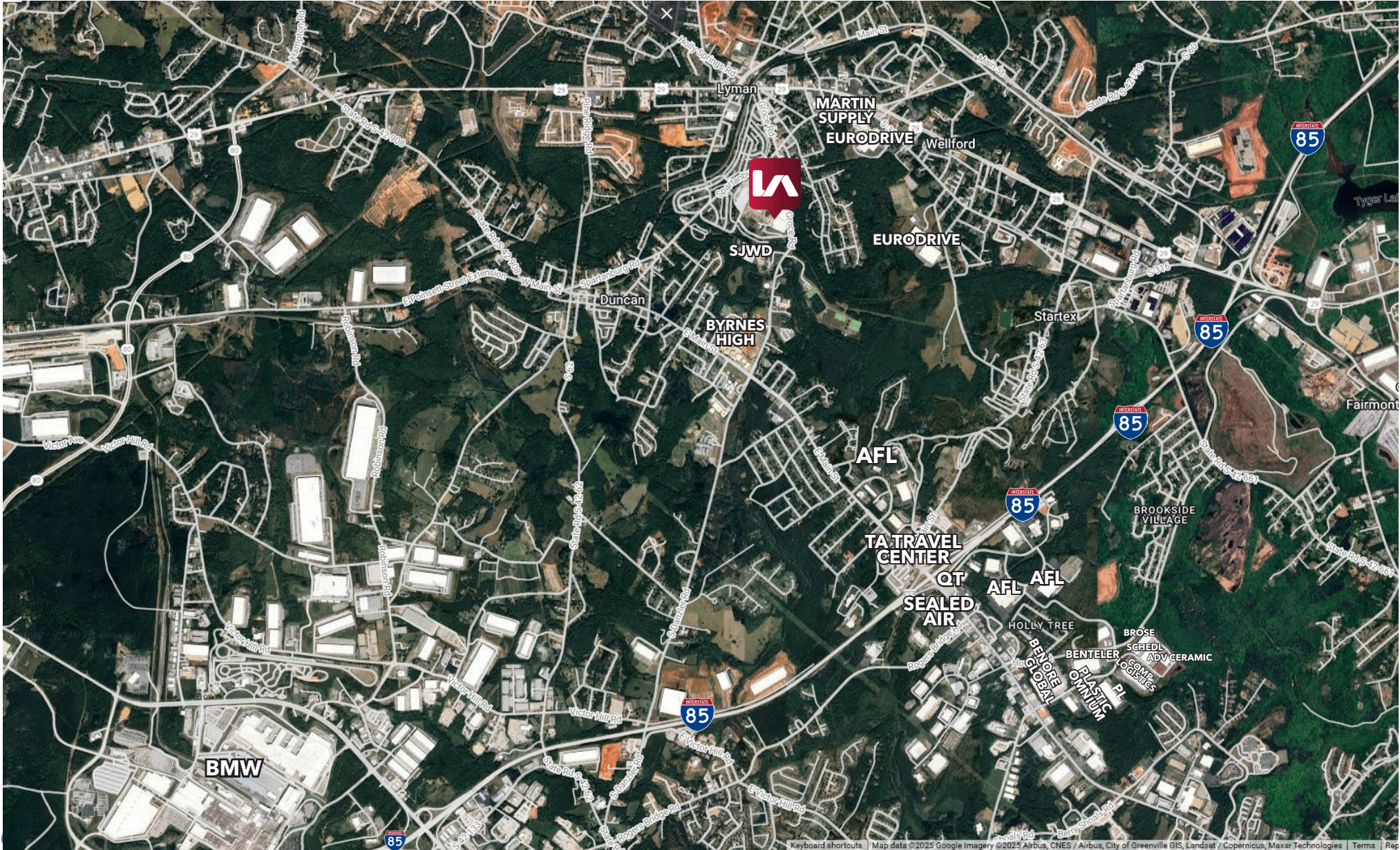
FLOOR PLAN - LOWER LEVEL





PROPERTY OVERVIEW

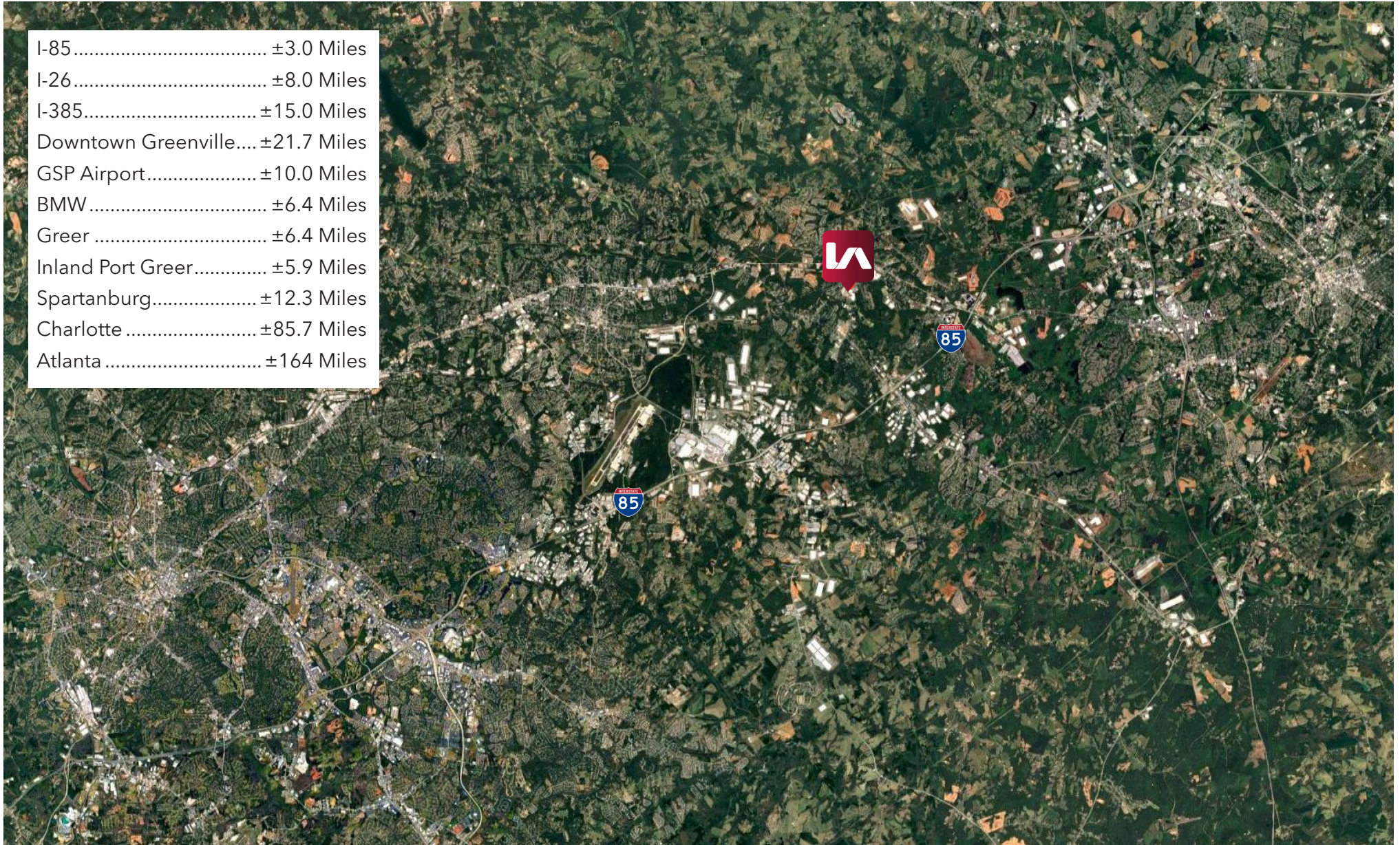
LOCATION MAP - AREA



PROPERTY OVERVIEW

LOCATION MAP | DISTANCE TRACKER

I-85.....	±3.0 Miles
I-26.....	±8.0 Miles
I-385.....	±15.0 Miles
Downtown Greenville....	±21.7 Miles
GSP Airport.....	±10.0 Miles
BMW	±6.4 Miles
Greer	±6.4 Miles
Inland Port Greer.....	±5.9 Miles
Spartanburg.....	±12.3 Miles
Charlotte	±85.7 Miles
Atlanta	±164 Miles



PROPERTY OVERVIEW

PROPERTY PHOTOS





PROPERTY OVERVIEW

GREENVILLE | ANDERSON | GREER MSA

The Greenville, Anderson, and Greer Metropolitan Statistical Area (MSA) is a dynamic and thriving region in the Upstate of South Carolina, offering a strong, diversified economy and an ideal location for business growth. Situated at the crossroads of key interstate highways, including I-85 and I-385, this MSA is recognized for its strategic access to both domestic and international markets, making it a hub for manufacturing, logistics, and distribution.

BUSINESS CLIMATE AND GROWTH

The Greenville-Anderson-Greer MSA is home to a robust business climate, driven by its diverse industrial base. The area benefits from its proximity to major global companies, including BMW, Michelin, and GE Energy, as well as a growing number of smaller businesses and startups. The MSA's competitive operating costs, skilled workforce, and business-friendly environment attract companies from various sectors, including automotive, advanced manufacturing, logistics, healthcare, and technology.

LOGISTICS AND TRANSPORTATION

One of the key advantages of the Greenville-Anderson-Greer MSA is its strategic location along critical transportation corridors. The MSA is situated within easy reach of I-85, which runs north-south from Alabama to the northeastern U.S., and I-385, which connects to other major highways, making it a prime location for warehousing, distribution, and transportation-based businesses. The region also benefits from the nearby South Carolina Inland Port, offering direct access to the Port of Charleston, enhancing its appeal for companies involved in international trade and logistics.

QUALITY OF LIFE

Beyond its economic advantages, the MSA offers an exceptional quality of life. The region is known for its scenic beauty, with easy access to the Blue Ridge Mountains and numerous outdoor recreational activities, including hiking, boating, and fishing. The area also features a vibrant downtown, with a mix of historic charm and modern amenities, as well as excellent schools, healthcare facilities, and cultural events. This combination of business opportunity and quality living makes the MSA an attractive destination for both businesses and residents.

Workforce Development

The MSA is supported by a strong workforce, with a large pool of skilled workers in manufacturing, engineering, logistics, and other high-demand industries. The region is home to several higher education institutions, including Clemson University and Furman University, which offer advanced programs in engineering, business, and technology. Additionally, the area boasts a robust network of vocational and technical training programs that help ensure businesses can access a highly qualified labor force.

REAL ESTATE MARKET

The real estate market throughout the MSA has experienced significant growth in recent years. Industrial and commercial properties are in high demand, with many new developments and renovations taking place to meet the needs of expanding businesses. The area's affordable land prices and available spaces for lease or purchase make it an attractive option for companies seeking to expand or relocate.



LEARN MORE
GIVE US A CALL



Randall Bentley, SIOR, CCIM
President/ Managing Principal
864.444.2842
rbentley@lee-associates.com



Micah Williams
Senior Vice President
864.477.0455
mwilliams@lee-associates.com

\$3.45/SF
\$0.83 Estimated NNN

