



6,020 - 23,038 SF AVAILABLE NOW

5335 Dividend Drive

SUITES A & B | DECATUR, GA 30035

OWNED BY:

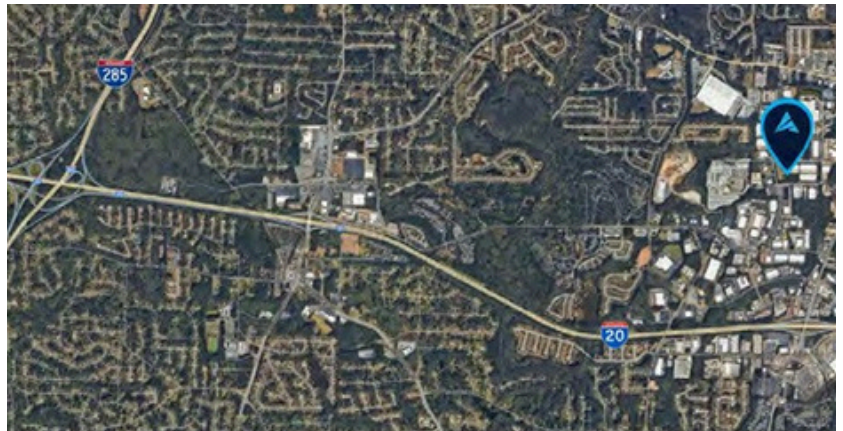


FOR SUBLEASE



PROPERTY INFORMATION

Total Size: 6,020 - 23,038 SF
Office: 4,300 SF
Warehouse: 18,738 SF
Term: Sublease through 7/31/2027
Loading: Seven (7) Dock High Doors
One (1) Drive-In Door
Clear Height: 26'
Location: +/- 1.2 miles to I - 20
+/- 4.8 miles to I - 285



For more information, please contact:

JEREMIAH ALLEN

Office: (770) 264 - 9421
Cell: (404) 747 - 4971
jallen@apexindustrialre.com

ANDY HEAD

Office: (404) 595 - 1466
Cell: (404) 713 - 4601
ahead@apexindustrialre.com



Although the information contained therein was provided from sources believed to be reliable, Apex Industrial makes no representation, expressed or implied, as to its accuracy and said information is subject to errors, omissions or changes.



17,018 SF AVAILABLE NOW

5335 Dividend Drive

SUITE A | DECATUR, GA 30035

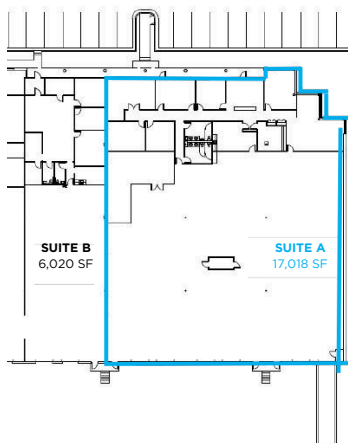
OWNED BY:



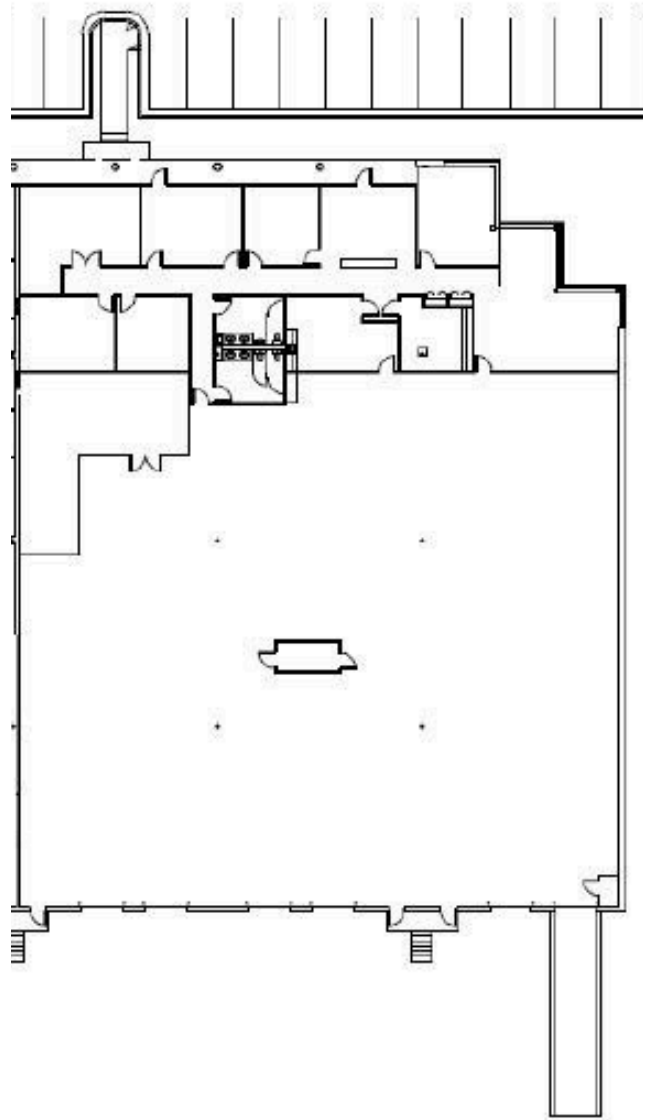
PROPERTY INFORMATION

Total Size: 17,018 SF
Office: 3,100 SF
Warehouse: 13,198 SF
Term: Sublease through 7/31/2027
Loading: Five (5) Dock High Doors
One (1) Drive-In Door
Clear Height: 26'
Location: +/- 1.2 miles to I - 20
+/- 4.8 miles to I - 285

KEYPLAN



FLOORPLAN



For more information, please contact:

JEREMIAH ALLEN

Office: (770) 264 - 9421
Cell: (404) 747 - 4971
jallen@apexindustrialre.com

ANDY HEAD

Office: (404) 595 - 1466
Cell: (404) 713 - 4601
ahead@apexindustrialre.com



Although the information contained therein was provided from sources believed to be reliable, Apex Industrial makes no representation, expressed or implied, as to its accuracy and said information is subject to errors, omissions or changes.



6,020 SF AVAILABLE NOW

5335 Dividend Drive

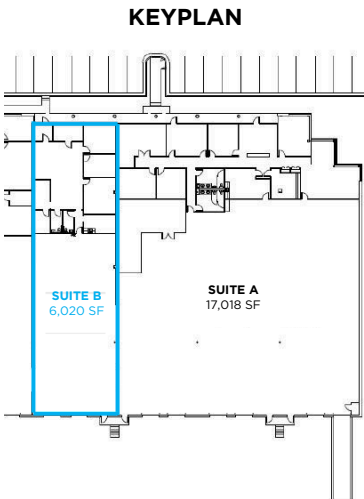
SUITE B | DECATUR, GA 30035

OWNED BY:

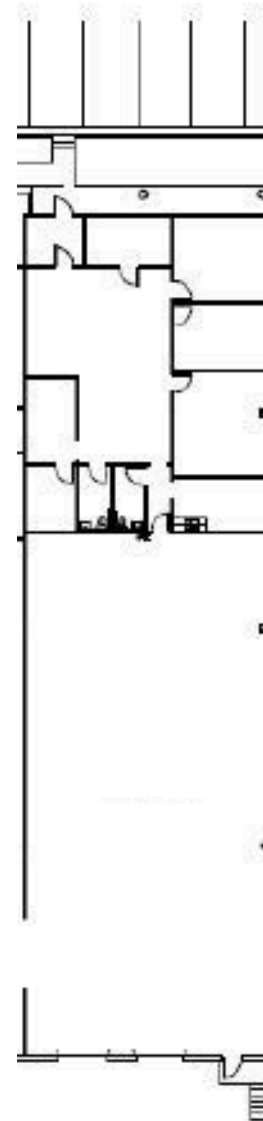
Dalfen
INDUSTRIAL

PROPERTY INFORMATION

Total Size: 6,020 SF
Office: 1,200 SF
Warehouse: 4,820 SF
Term: Sublease through 7/31/2027
Loading: Two (2) Dock High Doors
Clear Height: 26'
Location: +/- 1.2 miles to I - 20
+/- 4.8 miles to I - 285



FLOORPLAN



For more information, please contact:

JEREMIAH ALLEN

Office: (770) 264 - 9421
Cell: (404) 747 - 4971
jallen@apexindustrialre.com

ANDY HEAD

Office: (404) 595 - 1466
Cell: (404) 713 - 4601
ahead@apexindustrialre.com



Although the information contained therein was provided from sources believed to be reliable, Apex Industrial makes no representation, expressed or implied, as to its accuracy and said information is subject to errors, omissions or changes.



6,020 - 23,038 SF AVAILABLE NOW

5335 Dividend Drive

SUITES A & B | DECATUR, GA 30035

EXTERIOR PHOTOS

OWNED BY:



For more information, please contact:

JEREMIAH ALLEN

Office: (770) 264 - 9421
Cell: (404) 747 - 4971
jallen@apexindustrialre.com

ANDY HEAD

Office: (404) 595 - 1466
Cell: (404) 713 - 4601
ahead@apexindustrialre.com



Although the information contained therein was provided from sources believed to be reliable, Apex Industrial makes no representation, expressed or implied, as to its accuracy and said information is subject to errors, omissions or changes.



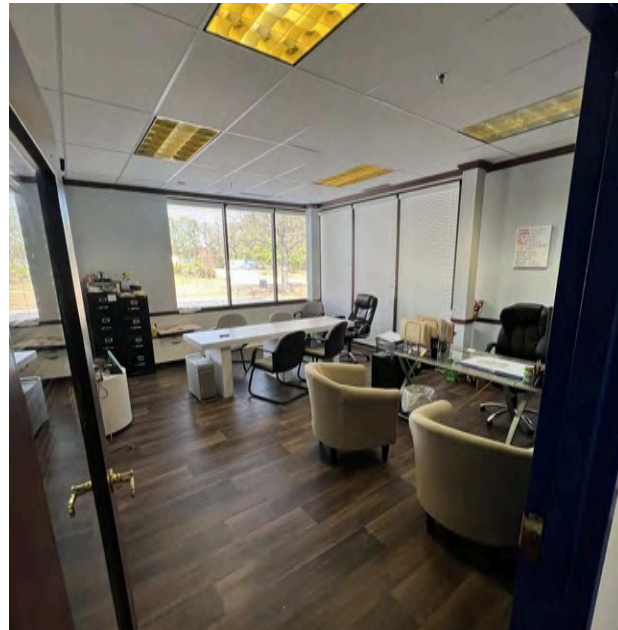
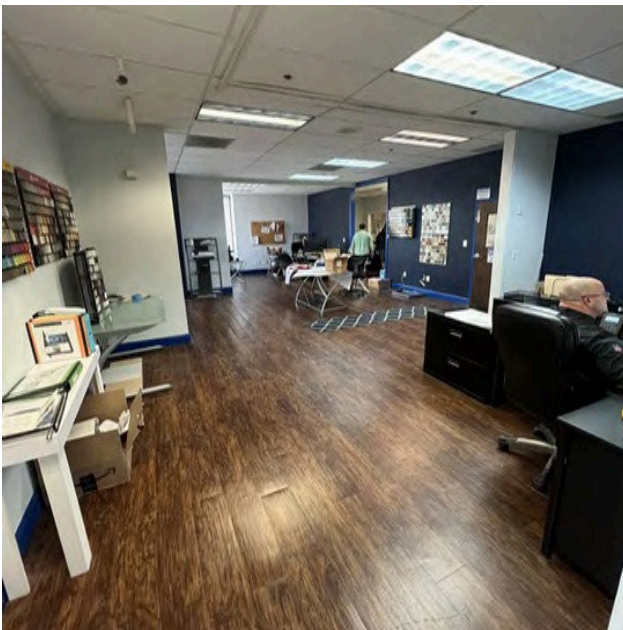
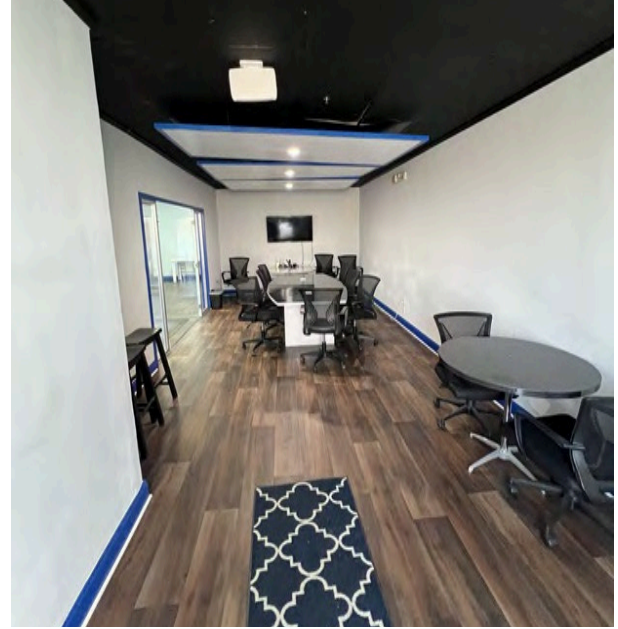
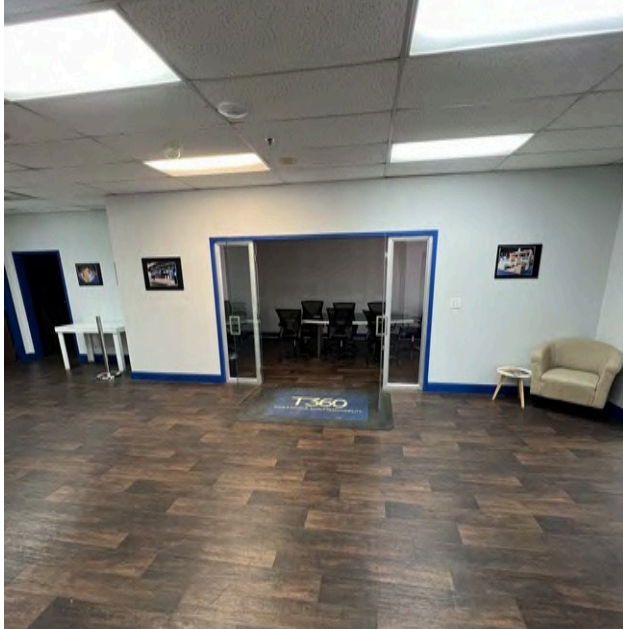
6,020 - 23,038 SF AVAILABLE NOW

5335 Dividend Drive

SUITES A & B | DECATUR, GA 30035

INTERIOR PHOTOS

OWNED BY:



For more information, please contact:

JEREMIAH ALLEN

Office: (770) 264 - 9421
Cell: (404) 747 - 4971
jallen@apexindustrialre.com

ANDY HEAD

Office: (404) 595 - 1466
Cell: (404) 713 - 4601
ahead@apexindustrialre.com



Although the information contained therein was provided from sources believed to be reliable, Apex Industrial makes no representation, expressed or implied, as to its accuracy and said information is subject to errors, omissions or changes.