

# For Lease



# KENMORE VILLAGE SQUARE

6610 NE 181st St, Kenmore, WA 98028

Daniel Smith  
206-550-1131  
danielsmith@robgascare.com

John Rochford  
425-444-2750  
johnrochford@robgascare.com

ROB GASCA  
425-766-3054  
robgasca@robgascare.com



# Executive Summary

Kenmore, Washington located in King County along the northernmost shore of Lake Washington.

- **Economy:** Known for a strong entrepreneurial spirit and is home to Bastyr University, a leading natural medicine institution. Other notable businesses include Kenmore Air, Kenmore Camera (a large photography equipment store), The Lodge at St. Edward Park (a Michelin Key hotel), and a "Brew Row" featuring breweries and a distillery. Professional, Scientific & Technical Services, Health Care & Social Assistance, and Retail Trade are among the largest industries, according to Data USA.
- **Education:** Served by the Northshore School District, known for its academic excellence. Bastyr University and the University of Washington - Bothell Campus are located nearby.
- **Lifestyle:** Offers a blend of urban amenities and natural beauty, with opportunities for hiking, biking on the Burke-Gilman Trail, kayaking, and enjoying the Lake Washington waterfront. Log Boom Park, Rhododendron Park, and St. Edward State Park are popular parks. The city is actively revitalizing its downtown area.

Kenmore is a city that balances economic opportunity with access to nature, making it an attractive place for both residents and businesses.

The Bothell/Kenmore office submarket has a vacancy rate of 15.7% as of the third quarter of 2025. Over the past year, the submarket's vacancy rate has changed by 2.9%, a result of no net delivered space and -160,000 SF of net absorption. Average rents in Bothell/Kenmore are roughly \$33.00/SF, compared to the wider Seattle market average of \$36.00/SF.

# Lease Information

## LEASE INFORMATION

**Location 6610 NE 181st St, Kenmore, WA 98028-4867**

**SF Available ±1575 rsf**

**Lease Type NNN**

**Lease Rate \$27.00 psf + NNN**

**This premier medical/professional office space is ideally situated in the vibrant heart of downtown Kenmore. Just two blocks from the scenic north shores of Lake Washington, this property offers unparalleled convenience with close proximity to all essential amenities. Nestled within the developing Kenmore Village Square and only a block away from transit, this location provides an excellent opportunity to capitalize on the dynamic growth of downtown Kenmore. Enhance your business presence and benefit from the thriving community and booming local economy.**

**Use – Medical / Office**



# Kenmore Village Square Property Highlight

## Highlights

- Meticulously Maintained Property
- Updated Roof
- New HVAC
- Pylon Signage
- Resurfaced Asphalt and Re-Striped
- Office/Medical Buildout

## Prime Location

Positioned within the growing Kenmore Village Square, just two blocks from Lake Washington and one block from transit. Enjoy exceptional walkability and easy access to dining, services, and recreation.

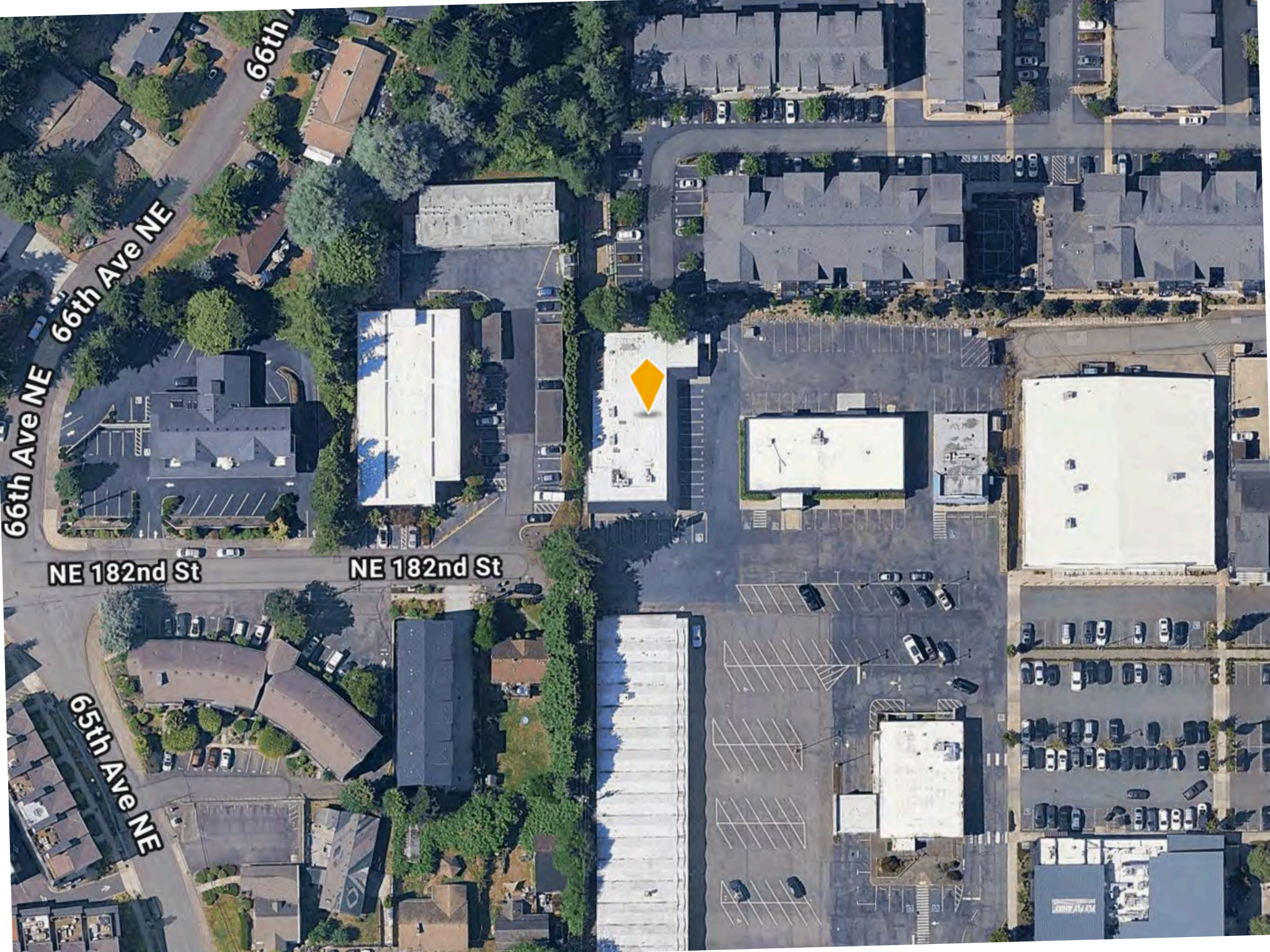
## Kenmore: Growth

Kenmore offers a central location with convenient access to Seattle, Bellevue, and Everett. With miles of shoreline and pedestrian- and bike-friendly infrastructure.

Looking ahead, Kenmore plans to enhance the lakefront and restore a key historic landmark—continuing its evolution into a vibrant and dynamic urban center.

## Transportation

- 2 Blocks away from the north shores of Lake Washington
- 1 block away from transit
- Easy Access to Highway 522 and Major Freeways



66th Ave NE  
66th Ave NE

NE 182nd St

NE 182nd St

65th Ave NE









## Demographics 2025 Consensus

1 Mile

3 Mile

5 Mile

Population

12,370

108,667

352,137

Median Age

40.7

41

39.6

Median Home Value

\$776,644

\$778,891

\$760,163

Average Income

\$148,357

\$147,634

\$136,989

Median Household Income

\$112,146

\$119,952

\$109,287

Daytime Employment

3,462

22,703

136,666

Number of Business

534

3,188

16,330

# Demographic Overview

**RED BARN ENGINEERING**

Salon Exodus  
YOUR FULL SERVICE SALON

LAKE WASHINGTON  
FOOT AND ANKLE CLINIC

(425) 892 8054 lakewashingtonfootankle.com

# For Lease

# KENMORE VILLAGE SQUARE

# SQUARE

6610 NE 181st St, Kenmore, WA 98028

**Exclusively Listed By:**

**Daniel Smith**  
206-550-1131  
danielsmith@mapleleafmgt.com

**John Rochford**  
425-444-2750  
johnrochford@mapleleafmgt.com

**ROB GASCA**  
425-766-3054  
robgasca@mapleleafmgt.com

DISCLAIMER: THE INFORMATION PROVIDED HAS BEEN SECURED FROM SOURCES BELIEVED TO BE RELIABLE, HOWEVER, NO WARRANTIES OR REPRESENTATIONS ARE MADE TO ITS ACCURACY. ALL MEASUREMENTS, SPECIFICATIONS, AND FINANCIAL DETAILS ARE APPROXIMATE AND SUBJECT TO VERIFICATION. PROSPECTIVE TENANTS OR BUYERS SHOULD CONSULT THEIR PROFESSIONAL ADVISORS AND CONDUCT THEIR OWN INDEPENDENT INVESTIGATION. PROPERTIES ARE SUBJECT TO CHANGE IN PRICE AND/OR AVAILABILITY WITHOUT NOTICE.