

The Village at North Station



GROUND FLOOR RETAIL FOR LEASE

1925 West North Temple
Salt Lake City, UT 84104

Chloe Cypers

801.644.6299

ccypers@legendcommercial.com

Tanner Olson

801.930.6752

tolson@legendcommercial.com

LEGEND
PARTNERS ■■■■





DEMOGRAPHICS

	1 MILE	3 MILE	5 MILE
2024 EST. POPULATION	18,754	105,314	208,681
2029 PROJECTED POPULATION	23,297	128,507	237,150
2024 EST. DAYTIME POPULATION	7,622	89,328	190,109
2024 EST. AVG HH INCOME	\$80,154	\$99,083	\$103,607
2024 EST. HOUSEHOLDS	7,146	45,070	91,932
2024 EST. BUSINESSES	338	5,406	12,178

HIGHLIGHTS

- 1,163 TO 7,795 SF RETAIL FOR LEASE
- GREASE TRAP AND HOOD ACCESS
- CALL FOR PRICING
- AVAILABLE IMMEDIATELY
- 1,678 NEW APARTMENT UNITS IN AREA
- 18 DEDICATED RETAIL PARKING STALLS

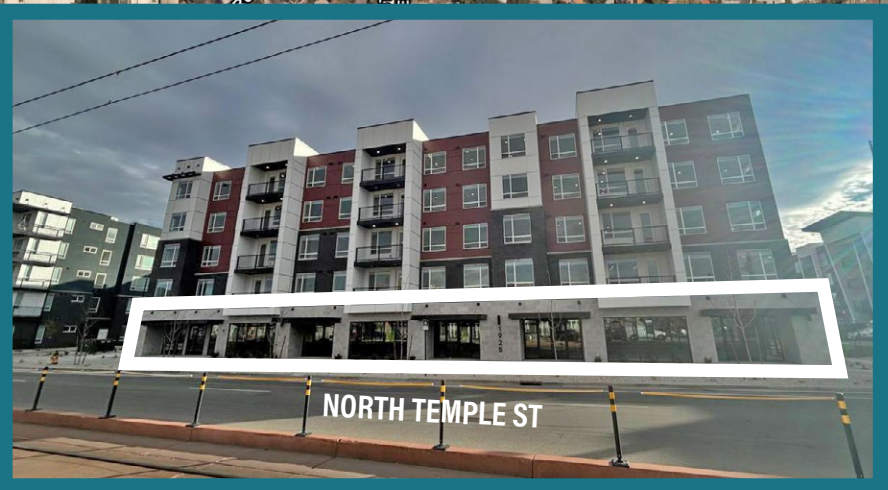
Chloe Cypers
801.644.6299
ccypers@legendcommercial.com

Tanner Olson
801.930.6752
tolson@legendcommercial.com



The Village at North Station
APARTMENTS
1925 WEST NORTH TEMPLE
SALT LAKE CITY, UT 84104

LEGEND
PARTNERS ■■■■
www.legendllp.com • 801.930.6750
2180 S 1300 E, Suite 240 | Salt Lake City, UT



SITE

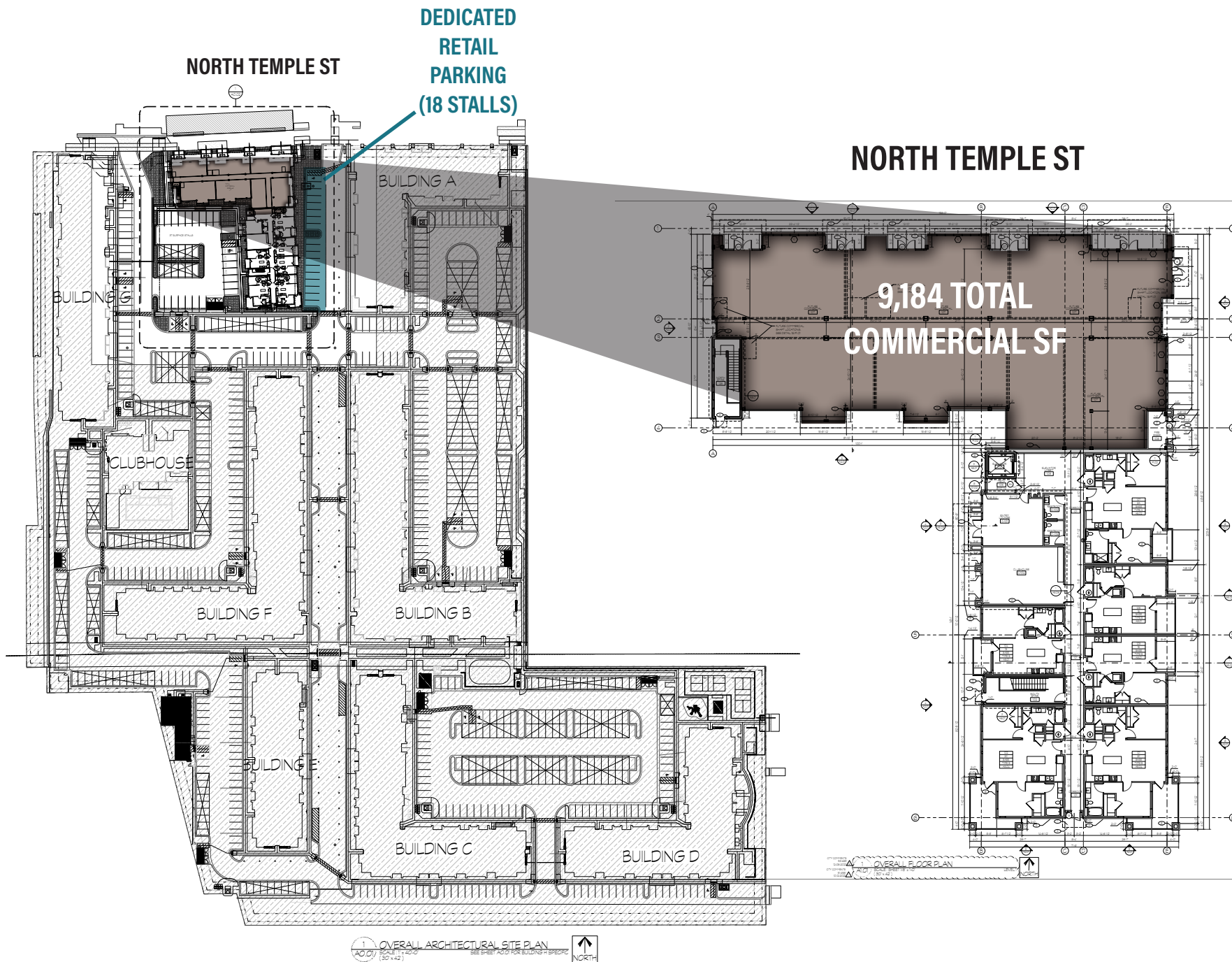
Chloe Cypers 801.644.6299
 ccyfers@legendcommercial.com

Tanner Olson 801.930.6752
 toolson@legendcommercial.com

The Village at North Station
 APARTMENTS
 1925 WEST NORTH TEMPLE
 SALT LAKE CITY, UT 84104

LEGEND
 PARTNERS

www.legendllp.com • 801.930.6750
 2180 S 1300 E, Suite 240 | Salt Lake City, UT



Chloe Cyper Tanner Olson
 801.644.6299 801.930.6752
 ccyper@legendcommercial.com tolon@legendcommercial.com

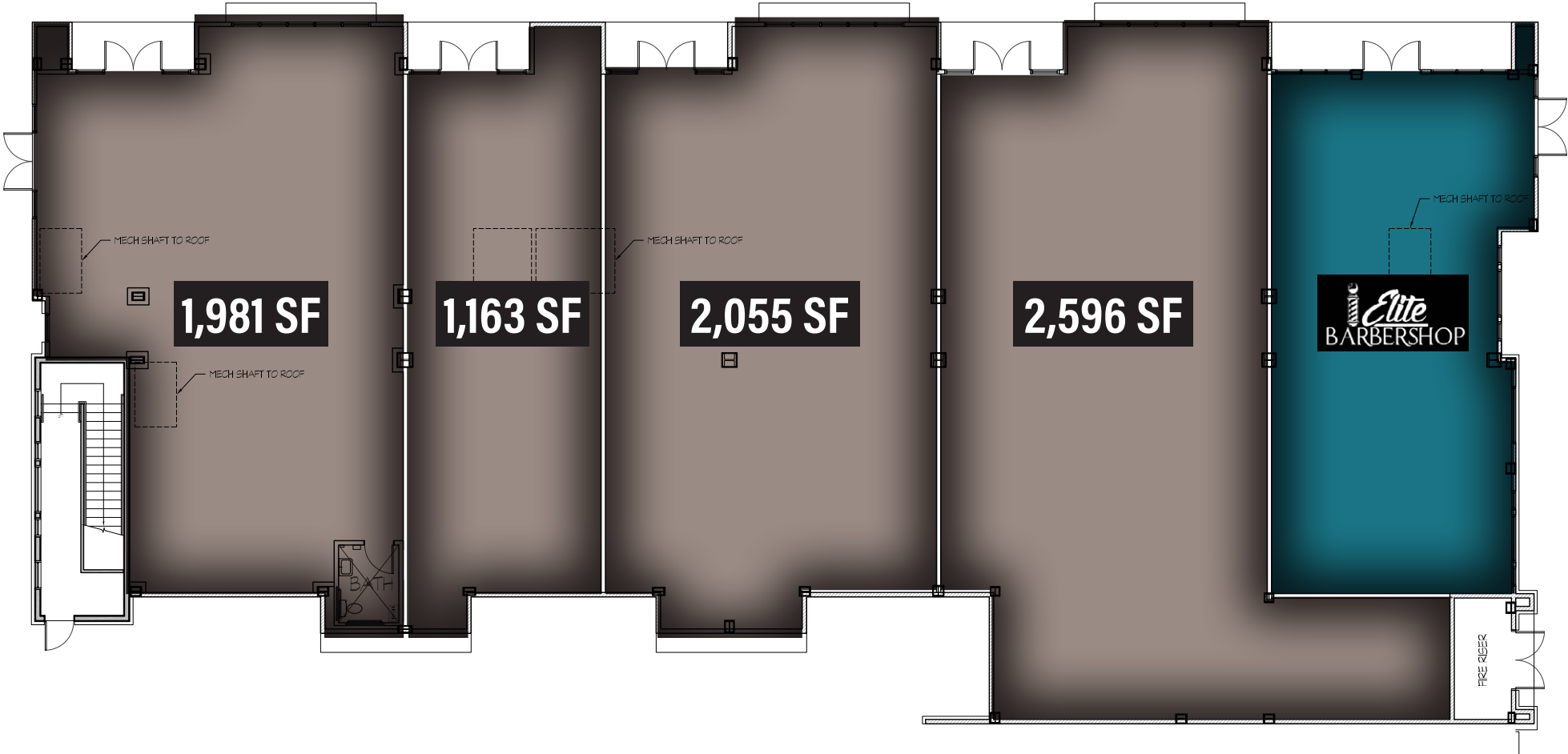


The Village at North Station
 APARTMENTS
 1925 WEST NORTH TEMPLE
 SALT LAKE CITY, UT 84104

LEGEND
 PARTNERS ■■■■

www.legendllp.com • 801.930.6750
 2180 S 1300 E, Suite 240 | Salt Lake City, UT

FLOOR PLAN



Chloe Cypers **Tanner Olson**
801.644.6299 801.930.6752
ccypers@legendcommercial.com tolson@legendcommercial.com



The Village at North Station
APARTMENTS
1925 WEST NORTH TEMPLE
SALT LAKE CITY, UT 84104

LEGEND
PARTNERS ■■■■
www.legendllp.com • 801.930.6750
2180 S 1300 E, Suite 240 | Salt Lake City, UT