



## 9200-9224 Dexter Ave

9200-9224 Dexter Ave, Detroit, MI 48206



**JMC MANAGEMENT** LLC  
A FULL SERVICE BROKERAGE AND MANAGEMENT FIRM

**Trena Edmondson**

JMC Management, LLC

24500 Northwestern Hwy, Suite 100, Southfield, MI 48075

[Trena.edmondson@jmcmanagement.com](mailto:Trena.edmondson@jmcmanagement.com)

(586) 427-9410 Ext: 113



# 9200-9224 Dexter Ave

\$16.38 - \$22.18 /SF/YR

Neighborhood retail center....



Rental Rate: \$16.38 - \$22.18 /SF/YR

Property Type: Retail

Property Subtype: Freestanding

Gross Leasable Area: 6,902 SF

Year Built: 1974

Walk Score ®: 56 (Somewhat Walkable)

Transit Score ®: 50 (Good Transit)

Rental Rate Mo: \$1.74 /SF/MO

### 1st Floor Ste 9212

1

Space Available	1,008 SF
Rental Rate	\$20.83 /SF/YR
Date Available	Now
Service Type	Modified Gross
Space Type	New
Space Use	Retail
Lease Term	Negotiable

### 1st Floor Ste 9216

2

Space Available	947 SF
Rental Rate	\$22.18 /SF/YR
Date Available	Now
Service Type	Modified Gross
Space Type	New
Space Use	Retail
Lease Term	Negotiable

### 1st Floor Ste 9224

3

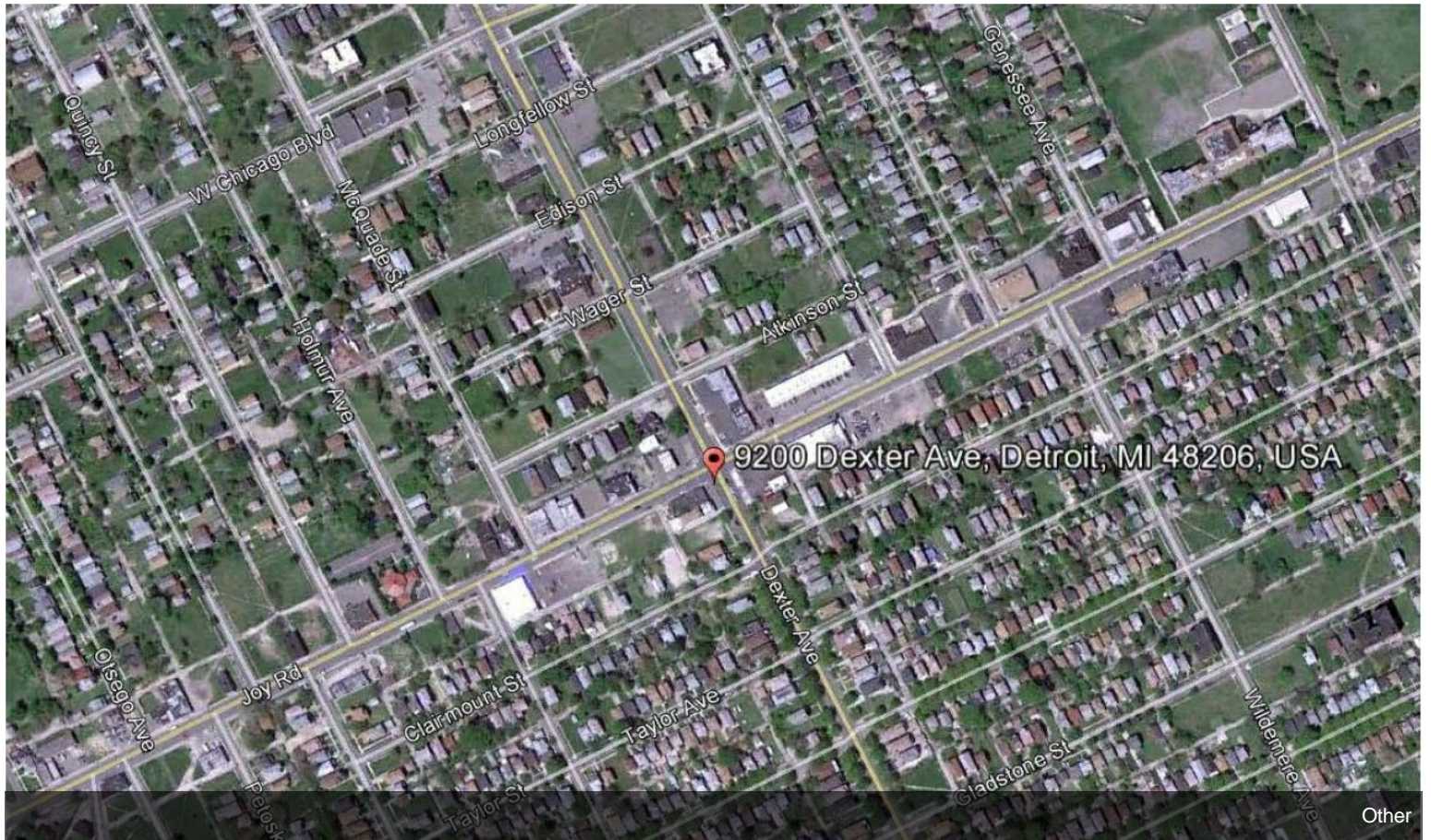
Space Available	2,015 SF
Rental Rate	\$16.38 /SF/YR
Date Available	Now
Service Type	Modified Gross
Space Type	New
Space Use	Retail
Lease Term	Negotiable



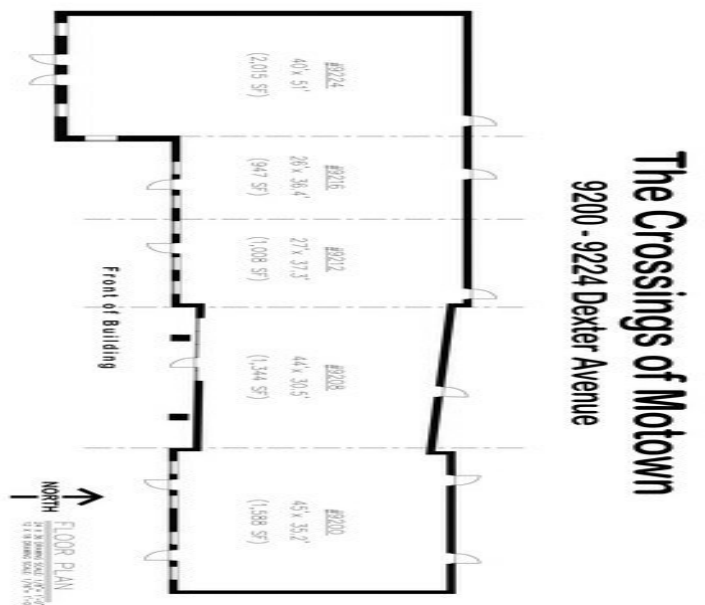
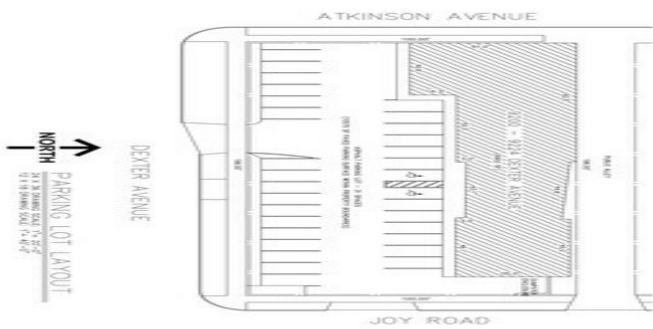
**9200-9224 Dexter Ave, Detroit, MI 48206**

Neighborhood retail center.

# Property Photos



Other



## The Crossings of Motown 9200 - 9224 Dexter Avenue



**JMC MANAGEMENT**  
PROPERTY MANAGEMENT AND MAINTENANCE

1. THIS PLAN AND SPECIFICATIONS ARE FOR INFORMATION ONLY AND DO NOT CONSTITUTE AN OFFER OF ANY REAL ESTATE. THE OFFEROR MAKES NO REPRESENTATION OR WARRANTY AS TO THE ACCURACY OF THE INFORMATION CONTAINED HEREIN. THE OFFEROR SHALL NOT BE RESPONSIBLE FOR ANY DAMAGES, INCLUDING REASONABLE ATTORNEY'S FEES, ARISING FROM THE USE OF THIS PLAN AND SPECIFICATIONS. THE OFFEROR SHALL NOT BE RESPONSIBLE FOR ANY DAMAGES, INCLUDING REASONABLE ATTORNEY'S FEES, ARISING FROM THE USE OF THIS PLAN AND SPECIFICATIONS.