



CONCORDIA MIDWAY

393 Dunlap Street North ♦ St. Paul, MN 55104



- ♦ Easy access to I-94 & 35E
- ♦ Close to downtown St. Paul & Minneapolis
- ♦ Metro Transit bus lines serve the building and two blocks away from Light Rail Transit Hub
- ♦ Underground parking and ample free surface parking available
- ♦ Free conference room
- ♦ Custom tenant finish packages available

FOR LEASE

BRITT M. PLEC

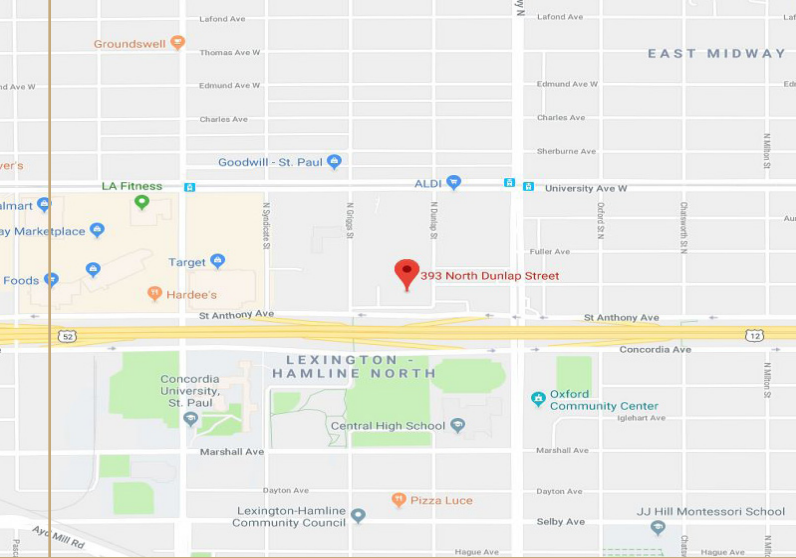
(651) 401-2714
britt.plec@frauenshuh.com



F R A U E N S H U H
COMMERCIAL REAL ESTATE

DAVID M. ANDERSON

(952) 767-2838
david.anderson@frauenshuh.com



CONCORDIA MIDWAY

393 Dunlap Street North ♦ St. Paul, MN 55104

♦ BUILDING DETAILS

- Building Size/Stories: 100,500 SF/9 Stories
- Year Built/Renovated: 1967/2016
- Zoning: Commerical, Office, Educational
- Parking Ratio: 4/1,000 SF
- Gross Rental Rate: \$25.50 PSF
- Available Space:

Suite 450D	338 RSF
Suite 450E	343 RSF
Suite 450F	463 RSF

♦ AMENITIES

- Convenient midway location
- Easy access to I-94 & 35E
- Close proximity to downtown St. Paul and Minneapolis
- Ample parking
- Free conference room
- Custom tenant finish packages available
- Newly renovated Peace Park

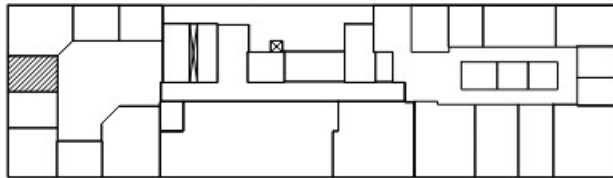
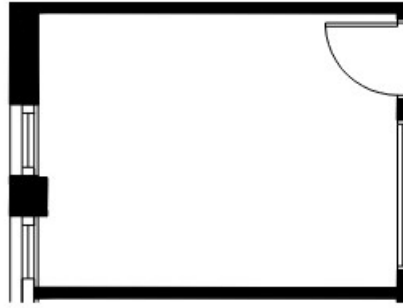
F R A U E N S H U H

COMMERCIAL REAL ESTATE

www.frauenshuh.com ♦ 7101 W. 78th Street ♦ Minneapolis, MN

CONCORIDA MIDWAY ♦ FOR LEASE ♦ SUITE 450D

393 Dunlap Street North ♦ St. Paul, MN



RIES TOWER

393 NORTH DUNLAP STREET

FOURTH FLOOR

ST. PAUL, MN 55104

338 RSF

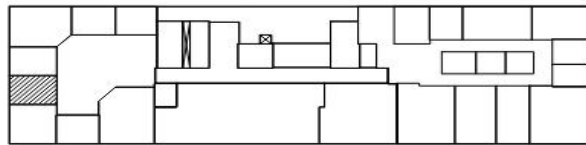
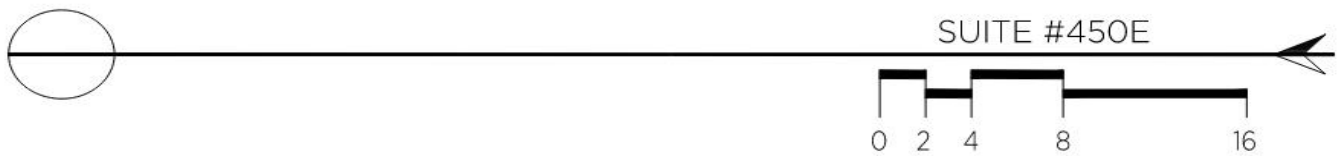
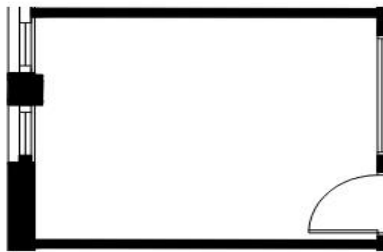
BRITT M. PLEC
(651) 401-2714
britt.plec@frauenshuh.com



DAVID M. ANDERSON
(952) 767-2838
david.anderson@frauenshuh.com

CONCORIDA MIDWAY ♦ FOR LEASE ♦ SUITE 450E

393 Dunlap Street North ♦ St. Paul, MN



RIES TOWER

393 NORTH DUNLAP STREET

FOURTH FLOOR

ST. PAUL, MN 55104

343 RSF

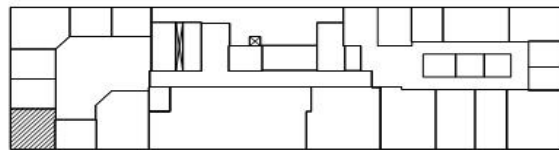
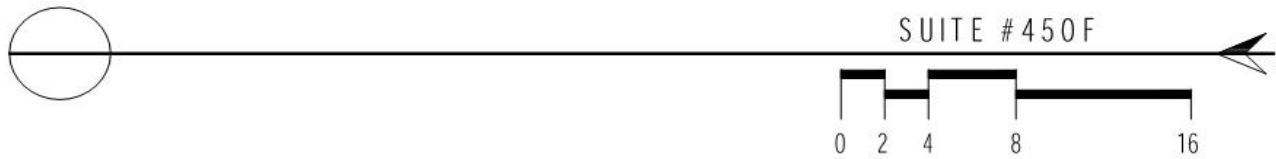
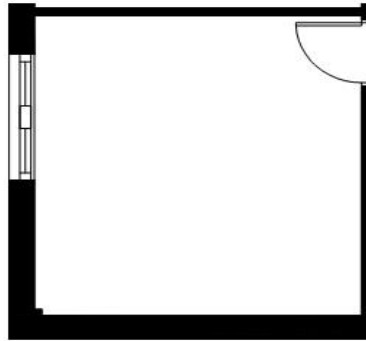
BRITT M. PLEC
(651) 401-2714
britt.plec@frauenshuh.com



DAVID M. ANDERSON
(952) 767-2838
david.anderson@frauenshuh.com

CONCORIDA MIDWAY ♦ FOR LEASE ♦ SUITE 450F

393 Dunlap Street North ♦ St. Paul, MN



393 NORTH DUNLAP STREET
ST. PAUL, MN 55104

FOURTH FLOOR

463 RSF

BRITT M. PLEC
(651) 401-2714
britt.plec@frauenshuh.com



DAVID M. ANDERSON
(952) 767-2838
david.anderson@frauenshuh.com