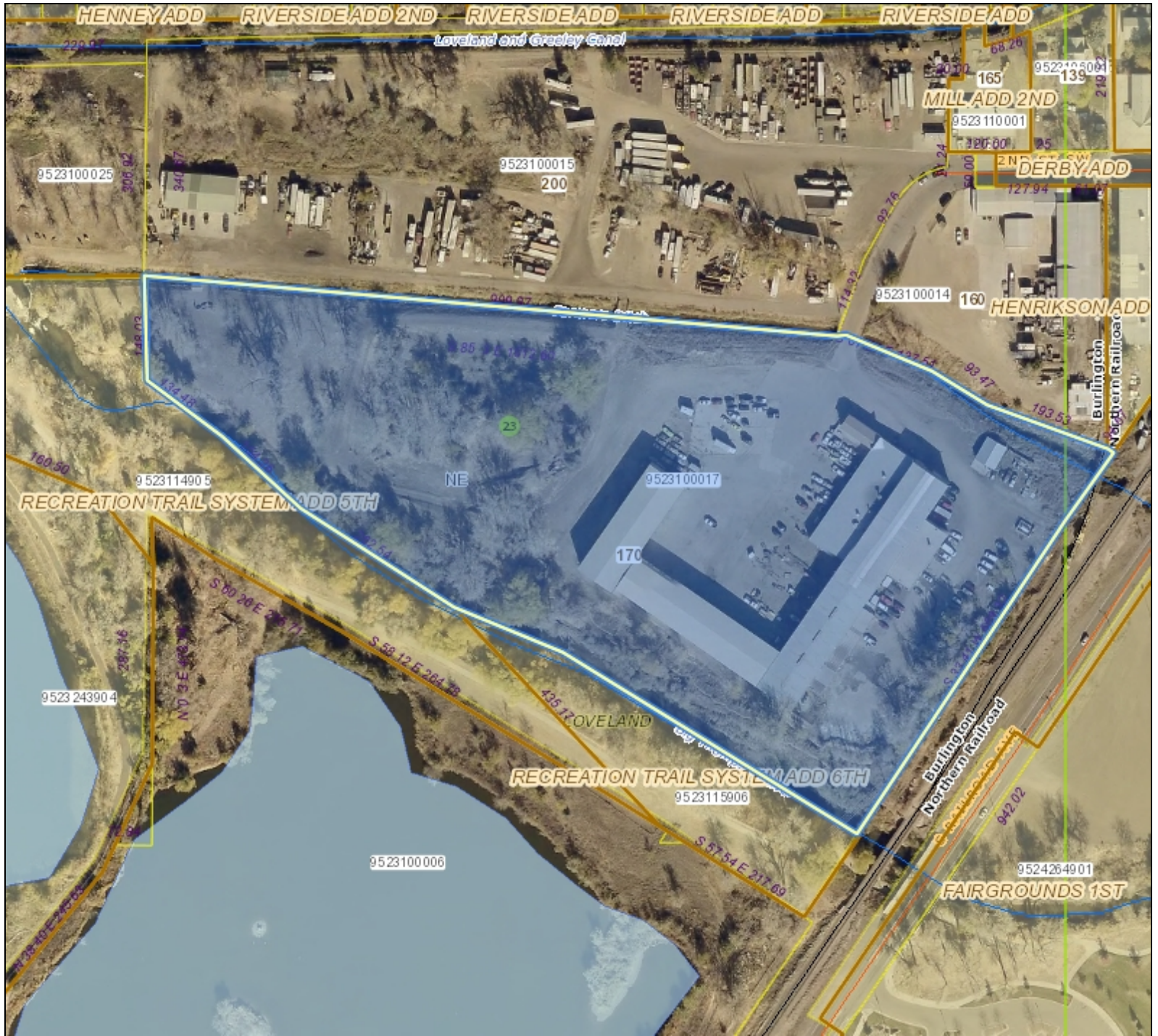


# Larimer County Web Map



## Legend

Addresses	Road System	State
Subdivisions	Lakes and Ponds	Federal
Tax Parcels	Major Rivers and Streams	Other
Recorded Dimensions	Rivers and Streams	
PLSS Township and Range	County Boundary	

## Notes

0.0 0 0.0 Miles

Scale  
1: 2,400



This map was created by Larimer County GIS using data from multiple sources for informal purposes only. This map may not reflect recent updates prior to the date of printing. Larimer County makes no warranty or guarantee concerning the completeness, accuracy, or reliability of the content represented.

Date Prepared: 1/28/2019 3:37:29 PM