

FOR LEASE

2222 Cottondale Lane, Little Rock, AR

For Lease: Riverdale Professional Office Space with River Views

Features

- Suite size: 2,930 SF
- Lease rate: \$22.00/SF, FSG
- Front door parking available
- Located in Riverdale neighborhood with views of the Arkansas River
- Easy access to local restaurants and retail shops of the area

Contact us

Justin Bentley, CCIM, SIOR
+1 501 850 0739
justin.bentley@ar.colliers.com

Todd Rice, CCIM
+1 501 850 0702
todd.rice@ar.colliers.com

Claire Huchingson
+1 501 372 6161
claire.huchingson@ar.colliers.com

1 Allied Drive, Suite 1500,
Little Rock, AR 72202
P: +1 501 372 6161
colliers.com/arkansas



Neighborhood Map



Area Demographics



Estimated Population (2025)

1 Mile	3 Mile	5 Mile
6,983	67,805	135,982



Estimated Households (2025)

1 Mile	3 Mile	5 Mile
3,914	32,025	61,865



Est. Avg Household Income (2025)

1 Mile	3 Mile	5 Mile
\$138,688	\$94,700	\$90,867

Property Photos



5 minutes
to downtown
Little Rock

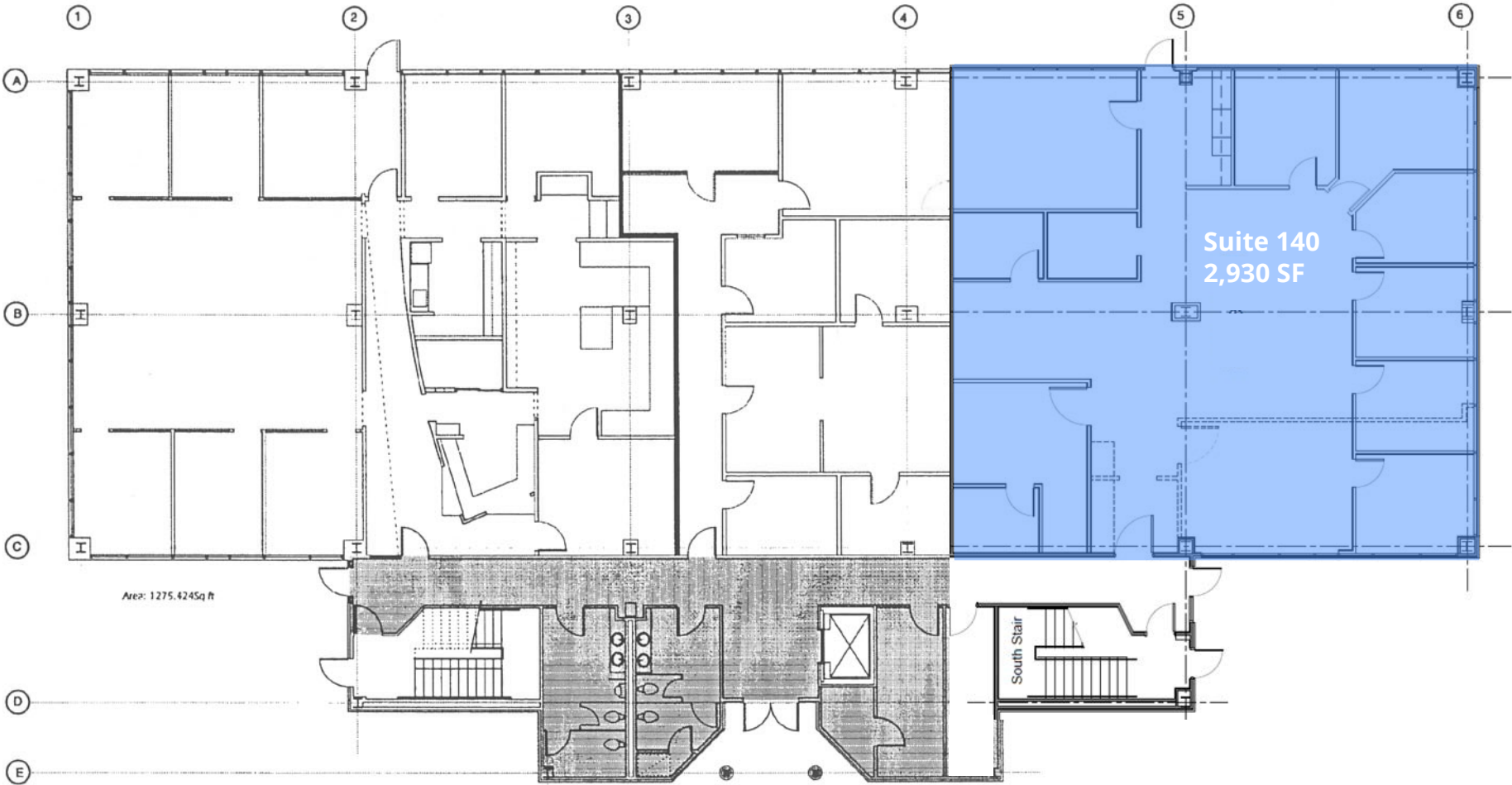


Riverfront views



Located
in **Riverdale**
Neighborhood

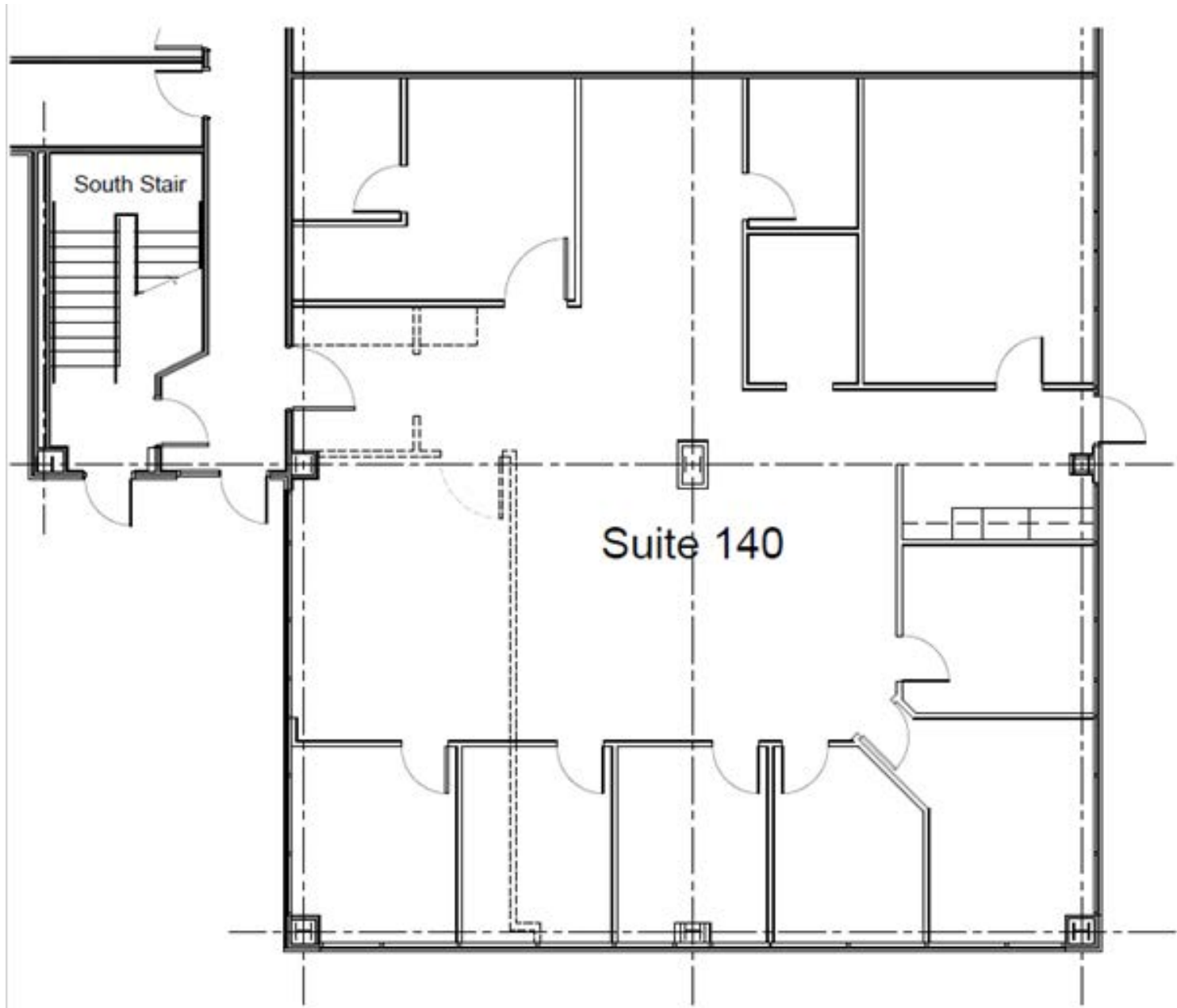
Floor Plan



WINROCK PLACE
FIRST FLOOR PLAN
1/16" = 1'-0" 1-11-00

 Common Area: 1261 Sq Ft

Suite Plan | 2,930 SF



Riverdale Office

2222 COTTONDALE LANE, LITTLE ROCK, AR



Contact us:

Justin Bentley, SIOR, CCIM
+1 501 850 0739
justin.bentley@ar.colliers.com

Todd Rice, CCIM
+1 501 850 0702
todd.rice@ar.colliers.com

Claire Huchingson
+1 501 372 6161
claire.huchingson@ar.colliers.com

This document has been prepared by Colliers International for advertising and general information only. Colliers International makes no guarantees, representations or warranties of any kind, expressed or implied, regarding the information including, but not limited to, warranties of content, accuracy and reliability. Any interested party should undertake their own inquiries as to the accuracy of the information. Colliers International excludes unequivocally all inferred or implied terms, conditions and warranties arising out of this document and excludes all liability for loss and damages arising there from. This publication is the copyrighted property of Colliers International and/or its licensor(s). ©2021. All rights reserved.

Colliers | Arkansas
1 Allied Drive | Suite 1500
Little Rock, AR 72202
P: +1 501 372 6161

Colliers