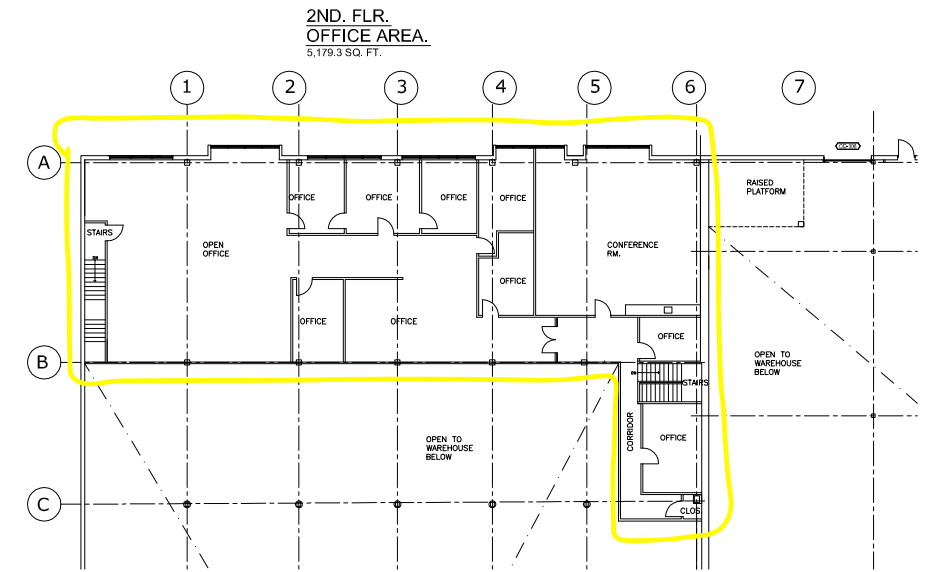


FIRST FLOOR PLAN
 IRON MOUNTAIN
 1201 N. 96TH. ST.
 SEATTLE, WA

(6) OVERHEAD DOORS
 WAREHOUSE A CEILING HEIGHT: 25'-10" TO BOTTOM OF ROOF DECK
 WAREHOUSE B CEILING HEIGHT: 39'-5" TO BOTTOM OF ROOF DECK



SECOND FLOOR PLAN
 IRON MOUNTAIN
 1201 N. 96TH. ST.
 SEATTLE, WA

IRON MOUNTAIN - 1201 N. 96TH. ST., SEATTLE WA - GROSS AREAS							
	WAREHOUSE A	OFFICE AREA	WAREHOUSE B	SPRINKLER RM.		INTERIOR GROSS AREA	EXTERIOR GROSS AREA
1ST FLOOR	21,593.5 SQ. FT.	5,664.1 SQ. FT.	23,324.2 SQ. FT.	211.6 SQ. FT.		50,793.4 SQ. FT.	51,601.2 SQ. FT.
2ND. FLOOR		5,179.3 SQ. FT.				5,179.3 SQ. FT.	5,276.0 SQ. FT.
BUILDING TOTALS						55,972.7 SQ. FT.	56,877.2 SQ. FT.